

Gas and Coal Reserve & Production

June 2022



ENERGY DATA CENTRE

Preface

Monthly Report on Gas and Coal Reserve & Production was prepared and published by Hydrocarbon Unit for the first time in July 2004. The present one is the issue for June 2022. In this report, Monthly Gas, Condensate, Water and Coal production of Bangladesh has been reflected. Monthly import of Liquefied Natural Gas (LNG) has been included in the report as well. Moreover, Daily Average Gas Production; Field wise Daily Average Production; Well wise Daily Average Production; Comparison of Field wise Average Gas Production between present & previous month; Daily Average Production by Operator; Comparison of National and IOC Daily Average Production along with the graphical presentation have been depicted. Monthly Coal production data is also included in this report.

This report has been prepared based on the data directly collected from the Production companies of Petrobangla (BAPEX, BGFCL & SGFL) and IOC companies (Tullow & Chevron). Liquefied Natural Gas (LNG) import data is collected from RPGCL & Coal production data is collected from BCMCL.

It is expected that the report will be helpful as reference book and elements of interest for the concerned.

The report will also be available at HCU's website: www.hcu.gov.bd.

Abul Khayer Md. Aminur Rahman
Director General (Additional Secretary)
Hydrocarbon Unit

Executive Summary of June 2022

Total gas and condensate Production in June 2022 were 70.09 Bcf and 205134 Bbl. During the previous month i.e. May 2022, gas and condensate production were 67.05 Bcf and 200077 Bbl and in the same month of the previous year i.e. June 2021, total gas and condensate production were 73.87 Bcf and 244611 Bbl respectively. The National Oil Companies (NOC's) and International Oil Companies (IOC's) Produced 25.64 Bcf and 44.44 Bcf gas respectively in June 2022. During the previous month i.e. May 2022, gas production by the National Oil Companies (NOC's) and International Oil Companies (IOC's) were 25.64 Bcf and 41.88 Bcf respectively. In the month of June 2022, Bibiyana gas field Produced 37.20 Bcf gas and it ranked top among the gas producers. Average production from the field during the month of June 2022 was 1240 MMcfd. It is noted that Bibiyana gas field Produced 34.57 Bcf in May 2022.

During the month of June 2022 total production of condensate was 205134 Bbl compared to 200077 Bbl in the previous month i.e. May 2022. Bibiyana gas field Produced 137231 Bbl condensate and ranked top while Jalalabad ranked 2nd by producing 26017 Bbl.

Total LNG import in June 2022 was 22.33 Bcf. As a result, Total LNG Import in this FY is 240.57 Bcf and cumulative LNG import stands on 775.43 Bcf from August 2018.

In the month of June 2022, total coal production was 5422 Ton. During the previous month, i.e. May 2022 total coal production was 761.69 Ton.

Gas Reserve & Production at a glance

Gas Initially in Place (GIIP)	:	40,092.19 Bcf
Recoverable (2P)	:	29,926.10 Bcf
Cumulative Production as of June 2022	:	19,506.24 Bcf
Remaining Reserve up to June 2022	:	10,420.26 Bcf
Gas Production in June 2022	:	70.09 Bcf
National Oil Company (NOC's) production in June 2022	:	25.64 Bcf
International Oil Company (IOC's) production in June 2022	:	44.44 Bcf
No. of National Oil Company (NOC's) in June 2022	:	3 (BGFCL, BAPEX, SGFL)
No. of International Oil Company (IOC's) in June 2022	:	2 (Chevron, Tullow)
Total gas fields of National Oil Company (NOC) in June 2022	:	21
Total gas fields of International Oil Company (IOC) in June 2022	:	5
Total gas wells of National Oil Company (NOC) in June 2022	:	115
Total gas wells of International Oil Company (IOC) in June 2022	:	60
No. of National Oil Company (NOC's) gas production well in June 2022	:	70
No. of Intl. Oil Company (IOC's) gas production well in June 2022	:	42
No. of National Oil company (NOC's) suspended well in June 2022	:	45
No. of International Oil company (IOC's) suspended well in June 2022	:	18
Total LNG Import in June 2022	:	22.33 Bcf
Total LNG Import from July 2021 to June 2022	:	240.57 Bcf
Cumulative LNG Import from August 2018	:	775.43 Bcf

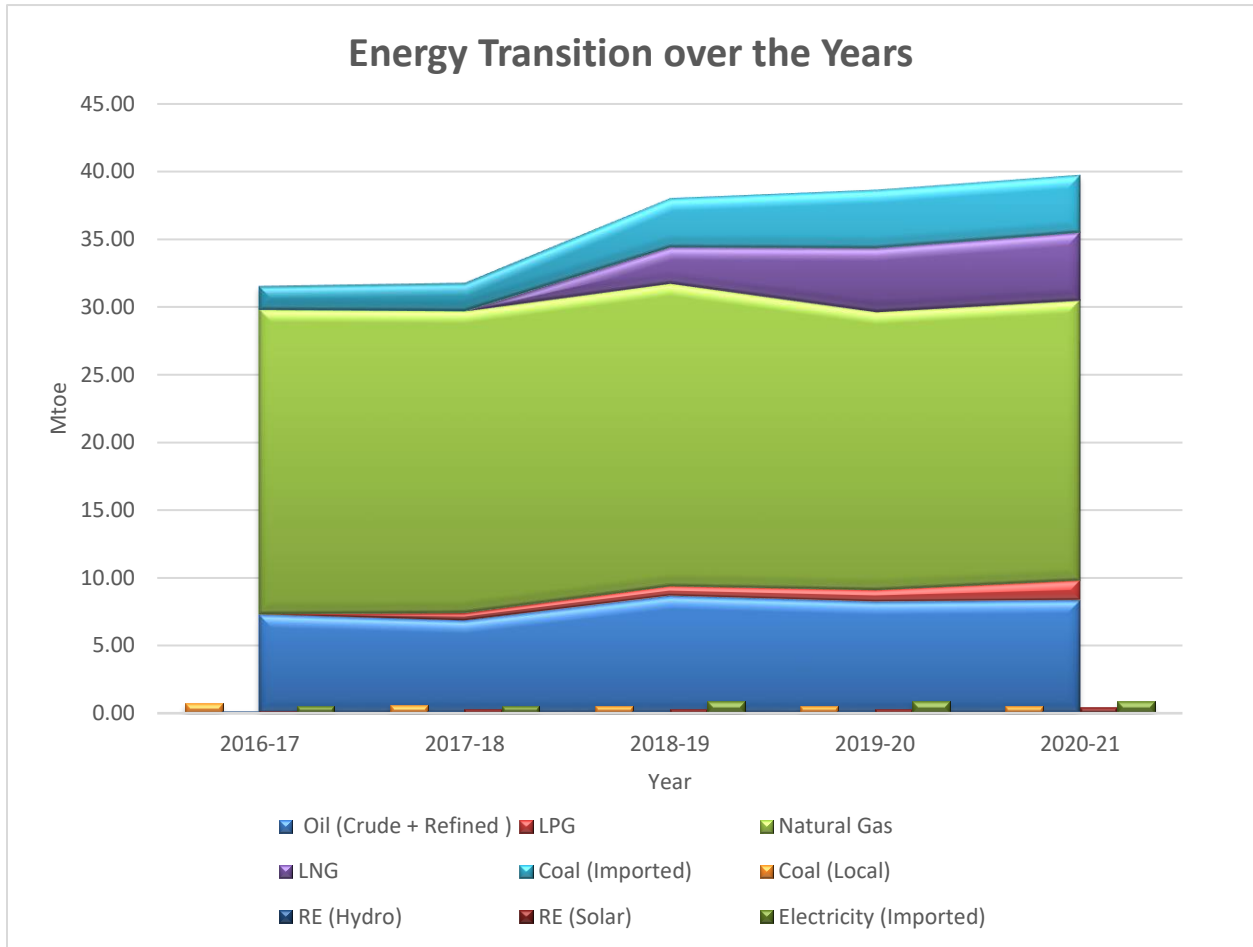


Table of Contents

Gas Report	Page No.
Summary	1
summary of Reserve and Production	2
Production comparison between May 2022 & June 2022	3
Production per well & production, reserve ratio	4
Monthly Production by Fields & Wells up to June 2022	5-12
Monthly Condensate Production by Fields up to June 2022	13-14
Monthly Water Production by Fields from June 2022	15-16
Conditions of Field and Well up to June 2022	17-21
Chart	
Well-wise Production of All fields in 2020-21	22
Reserve, Production and Remaining Reserve as of June 2022	23
Daily Average Gas Production from January 2016 to June 2022	24
Field wise Daily Average Production as of June 2022	25
Well wise Daily Average Production-BGFCL as of June 2022	26
Well wise Daily Average Production-BAPEX and SGFL, June 2022	27
Well wise Daily Average Production-IOC and JVA, June 2022	28
Field wise Avg Gas Production between May 2022 & June 2022	29
Daily Average Production by Operator, June 2022	30
Operator wise daily Avg Production between May 2022 & June 2022	31
Daily Average Production – National vs IOC's, June 2022	32
Daily Avg Gas Production- National vs IOC's between May 2022 & June 2022	33
Daily Average Production IOC's and JVA, June 2022	34
Monthly Condensate Production, June 2022	35
Coal Report	
Summary	36-37
Barapukuria Coal Mine-MPM and P Contract (BCMCL)	38
Barapukuria Coal Mine Day wise Data Graph for June 2022	39
Conclusion	40

Summary of Reserve, Production & Import As of June 2022

Gas Initially Place (Proven + Probable)	40,092.19 Bcf	40.09 Tcf
Recoverable (Proven + Probable)	29,926.50 Bcf	29.93 Tcf
Gas Production in June 2022	70.09 Bcf	0.07 Tcf
Cumulative Gas Production as of June 2022	19,506.24 Bcf	19.51 Tcf
Remaining Reserve	10,420.26 Bcf	10.42 Tcf

NOTE: Reserve figure based on "Updated Report on Bangladesh Gas Reserve Estimation 2010", prepared by Gustavson Associates LLC, USA

Total LNG Import in June 2022	22.33 Bcf	0.02 Tcf
Total LNG Import from July 2021 to June 2022	240.57 Bcf	0.24 Tcf
Cumulative LNG Import from August 2018	775.43 Bcf	0.78 Tcf

Summary of Reserve and Production

(As of June 2022)

Gas Bcf



SI No.	Field	2P	GIIP	2P Reserve	Gas Prod. In June'22	Cum. Gas Production	Remaining Reserve	Cum. Condensate Production
1	Begumganj		47.0	33.0	0.25	9.8	23.2	3
2	Shahbazpur		415.0	261.0	1.86	85.6	175.4	14
3	Semutang		654.0	318.0	0.02	14.1	303.9	5
4	Fenchuganj		483.0	329.0	0.44	168.4	160.6	120
5	Salda Nadi		393.0	275.0	0.13	96.4	178.6	59
6	Srikail*		230.0	161.0	1.21	125.5	35.5	277
7	Sundalpur *		62.2	50.2	0.23	21.3	28.9	1
8	Rupganj		48.0	33.6	0.00	0.7	32.9	1
Bapex			2,332.2	1,460.8	4.14	521.7	939.1	480
9	Meghna		122.0	101.0	0.16	79.3	21.7	143
10	Narshingdi		405.0	345.0	0.80	233.7	111.3	468
11	Kamta		72.0	50.0	0.00	21.1	28.9	4
12	Habiganj		3,981.0	2,787.0	4.54	2,655.8	131.2	147
13	Bakhrabad		1,825.0	1,387.0	1.06	859.4	527.6	1,068
14	Titas		9,039.0	7,582.0	12.06	5,182.1	2,399.9	5,651
BGFCL			15,444.0	12,252.0	18.63	9,031.5	3,220.5	7,481
15	Sangu		976.0	771.0	0.00	489.5	281.5	37
Santos/Cairn			976.0	771.0	0.00	489.5	281.5	37
16	Bibiyana**		8,383.0	5,755.4	37.20	5,182.2	573.2	29,893
17	Moulavi Bazar**		494.0	428.0	0.51	341.3	86.7	120
18	Jalalabad**		2,716.0	1,429.3	5.18	1,526.3	0.0	11,343
Chevron			11,593.0	7,612.7	42.89	7,049.8	562.9	41,356
19	Feni		185.0	130.0	0.00	63.0	67.0	110
Niko			185.0	130.0	0.00	63.0	67.0	110
20	Kailas Tila		3,463.0	2,880.0	1.17	784.5	2,095.5	8,342
21	Sylhet		580.0	408.0	0.18	220.0	188.0	832
22	Rashidpur		3,887.0	3,134.0	1.31	686.5	2,447.5	829
23	Chattak		677.0	474.0	0.00	25.8	448.2	4
24	Beani Bazar		225.0	137.0	0.21	105.4	31.6	1,724
SGFL			8,832.0	7,033.0	2.88	1,822.1	5,210.9	11,731
25	Bangura		730.0	621.0	1.55	528.7	92.3	1,365
Tullow			730.0	621.0	1.55	528.7	92.3	1,365
26	Kutubdia		65.0	46.0	0.00	0.0	46.0	0
Total			40,092.2	29,926.5	70.09	19,506.2	10,420.3	62,560

* Preliminary reserve estimated by BAPEX

** 2P reserve estimation by Petrobangla

Production comparison between May'22 & June'22



SI No.	Field	Gas Prod. (MMcf) in May'22	Daily Avg. (MMcfd) in May'22	Gas Prod. (MMcf) in June'22	Daily Avg. (MMcfd) in June'22
1	Begumganj	250	8	245	8
2	Shahbazpur	1847	60	1855	62
3	Semutang	24	1	22	1
4	Fenchuganj	462	15	443	15
5	Salda Nadi	133	4	131	4
6	Srikail	1264	41	1208	40
7	Sundalpur	239	8	234	8
8	Rupganj	0	0	0	0
Bapex		4218	136	4139	138
9	Meghna	221	7	157	5
10	Narshingdi	839	27	800	27
11	Kamta	0	0	0	0
12	Habiganj	4422	143	4544	151
13	Bakhrabad	1099	35	1064	35
14	Titas	11340	366	12061	402
BGFCL		17921	578	18627	621
15	Sangu	0	0	0	0
Santos/Cairn		0	0	0	0
16	Bibiyana	34574	1115	37201	1240
17	Moulavi Bazar	400	13	510	17
18	Jalalabad	5500	177	5182	173
Chevron		40474	1306	42892	1430
19	Feni	0	0	0	0
Niko		0	0	0	0
20	Kailas Tila	1272	41	1173	39
21	Sylhet	184	6	177	6
22	Rashidpur	1355	44	1314	44
23	Chattak	0	0	0	0
24	Beani Bazar	220	7	214	7
SGFL		3031	98	2878	96
25	Bangura	1401	45	1550	52
Tullow		1401	45	1550	52
26	Kutubdia	0	0	0	0
Total		67045	2163	70086	2336

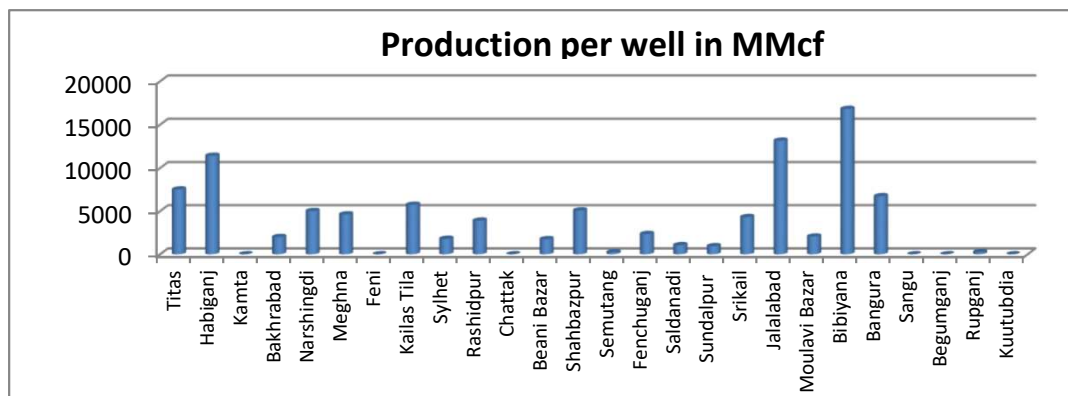
Production per well & production reserve ratio



HYDROCARBON UNIT

Energy & Mineral Resources Division

	No of production well	Total 2p- Recoverable	2020-21 production	production per well mmcf	production reserve ratio
Titas	26	7582	153.5	5903.85	0.020
Habiganj	8	2787	67.89	8486.25	0.024
Kamta	0	50	0	0.00	0.000
Bakhrabad	7	1387	15.02	2145.71	0.011
Narshingdi	2	345	9.09	4545.00	0.026
Meghna	1	101	3.1	3100.00	0.031
Feni	0	130	0	0.00	0.000
Kailas Tila	4	2880	20.19	5047.50	0.007
Sylhet	1	408	1.36	1360.00	0.003
Rashidpur	5	3134	17.53	3506.00	0.006
Chattak	0	474	0	0.00	0.000
Beani Bazar	1	137	3.06	3060.00	0.022
Shahbazpur	4	261	16.8	4200.00	0.064
Semutang	2	318	0.32	160.00	0.001
Fenchuganj	2	329	1.42	710.00	0.004
Saldanadi	2	275	2.17	1085.00	0.008
Sundalpur	1	50.2	2.6	2600.00	0.052
Srikail	3	161	11.19	3730.00	0.070
Jalalabad	7	1429.3	73.11	10444.29	0.051
Moulavi Bazar	4	428	5.33	1332.50	0.012
Bibiyana	26	5755.4	447.87	17225.77	0.078
Bangura	5	621	33.45	6690.00	0.054
Sangu	0	771	0	0.00	0.000
Begumganj	1	33	1.94	0.00	0.059
Rupganj	0	33.6	0	0.00	0.000
Kuutubdia	0	46	0	0.00	0.000
Total	112	29926.5	886.94	7919.11	0.030



Monthly Production by Field and Well upto June 2022



HYDROCARBON UNIT
Energy & Mineral Resources Division

Figures in mmscf

Well	Jan	Feb	Mar	Apr	May	Jun	Jul	Aug	Sep	Oct	Nov	Dec	Total	Cumulative	2021	2020	2019
Field : Bakharabad																	
BKB-1	417	376	417	400	415	403							2,428	156,048	4,265	4,892	3,295
BKB-2	0	0	0	0	0	0							0	87,012	0	63	378
BKB-3	142	130	142	137	142	138							831	167,072	1,774	1,864	1,757
BKB-4	0	0	0	0	0	0							0	55,872	0	0	0
BKB-5	137	123	136	136	142	136							811	64,524	1,443	1,703	1,757
BKB-6	0	0	0	0	0	0							0	50,069	0	0	0
BKB-7	0	0	0	0	0	0							0	107,750	0	0	0
BKB-8	228	206	227	222	229	223							1,335	135,948	2,818	2,969	2,565
BKB-9	111	100	110	107	110	108							647	28,180	1,655	2,171	2,585
BKB-10	65	58	64	61	61	55							363	6,955	811	1,015	1,092
Field Total:	1,100	992	1,097	1,064	1,099	1,064	0	0	0	0	0	0	6,416	859,431	12,767	14,678	13,429
Daily Avg.(mmscfd)	35	35	35	35	35	35	0	0	0	0	0	0	35		35	40	37
Field : Bangura																	
Bangura-1	307	266	287	276	262	263							1,661	102,445	3,752	3,640	4,138
Bangura-2	351	305	329	319	304	304							1,912	95,498	4,395	4,340	5,312
Bangura-3	442	392	425	413	405	415							2,490	115,358	4,988	4,958	6,195
Bangura-6	211	191	206	193	195	199							1,196	19,774	2,413	3,700	3,518
Bangura-5	0	165	277	233	235	369							1,279	195,632	11,513	15,921	16,177
Field Total:	1,311	1,319	1,524	1,434	1,401	1,550	0	0	0	0	0	0	8,539	528,707	27,062	32,559	35,340
Daily Avg.(mmscfd)	42	47	49	48	45	52	0	0	0	0	0	0	47		74	89	97
Field : Beani Bazar																	
BB-1	0	0	0	0	0	0	0	0	0	0	0	0	0	35,481	0	0	0
BB-2	227	203	224	215	220	214							1,303	69,923	2,809	2,940	3,135
Field Total:	227	203	224	215	220	214	0	0	0	0	0	0	1,303	105,403	2,809	2,940	3,135
Daily Avg.(mmscfd)	7	7	7	7	7	7	0	0	0	0	0	0	7		8	8	9
Field : Bibiyana																	
BY-1	1,709	1,505	1,607	1,543	1,466	1,436							9,267	454,641	21,751	26,283	29,455
BY-2	781	686	694	654	553	544							3,913	318,471	9,922	12,748	17,462
BY-3	1,432	1,267	1,338	1,296	1,223	1,212							7,768	278,467	16,543	14,326	4,562
BY-4	1,444	1,273	1,354	1,299	1,210	1,183							7,763	253,975	18,221	22,661	24,793
BY-5	881	775	826	795	786	772							4,836	198,176	9,764	5,441	6,168
BY-6	1,361	1,192	1,265	1,208	1,165	1,129							7,320	260,226	14,852	7,419	9,140
BY-7	1,435	1,290	1,383	1,322	1,261	1,238							7,929	318,854	17,887	21,873	26,581
BY-8	1,647	1,461	1,558	1,486	1,341	1,336							8,830	181,110	19,722	9,776	8,538
BY-9	1,667	1,483	1,593	1,512	1,517	1,548							9,318	166,053	19,492	7,462	5,164

Monthly Production by Field and Well upto June 2022



HYDROCARBON UNIT

Energy & Mineral Resources Division

Figures in mmscf

Well	Jan	Feb	Mar	Apr	May	Jun	Jul	Aug	Sep	Oct	Nov	Dec	Total	Cumulative	2021	2020	2019	
BY-10	1,546	1,359	1,454	1383	1,365	1,383							8,492	401,998	18,834	16,678	22,997	
BY-11	1,868	1,663	1,765	1673	1,572	1,606							10,146	180,934	22,649	19,194	8,983	
BY-12	1,688	1,501	1,598	1508	1,399	1,437							9,132	193,820	19,912	17,675	24,399	
BY-13	1,828	1,620	1,595	614	1,826	2,471							9,955	138,684	23,092	21,893	10,785	
BY-14	1,587	1,401	1,495	1433	1,390	1,531							8,836	129,274	11,632	9,202	8,991	
BY-15	1,127	985	1,048	978	382	135							4,654	158,594	14,666	20,428	21,925	
BY-16	1,728	1,521	1,645	1292	838	1,969							8,993	114,988	22,128	12,548	10,246	
BY-17	1,112	985	1,061	1011	1,014	977							6,160	132,427	12,683	17,109	18,604	
BY-18	1,817	1,595	1,685	1608	1,451	1,517							9,672	205,791	22,024	26,284	30,009	
BY-19	1,617	1,308	870	1735	1,645	1,788							8,963	112,589	20,455	23,886	27,207	
BY-20	1,335	0	1,533	371	1,226	1,151							5,616	107,187	19,054	21,972	22,699	
BY-21	487	2,197	2,469	1851	1,968	2,103							11,076	96,842	21,327	20,638	8,577	
BY-22	1,250	1,116	1,173	1122	1,017	1,061							6,738	165,999	15,195	16,774	19,492	
BY-23	1,775	1,545	714	1719	1,720	1,933							9,405	129,549	20,712	22,066	25,318	
BY-24	821	868	965	923	936	900							5,412	90,715	6,566	10,304	10,269	
BY-25	1,705	2,277	2,252	2171	2,111	2,360							12,877	187,381	19,902	22,625	26,797	
BY-26	749	422	2,874	2157	2,193	2,480							10,874	205,462	22,847	26,748	29,429	
Field Total:	36399	33297	37813	34662	34574	37201	0	0	0	0	0	0	213,946	5,182,206	461,830	454,012	458,589	
Daily Avg.(mmscfd)	1174	1,189	1220	1155	1115	1240	0	0	0	0	0	0	1,182		1,265	1,240	1,256	
Field :	Chattak																	
Ch-1	Production Suspended													25,834				
Field Total:			0	0	0	0	0	0	0	0	0	0		25,834				
Daily Avg.(mmscfd)				0	0			0	0			0		0		0	0	0
Field :	Fenchuganj																	
Fenchuganj-2													0	38,169	0	0	0	
Fenchuganj-3	290	231	271	208	192	191							1,381	96,473	1,029	1,547	1,877	
Fenchuganj-4	304	273	293	271	270	252							1,664	33,732	2,486	3	305	
Field Total:	594	504	564	479	462	443	0	0	0	0	0	0	3,045	168,373	3,515	1,550	2,182	
Daily Avg.(mmscfd)	19	18	18	16	15	15	0	0	0	0	0	0	17		10	4	6	
Field :	Feni																	
Feni-1	Production Suspended								0	0	0			34,214				
Feni-2	Production Suspended								0	0	0			6,119				
Feni-3	Production Suspended								0	0	0			2,176				

Monthly Production by Field and Well upto June 2022



HYDROCARBON UNIT

Energy & Mineral Resources Division

Figures in mmscf

Well	Jan	Feb	Mar	Apr	May	Jun	Jul	Aug	Sep	Oct	Nov	Dec	Total	Cumulative	2021	2020	2019				
Feni-4	Production Suspended								0	0									14,386		
Feni-5	Production Suspended								0	0									6,127		
Field Total:													63,023								
Daily Avg.(mmscfd)																					
Field :	Habiganj																				
Hbj-1	55	37	0	0	0	0							92	287,251	1,276	3,651	4,124				
Hbj-2	0	0	0	0	0	0							0	275,704	0	0	0				
Hbj-3	715	647	725	693	670	686							4,138	410,978	8,784	9,952	10,947				
Hbj-4	715	647	725	693	670	686							4,138	405,436	8,784	9,952	10,947				
Hbj-5	714	647	725	698	688	683							4,155	327,807	8,381	8,620	8,977				
Hbj-6	471	426	474	458	443	440							2,711	181,035	5,461	5,305	5,349				
Hbj-7	1,205	1,093	1,224	1,186	1,137	1,176							7,021	302,215	14,133	13,671	14,272				
Hbj-8	0	0	0	0	0	0							0	11,023	0	0	0				
Hbj-9	0	0	0	0	0	0							0	52,652	0	0	0				
Hbj-10	617	559	620.2	601	569.5	602							3,568	285,745	8,660	9,961	10,423				
Hbj-11	342	310	340.9	271	244	270							1,778	115,990	4,890	6,094	6,920				
Field Total:	4,834	4,367	4,834	4,600	4,422	4,544	0	0	0	0	0	0	27,601	2,655,835	60,368	67,206	71,959				
Daily Avg.(mmscfd)	156	156	156	153	143	151	0	0	0	0	0	0	152		165	184	197				
Field :	Jalalabad																				
JB-1	830	732	767	784	754	759							4,626	276,860	8,050	9,224	9,191				
JB-2	1,026	912	938	974	933	951							5,734	318,509	10,135	11,644	11,400				
JB-3	1,351	1,204	1,262	1,270	1,238	1,121							7,447	391,787	13,420	15,132	15,263				
JB-4	772	687	692	726	346	36							3,259	301,556	7,176	7,355	4,766				
JB-6	1,360	1,198	1,262	1,283	1,248	1,303							7,654	110,511	13,697	14,814	15,021				
JB-7	0	0	0	0	0	0							0	43,510	6	2,718	11,396				
JB-8	1,066	940	992	1,014	981	1,013							6,005	83,541	10,735	11,643	11,228				
Field Total:	6,405	5,673	5,914	6,051	5,500	5,182	0	0	0	0	0	0	34,725	1,526,274	63,219	72,531	78,265				
Daily Avg.(mmscfd)	207	203	191	202	177	173	0	0	0	0	0	0	192		173	198	214				
Field :	Kailas Tila																				
KTL-1	0	0	0	0	0	0							0	205,181	0	0	371				

Monthly Production by Field and Well upto June 2022



HYDROCARBON UNIT
Energy & Mineral Resources Division

Figures in mmscf

Well	Jan	Feb	Mar	Apr	May	Jun	Jul	Aug	Sep	Oct	Nov	Dec	Total	Cumulative	2021	2020	2019
KTL-2	0	0	0	0	0	0							0	192,972	1,368	6,291	7,166
KTL-3	0	0	0	0	0	0							0	140,672	0	269	2,583
KTL-4	128	116	128	123	128	122							745	103,378	1,761	2,139	2,639
KTL-5	0	0	0	0	0	0							0	17,923	0	0	0
KTL-6	769	695	773	751	761	746							4,495	122,835	8,960	9,249	9,042
KTL-7	0	0	0	0	383	305							688	1,504	0	0	0
Field Total:	897	810	901	874	1,272	1,173	0	0	0	0	0	0	5,927	784,465	12,089	17,949	21,801
Daily Avg.(mmscfd)	29	29	29	29	41	39	0	0	0	0	0	0	33		33	49	60
Field : Kamta																	
Kamta-1	Production Suspended													21,139			
Field Total:	0													21,139			
Daily Avg.(mmscfd)																	
Field : Meghna																	
M-1	236	205	236	233	221	157							1,287	79,265	2,602	2,945	3,458
Field Total:	236	205	236	233	221	157	0	0	0	0	0	0	1,287	79,265	2,602	2,945	3,458
Daily Avg.(mmscfd)	8	7	8	8	7	5	0	0	0	0	0	0	7		7	8	9
Field : Moulavi Bazar																	
MV Bazar-2	50	72	57	65	51	66							361	56,715	330	1,217	770
MV Bazar-3	317	250	234	216	191	251							1,459	167,597	2,460	3,848	2,022
MV Bazar-4	46	17	22	14	16	26							142	60,146	624	266	1,047
MV Bazar-5	0	0	0	0	0	0								66			
MV Bazar-6	134	146	169	202	141	166							958	20,774	1,053	529	1,886
MV Bazar-7	0	0	0	0	0	0							0	5,648	0	0	4
MV Bazar-9	0	0	0	0	0	0							0	30,337	0	0	1
Field Total:	547	485	482	497	400	510	0	0	0	0	0	0	2,920	341,283	4,466	5,859	5,730
Daily Avg.(mmscfd)	18	17	16	17	13	17	0	0	0	0	0	0	16		12	16	16
Field : Narshingdi																	
N-1	503	455	501	483	500	477							2,919	164,949	5,812	5,960	5,663
N-2	340	307	341	331	339	323							1,981	68,746	4,001	3,661	3,732
Field Total:	843	762	842	814	839	800	0	0	0	0	0	0	4,901	233,695	9,814	9,621	9,395

Monthly Production by Field and Well upto June 2022



HYDROCARBON UNIT
Energy & Mineral Resources Division

Figures in mmscf

Well	Jan	Feb	Mar	Apr	May	Jun	Jul	Aug	Sep	Oct	Nov	Dec	Total	Cumulative	2021	2020	2019
Daily Avg.(mmscfd)	27	27	27	27	27	27	0	0	0	0	0	0	27		27	26	26
Field : Rashidpur																	
RP-1	560	509	559	544	563	545							3,280	189,652	6,557	6,447	6,305
RP-2	0	0	0	0	0	0							0	82,474	0	0	0
RP-3	217	196	217	210	217	210							1,267	141,253	2,444	2,891	3,443
RP-4	233	210	233	226	233	227							1,362	137,466	2,668	2,655	2,886
RP-5	0	0	0	0	0	0							0	25,647	0	0	0
RP-6	0	0	0	0	0	0							0	9,983	0	0	0
RP-7	141	128	144	139	141	139							832	70,205	1,634	1,628	1,786
RP-8	216	193	210	198	201	193							1,209	29,783	2,798	3,228	3,515
Field Total:	1,367	1,236	1,362	1,317	1,355	1,314	0	0	0	0	0	0	7,950	686,463	16,099	16,849	17,936
Daily Avg.(mmscfd)	44	44	44	44	44	44	0	0	0	0	0	0	44		44	46	49
Field : Salda Nadi																	
Salda-1	0	0	0	0	0	0	0	0	0	0	0	0	0	36,904	0	0	0
Salda-2	0	0	0	44	76	87	0	0	0	0	0	0	207	28,702	0	0	0
Salda-3	101	57	57	50	49	40							354	30,341	886	1,712	1,809
Salda-4	16	8	7	8	8	4							50	425	136	92	29
Field Total:	116	65	65	101	133	131	0	0	0	0	0	0	611	96,371	1,022	1,804	1,838
Daily Avg.(mmscfd)	4	2	2	3	4	4	0	0	0	0	0	0	3		3	5	5
Field : Sangu																	
Sangu-1	0	0	0	0	0	0	0	0	0	0	0	0	0	116,191	0	0	0
Sangu-3z	0	0	0	0	0	0	0	0	0	0	0	0	0	131,796	0	0	0
Sangu-4	0	0	0	0	0	0	0	0	0	0	0	0	0	87,280			
Sangu-5	0	0	0	0	0	0	0	0	0	0	0	0	0	61,674			
Sangu-7	0	0	0	0	0	0	0	0	0	0	0	0	0	18,202			
Sangu-8	0	0	0	0	0	0	0	0	0	0	0	0	0	37,619			
Sangu-9	0	0	0	0	0	0	0	0	0	0	0	0	0	30,638	0	0	0
Sangu-10	Production Suspended						0	0	0	0	0	0	0				
Sangu-11	0	0	0	0	0	0		0	0	0	0	0	0	6,067	0	0	0
Field Total:	0	0	0	0	0	0	0	0	0	0	0	0	0	489,467	0	0	0

Monthly Production by Field and Well upto June 2022



HYDROCARBON UNIT

Energy & Mineral Resources Division

Figures in mmscf

Well	Jan	Feb	Mar	Apr	May	Jun	Jul	Aug	Sep	Oct	Nov	Dec	Total	Cumulative	2021	2020	2019
Daily Avg.(mmscfd)	0	0	0	0	0	0	0	0	0	0	0	0	0		0	0	0
Field : Semutang																	
Semutang-5													0	12,311	3	104	140
Semutang-6	23	22	25	23	24	22							138	1,749	290	204	161
Field Total:	23	22	25	23	24	22	0	0	0	0	0	0	138	14,061	293	308	301
Daily Avg.(mmscfd)	1	1	1	1	1	1	0	0	0	0	0	0	1		1	1	1
Field : Shahbazpur																	
Shahbazpur-1	0	0	0	0	0	0							0	22,533	48	254	874
Shahbazpur-2	690	620	556	664	631	631							3,792	32,331	6,132	5,129	6,196
Shahbazpur-3	677	609	660	654	653	607							3,861		7,520	6,301	6,668
Shahbazpur-4	618	576	597	613	563	617							3,584	30,712	5,987	2,374	5,764
Field Total:	1,985	1,805	1,813	1,932	1,847	1,855	0	0	0	0	0	0	11,237	85,576	19,686	14,058	19,501
Daily Avg.(mmscfd)	64	64	58	64	60	62	0	0	0	0	0	0	62		54	38	53
Field : Srikail																	
Srikail-2	290	241	273	283	272	259							1,617	52,280	2,981	4,450	5,288
Srikail-3	232	168	178	175	175	161							1,090	45,148	1,880	3,360	3,988
Srikail-4	628	570	611	580	592	574							3,555	24,896	7,309	2,561	3,026
East 1	216	215	235	223	225	213							1,327	3,181	1,854		
Field Total:	1,366	1,195	1,296	1,261	1,264	1,208	0	0	0	0	0	0	7,589	125,505	14,024	10,371	12,301
Daily Avg.(mmscfd)	44	43	42	42	41	40	0	0	0	0	0	0	42		33	28	34
Field : Sundalpur																	
Sundalpur -1	0	0	0	0	0	0	0	0	0	0	0	0	0	9,809	0	0	0
Sundalpur -2	228	205	233	231	239	234							1,371	11,520	2,752	2,649	2,572
Field Total:	228	205	233	231	239	234	0	0	0	0	0	0	1,371	21,329	2,752	2,649	2,572
Daily Avg.(mmscfd)	7	7	8	8	8	8	0	0	0	0	0	0	8		8	7	7
Field : Sylhet																	
Sylhet-3	Production Suspended													89,032			
Sylhet-6	Production Suspended													91,748			
Sylhet-7	26	25	29	28	29	28							164	31,112	1,207	1,377	1,373

Monthly Production by Field and Well upto June 2022



HYDROCARBON UNIT
Energy & Mineral Resources Division

Figures in mmscf

Well	Jan	Feb	Mar	Apr	May	Jun	Jul	Aug	Sep	Oct	Nov	Dec	Total	Cumulative	2021	2020	2019
Surma-1	86	69	36	34	36	34							295	6,823	0	0	0
Sylhet-9	140	109	126	118	119	115							727	1,245	518		
Field Total:	252	203	190	180	184	177	0	0	0	0	0	0	1,186	219,960	1,207	1,377	1,373
Daily Avg.(mmscfd)	8	7	6	6	6	6	0	0	0	0	0	0	7		3	4	4
Field :	Titas																
Titas-1	512	457	505	502	423	494							2,892	460,834	6,039	5,626	6,648
Titas-2	754	677	748	724	587	704							4,194	469,127	9,335	9,217	10,877
Titas-3	0	0	0	0	0	0							0	314,888	0	0	0
Titas-4	823	738	811	774	656	771							4,574	404,945	9,551	9,356	11,013
Titas-5	850	775	857	840	752	836							4,909	464,296	9,889	9,526	11,720
Titas-6	852	770	860	837	818	835							4,973	396,870	9,754	9,401	9,613
Titas-7	703	635	704	685	590	716							4,033	365,453	4,528	1,784	10,244
Titas-8	567	520	566	554	538	542							3,287	293,457	6,569	5,115	5,851
Titas-9	541	509	561	548	531	534							3,224	298,087	6,404	5,770	6,200
Titas-10	703	621	690	655	648	655							3,973	225,751	7,512	7,397	7,869
Titas-11	772	691	748	717	697	678							4,303	277,049	7,571	9,440	8,834
Titas-12	399	371	432	423	390	426							2,441	118,246	4,363	5,428	5,239
Titas-13	0	0	0	0	0	0							0	194,541	0	0	4,449
Titas-14	0	0	0	0	0	0							0	163,216	2,195	4,966	6,070
Titas-15	190	166	176	161	157	200							1,048	153,041	3,194	4,306	4,978
Titas-16	572	511	568	549	533	574							3,308	169,872	6,637	6,373	7,209
Titas-17	393	341	392	373	394	378							2,271	56,987	4,450	4,969	5,794
Titas-18	453	374	434	440	415	417							2,532	56,909	5,093	5,166	6,113
Titas-19	468	428	468	459	417	464							2,704	46,286	5,187	4,754	5,592
Titas-20	331	294	325	324	304	290							1,867	32,133	4,031	3,817	3,589
Titas-21	303	281	319	312	295	289							1,799	19,979	3,020	2,892	3,036
Titas-22	0	0	0	0	0	0							0	30,349	362	2,436	3,133
Titas-27	540	460	516	493	474	477							2,959	48,051	5,418	5,233	5,602
Titas-23	536	486	550	537	549	532							3,190	29,916	6,314	5,328	5,079
Titas-24	0	0	0	0	0	0							0	9,019	0	1,238	2,789
Titas-25	469	426	469	459	433	474							2,730	32,231	5,439	5,424	6,424
Titas-26	788	704	779	773	738	776							4,558	50,600	9,188	8,961	8,628

Monthly Production by Field and Well upto June 2022



HYDROCARBON UNIT
Energy & Mineral Resources Division

Figures in mmscf

Well	Jan	Feb	Mar	Apr	May	Jun	Jul	Aug	Sep	Oct	Nov	Dec	Total	Cumulative	2021	2020	2019
Field Total:	12,518	11,234	12,478	12,139	11,340	12,061	0	0	0	0	0	0	71,770	5,182,134	142,044	143,923	172,591
Daily Avg.(mmscfd)	404	401	403	405	366	402	0	0	0	0	0	0	397		389	393	473
Field : Begumganj																	
Begumganj-3	259	233	256	245	250	245							1,489	9,767	2,719	1,940	2,150
Field Total:	259	233	256	245	250	245	0	0	0	0	0	0	1,489	9,767	2,719	1,940	2,150
Daily Avg.(mmscfd)	8	8	8	8	8	8	0	0	0	0	0	0	8		7	5	6
Field : Rupganj																	
Rupganj-1	0	0	0	0	0	0							0	679	0	0	0
Field Total:	0	0	0	0	0	0	0	0	0	0	0	0	0	679	0	0	0
Daily Avg.(mmscfd)	0	0	0	0	0	0	0	0	0	0	0	0	0		0	0	0
Grand Total (in Bcf)	71.51	64.81	72.15	68.35	67.05	70.09	0.00	0.00	0.00	0.00	0.00	0.00	414.0	19,506.24	858.5	875.1	933.8
Daily Avg.(mmscfd)	2,307	2,315	2,327	2,278	2,163	2,336	0	0	0	0	0	0	2,287		2,352	2,391	2,558

Monthly Condensate Production by Fields upto June 2022



Field Name	Jan	Feb	Mar	Apr	May	Jun	Jul	Aug	Sep	Oct	Nov	Dec	Total	Cumulative	2021	2020	2019	
													000' bbl					
Bakhrabad	1,334	1,269	1,263	1,141	1,232	1,153							7,392	1,068	14,882	18,004	8,201	
Daily Avg.	43	45	41	38	40	38	0	0	0	0	0	0	41		41	49	22	
Bangura	4,079	4,229	4,552	3,991	4,017	4,493							25,361	1,365	75,148	95,394	104,034	
Daily Avg.	132	151	147	133	130	150	0	0	0	0	0	0	140		206	261	285	
Beani Bazar	3,383	2,952	3,113	2,973	3,165	3,088							18,674	1,724	41,982	46,061	50,497	
Daily Avg.	109	105	100	99	102	103	0	27	0	0	0	0	103		115	126	138	
Bibiyana	142,151	127,776	145,907	132,626	129,321	137,231							815,012	29,893	2,048,709	2,780,633	3,094,275	
Daily Avg.	4,586	4,563	4,707	4,421	4,172	4,574	0	0	0	0	0	0	4,503		5,613	7,597	8,477	
Chattak	0	0	0	0	0	0	0	0	0	0	0	0	0	4	0	0	0	
Daily Avg.	0	0	0	0	0	0	0	0	0	0	0	0	0		0	0	0	
Fenchuganj	301	287	257	228	219	191							1,483	120	2,460	527	738	
Daily Avg.	10	10	8	8	7	6	0	0	0	0	0	0	8		7	1	2	
Feni	0	0	0	0	0	0	0	0	0	0	0	0	0	110	0	0	0	
Daily Avg.	0	0	0	0	0	0	0	0	0	0	0	0	0		0	0	0	
Habiganj	313	292	300	203	214	216							1,538	147	3,416	5,510	7,233	
Daily Avg.	10	10	10	7	7	7	0	0	0	0	0	0	8		9	15	20	
Jalalabad	33,083	28,046	28,603	28,715	27,447	26,017							171,911	11,343	346,435	367,161	318,424	
Daily Avg.	1,067	1,002	923	957	885	867	0	0	0	0	0	0	950		949	1,003	872	
Kailas Tila	11,096	10,036	10,704	10,448	15,874	14,490							72,648	8,342	126,611	177,210	170,713	
Daily Avg.	358	358	345	348	512	483	0	0	0	0	0	0	401		347	484	468	
Kamta	Production Suspended										0	0		4				
Daily Avg.	0										0	0	0		0	0	0	0
Meghna	14,508	387	443	427	407	303							16,475	143	5,456	6,652	7,098	
Daily Avg.	468	14	14	14	13	10	0	0	0	0	0	0	91		15	18	19	
Moulavi Bazar	99	92	82	50	42	47							413	120	847	1,262	745	
Daily Avg.	3	3	3	2	1	2	0	0	0	0	0	0	2		2	3	2	

Monthly Condensate Production by Fields upto June 2022

Field Name	Jan	Feb	Mar	Apr	May	Jun	Jul	Aug	Sep	Oct	Nov	Dec	Total	Cumulative	2021	2020	2019	
														000' bbl				
Narshingdi	1,594	1,324	1,305	1,186	1,206	1,178							7,793	468	14,370	13,907	14,029	
Daily Avg.	51	47	42	40	39	39	0	0	0	0	0	0	43		39	38	38	
Rashidpur	1,250	1,144	1,192	1,176	1,170	1,179							7,111	829	14,274	15,049	16,268	
Daily Avg.	40	41	38	39	38	39	0	0	0	0	0	0	39		39	41	45	
Saldanadi	17	10	15	29	69	63							203	59	118	240	302	
Daily Avg.	1	0	0	1	2	2	0	0	0	0	0	0	1		0	1	1	
Sangu	0	0	0	0	0	0	0	0	0	0	0	0	0	37	0	0	0	
Daily Avg.	0	0	0	0	0	0	0	0	0	0	0	0	0		0	0	0	
Semutang	0	0	0	0	0	0	0	0	0	0	0	0	0	5	0	0	4	
Daily Avg.	0	0	0	0	0	0	0	0	0	0	0	0	0		0	0	0	
Shahbazpur	242	219	218	229	218	219							1,345	14	2,655	1,839	2,034	
Daily Avg.	8	8	7	8	7	7	0	0	0	0	0	0	7		7	5	6	
Srikail	5,986	5,235	5,481	5,150	5,181	4,908							31,941	277	61,474	21,213	34,193	
Daily Avg.	193	187	177	172	167	164	0	0	0	0	0	0	176		168	58	94	
Sundalpur	11	12	13	13	12	10							71	1	121	89	172	
Daily Avg.	0	0	0	0	0	0	0	0	0	0	0	0	0		0	0	0	
Sylhet	1,552	1,300	1,266	1,002	1,181	1,116							7,417	832	10,261	8,982	9,691	
Daily Avg.	50	46	41	33	38	37	0	0	0	0	0	0	41		28	25	27	
Titas	10,814	9,928	10,164	9,580	9,024	9,161							58,671	5,651	108,670	117,408	141,979	
Daily Avg.	349	355	328	319	291	305	0	0	0	0	0	0	324		298	321	389	
Begumganj	69	70	61	65	79	69							413	3	831	380	711	
Daily Avg.	2	3	0	0	0	2	0	0	0	0	0	0	2		2	1	2	
Rupganj	0	0	0	0	0	0	0	0	0	0	0	0	0	1	0	0	0	
Daily Avg.	0	0	0	0	0	0	0	0	0	0	0	0	0		0	0	0	
Total (000'bbl)	232	195	215	199	200	205	0	0	0	0	0	0	1,246	62,560	2,879	3,678	3,981	
Daily Avg. (000'bbl)	7.5	7.0	6.9	6.6	6.5	7	0.0	0.0	0.0	0.0	0	0	7		7.9	10.0	10.9	

Note: Historical condensate figure of Sangu available from 2006. Sylhet available from August 1964

Monthly Water Production by Fields in June 2022



HYDROCARBON UNIT
Energy & Mineral Resources Division

Field Name	Jan	Feb	Mar	Apr	May	Jun	Jul	Aug	Sep	Oct	Nov	Dec	Total	2021	
Bakhrabad	2,120	1,941	2,191	2,074	2,209	2,136							12,671	23,532	23,912
Daily Avg.	68	69	71	69	71	71	0	0	0	0	0	0	70	64	65
Bangura	2,228	41,642	69,582	66,647	26,292	3,077							209,468	247,538	42,021
Daily Avg.	72	1,487	2,245	2,222	848	103	0	0	0	0	0	0	1,157	678	115
Beani Bazar	17,756	16,009	17,866	17,319	18,258	17,892							105,100	202,439	176,527
Daily Avg.	573	572	576	577	589	596	0	0	0	0	0	0	581	555	482
Bibiyana	19,848	18,265	22,262	20,877	23,514	25,905							130,671	211,873	209,941
Daily Avg.	640	652	718	696	759	864	0	0	0	0	0	0	722	580	574
Chattak	0	0	0	0	0	0	0	0	0	0	0	0			
Daily Avg.	0	0	0	0	0	0	0	0	0	0	0	0	0	0	0
Fenchuganj	593	1,105	3,128	3,688	3,630	3,642							15,786	22,412	28,653
Daily Avg.	19	39	101	123	117	121	0	0	0	0	0	0	87	61	78
Feni	0	0	0	0	0	0	0	0	0	0	0	0	0	0	0
Daily Avg.	0	0	0	0	0	0	0	0	0	0	0	0	0	0	0
Habiganj	7,129	7,965	5,538	5,121	4,574	6,099							36,426	40,135	15,442
Daily Avg.	230	284	179	171	148	203	0	0	0	0	0	0	201	110	42
Jalalabad	6,413	5,786	6,027	6,204	3,952	2,425							30,807	63,469	72,877
Daily Avg.	207	207	194	207	127	81	0	0	0	0	0	0	170	174	199
Kailas Tila	6,699	6,140	6,932	6,975	8,099	9,143							43,988	145,547	100,033
Daily Avg.	216	219	224	233	261	305	0	0	0	0	0	0	243	399	273
Kamta	0	0	0	0	0	0	0	0	0	0	0	0			
Daily Avg.	0	0	0	0	0	0	0	0	0	0	0	0	0	0	0
Meghna	27,644	1,909	2,232	2,405	3,957	5,743							43,890	22,459	16,447
Daily Avg.	892	68	72	80	128	191	0	0	0	0	0	0	242	62	45
Moulavi Baza	303	225	234	237	215	254							1,468	2,559	6,968
Daily Avg.	10	8	8	8	7	8	0	0	0	0	0	0	8	7	19
Narshingdi	2,074	791	868	840	867	879							6,319	10,185	10,191
Daily Avg.	67	28	28	28	28	29	0	0	0	0	0	0	35	28	28
Rashidpur	19,694	17,866	19,845	19,304	19,979	19,434							116,122	237,280	144,432
Daily Avg.	635	638	640	643	644	648	0	0	0	0	0	0	642	650	395
Saldanadi	149	107	100	130	163	142							791	1,169	1,977
Daily Avg.	5	4	3	4	5	5	0	0	0	0	0	0	4	3	5

Monthly Water Production by Fields in June 2022



HYDROCARBON UNIT

Energy & Mineral Resources Division

Field Name	Jan	Feb	Mar	Apr	May	Jun	Jul	Aug	Sep	Oct	Nov	Dec	Total	2021	2020
Sangu	0	0	0	0	0	0	0	0	0	0	0	0	0	0	0
Daily Avg.	0	0	0	0	0	0	0	0	0	0	0	0	0	0	0
Semutang	124	129	136	3,936	4,169	3,936							12,430	1,175	911
Daily Avg.	4	5	4	131	134	131	0	0	0	0	0	0	69	3	2
Shahbazpur	2,441	2,217	2,219	2,368	2,264	2,278							13,787	24,246	17,316
Daily Avg.	79	79	72	79	73	76	0	0	0	0	0	0	76	66	47
Srikail	1,707	1,382	1,529	1,519	1,538	1,529							9,204	15,601	10,292
Daily Avg.	55	49	49	51	50	51	0	0	0	0	0	0	51	43	28
Sundalpur	44	42	46	45	47	45							269	481	233
Daily Avg.	1	2	1	2	2	2	0	0	0	0	0	0	1	1	1
Sylhet	14,402	12,978	14,146	13,823	14,263	13,799							83,411	139,166	114,597
Daily Avg.	465	464	456	461	460	460	0	0	0	0	0	0	461	381	313
Titas	15,432	13,815	16,078	15,929	15,042	16,841							93,137	213,927	287,912
Daily Avg.	498	493	519	531	485	561	0	0	0	0	0	0	515	586	787
Begumganj	89	81	68	69	91	93							491	962	418
Daily Avg.	3	3	2	2	3	3	0	0	0	0	0	0	3	3	1
Rupganj	0	0	0	0	0	0	0	0	0	0	0	0	0	0	0
Daily Avg.	0	0	0	0	0	0	0	0	0	0	0	0	0	0	0
Total (000'bl)	146,889	150,395	191,027	189,510	153,123	135,292	0	0	0	0	0	0	966,236	1,626,156	1,281,101
Daily Avg. (000'bbl)	4,738	5,371	6,162	6,317	4,939	4,510	0	0	0	0	0	0	5,338	4,455	3,500

Conditions of Field and Well upto June 2022



Well	company	well type	Discovery	production start	Drilled depth (ft)	Pressure	Pressure type	Completion Zone
Field : Bakharabad								
BKB-1	BGFCL	Vertical	1969	June,1969	9309		FWHP	J
BKB-2	BGFCL	Directional	1969	October,1981	7496	248-274	FWHP	G
BKB-3	BGFCL	Directional	1969	April,1982	9339	356-412	FWHP	G
BKB-4	BGFCL	Directional	1969	June,1982	9430			D
BKB-5	BGFCL	Directional	1969	Sept,1982	9675	1555-1646	FWHP	B
BKB-6	BGFCL	Directional	1969	March,1989	8785			J
BKB-7	BGFCL	Directional	1969	July,1989	8605		FWHP	J
BKB-8	BGFCL	Directional	1969	Sept,1989	8840	490-523	FWHP	J
BKB-9	BGFCL	Vertical	1969	August,2013	8318	1005-1097	FWHP	G
BKB-10	BGFCL	Directional	1969	June,2016	9291	1010-1102	FWHP	K
Field : Bangura								
Bangura-1	Tullow		2004			887-940	FWHP	D
Bangura-2	Tullow		2004			587-685	FWHP	D/E
Bangura-3	Tullow		2004			719-789	FWHP	D
Bangura-6	Tullow		2004			708-780	FWHP	D
Bangura-5	Tullow		2004			579-621	FWHP	D
Field : Beani Bazar								
BB-1	SGFL		1981	July,1999	13480	580-620	SIWHP	Upper
BB-2	SGFL		1981	July,1999	12048	3210-3220	FWHP	Upper
Field : Bibiyana								
BY-1	Chevron		1998			1547-2007	FWHP	BB60, BB66
BY-2	Chevron		1998			1313-1390	FWHP	BB60, BH20A, BH20E
BY-3	Chevron		1998			1363-1403	FWHP	BB70
BY-4	Chevron		1998			1330-1390	FWHP	BH10
BY-5	Chevron		1998			1254-1299	FWHP	BH20A, BH20B, BH20C, BH20D
BY-6	Chevron		1998			1250-1486	FWHP	BB70
BY-7	Chevron		1998			1454-1566	FWHP	BH10
BY-8	Chevron		1998			1270-1297	FWHP	BH20A, BH20B
BY-9	Chevron		1998			1243-1273	FWHP	BH10
BY-10	Chevron		1998			1465-1533	FWHP	BB60
BY-11	Chevron		1998			1260-1284	FWHP	BH20A, BH20B
BY-12	Chevron		1998			1259-1332	FWHP	BB70
BY-13	Chevron		1998			1300-1356	FWHP	BH20A, BH20B
BY-14	Chevron		1998			1342-1632	FWHP	BH20A, BH20B
BY-15	Chevron		1998			2189-2240	FWHP	BB60
BY-16	Chevron		1998			1381-1644	FWHP	BH10, BH20D

Conditions of Field and Well upto June 2022



Well	company	well type	Discovery	production start	Drilled depth (ft)	Pressure	Pressure type	Completion Zone
BY-17	<i>Chevron</i>		<i>1998</i>			<i>2104-2229</i>	<i>FWHP</i>	<i>BB60</i>
BY-18	<i>Chevron</i>		<i>1998</i>			<i>1904-2218</i>	<i>FWHP</i>	<i>BB60</i>
BY-19	<i>Chevron</i>		<i>1998</i>			<i>1354-1477</i>	<i>FWHP</i>	<i>BH10, BH20A</i>
BY-20	<i>Chevron</i>		<i>1998</i>			<i>1248-1262</i>	<i>FWHP</i>	<i>BH20D, BH20A, BH10</i>
BY-21	<i>Chevron</i>		<i>1998</i>			<i>1333-1348</i>	<i>FWHP</i>	<i>BH20A, BH20B, BH10</i>
BY-22	<i>Chevron</i>		<i>1998</i>			<i>1552-1586</i>	<i>FWHP</i>	<i>BB60</i>
BY-23	<i>Chevron</i>		<i>1998</i>			<i>1739-2021</i>	<i>FWHP</i>	<i>BH10, BH20A, BH20B, BH20C</i>
BY-24	<i>Chevron</i>		<i>1998</i>			<i>1337-2091</i>	<i>FWHP</i>	<i>BB60</i>
BY-25	<i>Chevron</i>		<i>1998</i>			<i>1728-1857</i>	<i>FWHP</i>	<i>BB60, BB66</i>
BY-26	<i>Chevron</i>		<i>1998</i>			<i>1877-2094</i>	<i>FWHP</i>	<i>BB60, BB64</i>
Field : Chattak								
Ch-1	SGFL		1959					
Field : Fenchuganj								
Fenchuganj-2	<i>BAPEX</i>		<i>1988</i>	<i>May, 2004</i>				
Fenchuganj-3	<i>BAPEX</i>		<i>1988</i>	<i>February, 2005</i>		<i>2004-2010</i>		<i>upper</i>
Fenchuganj-4	<i>BAPEX</i>		<i>1988</i>			<i>2037-2065</i>		
Field : Feni								
Feni-1	<i>BAPEX</i>		<i>1981</i>					
Feni-2	<i>BAPEX</i>		<i>1981</i>					
Feni-3	<i>BAPEX</i>		<i>1981</i>					
Feni-4	<i>BAPEX</i>		<i>1981</i>					
Feni-5	<i>BAPEX</i>		<i>1981</i>					
Field : Habiganj								
Hbj-1	<i>BGFCL</i>	<i>Vertical</i>	<i>1963</i>	<i>Feb,1969</i>	<i>11500</i>		<i>FWHP</i>	<i>upper</i>
Hbj-2	<i>BGFCL</i>	<i>Vertical</i>	<i>1963</i>	<i>Feb,1969</i>	<i>5100</i>		<i>FWHP</i>	<i>upper</i>
Hbj-3	<i>BGFCL</i>	<i>Vertical</i>	<i>1963</i>	<i>July,1985</i>	<i>5282</i>	<i>1478-1486</i>	<i>FWHP</i>	<i>upper</i>
Hbj-4	<i>BGFCL</i>	<i>Vertical</i>	<i>1963</i>	<i>May,1985</i>	<i>5249</i>	<i>1460-1467</i>	<i>FWHP</i>	<i>upper</i>
Hbj-5	<i>BGFCL</i>	<i>Directional</i>	<i>1963</i>	<i>Feb,1992</i>	<i>11552</i>	<i>1440-1446</i>	<i>FWHP</i>	<i>upper</i>
Hbj-6	<i>BGFCL</i>	<i>Vertical</i>	<i>1963</i>	<i>Feb,1992</i>	<i>5515</i>	<i>1375-1379</i>	<i>FWHP</i>	<i>upper</i>
Hbj-7	<i>BGFCL</i>	<i>Vertical</i>	<i>1963</i>	<i>April,2000</i>	<i>10236</i>	<i>1331-1139</i>	<i>FWHP</i>	<i>upper</i>
Hbj-8	<i>BGFCL</i>	<i>Vertical</i>	<i>1963</i>	<i>May, 2000</i>	<i>5280</i>			<i>upper</i>
Hbj-9	<i>BGFCL</i>	<i>Vertical</i>	<i>1963</i>	<i>July,1998</i>	<i>5249</i>			<i>upper</i>
Hbj-10	<i>BGFCL</i>	<i>Vertical</i>	<i>1963</i>	<i>Apr, 2000</i>	<i>5133</i>	<i>1322-1331</i>	<i>FWHP</i>	<i>upper</i>
Hbj-11	<i>BGFCL</i>	<i>Vertical</i>	<i>1963</i>	<i>February,2008</i>	<i>10499</i>	<i>1417-1423</i>	<i>FWHP</i>	<i>upper</i>
Field : Jalalabad								
JB-1	<i>Chevron</i>		<i>1989</i>			<i>1333-1436</i>	<i>FWHP</i>	<i>BB60, BB50</i>

Conditions of Field and Well upto June 2022



Well	company	well type	Discovery	production start	Drilled depth (ft)	Pressure	Pressure type	Completion Zone
JB-2	<i>Chevron</i>		<i>1989</i>			<i>1279-1294</i>	<i>FWHP</i>	<i>BB50, BB60</i>
JB-3	<i>Chevron</i>		<i>1989</i>			<i>1332-1375</i>	<i>FWHP</i>	<i>BB50, BB60</i>
JB-4	<i>Chevron</i>		<i>1989</i>			<i>1365-1425</i>	<i>FWHP</i>	<i>BB60</i>
JB-6	<i>Chevron</i>		<i>1989</i>			<i>1354-1362</i>	<i>FWHP</i>	<i>BB60, BB50</i>
JB-7	<i>Chevron</i>		<i>1989</i>			<i>1666-1679</i>	<i>FWHP</i>	<i>BB20</i>
JB-8	<i>Chevron</i>		<i>1989</i>			<i>1362-1370</i>	<i>FWHP</i>	<i>BB50, BB60</i>
Field : Kailas Tila								
KTL-1	<i>SGFL</i>		<i>1962</i>	<i>June, 1983</i>	<i>12417</i>	<i>0</i>	<i>SIWHP</i>	
KTL-2	<i>SGFL</i>		<i>1962</i>	<i>Feb, 1995</i>		<i>2225-2230</i>	<i>FWHP</i>	
KTL-3	<i>SGFL</i>		<i>1962</i>	<i>March, 1995</i>		<i>2470-2495</i>	<i>FWHP</i>	
KTL-4	<i>SGFL</i>		<i>1962</i>	<i>March, 1997</i>		<i>2360-2410</i>	<i>FWHP</i>	
KTL-5	<i>SGFL</i>		<i>1962</i>	<i>Sep, 2006</i>		<i>0</i>	<i>SIWHP</i>	
KTL-6	<i>SGFL</i>		<i>1962</i>	<i>Aug, 2007</i>		<i>2490-2495</i>	<i>FWHP</i>	
KTL-7	<i>SGFL</i>		<i>1962</i>			<i>0</i>	<i>SIWHP</i>	
Field : Kamta								
Kamta-1	<i>BGFCL</i>	<i>Vertical</i>	<i>1981</i>	<i>july,1982</i>	<i>11857</i>			<i>N/A</i>
Field : Meghna								
M-1	<i>BGFCL</i>	<i>Vertical</i>	<i>2004</i>	<i>july,1990</i>	<i>10069</i>	<i>1400-1450</i>	<i>FWHP</i>	<i>A,E,F & G</i>
Field : Moulavi Bazar								
MV Bazar-2	<i>Chevron</i>		<i>1997</i>			<i>800-820</i>	<i>FWHP</i>	<i>BB70</i>
MV Bazar-3	<i>Chevron</i>		<i>1997</i>			<i>800-820</i>	<i>FWHP</i>	<i>BB70</i>
MV Bazar-4	<i>Chevron</i>		<i>1997</i>			<i>946-952</i>	<i>FWHP</i>	<i>BB20</i>
MV Bazar-5	<i>Chevron</i>		<i>1997</i>			<i>0</i>	<i>SIWHP</i>	<i>BB60</i>
MV Bazar-6	<i>Chevron</i>		<i>1997</i>			<i>822-890</i>	<i>FWHP</i>	<i>BB20</i>
MV Bazar-7	<i>Chevron</i>		<i>1997</i>			<i>844-901</i>	<i>FWHP/SIWHP</i>	<i>BB20</i>
MV Bazar-9	<i>Chevron</i>		<i>1997</i>			<i>0</i>	<i>SIWHP</i>	<i>BB46, BB48, BB60</i>
Field : Narshingdi								
N-1	<i>BGFCL</i>	<i>vertical</i>	<i>1990</i>	<i>october,1990</i>	<i>11320</i>	<i>1143-1197</i>	<i>FWHP</i>	<i>BL</i>
N-2	<i>BGFCL</i>	<i>vertical</i>	<i>1990</i>	<i>february,2007</i>	<i>10778</i>	<i>1015-1097</i>	<i>FWHP</i>	<i>BL</i>
Field : Rashidpur								
RP-1	<i>SGFL</i>		<i>1960</i>			<i>1290-1291</i>	<i>FWHP</i>	<i>Upper</i>
RP-2	<i>SGFL</i>		<i>1960</i>			<i>73</i>	<i>SIWHP</i>	<i>Lower</i>
RP-3	<i>SGFL</i>		<i>1960</i>			<i>1548-1568</i>	<i>FWHP</i>	<i>Lower</i>
RP-4	<i>SGFL</i>		<i>1960</i>			<i>1450-1655</i>	<i>FWHP</i>	<i>Lower</i>
RP-5	<i>SGFL</i>		<i>1960</i>			<i>2291</i>	<i>SIWHP</i>	<i>Lower</i>
RP-6	<i>SGFL</i>		<i>1960</i>			<i>870</i>	<i>SIWHP</i>	<i>A</i>

Conditions of Field and Well upto June 2022



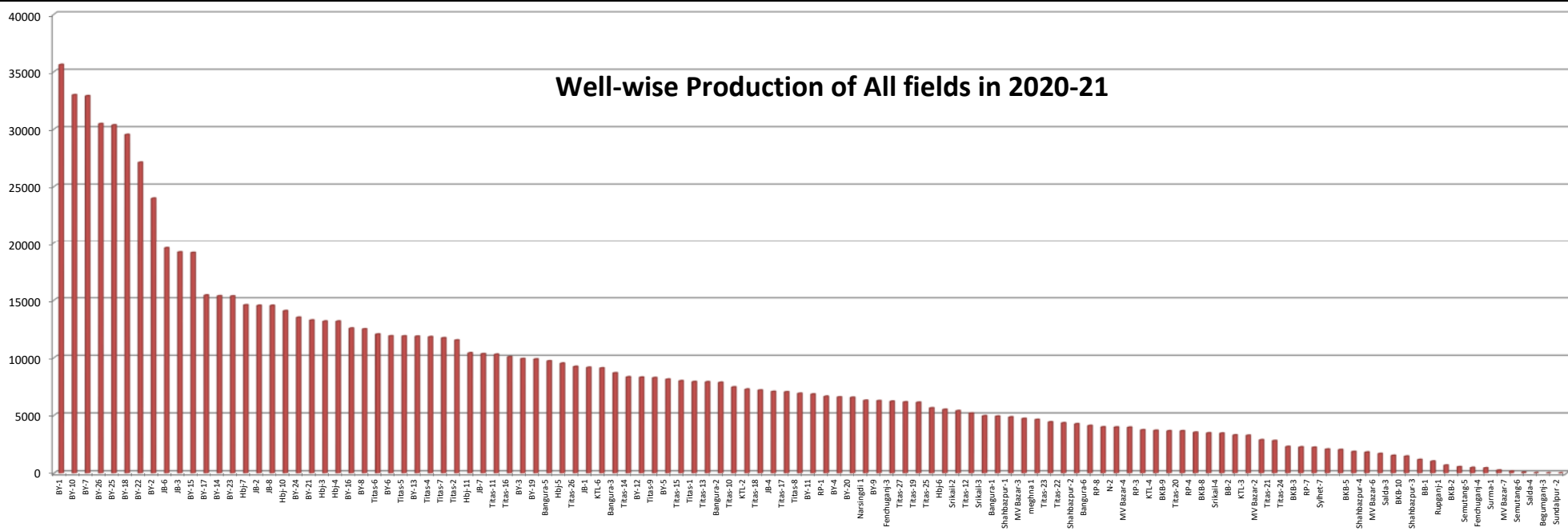
Well	company	well type	Discovery	production start	Drilled depth (ft)	Pressure	Pressure type	Completion Zone
RP-7	SGFL		1960			1308-1338	FWHP	Lower
RP-8	SGFL		1960			1600-1625	FWHP	Upper
Field : Salda Nadi								
Salda-1	BAPEX		1995					
Salda-2	BAPEX		1995					
Salda-3	BAPEX	Directional	1995	February, 2012		639-640, 698-700		Upper/Lower
Salda-4	BAPEX		1995					
Field : Sangu								
Sangu-1	BGFCL		1996					
Sangu-3z	BGFCL		1996					
Sangu-4	BGFCL		1996					
Sangu-5	BGFCL		1996					
Sangu-7	BGFCL		1996					
Sangu-8	BGFCL		1996					
Sangu-9	BGFCL		1996					
Sangu-10	BGFCL		1996					
Sangu-11	BGFCL		1996					
Field : Semutang								
Semutang-5	BAPEX		1967			280-508		Lower Zone
Semutang-6	BAPEX		1967			750-1302		
Field : Shahbazpur								
Shahbazpur-1	BAPEX		1995	May, 2009		2310-3543		Lower Zone
Shahbazpur-2	BAPEX		1995			3541-4133		Lower Zone
Shahbazpur-3	BAPEX		1995			4300		Upper Zone
Shahbazpur-4	BAPEX		1995			4250		Upper Zone
Field : Srikail								
Srikail-2	BAPEX		2012			990-1016		Upper & Lower D
Srikail-3	BAPEX		2012			981-1043		Upper & Lower D
Srikail-4	BAPEX		2012			1018-1068		Upper & Lower D
Field : Sundalpur								
Sundalpur -1	BAPEX		2011					
Sundalpur -2	BAPEX		2011					
Field : Sylhet								
Sylhet-3	SGFL		1955	Aug, 1958				
Sylhet-6	SGFL		1955	Aug, 1964		800-850	SIWHP	
Sylhet-7	SGFL		1955	Apr, 2005		1750-1820	FWHP	Lower Bokabil

Conditions of Field and Well upto June 2022

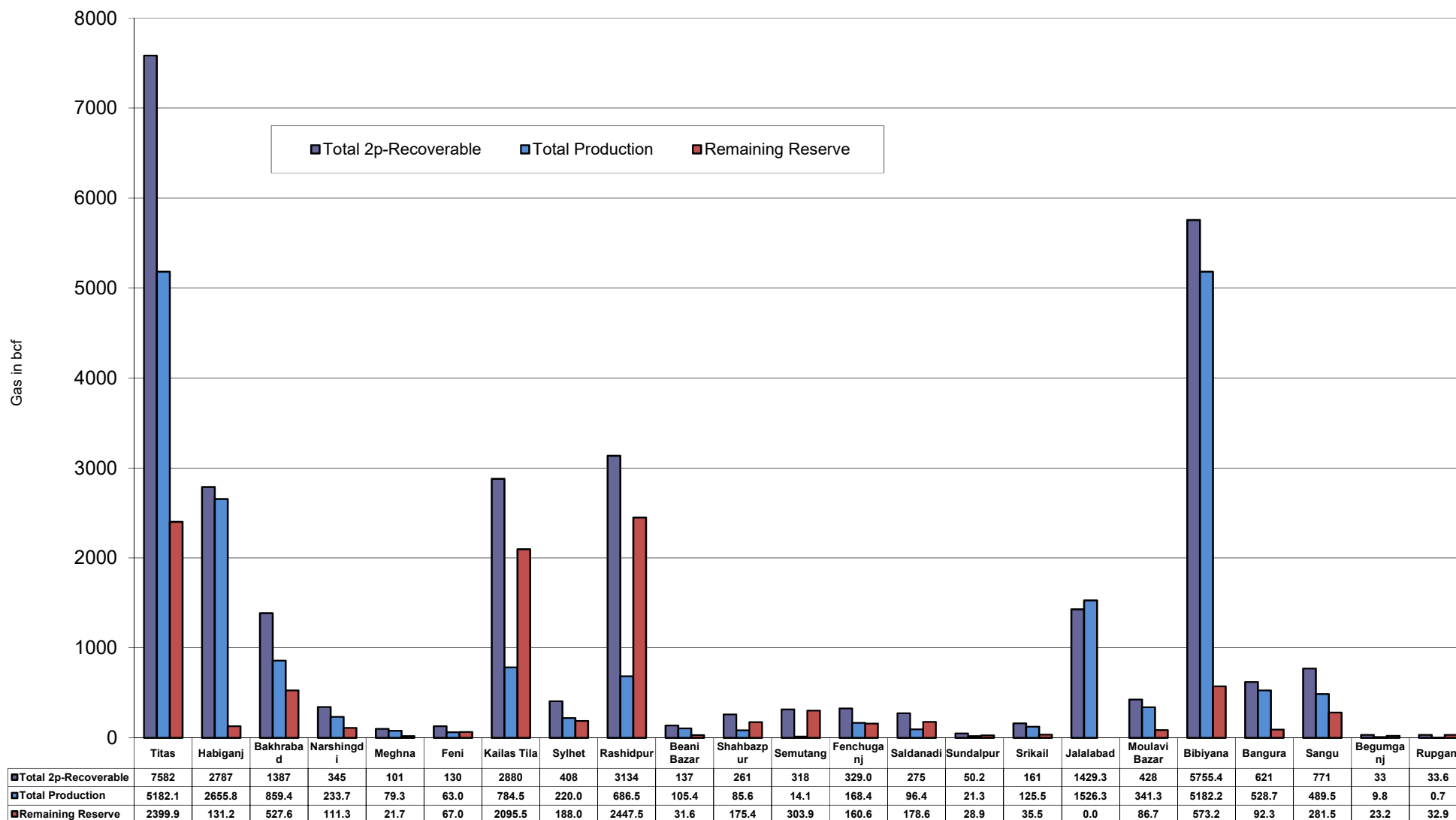


Well	company	well type	Discovery	production start	Drilled depth (ft)	Pressure	Pressure type	Completion Zone
Surma-1	SGFL		1955	June, 2010		230	SIWHP	C & D
Field : Titas								
Titas-1	BGFCL	vertical	1962	Mar,1969	12325	900-925	FWHP	A
Titas-2	BGFCL	vertical	1962	Fen,1969	10574	960-1020	FWHP	A
Titas-3	BGFCL	vertical	1962	sept,1969	9315	0	FWHP	A
Titas-4	BGFCL	vertical	1962	oct,1969	9350	1020-1070	FWHP	A
Titas-5	BGFCL	Directional	1962	jan,1981	10805	990-1035	FWHP	A
Titas-6	BGFCL	vertical	1962	Feb,1984	10072	1195-1225	FWHP	A
Titas-7	BGFCL	Directional	1962	July,1985	11006	1090-1160	FWHP	A
Titas-8	BGFCL	Directional	1962	sept,1985	11760	1000-1030	FWHP	B & C
Titas-9	BGFCL	Directional	1962	jan,1988	11893	1040-1085	FWHP	B & C
Titas-10	BGFCL	Directional	1962	may,1988	12139	1140-1180	FWHP	A
Titas-11	BGFCL	vertical	1962	Jun,1991	10462	1275-1310	FWHP	A
Titas-12	BGFCL	Directional	1962	July,2002	9873	1465-1500	FWHP	A
Titas-13	BGFCL	Directional	1962	June,2000	11487	1085-1115	FWHP	A
Titas-14	BGFCL	Directional	1962	June,2000	11004	1200-1250	FWHP	A
Titas-15	BGFCL	vertical	1962	may,2006	10446	0	FWHP	A
Titas-16	BGFCL	Directional	1962	dec,2005	11673	1205-1225	FWHP	A
Titas-17	BGFCL	vertical	1962	feb,2013	9424	1145-1175	FWHP	A
Titas-18	BGFCL	Directional	1962	august,2013	10932	1165-1190	FWHP	A
Titas-19	BGFCL	Directional	1962	may,2014	12730	1365-1415	FWHP	A
Titas-20	BGFCL	Directional	1962	oct,2013	11585	1370-1440	FWHP	A
Titas-21	BGFCL	Directional	1962	dec,2013	11631	1260-1285	FWHP	A
Titas-22	BGFCL	Directional	1962	march,2014	11926	990-1025	FWHP	A
Titas-27	BGFCL	Directional	1962	april,2014	10292	1245-1265	FWHP	A
Titas-23	BGFCL	Directional	1962	feb,2017	11988	2265-2340	FWHP	C
Titas-24	BGFCL	Directional	1962	oct,2016	12686	1120-1245	FWHP	C
Titas-25	BGFCL	vertical	1962	march,2016	11680	1300-1340	FWHP	A
Titas-26	BGFCL	Directional	1962	july,2016	12618	1840-1875	FWHP	C
Field : Begumganj								
Begumganj-3	BAPEX		1977					
Field : Rupganj								
Rupganj-1	BAPEX		2014			38-88		

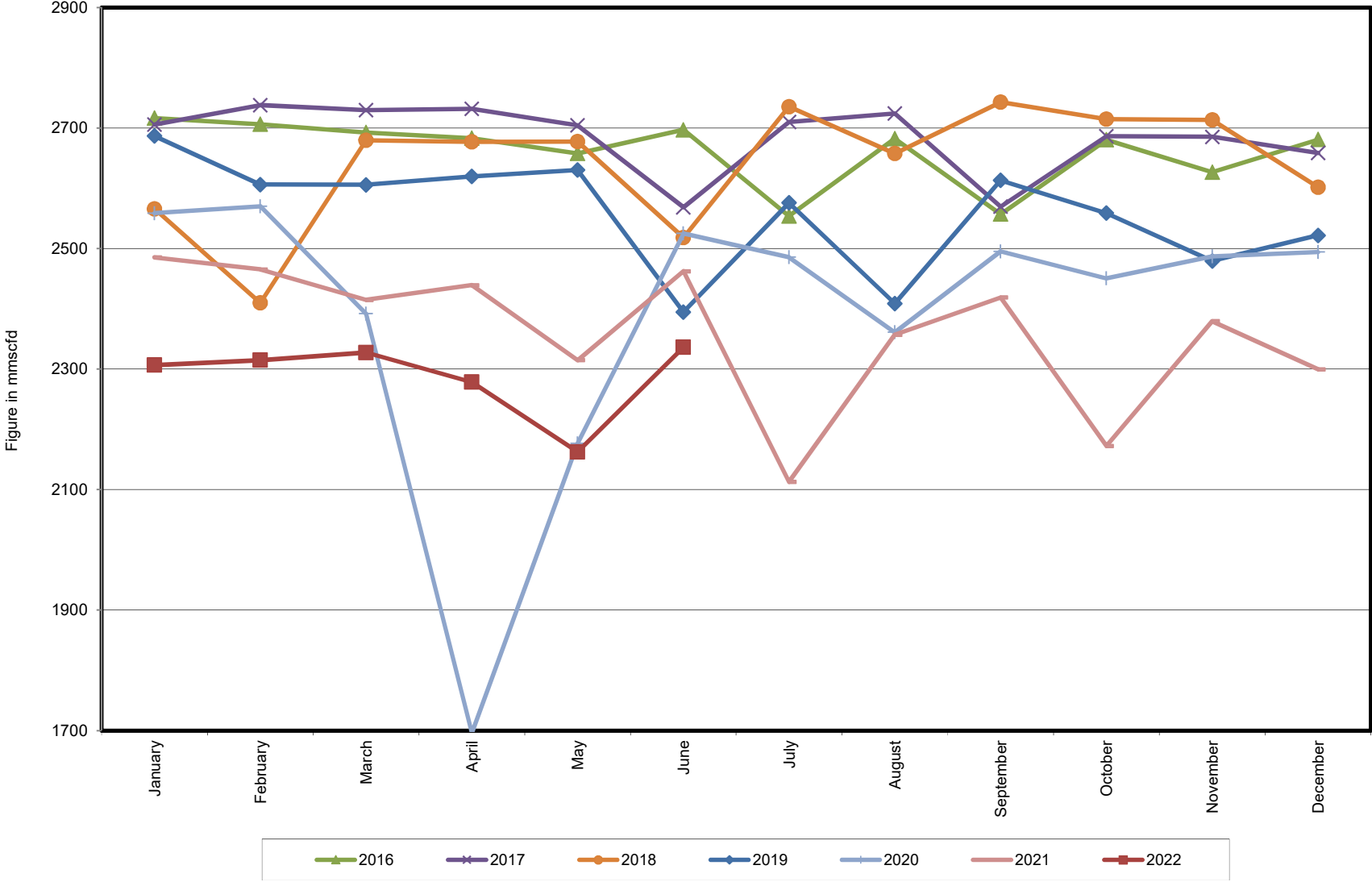
Well-wise Production of All fields in 2020-21



Reserve, Production and Remaining Reserve as of June 2022



Daily Avg. Production From January 2016 to June 2022



Field Wise Daily Avg. Production June 2022

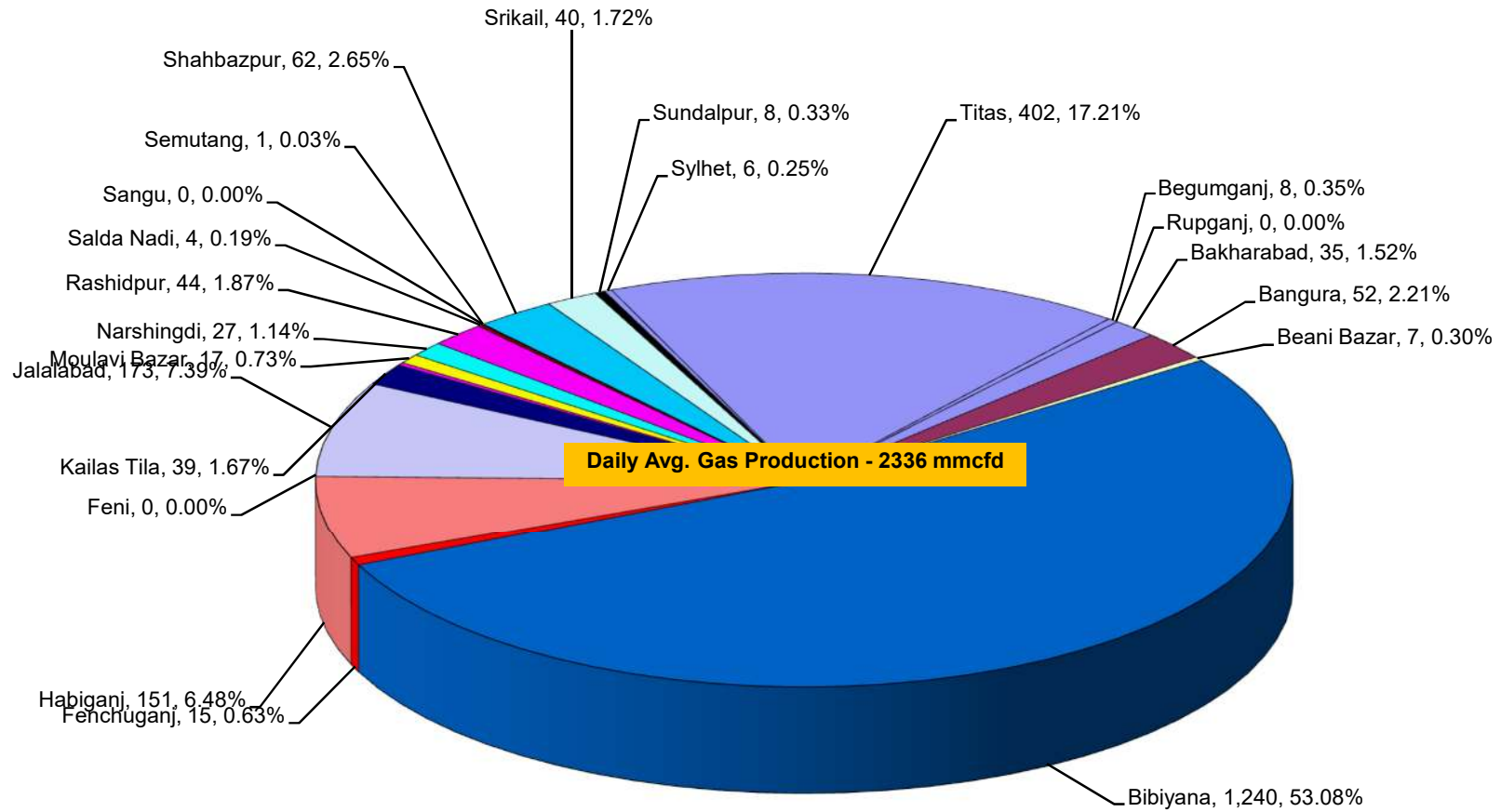
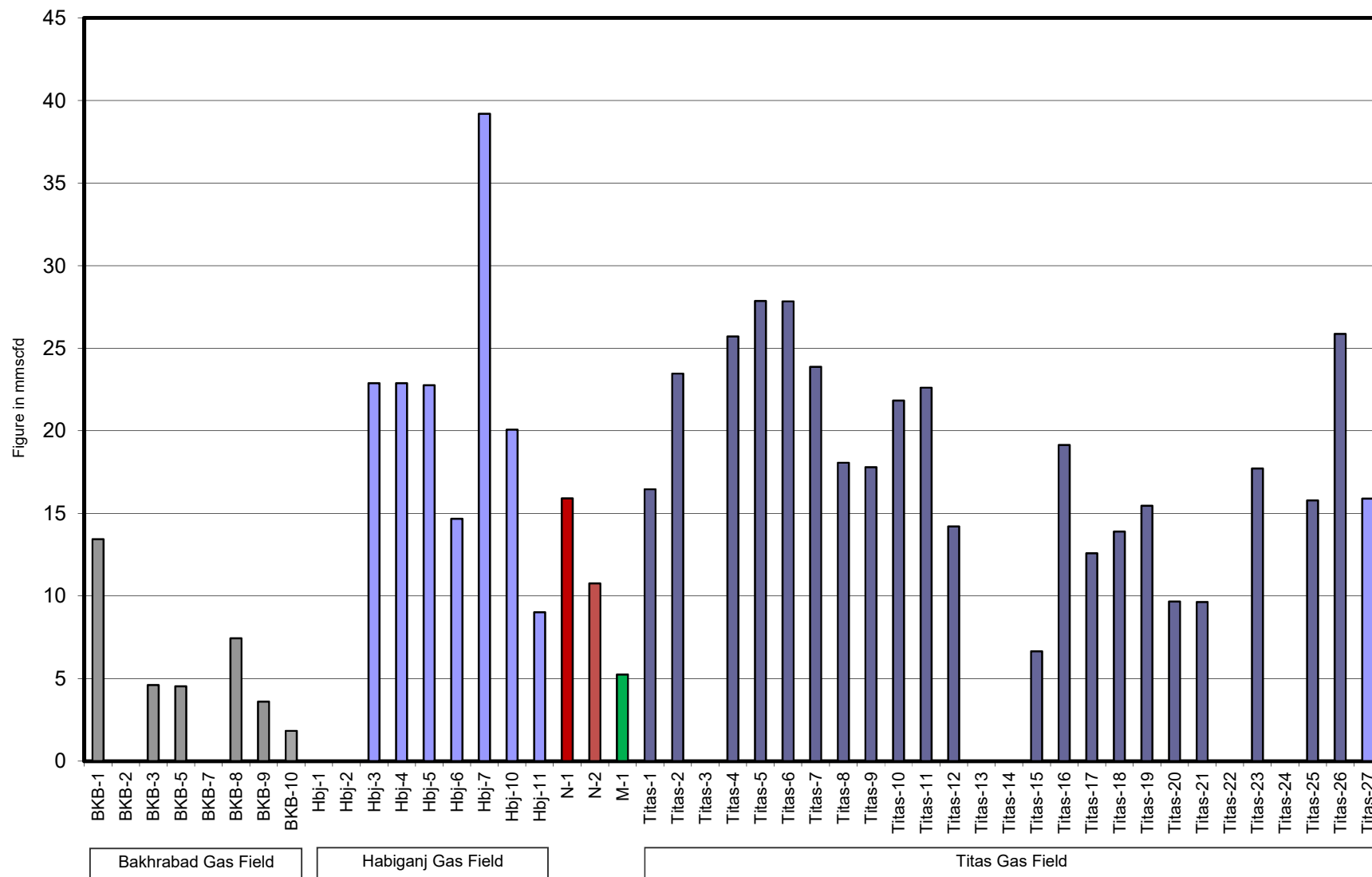


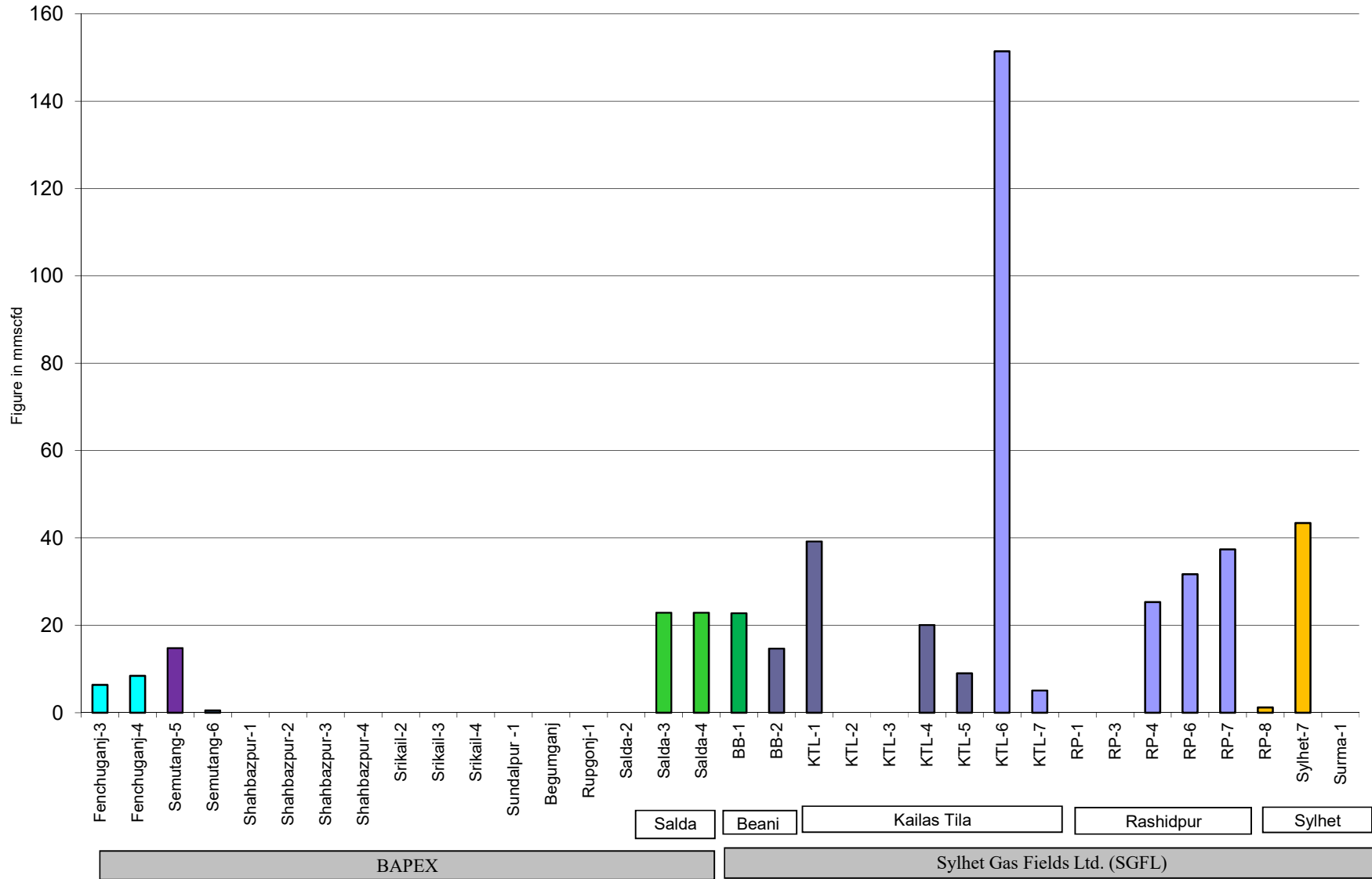
Figure in mmcf and % of total production

Wellwise Daily Avg. Production- BGFCL June 2022

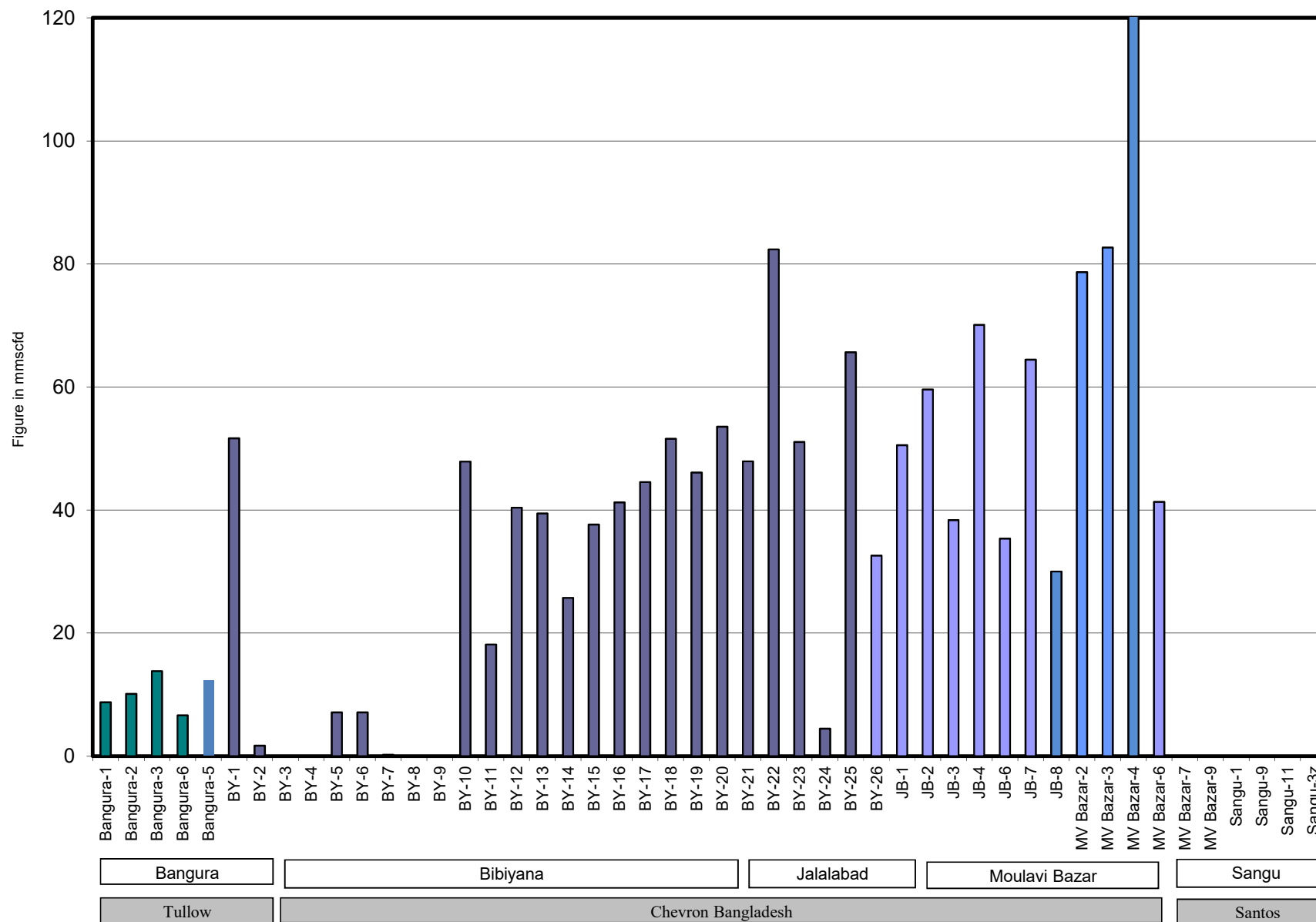


Bangladesh Gas Fields Co. Ltd. (BGFCL)

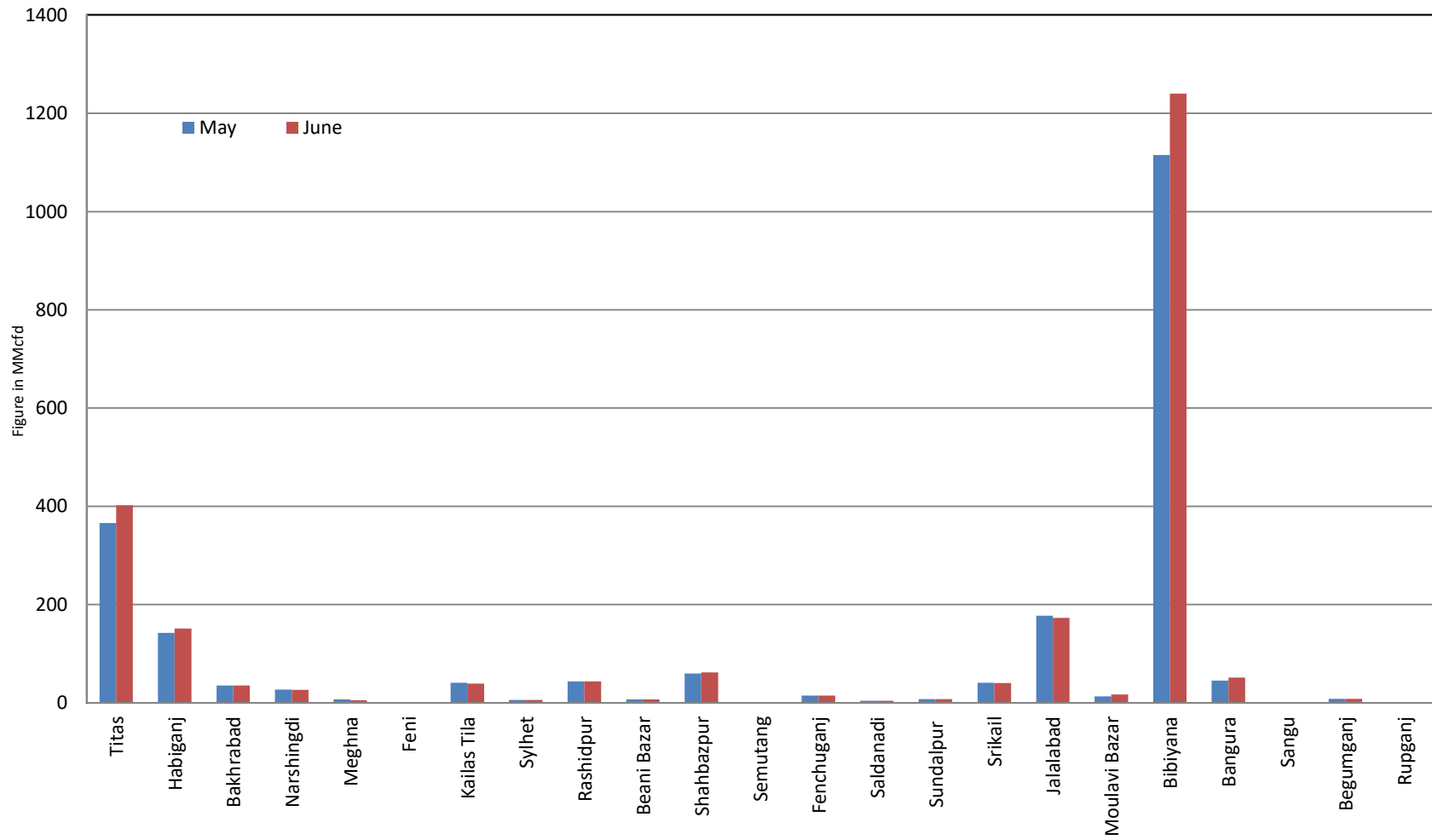
Wellwise Daily Avg. Production- Bapex and SGFL June 2022



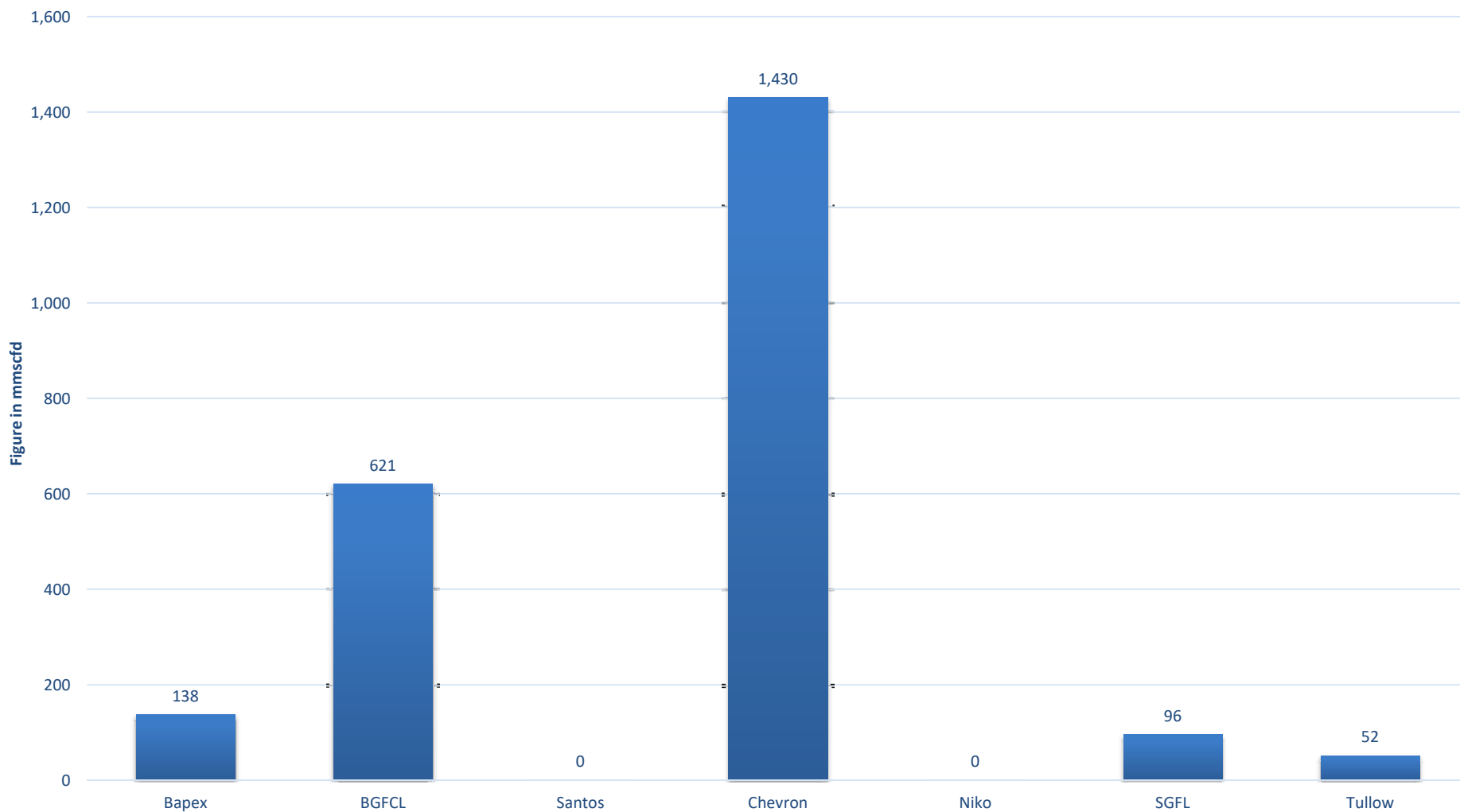
Wellwise Daily Avg. Production- IOC and JVA June 2022



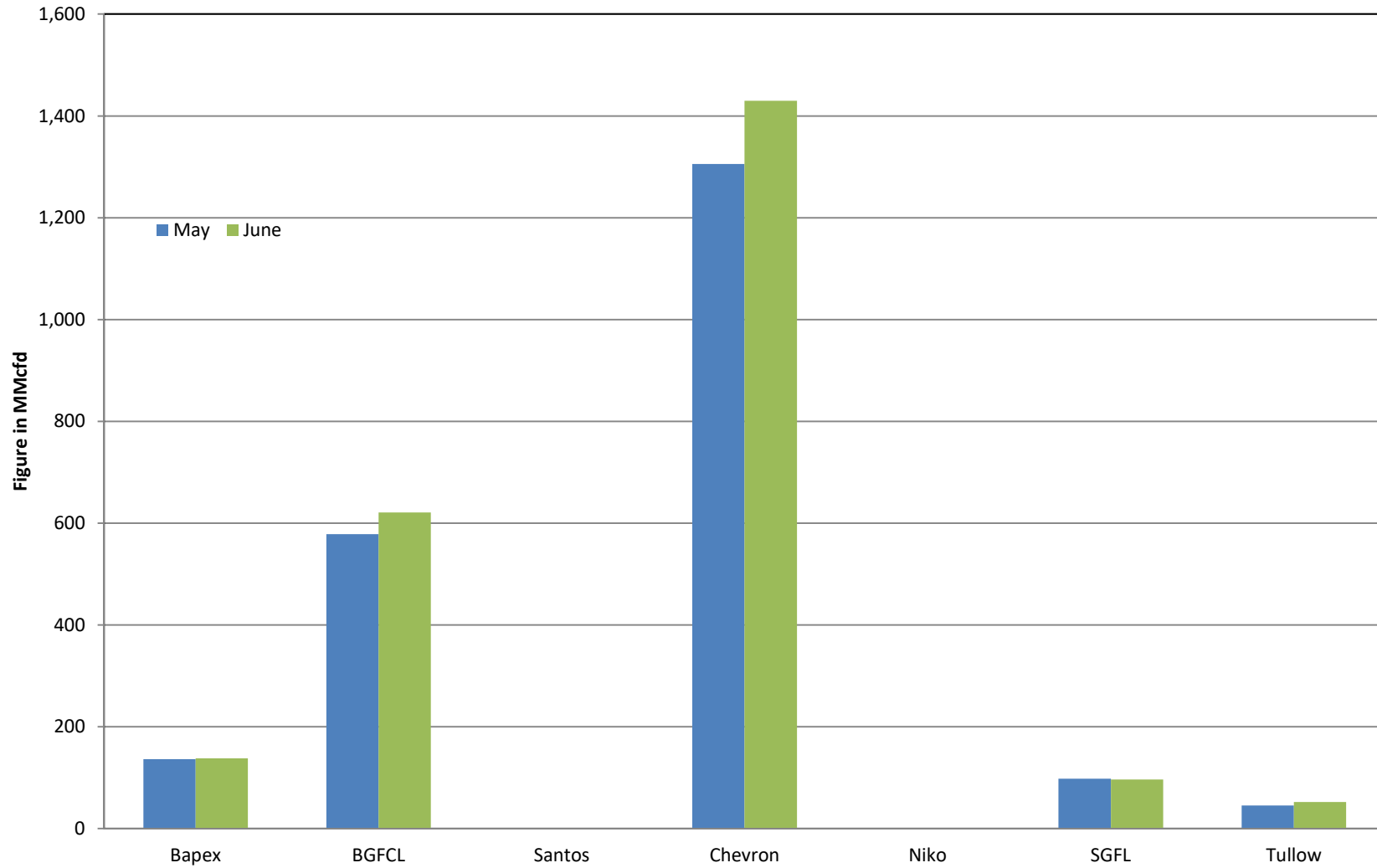
Comparison of fieldwise daily avg. Gas production between May 2022 & June 2022



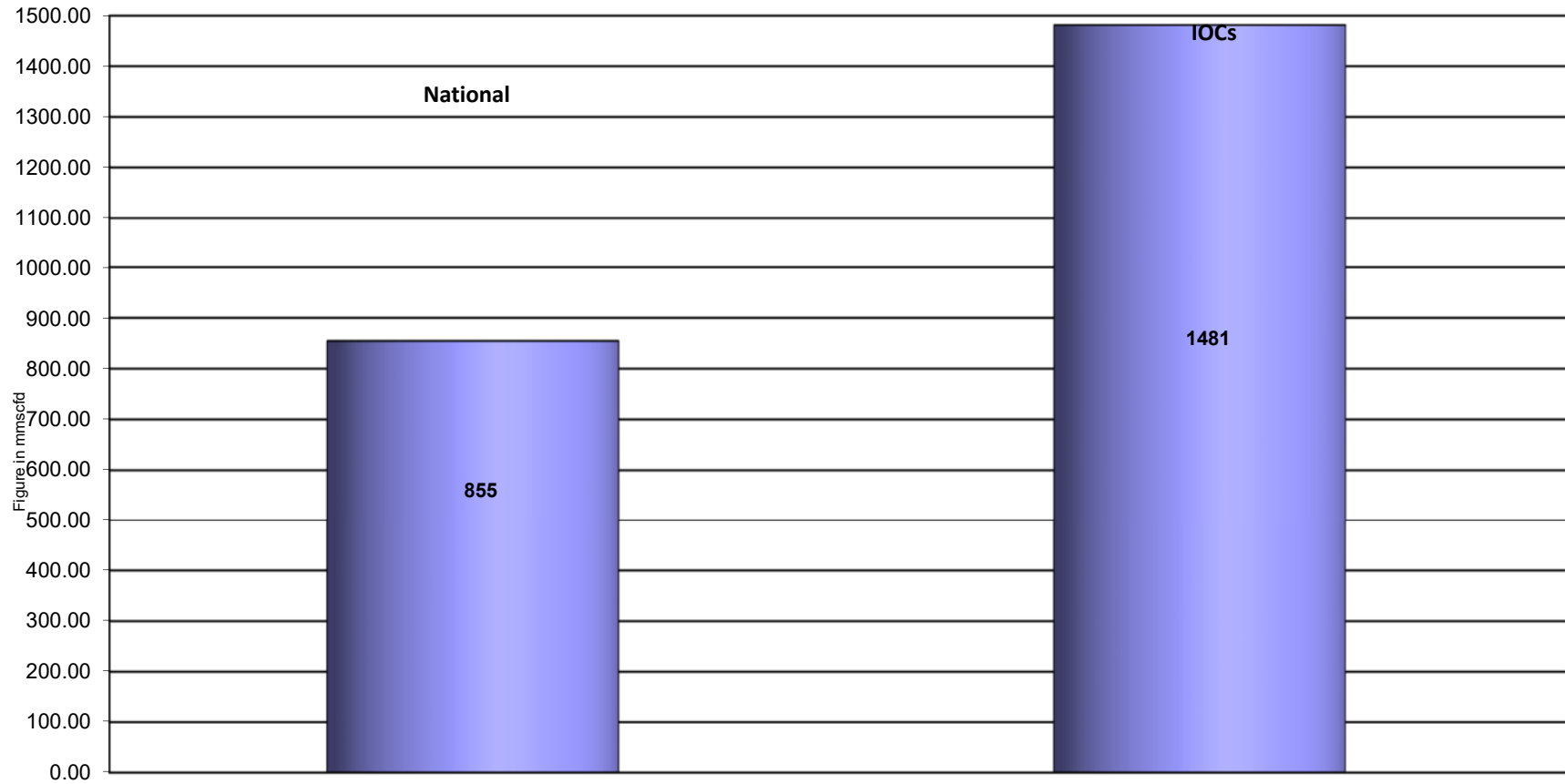
Daily Avg. Production by Operators June 2022



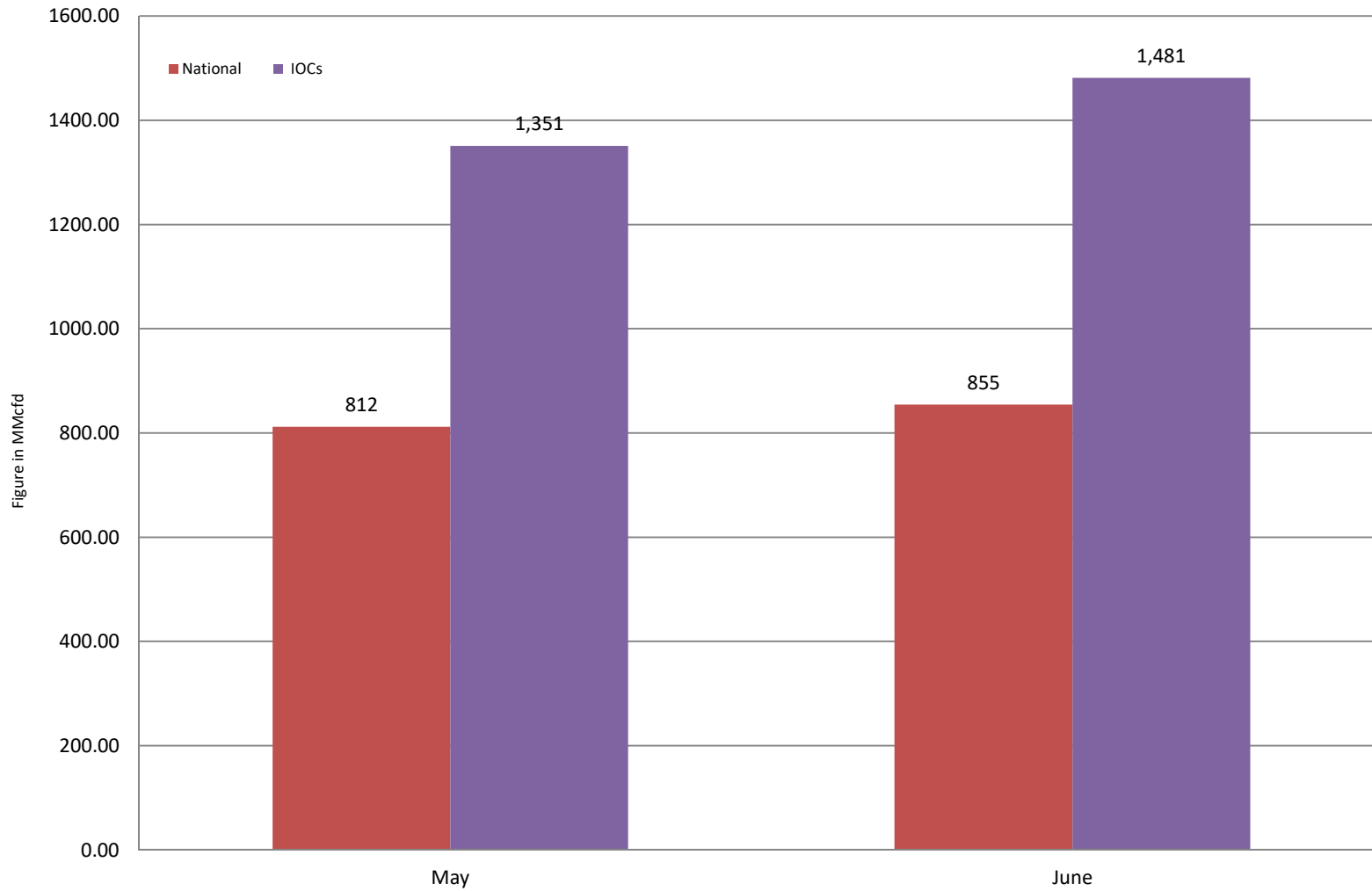
Comparison of operatorwise daily avg. Gas production between May 2022 & June 2022



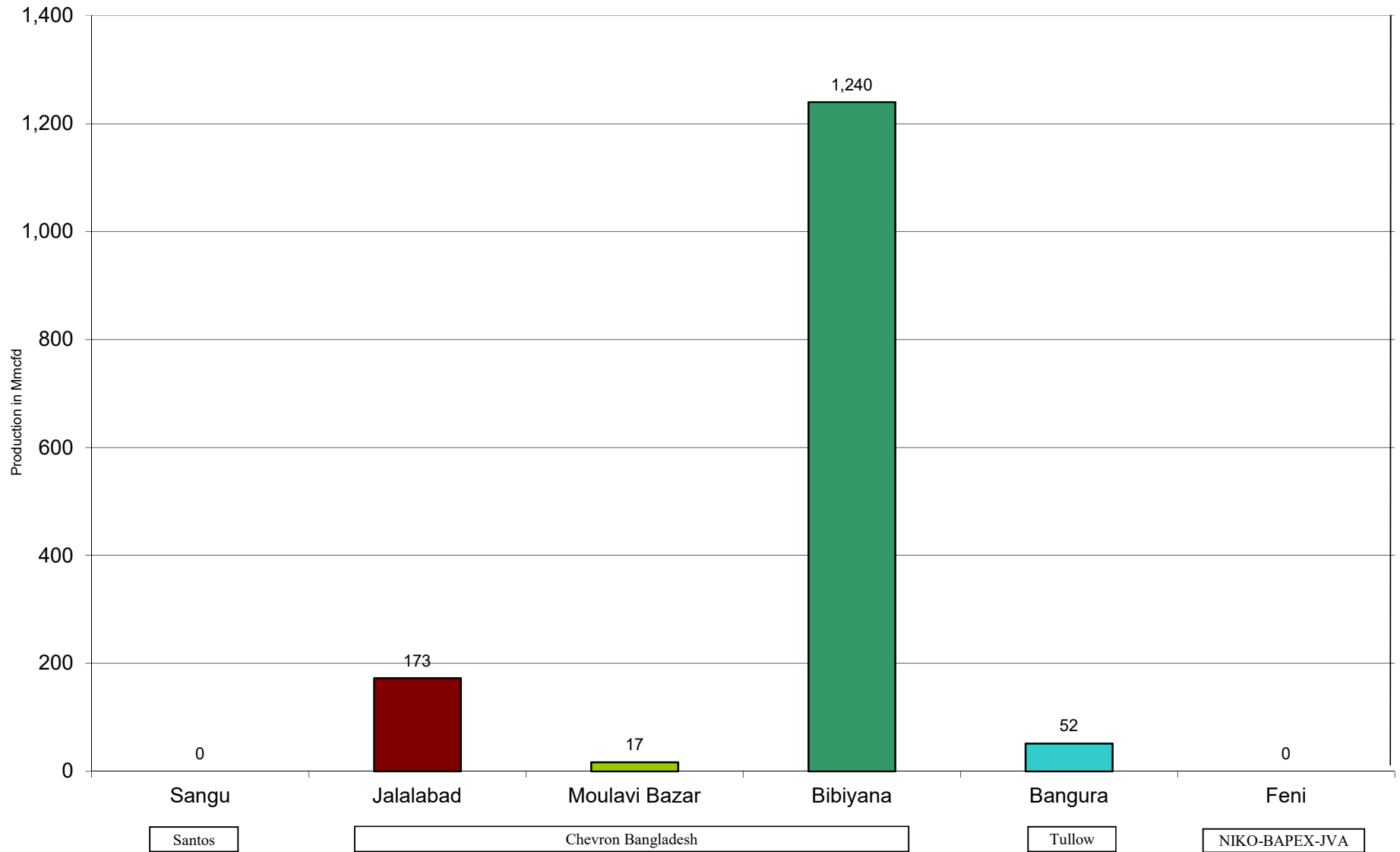
Daily Avg. Production - National Vs. IOCs June 2022



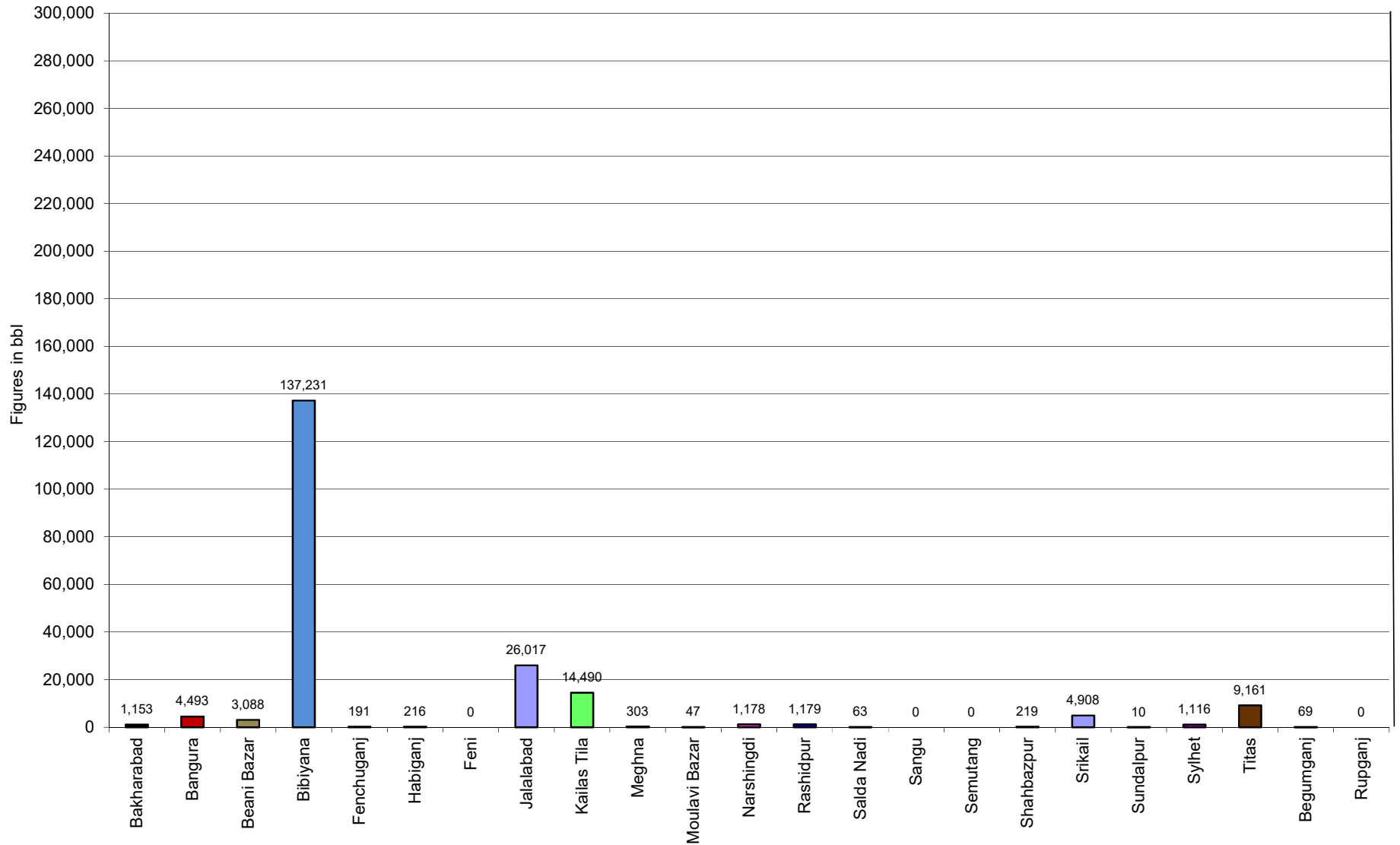
Comparison of daily avg. Gas production - National vs IOC's between May 2022 & June 2022



Daily Avg. Production - IOC and JVA June 2022



Monthly Condensate Production June 2022



Field wise Coal Reserve in Bangladesh

SI No.	Coal Basins	Proved (Mt)	Indicated (Mt)	Inferred (Mt)	Total (Mt)
1	Barapukuria	114.32	211.33	21.06+(43-64)*	346.71+(43-64)*
2	Phulbari	288	226	58	572
3	Khalashpir	-	297.57	225.92	523.49
4	Jamalganj	-	-	1053.9	1053.9
5	Dighipara	-	105	495	600
	Total	402.32	839.9	1896.88-1917.88	3139.10-3160.10

**Resources of VI Seam in second syncline are towards SW of main basin, after Wardell Armstrong*

NOTE: Reserve Figure based on Coal Sector Development Strategy (Final), HCU, PwC

Summary of Reserve and Production of Barapukuria Coal Mine As of June 2022

Coal Initially Place (Proven + Probable)	346,710 kT	346.71 MT
Total Reserve of Seam VI	285,410 kT	285.41 MT
Recoverable from Seam VI Central part(Proven + Probable)	16,540 kT*	16.54 MT
Coal Production in June 2022	5.42 kT	0.01 MT
Cumulative Production as of June 2022	12,782 kT	12.78 MT
Remaining Reserve	3,758 kT	3.76 MT

NOTE: Reserve figure based on Mines and Minerals Development Report ,HCU PwC

*Figure from BCMCL, M/S Wardell Armstrong. According to Mines and Minerals Development Report ,HCU, PwC this figure is 64.8 Mt

Barapukuria Coal Mine-MPM and P Contract (BCMCL)
Measurement Record: Surface Belt Weigher
Measurement Period: June 2022

Day wise data	Consortium Daily Output (ton)	Consortium Cumulative Total	BCMCL Daily Output	BCMCL Cumulative Total	Remarks
1-Jun-2022	0.00	0.00	0.00	0.00	
2-Jun-2022	0.00	0.00	0.00	0.00	
3-Jun-2022	536.45	536.45	536.45	536.45	
4-Jun-2022	68.04	604.49	68.04	604.49	
5-Jun-2022	380.92	985.41	380.92	985.41	
6-Jun-2022	283.99	1,269.40	283.99	1,269.40	
7-Jun-2022	99.89	1,369.29	99.89	1,369.29	
8-Jun-2022	575.91	1,945.20	575.91	1,945.20	
9-Jun-2022	56.34	2,001.54	56.34	2,001.54	
10-Jun-2022	81.05	2,082.59	81.05	2,082.59	
11-Jun-2022	490.55	2,573.14	490.55	2,573.14	
12-Jun-2022	28.81	2,601.95	28.81	2,601.95	
13-Jun-2022	683.38	3,285.33	683.38	3,285.33	
14-Jun-2022	24.97	3,310.30	24.97	3,310.30	
15-Jun-2022	549.44	3,859.74	549.44	3,859.74	
16-Jun-2022	35.02	3,894.76	35.02	3,894.76	
17-Jun-2022	591.21	4,485.97	591.21	4,485.97	
18-Jun-2022	21.86	4,507.83	21.86	4,507.83	
19-Jun-2022	599.31	5,107.14	599.31	5,107.14	
20-Jun-2022	43.10	5,150.24	43.10	5,150.24	
21-Jun-2022	664.08	5,814.32	664.08	5,814.32	
22-Jun-2022	22.34	5,836.66	22.34	5,836.66	
23-Jun-2022	584.90	6,421.56	584.90	6,421.56	
24-Jun-2022	45.13	6,466.69	45.13	6,466.69	
25-Jun-2022	758.07	7,224.76	758.07	7,224.76	
26-Jun-2022	44.51	7,269.27	44.51	7,269.27	
27-Jun-2022	198.91	7,468.18	198.91	7,468.18	
28-Jun-2022	22.38	7,490.56	22.38	7,490.56	
29-Jun-2022	0.02	7,490.58	0.02	7,490.58	
30-Jun-2022	19.32	7,509.90	19.32	7,509.90	

Adjustable coal for scale calibration	1,683.15
Total Output	5,826.75
Deduction for scrap May 22)	1.12
Less Difference in water content	403.598
Less out of seam Dilution	0.00
Net Output	5,422.03

Barapukuria Coal Mine Daywise Data Graph for June 2022

