

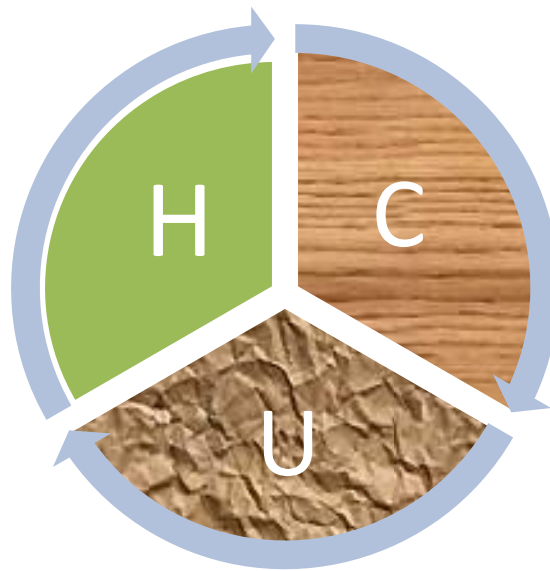


HYDROCARBON UNIT

Energy and Mineral Resources Division

Gas and Coal Reserve & Production

September 2019



Gas Reserve & Production at a glance

Gas Initially in Place (GIIP)	:	35,796.19 Bcf
Recoverable (2P)	:	28,685.40 Bcf
Cumulative Production as of September 2019	:	17,143.93 Bcf
Remaining Reserve up to September 2019	:	11,541.47Bcf
Gas Production in September 2019	:	78.40Bcf
National Oil Company (NOC's) production in September 2019	:	29.81Bcf
International Oil Company (IOC's) production in September 2019	:	48.60Bcf
No. of National Oil Company (NOC's) in September 2019	:	3 (BGFL, BAPEx, SGFL)
No. of International Oil Company (IOC's) in September 2019	:	2 (Chevron, Tullow)
Total gas fields of National Oil Company(NOC) in September 2019	:	21
Total gas fields of International Oil Company(IOC) in September 2019	:	5
Total gas wells of National Oil Company(NOC) in September 2019	:	115
Total gas wells of International Oil Company(IOC) in September 2019	:	60
No. of National Oil Company (NOC's) gas production well in September 2019	:	70
No. of International Oil Company (IOC's) gas production well in September 2019	:	42
No. of National Oil company(NOC's) suspended well in September 2019	:	45
No. of International Oil company(IOC's) suspended well in September 2019	:	18
Total LNG Import in September 2019	:	16.82Bcf
Cumulative LNG Import from September 2018	:	166.02Bcf

Executive Summary of September 2019

Total gas and condensate Production in September 2019 were 78.40 Bcf and 331247.25 Bbl. In the previous month i.e. August 2019, gas and condensate production was 74.67 Bcf and 306577.95 Bbl and in the same month of the previous year i.e. September 2018, total gas and condensate production was 82.29 Bcf and 350339.05 Bbl respectively. The National Oil Companies (NOC's) and International Oil Companies (IOC's) Produced 29.81 Bcf and 48.60 Bcf gas respectively in September 2019. During the previous month i.e. August 2019, gas production by the National Oil Companies (NOC's) and International Oil Companies (IOC's) were 29.65 Bcf and 45.02 Bcf respectively. In the month of September 2019, Bibiyana gas field Produced 38.81 Bcf gas and it ranked top among the gas producers. It is noted that Bibiyana gas field Produced 36.74 Bcf in August 2019. Average production from the field during the month of September 2019 was 1293.66 Mmcfd.

During the month of September 2019 total production of condensate was 331247.25 Bbl compared to 306577.95 Bbl in the previous month i.e. August 2019. Bibiyana gas field Produced 238521.72 Bbl condensate and ranked top while Jalalabad ranked 2nd by producing 22110.71 Bbl.

In the month of September 2019 total coal production was 80,801.46 Ton. In the previous month i.e. August 2019 total coal production was 98,956.34 Ton. It indicates that 18154.88 Ton less Coal was produced compared to previous month.

Total LNG import in September 2019 was 16.82 Bcf. As a result, cumulative LNG import stands on 166.02 Bcf since September 2018.

Table of Contents

Gas Report	Page No.
Summary	1
summary of Reserve and Production	2
Production comparison between August 2019 & September 2019	3
Production per well & production reserve ratio	4
Monthly Production by Fields & Wells up to September 2019	5-12
Monthly Condensate Production by Fields up to September 2019	13-14
Monthly Water Production by Fields from September 2019	15-16
Conditions of Field and Well up to September 2019	17-21
Chart	
Well-wise Production of All fields in 2017-18	22
Reserve, Production and Remaining Reserve as of September 2019	23
Daily Average Gas Production from January 2012 to September 2019	24
Field wise Daily Average Production as of September 2019	25
Well wise Daily Average Production-BGFCL as of September 2019	26
Well wise Daily Average Production-BAPEX and SGFL, September 2019	27
Well wise Daily Average Production-IOC and JVA, September 2019	28
Comparison of Field wise Daily Avg Gas Production between August 19 & September 19	29
Daily Average Production by Operator, September 2019	30
Comparison of Operator wise daily avg Production between August 19 & September 19	31
Daily Average Production – National vs IOC's, September 2019	32
Comparison of daily avg Gas Production- National vs IOC's between August 19 &	33
Daily Average Production IOC's and JVA, September 2019	34
Monthly Condensate Production, September 2019	35
Coal Report	
Summary	36-37
Barapukuria Coal Mine-MPM and P Contract (BCMCL)	38
Barapukuria Coal Mine Day wise Data Graph for September 2019	39

Summary of Reserve, Production & Import As of 30 September 2019

Gas Initially Place (Proven + Probable)	35,796.19 Bcf	35.80 Tcf
Recoverable (Proven + Probable)	28,685.40 Bcf	28.69 Tcf
Gas Production in September 2019	78.40 Bcf	0.08 Tcf
Cumulative Gas Production as of September 2019	17,143.93 Bcf	17.14 Tcf
Remaining Reserve	11,541.47 Bcf	11.54 Tcf

NOTE: Reserve figure based on "Updated Report on Bangladesh Gas Reserve Estimation 2010", prepared by Gustavson Associates LLC, USA

Total LNG Import in September 2019	16.82 Bcf	0.02 Tcf
Cumulative LNG Import from September 2018	166.02 Bcf	0.17 Tcf

Summary of Reserve and Production

(As of September 2019)

Gas Bcf



SI No.	Field	2P	GIIP	2P Reserve	Gas Prod. In Sept '19	Cum. Gas Production	Remaining Reserve	Cum. Condensate Production
1	Begumganj		47.0	33.0	0.2	3.1	29.9	1
2	Shahbazpur		415.0	261.0	1.8	56.1	204.9	8
3	Semutang		654.0	318.0	0.0	13.2	304.8	5
4	Fenchuganj		483.0	329.0	0.1	159.9	169.1	116
5	Salda Nadi		393.0	275.0	0.2	92.5	182.5	59
6	Srikail*		230.0	161.0	1.0	90.5	70.5	154
7	Sundalpur *		62.2	50.2	0.2	13.9	36.3	0
8	Rupganj		48.0	33.6	0.0	0.7	32.9	1
Bapex			2,332.2	1,460.8	3.5	429.9	1,030.9	344
9	Meghna		122.0	101.0	0.3	71.7	29.3	113
10	Narshingdi		405.0	345.0	0.8	206.9	138.1	428
11	Kamta		72.0	50.0	0.0	21.1	28.9	4
12	Habiganj		3,981.0	2,787.0	5.7	2,483.3	303.7	135
13	Bakhrabad		1,825.0	1,387.0	1.2	821.8	565.2	1,025
14	Titas		9,039.0	7,582.0	14.2	4,782.4	2,799.6	5,329
BGFCL			15,444.0	12,252.0	22.2	8,387.2	3,864.8	7,035
15	Sangu		976.0	771.0	0.0	489.5	281.5	37
Santos/Cairn			976.0	771.0	0.0	489.5	281.5	37
16	Bibiyana		5,321.0	4,532.0	38.8	3,936.7	595.3	23,489
17	Moulavi Bazar		630.0	494.0	0.6	326.7	167.3	118
18	Jalalabad**		1,346.0	1,346.0	6.7	1,336.4	9.6	10,371
Chevron			7,297.0	6,372.0	46.2	5,599.9	772.1	33,978
19	Feni		185.0	130.0	0.0	63.0	67.0	110
Niko			185.0	129.6		63.0	66.6	110
20	Kailas Tila		3,463.0	2,880.0	1.7	743.3	2,136.7	7,924
21	Sylhet		580.0	408.0	0.1	215.3	192.7	803
22	Rashidpur		3,887.0	3,134.0	1.4	641.1	2,492.9	788
23	Chattak		677.0	474.0	0.0	25.8	448.2	4
24	Beani Bazar		225.0	137.0	0.3	97.6	39.4	1,605
SGFL			8,832.0	7,033.0	3.5	1,723.2	5,309.8	11,124
25	Bangura		730.0	621.0	3.1	451.3	169.7	1,142
Tullow			730.0	621.0	3.1	451.3	169.7	1,142
26	Kutubdia		65.0	46.0	0.0	0.0	46.0	0
Total			35,796.2	28,685.4	78.40	17,143.9	11,541.5	53,769

* Preliminary reserve estimated by BAPEX

** 2P reserve estimation by Petrobangla has crossed the limit. So 2P reserve is estimated as GIIP reserve now.

Production comparison between August'19 & September'19



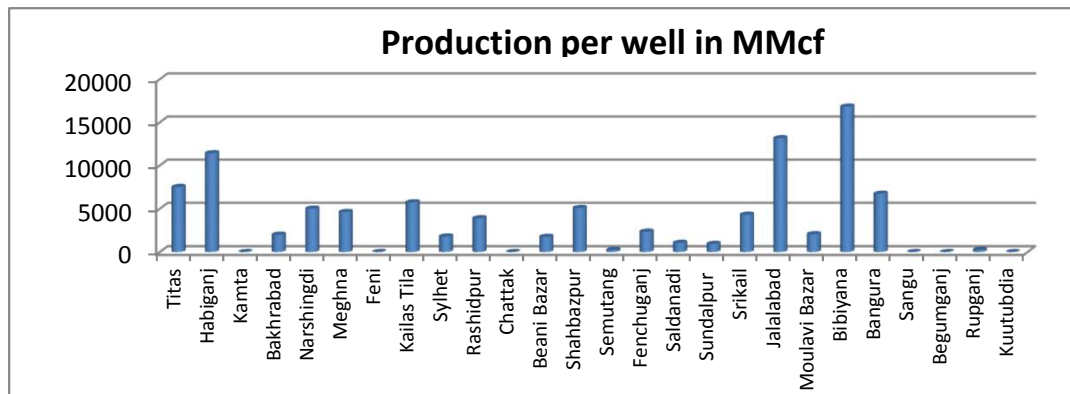
SI No.	Field	Gas Prod. (MMcf) in Aug'19	Daily Avg. (MMcfd) in Aug'19	Gas Prod. (MMcf) in Sept'19	Daily Avg. (MMcfd) in Sept'19
1	Begumganj	176	6	170	6
2	Shahbazpur	1874	60	1780	59
3	Semutang	23	1	29	1
4	Fenchuganj	142	5	124	4
5	Salda Nadi	207	7	186	6
6	Srikail	1022	33	981	33
7	Sundalpur	216	7	210	7
8	Rupganj	0	0	0	0
Bapex		3659	118	3481	116
9	Meghna	315	10	255	9
10	Narshingdi	823	27	806	27
11	Kamta	0	0	0	0
12	Habiganj	5712	184	5662	189
13	Bakhrabad	1293	42	1247	42
14	Titas	13664	441	14184	473
BGFCL		21807	703	22154	738
15	Sangu	0	0	0	0
Santos/Cairn		0	0	0	0
16	Bibiyana	36741	1185	38810	1294
17	Moulavi Bazar	487	16	624	21
18	Jalalabad	5552	179	6724	224
Chevron		42780	1380	46159	1539
19	Feni	0	0	0	0
Niko		0	0	0	0
20	Kailas Tila	1820	59	1741	58
21	Sylhet	115	4	109	4
22	Rashidpur	1499	48	1438	48
23	Chattak	0	0	0	0
24	Beani Bazar	264	9	256	9
SGFL		3699	119	3545	118
25	Bangura	2726	88	3061	102
Tullow		2726	88	3061	102
26	Kutubdia	0	0	0	0
		0	0	0	0
Total		74671	2409	78400	2613

Production per well & production reserve ratio



HYDROCARBON UNIT
Energy & Mineral Resources Division

	No of production well	Total 2p- Recoverable	2018-19 production	production per well mmcf	production reserve ratio
Titas	26	7582	183.36	7052.31	0.024
Habiganj	8	2787	79.21	9901.25	0.028
Kamta	0	50	0	0.00	0.000
Bakhrabad	7	1387	11	1571.43	0.008
Narshingdi	2	345	9.95	4975.00	0.029
Meghna	1	101	4.12	4120.00	0.041
Feni	0	130	0	0.00	0.000
Kailas Tila	4	2880	22.87	5717.50	0.008
Sylhet	1	408	1.5	1500.00	0.004
Rashidpur	5	3134	18.6	3720.00	0.006
Chattak	0	474	0	0.00	0.000
Beani Bazar	1	137	3.21	3210.00	0.023
Shahbazpur	4	261	20.35	5087.50	0.078
Semutang	2	318	0.28	140.00	0.001
Fenchuganj	2	329	3.41	1705.00	0.010
Saldanadi	2	275	1.56	780.00	0.006
Sundalpur	1	50.2	2.52	2520.00	0.050
Srikail	3	161	12.45	4150.00	0.077
Jalalabad	7	1346	84.14	12020.00	0.063
Moulavi Bazar	4	494	7.87	1967.50	0.016
Bibiyana	26	4532	463.74	17836.15	0.102
Bangura	5	621	32.89	6578.00	0.053
Sangu	0	771	0	0.00	0.000
Begumganj	1	33	1.71	0.00	0.052
Rupganj	0	33.6	0	0.00	0.000
Kuutubdia	0	46	0	0.00	0.000
Total	112	28685.8	964.74	8613.75	0.034



Monthly Production by Field and Well upto September- 2019



HYDROCARBON UNIT

Energy & Mineral Resources Division

Figures in mmscf

Well	Jan	Feb	Mar	Apr	May	Jun	Jul	Aug	Sep	Oct	Nov	Dec	Total	Cumulative	2018	2017	2016	Cumulative 2018
Field : Bakharabad																		
BKB-1	0	0	0	0	243	448	461	434	421				2,007	143,173	0	0	0	141,167
BKB-2	34	32	37	36	38	34	29	30	28				297	86,868	445	543	731	86570.8041
BKB-3	154	151	154	152	149	142	151	148	136				1,338	162,183	1,989	2,249	2,223	160,845
BKB-4	0	0	0	0	0	0	0	0	0				0	55,872				55872
BKB-5	155	140	154	146	141	140	145	151	144				1,316	60,127	1,822	1,847	1,814	58811.2039
BKB-6	0	0	0	0	0	0	0	0	0				0	50,069	0			50069
BKB-7	0	0	0		0	0	0	0	0				0	107,750	0	0	0	107,750
BKB-8	158	170	214	230	214	206	237	231	223				1,882	128,143	2,017	3,462	4,142	126,261
BKB-9	251	229	248	242	215	170	189	207	204				1,956	23,078	3,332	3,637	4,160	21,122
BKB-10	98	84	91	89	94	90	93	93	90				822	4,495	1,297	1,453	924	3,674
Field Total:	852	807	898	894	1,094	1,229	1304	1,293	1,247	0	0	0	9,618	821,759	10,903	13,190	13,070	812,141
Daily Avg.(mmscfd)	27	29	29	30	35	41	42	42	42	0	0	0	35		30	36	36	
Field : Bangura																		
Bangura-1	384	343	377	363	368	354	347	300	321				3,158	92,412	4,615	4,914	4,886	89,254
Bangura-2	504	437	472	469	458	442	451	389	415				4,037	83,575	6,802	7,837	9,200	79,538
Bangura-3	601	516	563	544	544	470	542	424	498				4,702	101,429	7,265	8,662	10,038	96,727
Bangura-6	343	306	319	320	312	268	311	243	286				2,709	11,656	4,847	4,100		8,947
Bangura-5	1,212	1,087	1,200	1,153	1,182	1,197	1,540	1,370	1,541				11,481	162,223	8,410	9,699	11,514	150,743
Field Total:	3,044	2,690	2,931	2,848	2,864	2,732	3191	2,726	3,061	0	0	0	26,087	451,296	31,940	35,212	35,639	425,208
Daily Avg.(mmscfd)	98	96	95	95	92	91	103	88	102	0	0	0	96		88	96	98	
Field : Beani Bazar																		
BB-1	0	0	0	0	0	0	0	0	0	0	0	0	0	35,481	0	1,023	33	35481
BB-2	274	239	266	256	269	259	266	264	256				2,350	62,086	3,276	3,282	3,431	59736
Field Total:	274	239	266	256	269	259	266	264	256	0	0	0	2,350	97,567	3,276	4,306	3,464	95217
Daily Avg.(mmscfd)	9	9	9	9	9	9	9	9	9	0	0	0	9		9	12	9	
Field : Bibiyana																		
BY-1	2,554	2,149	2,272	2493	2,668	1,827	2452	2,164	2,653				21,231	389,116	21,743	35,595	35,050	367885
BY-2	1,632	1,327	1,573	1544	1,560	1,363	1451	1,251	1,402				13,104	287,531	21,388	23,957	20	274427
BY-3	737	608	567	549	526	519	218	4	4				3,732	239,001	6,249	9,904	16,873	235269
BY-4	1,865	1,587	1,790	1921	2,125	1,896	2227	1,965	2,257				17,633	198,171	28,559	6,571	7,322	180538
BY-5	762	698	718	297	668	527	514	434	616				5,235	177,202	6,131	8,117	9,229	171967
BY-6	792	617	771	809	937	623	736	733	809				6,825	228,321	11,057	11,879	15,208	221496
BY-7	2,548	2,171	2,391	2190	2,322	1,904	2325	1,988	2,182				20,021	264,605	23,155	32,874	33,040	244583
BY-8	768	713	753	777	761	802	815	840	776				7,006	141,249	8,921	12,486	2,987	134243
BY-9	553	482	359	476	484	488	454	484	472				4,252	128,869	4,093	6,247	6,820	124617

Monthly Production by Field and Well upto September- 2019



HYDROCARBON UNIT
Energy & Mineral Resources Division

Figures in mmscf

Well	Jan	Feb	Mar	Apr	May	Jun	Jul	Aug	Sep	Oct	Nov	Dec	Total	Cumulative	2018	2017	2016	Cumulative 2018		
BY-10	2,106	1,752	2,357	2244	2,233	1,901	2227	2,100	2,104				19,023	354,021	30,954	32,967	33,582	334997		
BY-11	797	626	657	818	861	727	836	678	868				6,867	126,828	12,147	6,813	9,357	119961		
BY-12	2,162	2,177	2,205	2245	2,280	2,173	2333	2,358	2,223				20,156	142,859	6,835	8,284	10,574	122703		
BY-13	959	569	880	798	950	905	963	883	902				7,809	80,768	13,171	11,842	15,603	72959		
BY-14	800	730	845	666	777	660	721	670	747				6,615	97,228	11,523	15,354	15,170	90613		
BY-15	1,829	1,420	1,646	1693	2,124	1,806	2051	1,817	1,767				16,153	113,074	24,295	19,111	17,698	96921		
BY-16	908	823	806	741	807	792	877	896	831				7,482	68,554	9,264	12,541	15,844	61072		
BY-17	1,794	1,176	1,440	1496	1,576	1,726	1770	1,265	1,477				13,719	91,590	17,603	15,412	15,463	77871		
BY-18	2,784	2,387	2,668	2541	2,546	2,204	2489	2,494	2,351				22,466	140,268	31,890	29,509	33,072	117802		
BY-19	1,761	2,275	2,368	2362	2,407	2,003	2354	2,359	2,173				20,062	52,140	8,144	9,859	9,383	32078		
BY-20	1,636	2,008	2,113	2176	1,384	1,106	1748	1,818	2,000				15,991	53,836	7,840	6,533	9,282	37845		
BY-21	634	531	656	671	719	649	723	577	716				5,875	41,099	9,670	13,246	8,533	35224		
BY-22	1,742	1,310	1,480	1517	1,833	1,403	1736	1,629	1,664				14,315	122,114	24,755	27,093	33,387	107799		
BY-23	2,261	1,781	2,212	2100	2,190	1,731	2144	2,025	2,210				18,654	70,701	32,043	15,333	4,405	52047		
BY-24	870	712	824	826	830	850	833	787	885				7,418	65,582	13,268	13,484	15,265	58164		
BY-25	2,070	2,145	2,340	2229	2,396	1,836	2308	2,152	2,251				19,727	124,907	28,306	30,331	33,282	105180		
BY-26	2,683	2,344	2,465	2318	2,524	1,885	2467	2,370	2,471				21,526	137,091	33,853	30,446	33,167	115565		
Field Total:	40006	35117	39154	38499	40489	34306	39773	36741	38810	0	0	0	342,896	3,936,725	446,855	445,787	439,615	3593828		
Daily Avg.(mmscfd)	1291	1254	1263	1283	1306	1144	1283	1,185	1,294	0	0	0	1,256		1,224	1,221	1,204			
Field : Chattak																				
Ch-1	Production Suspended													25,834				25834		
Field Total:	0													25,834				25834		
Daily Avg.(mmscfd)	0													0				0		
Field : Fenchuganj																				
Fenchuganj-2	0	0	0	0	0	0	0	0	0				0	38,169	0	0	0	38168.5464		
Fenchuganj-3	274	203	225	217	145	129	174	121	103				1,591	92,229	3,186	6,192	7,606	90,638		
Fenchuganj-4	60	30	30	28	27	25	27	21	22				270	29,544	809	441	3,189	29,274		
Field Total:	334	234	255	245	172	154	201	142	124	0	0	0	1,860	159,941	3,994	6,633	10,795	158080.237		
Daily Avg.(mmscfd)	11	8	8	8	6	5	6	5	4	0	0	0	7		11	18	30			
Field : Feni																				
Feni-1	Production Suspended													0	0	34,214				34214
Feni-2	Production Suspended													0	0	6,119				6119
Feni-3	Production Suspended													0	0	2,176				2176

Monthly Production by Field and Well upto September- 2019



HYDROCARBON UNIT
Energy & Mineral Resources Division

Figures in mmscf

Well	Jan	Feb	Mar	Apr	May	Jun	Jul	Aug	Sep	Oct	Nov	Dec	Total	Cumulative	2018	2017	2016	Cumulative 2018
Feni-4	Production Suspended									0				14,386				14,386
Feni-5	Production Suspended									0				6,127				6,127
Field Total:													63,023					63022.613
Daily Avg.(mmscfd)																		
Field : Habiganj																		
Hbj-1	429	375	414	379	369	331	338	311	289				3,234	281,342	2,207	0	0	278,108
Hbj-2	0	0	0	0	0	0	0	0	0				0	275,704	0	0	0	275,704
Hbj-3	1,105	952	986	925	954	861	890	850	840				8,364	385,522	13,155	13,151	13,227	377,157
Hbj-4	1,105	952	986	925	954	861	890	850	840				8,364	379,980	13,155	13,151	13,227	371,615
Hbj-5	798	711	776	746	770	725	767	732	724				6,750	304,424	9,497	9,497	9,552	297,674
Hbj-6	461	413	459	447	461	435	460	440	435				4,012	166,221	5,487	5,491	5,523	162,209
Hbj-7	1,211	1,090	1,233	1,191	1,228	1,160	1,197	1,176	1,178				10,665	263,784	14,533	14,565	14,685	253,119
Hbj-8	0	0	0	0	0	0	0	0	0				0	11,023	0	0	0	11023
Hbj-9	0	0	0	0	0	0	0	0	0				0	52,652	0	0	0	52,652
Hbj-10	969	870	925.3	893	921	833	838	823	825				7,898	261,031	13,928	14,058	14,629	253,133
Hbj-11	697	623	619.3	598	617	544	539	529	530				5,297	101,605	9,579	10,398	11,247	96,308
Field Total:	6,776	5,985	6,400	6,104	6,276	5,750	5920	5,712	5,662	0	0	0	54,585	2,483,286	81,540	80,313	82,091	2,428,701
Daily Avg.(mmscfd)	219	214	206	203	202	192	191	184	189	0	0	0	200		223	220	225	
Field : Jalalabad																		
JB-1	877	733	790	761	813	703	786	670	788				6,920	252,689	10,469	9,142	11,951	245769.25
JB-2	1,088	910	978	934	1,001	876	975	832	978				8,573	288,169	12,973	14,517	17,057	279595.683
JB-3	1,451	1,214	1,313	1,277	1,344	1,177	1,300	1,120	1,304				11,499	352,024	17,399	19,162	21,086	340524.337
JB-4	453	379	410	399	419	368	406	345	408				3,588	282,588	5,821	7,045	8,313	279000.069
JB-6	1,451	1,114	1,313	1,277	1,332	1,163	1,297	1,010	1,304				11,261	70,586	17,364	19,524	19,136	59324.882
JB-7	1,088	910	985	955	1,014	882	973	793	978				8,578	37,968	13,053	10,324	5,254	29389.947
JB-8	1,073	898	971	943	1,000	860	959	782	965				8,449	52,379	12,793	14,513	16,252	43930.014
Field Total:	7,482	6,158	6,760	6,546	6,922	6,029	6695	5,552	6,724	0	0	0	58,869	1,336,403	89,872	94,226	99,048	1277534.182
Daily Avg.(mmscfd)	241	220	218	218	223	201	216	179	224	0	0	0	216		246	258	271	
Field : Kailas Tila																		
KTL-1	147	109	114	0	0	0	0	0	0				371	205,181	462	0	0	204809.47

Monthly Production by Field and Well upto September- 2019



HYDROCARBON UNIT

Energy & Mineral Resources Division

Figures in mmscf

Well	Jan	Feb	Mar	Apr	May	Jun	Jul	Aug	Sep	Oct	Nov	Dec	Total	Cumulative	2018	2017	2016	Cumulative 2018
KTL-2	612	551	610	585	607	590	611	610	592				5,367	183,514	7,190	7,242	7,282	178146.7467
KTL-3	235	209	228	221	226	219	226	226	218				2,008	139,828	2,947	3,255	5,003	137819.8563
KTL-4	253	228	254	242	238	229	229	217	186				2,077	98,172	3,336	3,680	3,499	96095.43219
KTL-5	0	0	0	0	0	0	0	0	0				0	17,923	0	0	0	17923
KTL-6	770	689	765	731	774	744	774	768	746				6,761	97,849	8,950	9,086	8,975	91088.59184
KTL-7	0	0	0	0	0	0	0	0	0				0	816	0	0	329	815.6361511
Field Total:	2,017	1,787	1,971	1,779	1,846	1,783	1,841	1,820	1,741	0	0	0	16,584	743,283	22,886	23,263	25,088	726698.7332
Daily Avg.(mmscfd)	65	64	64	59	60	59	59	59	58	0	0	0	61		63	64	69	
Field : Kamta																		
Kamta-1	Production Suspended													21,139			21139	
Field Total:			0	0	0	0	0	0	0					21,139				21139
Daily Avg.(mmscfd)																		
Field : Meghna																		
M-1	372	308	314	302	293	272	257	315	255				2,689	71,663	4,538	4,625	4,425	68973.5373
Field Total:	372	308	314	302	293	272	257	315	255	0	0	0	2,689	71,663	4,538	4,625	4,425	68973.5373
Daily Avg.(mmscfd)	12	11	10	10	9	9	8	10	9	0	0	0	10		12	13	12	
Field : Moulavi Bazar																		
MV Bazar-2	121	79	72	62	58	29	23	67	81				592	54,630	2,302	2,866	3,201	54,038
MV Bazar-3	207	149	124	113	173	92	75	204	245				1,383	159,191	3,712	4,705	5,394	157808.66
MV Bazar-4	159	102	67	60	54	26	83	109	117				776	58,843	3,103	3,945	4,141	58067.249
MV Bazar-5	0	0	0	0	0	0	0	0	0					66				66
MV Bazar-6	193	182	132	183	237	154	301	107	180				1,671	18,019	1,734	1,676	1,737	16348.576
MV Bazar-7	1	1	0	0	0	0	0	0	1				4	5,648	21	152	123	5643.781
MV Bazar-9	0	0	0	0	0	0	0	0	0				1	30,336	1	0	41	30335.407
Field Total:	682	511	396	418	523	301	483	487	624	0	0	0	4,426	326,734	10,872	13,345	14,638	322,308
Daily Avg.(mmscfd)	22	18	13	14	17	10	16	16	21	0	0	0	16		30	37	40	
Field : Narshingdi																		
N-1	530	479	530	535	566	478	58	504	502				4,180	148,775	6,181	6,279	6,242	144594.559
N-2	314	278	313	317	319	303	318	319	305				2,786	58,156	3,705	3,962	4,122	55369.7587
Field Total:	844	757	843	852	885	780	376	823	806	0	0	0	6,967	206,931	9,886	10,241	10,364	199964.3177

Monthly Production by Field and Well upto September- 2019



HYDROCARBON UNIT

Energy & Mineral Resources Division

Figures in mmscf

Well	Jan	Feb	Mar	Apr	May	Jun	Jul	Aug	Sep	Oct	Nov	Dec	Total	Cumulative	2018	2017	2016	Cumulative 2018
Daily Avg.(mmscfd)	27	27	27	28	29	26	12	27	27	0	0	0	26		27	28	28	
Field :	Rashidpur																	
RP-1	542	491	530	513	537	513	536	539	513				4,714	171,777	6,505	6,625	6,639	167062.5729
RP-2	0	0	0	0	0	0	0	0	0				0	82,474				82474
RP-3	300	271	300	286	294	283	292	292	277				2,594	133,803	3,541	3,730	3,877	131208.35
RP-4	267	239	262	243	237	223	231	234	231				2,169	130,064	3,227	3,516	3,675	127895.31
RP-5	0	0	0	0	0	0	0	0	0				0	25,647				25647
RP-6	0	0	0	0	0	0	0	0	0				0	9,983	0	0	0	9983
RP-7	173	155	163	149	143	138	142	144	144				1,351	65,676	2,096	2,225	2,355	64325.3921
RP-8	314	284	314	300	306	296	300	290	273				2,677	21,710	3,696	3,977	4,422	19032.8637
Field Total:	1,597	1,439	1,569	1,491	1,517	1,454	1501	1,499	1,438	0	0	0	13,506	641,134	19,065	20,074	20,969	627628.4887
Daily Avg.(mmscfd)	52	51	51	50	49	48	48	48	48	0	0	0	49		52	55	57	
Field :	Salda Nadi																	
Salda-1	0	0	0	0	0	0	0	0	0				0	36,904	0	0	0	36903.866
Salda-2	0	0	0	0	0	0	0	0	0				0	28,495	0	0	0	28495.0617
Salda-3	123	119	135	130	125	120	192	207	186				1,337	26,918	1,067	1,514	2,350	25580.4764
Salda-4	4	5	5	6	4	4	2	0	0				29	146	70	14	34	116.899
Field Total:	127	124	140	136	128	123	194	207	186	0	0	0	1,366	92,463	1,137	1,527	2,383	91096.3031
Daily Avg.(mmscfd)	4	4	5	5	4	4	6	7	6	0	0	0	5		3	4	7	
Field :	Sangu																	
Sangu-1	0	0	0	0	0	0	0	0	0	0	0	0	0	116,191	0	0	0	116191.04
Sangu-3z	0	0	0	0	0	0	0	0	0	0	0	0	0	131,796	0	0	0	131796.06
Sangu-4	Production Suspended							0	0	0	0	0	0	87,280				87279.9
Sangu-5	Production Suspended							0	0	0	0	0	0	61,674				61674
Sangu-7	Production Suspended							0	0	0	0	0	0	18,202				18201.7567
Sangu-8	Production Suspended							0	0	0	0	0	0	37,619				37619.2233
Sangu-9	0	0	0	0	0	0	0	0	0	0	0	0	0	30,638	0	0	0	30638.2233
Sangu-10	Production Suspended							0	0	0	0	0	0					
Sangu-11	0	0	0	0	0	0		0	0	0	0	0	0	6,067	0	0	0	6066.805
Field Total:	0	0	0	0	0	0	0	0	0	0	0	0	0	489,467	0	0	0	489467.0083

Monthly Production by Field and Well upto September- 2019



HYDROCARBON UNIT

Energy & Mineral Resources Division

Figures in mmscf

Well	Jan	Feb	Mar	Apr	May	Jun	Jul	Aug	Sep	Oct	Nov	Dec	Total	Cumulative	2018	2017	2016	Cumulative 2018
Daily Avg.(mmscfd)	0	0	0	0	0	0	0	0	0	0	0	0	0		0	0	0	
Field : Semutang																		
Semutang-5	14	12	12	10	9	8	9	11	15				101	12,166	291	471	946	12,065
Semutang-6	7	11	14	14	14	14	14	12	14				114	1,069	84	66	0	956
Field Total:	22	23	27	24	23	22	23	23	29	0	0	0	214	13,235	375	537	946	13,021
Daily Avg.(mmscfd)	1	1	1	1	1	1	1	1	1	0	0	0	1		1	1	3	
Field : Shahbazpur																		
Shahbazpur-1	0	0	0	0	35	265	66	146	0				513	21,871	134	4,835	3,623	21358
Shahbazpur-2	534	523	637	656	678	531	596	685	614				5,453	16,535	6,650	4,243	189	11082
Shahbazpur-3	377	436	505	510	536	585	619	629	597				4,794		5,222	1,162	3,116	12326
Shahbazpur-4	513	452	567	632	608	481	407	414	569				4,641	17,645	6,936	1,801	1,091	13003
Field Total:	1,424	1,411	1,709	1,797	1,857	1,862	1,687	1,874	1,780	0	0	0	15,401	56,051	18,943	12,041	8,019	57770
Daily Avg.(mmscfd)	46	50	55	60	60	62	54	60	59	0	0	0	56		52	33	22	
Field : Srikail																		
Srikail-2	442	417	461	443	452	432	446	451	428				3,972	41,916	5,154	5,384	6,064	37944
Srikail-3	358	333	363	337	337	322	333	329	315				3,025	37,857	4,273	4,944	6,607	34832
Srikail-4	276	256	277	272	261	248	254	242	238				2,323	10,768	2,971	3,439	2,035	8445
Field Total:	1,076	1,005	1,102	1,052	1,050	1,001	1,032	1,022	981	0	0	0	9,321	90,541	12,398	13,767	14,707	81221
Daily Avg.(mmscfd)	35	36	36	35	34	33	33	33	33	0	0	0	34		34	38	40	
Field : Sundalpur																		
Sundalpur -1	0	0	0		0	0	0	0	0				0	9,809	0	0	552	9809.0006
Sundalpur -2	220	200	220	212	218	207	218	216	210				1,921	4,097	2,176	0	0	2176.03
Field Total:	220	200	220	212	218	207	218	216	210	0	0	0	1,921	13,906	2,176	0	552	11985.0306
Daily Avg.(mmscfd)	7	7	7	7	7	7	7	7	7	0	0	0	7		6	0	2	
Field : Sylhet																		
Sylhet-3	Production Suspended													89,032				89032
Sylhet-6	Production Suspended													91,748				91747.53593
Sylhet-7	131	108	118	113	117	111	115	115	109				1,037	28,028	1,622	2,061	2,212	26990.41911
Surma-1	0	0	0	0	0	0	0	0	0				0	6,528	0	249	720	6528.401488

Monthly Production by Field and Well upto September- 2019



HYDROCARBON UNIT
Energy & Mineral Resources Division

Figures in mmscf

Well	Jan	Feb	Mar	Apr	May	Jun	Jul	Aug	Sep	Oct	Nov	Dec	Total	Cumulative	2018	2017	2016	Cumulative 2018
Field Total:	131	108	118	113	117	111	115	115	109	0	0	0	1,037	215,335	1,622	2,309	2,932	214,298
Daily Avg.(mmscfd)	4	4	4	4	4	4	4	4	4	0	0	0	4		4	6	8	
Field :	Titas																	
Titas-1	675	537	559	566	571	521	556	533	538				5,056	444,685	8,516	7,897	9,999	439628.9693
Titas-2	962	865	939	906	968	903	918	842	895				8,196	443,701	11,522	11,506	11,474	435504.9345
Titas-3	0	0	0	0	0	0	0	0	0	0	0	0	0	314,888	0			314887.6245
Titas-4	994	861	960	923	972	900	937	844	911				8,303	378,754	11,726	11,798	12,782	370451.2679
Titas-5	1,020	899	997	968	1,015	975	1030	907	962				8,773	437,025	11,838	11,869	10,692	428251.9951
Titas-6	978	878	958	964	142	739	834	765	825				7,082	370,210	12,030	12,029	12,809	363128.3487
Titas-7	947	824	977	891	948	740	862	708	832				7,729	352,593	11,919	11,707	12,125	344864.483
Titas-8	510	426	498	497	567	433	493	461	507				4,392	277,028	6,154	6,889	7,046	272635.682
Titas-9	539	475	517	518	583	548	570	572	574				4,896	281,386	6,706	8,246	8,467	276489.3617
Titas-10	647	565	636	619	702	671	716	616	676				5,847	204,848	7,612	7,431	4,350	199001.0135
Titas-11	855	762	867	830	858	282	514	524	841				6,333	253,234	9,998	10,276	9,075	246900.6508
Titas-12	482	422	483	463	476	305	415	340	463				3,848	104,624	5,160	5,168	5,326	100775.0616
Titas-13	580	513	576	552	567	501	525	555	80				4,449	194,541	6,952	7,879	9,553	190092.1973
Titas-14	576	498	566	536	552	412	433	429	514				4,514	154,500	7,203	8,309	8,888	149985.7106
Titas-15	460	412	434	405	420	402	416	417	405				3,770	143,284	5,543	7,973	11,777	139513.7078
Titas-16	669	592	646	612	635	569	601	586	564				5,474	151,820	8,605	10,060	11,333	146345.658
Titas-17	515	431	507	475	514	443	508	465	488				4,346	43,849	6,335	7,011	7,359	39502.59074
Titas-18	546	458	535	504	540	464	537	489	518				4,590	42,596	6,664	7,168	7,338	38005.80988
Titas-19	507	450	489	458	471	441	471	470	458				4,216	32,265	6,115	6,106	6,253	28048.75173
Titas-20	305	277	310	294	306	292	292	298	298				2,672	21,500	3,914	3,635	3,645	18827.65405
Titas-21	253	232	258	249	263	250	256	260	255				2,276	11,508	2,995	2,800	1,572	9231.92508
Titas-22	309	284	296	231	269	265	275	264	249				2,442	26,859	4,158	4,336	5,497	24417.72136
Titas-27	487	404	478	455	479	418	496	485	458				4,160	32,999	5,827	6,136	6,233	28839.08566
Titas-23	483	436	489	477	496	459	474	192	184				3,690	13,695	5,594	4,410		10004.90412
Titas-24	202	185	207	196	195	188	204	449	452				2,277	7,269	2,709	2,283		4991.903932
Titas-25	528	476	528	508	519	472	500	740	756				5,028	17,243	6,324	5,622	269	12214.74275
Titas-26	809	733	801	731	783	702	769	453	481				6,263	25,528	9,672	9,210	383	19265.35388
Field Total:	15,838	13,893	15,509	14,828	14,810	13,294	14604	13,664	14,184	0	0	0	130,624	4,782,431	191,792	197,756	184,246	4651807.11
Daily Avg.(mmscfd)	511	496	500	494	478	443	471	441	473	0	0	0	478		525	542	505	

Monthly Production by Field and Well upto September- 2019



HYDROCARBON UNIT
Energy & Mineral Resources Division

Figures in mmscf

Well	Jan	Feb	Mar	Apr	May	Jun	Jul	Aug	Sep	Oct	Nov	Dec	Total	Cumulative	2018	2017	2016	Cumulative 2018
Field : Begumganj																		
Begumganj-3	176	179	200	197	194	170	177	176	170				1,638	3,108	593	0	85	1,470
Field Total:	176	179	200	197	194	170	177	176	170	0	0	0	1,638	3,108	593	0	85	1,470
Daily Avg.(mmscfd)	6	6	6	7	6	6	6	6	6	0	0	0	6		2	0	0	
Field : Rupganj																		
Rupganj-1	0	0	0										0	679	0	679		679
Field Total:	0	0	0	0	0	0	0	0	0	0	0	0	0	679	0	679		679
Daily Avg.(mmscfd)	0	0	0	0	0	0	0	0	0	0	0	0	0		0	2		
Grand Total (in Bcf)	83.29	72.98	80.78	78.59	81.55	71.84	80	74.67	78.40	0.00	0.00	0.00	702.0	17,143.93	964.7	979.8	973.1	16,459
Daily Avg.(mmscfd)	2,687	2,606	2,606	2,620	2,631	2,395	2576	2,409	2,613	0	0	0	2,571		2,643	2,684	2,666	

Monthly Condensate Production by Fields upto September 2019



Field Name	Jan-19	Feb-19	Mar-19	Apr-19	May-19	Jun-19	Jul-19	Aug-19	Sep-19	Oct-19	Nov-19	Dec-19	Total	Cumulative	2018	2017	2016
														000' bbl			
Bakhrabad	475	462	432	402	550	706	786	732	736				5,281	1,025	5,022	6,173	7,091
Daily Avg.	15	17	14	13	18	24	25	24	25	0	0	0	19		14	17	229
Bangura	9,547	8,321	8,755	8,380	8,381	7,905	9,092	7,736	8,806				76,923	1,142	94,737	103,198	103,416
Daily Avg.	308	297	282	279	270	264	293	250	294	0	0	0	282		260	283	3,336
Beani Bazar	4,207	3,945	4,525	4,262	4,394	4,198	4,268	4,212	4,072				38,081	1,605	51,187	68,202	56,146
Daily Avg.	136	141	146	142	142	140	138	27	136	0	0	0	139		140	187	1,811
Bibiyana	286,489	247,882	275,825	268,384	277,796	213,400	271,370	238,522	255,294				2,334,963	23,489	3,267,318	3,283,757	3,291,906
Daily Avg.	9,242	8,853	8,898	8,946	8,961	7,113	8,754	7,694	8,510	0	0	0	8,553		8,952	8,997	106,191
Chattak	0	0	0	0	0	0	0	0	0	0	0	0	0	4	0		
Daily Avg.	0	0	0	0	0	0	0	0	0	0	0	0	0		0		
Fenchuganj	126	80	121	108	90	48	41	27	20				661	116	1,625	2,462	6,138
Daily Avg.	4	3	4	4	3	2	1	1	1	0	0	0	2		4	7	198
Feni	0	0	0	0	0	0	0	0	0	0	0	0	0	110	0	0	0
Daily Avg.	0	0	0	0	0	0	0	0	0	0	0	0	0		0	0	0
Habiganj	721	610	776	681	642	571	564	550	541				5,656	135	5,612	3,955	4,143
Daily Avg.	23	22	25	23	21	19	18	18	18	0	0	0	21		15	11	134
Jalalabad	29,901	23,874	25,898	25,716	26,805	23,241	26,311	22,111	28,182				232,039	10,371	367,160	437,070	528,191
Daily Avg.	965	853	835	857	865	775	849	713	939	0	0	0	850		1,006	1,197	17,038
Kailas Tila	17,562	17,085	16,738	16,259	1,545	13,773	15,381	14,743	15,982				129,067	7,924	189,620	203,979	223,169
Daily Avg.	567	610	540	542	50	459	496	476	533	0	0	0	473		520	559	7,199
Kamta	Production Suspended									0	0			4			
Daily Avg.										0	0		0		0	0	
Meghna	589	514	647	678	645	592	605	546	553				5,369	113	7,947	7,741	7,735
Daily Avg.	19	18	21	23	21	20	20	18	18	0	0	0	20		22	21	250
Moulavi Bazar	104	80	63	53	62	27	41	57	59				545	118	856	1,128	1,585
Daily Avg.	3	3	2	2	2	1	1	2	2	0	0	0	2		2	3	51

Monthly Condensate Production by Fields upto September 2019



Field Name	Jan-19	Feb-19	Mar-19	Apr-19	May-19	Jun-19	Jul-19	Aug-19	Sep-19	Oct-19	Nov-19	Dec-19	Total Cumulative 000' bbl	2018	2017	2016	
Narshingdi	1,285	1,131	1,235	1,205	1,217	1,120	785	1,264	1,189				10,431	428	15,797	16,656	17,534
Daily Avg.	41	40	40	40	39	37	25	41	40	0	0	0	38		43	46	566
Rashidpur	1,213	1,038	1,083	1,069	1,084	1,542	1,602	1,645	1,544				11,819	788	14,393	10,723	14,938
Daily Avg.	39	37	35	36	35	51	52	53	51	0	0	0	43		39	29	482
Saldanadi	19	19	21	20	19	17	60	35	27				236	59	137	225	386
Daily Avg.	1	1	1	1	1	1	2	1	1	0	0	0	1		0	1	12
Sangu	0	0	0	0	0	0	0	0	0	0	0	0	0	37	0	0	0
Daily Avg.	0	0	0	0	0	0	0	0	0	0	0	0	0		0	0	0
Semutang	0	0	0	0	0	0	0	0	2				2	5	26	99	272
Daily Avg.	0	0	0	0	0	0	0	0	0	0	0	0	0		0	0	9
Shahbazpur	187	148	211	207	207	27	193	216	200				1,595	8	2,488	1,791	839
Daily Avg.	6	5	7	7	7	1	6	7	7	0	0	0	6		7	5	27
Srikail	3,226	2,920	3,143	2,913	2,950	2,796	2,834	2,776	2,639				26,196	154	33,765	37,879	21,075
Daily Avg.	104	104	101	97	95	93	91	90	88	0	0	0	96		93	104	680
Sundalpur	10	9	10	10	9	24	40	11	11				134	0	121	0	0
Daily Avg.	0	0	0	0	0	1	1	0	0	0	0	0	0		0	0	0
Sylhet	969	864	981	881	901	845	860	838	137				7,278	803	10,277	15,593	20,532
Daily Avg.	31	31	32	29	29	28	28	27	5	0	0	0	27		28	43	662
Titas	13,655	11,331	12,573	12,503	12,163	10,239	11,065	10,500	11,188				105,217	5,329	159,803	154,262	133,133
Daily Avg.	440	405	406	417	392	341	357	339	373	0	0	0	385		438	423	4,295
Begumganj	60	60	57	63	58	54	57	57	65				532	1	201	0	0
Daily Avg.	2	0	0	0	0	2	2	2	0	0	0	0	2		1	0	0
Rupganj	0	0	0	0	0	0	0	0	0				0	1	0	1,133	
Daily Avg.	0	0	0	0	0	0	0	0	0	0	0	0	0		0	3	
Total (000'bbl)	370	320	353	344	340	281	346	307	331	0	0	0	2,992	53,769	4,228	4,356	4,438
Daily Avg. (000'bbl)	11.9	11.4	11.4	11.5	11.0	9	11.2	9.9	11.0	0.0	0	0	11		11.6	11.9	12.2

Note: Historical condensate figure of Sangu available from 2006. Sylhet available from August 1964

Monthly Water Production by Fields in September 2019



Field Name	Jan-19	Feb-19	Mar-19	Apr-19	May-19	Jun-19	Jul-19	Aug-19	Sep-19	Oct-19	Nov-19	Dec-19	Total	2,018	2,017
Bakhrabad	2,117	1,708	1,795	1,720	2,049	2,172	2,259	2,269	2,192				18,281	28,218	8,419
Daily Avg.	68	61	58	57	66	72	73	73	73	0	0	0	67	77	
Bangura	3,330	3,016	3,301	3,107	3,197	2,968	3,296	2,797	3,266				28,278	43,917	11,705
Daily Avg.	107	108	106	104	103	99	106	90	109	0	0	0	104	120	
Beani Bazar	9,793	8,568	9,561	9,283	10,305	10,427	11,230	11,705	11,838				92,711	109,854	24,865
Daily Avg.	316	306	308	309	332	348	362	378	395	0	0	0	340	301	
Bibiyana	16,351	14,524	15,756	15,544	16,508	15,623	17,001	16,277	16,420				144,005	194,651	47,219
Daily Avg.	527	519	508	518	533	521	548	525	547	0	0	0	527	533	
Chattak	0	0	0	0	0	0	0	0	0	0	0	0			
Daily Avg.	0	0	0	0	0	0	0	0	0	0	0	0	0	0	
Fenchuganj	6,323	3,006	3,558	3,470	2,712	2,861	3,603	2,667	1,840				30,038	74,969	6,700
Daily Avg.	204	107	115	116	87	95	116	86	61	0	0	0	110	205	
Feni	0	0	0	0	0	0	0	0	0	0	0	0	0	0	0
Daily Avg.	0	0	0	0	0	0	0	0	0	0	0	0	0	0	0
Habiganj	2,532	2,133	1,034	874	988	820	793	775	782				10,731	39,104	5,197
Daily Avg.	82	76	33	29	32	27	26	25	26	0	0	0	39	107	
Jalalabad	4,717	4,157	4,424	4,369	4,254	3,659	3,872	3,213	4,920				37,585	55,950	12,915
Daily Avg.	152	148	143	146	137	122	125	104	164	0	0	0	138	153	
Kailas Tila	3,934	3,519	3,851	3,562	1,772	3,011	5,189	3,128	4,103				32,069	43,233	6,809
Daily Avg.	127	126	124	119	57	100	167	101	137	0	0	0	117	118	
Kamta	0	0	0	0	0	0	0	0	0	0	0	0			
Daily Avg.	0	0	0	0	0	0	0	0	0	0	0	0	0	0	
Meghna	211	429	525	631	631	651	693	639	790				5,200	2,014	551
Daily Avg.	7	15	17	21	20	22	22	21	26	0	0	0	19	6	
Moulavi Baza	1,379	710	735	550	427	189	200	237	224				4,652	13,965	754
Daily Avg.	44	25	24	18	14	6	6	8	7	0	0	0	17	38	
Narshingdi	883	798	888	879	939	806	466	884	854				7,397	10,374	2,645
Daily Avg.	28	29	29	29	30	27	15	29	28	0	0	0	27	28	
Rashidpur	13,567	12,332	13,512	12,940	13,181	12,638	13,173	13,322	13,033				117,698	137,406	30,969
Daily Avg.	438	440	436	431	425	421	425	430	434	0	0	0	431	376	
Saldanadi	129	115	126	127	131	127	137	140	132				1,164	813	387
Daily Avg.	4	4	4	4	4	4	4	5	4	0	0	0	4	2	

Monthly Water Production by Fields in September 2019



Field Name	Jan-19	Feb-19	Mar-19	Apr-19	May-19	Jun-19	Jul-19	Aug-19	Sep-19	Oct-19	Nov-19	Dec-19	Total	2,018	2,017
Sangu	0	0	0	0	0	0	0	0	0	0	0	0	0	0	0
Daily Avg.	0	0	0	0	0	0	0	0	0	0	0	0	0	0	0
Semutang	45	47	69	63	65	63	74	71	100				595	3,002	719
Daily Avg.	1	2	2	2	2	2	2	2	3	0	0	0	2	8	
Shahbazpur	1,789	1,679	2,096	2,180	2,244	2,257	2,038	2,306	2,191				18,780	22,110	3,912
Daily Avg.	58	60	68	73	72	75	66	74	73	0	0	0	69	61	
Srikail	1,649	1,517	2,021	1,641	1,662	1,592	1,654	1,698	1,557				14,990	18,432	4,904
Daily Avg.	53	54	65	55	54	53	53	55	52	0	0	0	55	50	
Sundalpur	26	24	27	27	27	32	48	28	27				265	219	0
Daily Avg.	1	1	1	1	1	1	2	1	1	0	0	0	1	1	
Sylhet	2,312	2,022	2,221	2,156	2,234	2,511	4,664	5,098	401				23,619	20,362	1,298
Daily Avg.	75	72	72	72	72	84	150	164	13	0	0	0	87	56	
Titas	49,706	45,683	50,613	49,852	54,221	50,778	53,773	54,016	30,523				439,165	556,608	126,334
Daily Avg.	1,603	1,632	1,633	1,662	1,749	1,693	1,735	1,742	1,017	0	0	0	1,609	1,525	
Begumganj	69	54	61	59	59	67	66	56	62				552	207	0
Daily Avg.	2	2	2	2	2	2	2	2	2	0	0	0	2	1	
Rupganj	0		0			0	0		0				0	0	34
Daily Avg.	0	0	0	0	0	0	0	0	0	0	0	0	0	0	
Total (000'bl)	120,860	106,040	116,173	113,034	117,606	113,251	124,229	121,326	95,255	0	0	0	1,027,776	1,375,408	296
Daily Avg. (000'bbl)	3,899	3,787	3,748	3,768	3,794	3,775	4,007	3,914	3,175	0	0	0	3,765	3,768	1

Conditions of Field and Well upto September 2019



Well	company	well type	Discovery	production start	Drilled depth (ft)	Pressure	Pressure type	Completion Zone
Field : Bakharabad								
BKB-1	BGFCL	Vertical	1969	June,1969	9309		FWHP	J
BKB-2	BGFCL	Directional	1969	October,1981	7496	248-274	FWHP	G
BKB-3	BGFCL	Directional	1969	April,1982	9339	356-412	FWHP	G
BKB-4	BGFCL	Directional	1969	June,1982	9430			D
BKB-5	BGFCL	Directional	1969	Sept,1982	9675	1555-1646	FWHP	B
BKB-6	BGFCL	Directional	1969	March,1989	8785			J
BKB-7	BGFCL	Directional	1969	July,1989	8605		FWHP	J
BKB-8	BGFCL	Directional	1969	Sept,1989	8840	490-523	FWHP	J
BKB-9	BGFCL	Vertical	1969	August,2013	8318	1005-1097	FWHP	G
BKB-10	BGFCL	Directional	1969	June,2016	9291	1010-1102	FWHP	K
Field : Bangura								
Bangura-1	Tullow		2004			887-940	FWHP	D
Bangura-2	Tullow		2004			587-685	FWHP	D/E
Bangura-3	Tullow		2004			719-789	FWHP	D
Bangura-6	Tullow		2004			708-780	FWHP	D
Bangura-5	Tullow		2004			579-621	FWHP	D
Field : Beani Bazar								
BB-1	SGFL		1981	July,1999	13480	580-620	SIWHP	Upper
BB-2	SGFL		1981	July,1999	12048	3210-3220	FWHP	Upper
Field : Bibiyana								
BY-1	Chevron		1998			1547-2007	FWHP	BB60, BB66
BY-2	Chevron		1998			1313-1390	FWHP	BB60, BH20A, BH20E
BY-3	Chevron		1998			1363-1403	FWHP	BB70
BY-4	Chevron		1998			1330-1390	FWHP	BH10
BY-5	Chevron		1998			1254-1299	FWHP	BH20A, BH20B, BH20C, BH20D
BY-6	Chevron		1998			1250-1486	FWHP	BB70
BY-7	Chevron		1998			1454-1566	FWHP	BH10
BY-8	Chevron		1998			1270-1297	FWHP	BH20A, BH20B
BY-9	Chevron		1998			1243-1273	FWHP	BH10
BY-10	Chevron		1998			1465-1533	FWHP	BB60
BY-11	Chevron		1998			1260-1284	FWHP	BH20A, BH20B
BY-12	Chevron		1998			1259-1332	FWHP	BB70
BY-13	Chevron		1998			1300-1356	FWHP	BH20A, BH20B
BY-14	Chevron		1998			1342-1632	FWHP	BH20A, BH20B
BY-15	Chevron		1998			2189-2240	FWHP	BB60
BY-16	Chevron		1998			1381-1644	FWHP	BH10, BH20D

Conditions of Field and Well upto September 2019



Well	company	well type	Discovery	production start	Drilled depth (ft)	Pressure	Pressure type	Completion Zone
BY-17	<i>Chevron</i>		<i>1998</i>			<i>2104-2229</i>	<i>FWHP</i>	<i>BB60</i>
BY-18	<i>Chevron</i>		<i>1998</i>			<i>1904-2218</i>	<i>FWHP</i>	<i>BB60</i>
BY-19	<i>Chevron</i>		<i>1998</i>			<i>1354-1477</i>	<i>FWHP</i>	<i>BH10, BH20A</i>
BY-20	<i>Chevron</i>		<i>1998</i>			<i>1248-1262</i>	<i>FWHP</i>	<i>BH20D, BH20A, BH10</i>
BY-21	<i>Chevron</i>		<i>1998</i>			<i>1333-1348</i>	<i>FWHP</i>	<i>BH20A, BH20B, BH10</i>
BY-22	<i>Chevron</i>		<i>1998</i>			<i>1552-1586</i>	<i>FWHP</i>	<i>BB60</i>
BY-23	<i>Chevron</i>		<i>1998</i>			<i>1739-2021</i>	<i>FWHP</i>	<i>BH10, BH20A, BH20B, BH20C</i>
BY-24	<i>Chevron</i>		<i>1998</i>			<i>1337-2091</i>	<i>FWHP</i>	<i>BB60</i>
BY-25	<i>Chevron</i>		<i>1998</i>			<i>1728-1857</i>	<i>FWHP</i>	<i>BB60, BB66</i>
BY-26	<i>Chevron</i>		<i>1998</i>			<i>1877-2094</i>	<i>FWHP</i>	<i>BB60, BB64</i>
Field : Chattak								
Ch-1	SGFL		1959					
Field : Fenchuganj								
Fenchuganj-2	<i>BAPEX</i>		<i>1988</i>	<i>May, 2004</i>				
Fenchuganj-3	<i>BAPEX</i>		<i>1988</i>	<i>February, 2005</i>		<i>2004-2010</i>		<i>upper</i>
Fenchuganj-4	<i>BAPEX</i>		<i>1988</i>			<i>2037-2065</i>		
Field : Feni								
Feni-1	<i>BAPEX</i>		<i>1981</i>					
Feni-2	<i>BAPEX</i>		<i>1981</i>					
Feni-3	<i>BAPEX</i>		<i>1981</i>					
Feni-4	<i>BAPEX</i>		<i>1981</i>					
Feni-5	<i>BAPEX</i>		<i>1981</i>					
Field : Habiganj								
Hbj-1	<i>BGFCL</i>	<i>Vertical</i>	<i>1963</i>	<i>Feb, 1969</i>	<i>11500</i>		<i>FWHP</i>	<i>upper</i>
Hbj-2	<i>BGFCL</i>	<i>Vertical</i>	<i>1963</i>	<i>Feb, 1969</i>	<i>5100</i>		<i>FWHP</i>	<i>upper</i>
Hbj-3	<i>BGFCL</i>	<i>Vertical</i>	<i>1963</i>	<i>July, 1985</i>	<i>5282</i>	<i>1478-1486</i>	<i>FWHP</i>	<i>upper</i>
Hbj-4	<i>BGFCL</i>	<i>Vertical</i>	<i>1963</i>	<i>May, 1985</i>	<i>5249</i>	<i>1460-1467</i>	<i>FWHP</i>	<i>upper</i>
Hbj-5	<i>BGFCL</i>	<i>Directional</i>	<i>1963</i>	<i>Feb, 1992</i>	<i>11552</i>	<i>1440-1446</i>	<i>FWHP</i>	<i>upper</i>
Hbj-6	<i>BGFCL</i>	<i>Vertical</i>	<i>1963</i>	<i>Feb, 1992</i>	<i>5515</i>	<i>1375-1379</i>	<i>FWHP</i>	<i>upper</i>
Hbj-7	<i>BGFCL</i>	<i>Vertical</i>	<i>1963</i>	<i>April, 2000</i>	<i>10236</i>	<i>1331-1139</i>	<i>FWHP</i>	<i>upper</i>
Hbj-8	<i>BGFCL</i>	<i>Vertical</i>	<i>1963</i>	<i>May, 2000</i>	<i>5280</i>			<i>upper</i>
Hbj-9	<i>BGFCL</i>	<i>Vertical</i>	<i>1963</i>	<i>July, 1998</i>	<i>5249</i>			<i>upper</i>
Hbj-10	<i>BGFCL</i>	<i>Vertical</i>	<i>1963</i>	<i>Apr, 2000</i>	<i>5133</i>	<i>1322-1331</i>	<i>FWHP</i>	<i>upper</i>
Hbj-11	<i>BGFCL</i>	<i>Vertical</i>	<i>1963</i>	<i>February, 2008</i>	<i>10499</i>	<i>1417-1423</i>	<i>FWHP</i>	<i>upper</i>
Field : Jalalabad								
JB-1	<i>Chevron</i>		<i>1989</i>			<i>1333-1436</i>	<i>FWHP</i>	<i>BB60, BB50</i>

Conditions of Field and Well upto September 2019



Well	company	well type	Discovery	production start	Drilled depth (ft)	Pressure	Pressure type	Completion Zone
JB-2	<i>Chevron</i>		<i>1989</i>			<i>1279-1294</i>	<i>FWHP</i>	<i>BB50, BB60</i>
JB-3	<i>Chevron</i>		<i>1989</i>			<i>1332-1375</i>	<i>FWHP</i>	<i>BB50, BB60</i>
JB-4	<i>Chevron</i>		<i>1989</i>			<i>1365-1425</i>	<i>FWHP</i>	<i>BB60</i>
JB-6	<i>Chevron</i>		<i>1989</i>			<i>1354-1362</i>	<i>FWHP</i>	<i>BB60, BB50</i>
JB-7	<i>Chevron</i>		<i>1989</i>			<i>1666-1679</i>	<i>FWHP</i>	<i>BB20</i>
JB-8	<i>Chevron</i>		<i>1989</i>			<i>1362-1370</i>	<i>FWHP</i>	<i>BB50, BB60</i>
Field : Kailas Tila								
KTL-1	<i>SGFL</i>		<i>1962</i>	<i>June, 1983</i>	<i>12417</i>	<i>0</i>	<i>SIWHP</i>	
KTL-2	<i>SGFL</i>		<i>1962</i>	<i>Feb, 1995</i>		<i>2225-2230</i>	<i>FWHP</i>	
KTL-3	<i>SGFL</i>		<i>1962</i>	<i>March, 1995</i>		<i>2470-2495</i>	<i>FWHP</i>	
KTL-4	<i>SGFL</i>		<i>1962</i>	<i>March, 1997</i>		<i>2360-2410</i>	<i>FWHP</i>	
KTL-5	<i>SGFL</i>		<i>1962</i>	<i>Sep, 2006</i>		<i>0</i>	<i>SIWHP</i>	
KTL-6	<i>SGFL</i>		<i>1962</i>	<i>Aug, 2007</i>		<i>2490-2495</i>	<i>FWHP</i>	
KTL-7	<i>SGFL</i>		<i>1962</i>			<i>0</i>	<i>SIWHP</i>	
Field : Kamta								
Kamta-1	<i>BGFCL</i>	<i>Vertical</i>	<i>1981</i>	<i>july,1982</i>	<i>11857</i>			<i>N/A</i>
Field : Meghna								
M-1	<i>BGFCL</i>	<i>Vertical</i>	<i>2004</i>	<i>july,1990</i>	<i>10069</i>	<i>1400-1450</i>	<i>FWHP</i>	<i>A,E,F & G</i>
Field : Moulavi Bazar								
MV Bazar-2	<i>Chevron</i>		<i>1997</i>			<i>800-820</i>	<i>FWHP</i>	<i>BB70</i>
MV Bazar-3	<i>Chevron</i>		<i>1997</i>			<i>800-820</i>	<i>FWHP</i>	<i>BB70</i>
MV Bazar-4	<i>Chevron</i>		<i>1997</i>			<i>946-952</i>	<i>FWHP</i>	<i>BB20</i>
MV Bazar-5	<i>Chevron</i>		<i>1997</i>			<i>0</i>	<i>SIWHP</i>	<i>BB60</i>
MV Bazar-6	<i>Chevron</i>		<i>1997</i>			<i>822-890</i>	<i>FWHP</i>	<i>BB20</i>
MV Bazar-7	<i>Chevron</i>		<i>1997</i>			<i>844-901</i>	<i>FWHP/SIWHP</i>	<i>BB20</i>
MV Bazar-9	<i>Chevron</i>		<i>1997</i>			<i>0</i>	<i>SIWHP</i>	<i>BB46, BB48, BB60</i>
Field : Narshingdi								
N-1	<i>BGFCL</i>	<i>vertical</i>	<i>1990</i>	<i>october,1990</i>	<i>11320</i>	<i>1143-1197</i>	<i>FWHP</i>	<i>BL</i>
N-2	<i>BGFCL</i>	<i>vertical</i>	<i>1990</i>	<i>february,2007</i>	<i>10778</i>	<i>1015-1097</i>	<i>FWHP</i>	<i>BL</i>
Field : Rashidpur								
RP-1	<i>SGFL</i>		<i>1960</i>			<i>1290-1291</i>	<i>FWHP</i>	<i>Upper</i>
RP-2	<i>SGFL</i>		<i>1960</i>			<i>73</i>	<i>SIWHP</i>	<i>Lower</i>
RP-3	<i>SGFL</i>		<i>1960</i>			<i>1548-1568</i>	<i>FWHP</i>	<i>Lower</i>
RP-4	<i>SGFL</i>		<i>1960</i>			<i>1450-1655</i>	<i>FWHP</i>	<i>Lower</i>
RP-5	<i>SGFL</i>		<i>1960</i>			<i>2291</i>	<i>SIWHP</i>	<i>Lower</i>
RP-6	<i>SGFL</i>		<i>1960</i>			<i>870</i>	<i>SIWHP</i>	<i>A</i>

Conditions of Field and Well upto September 2019



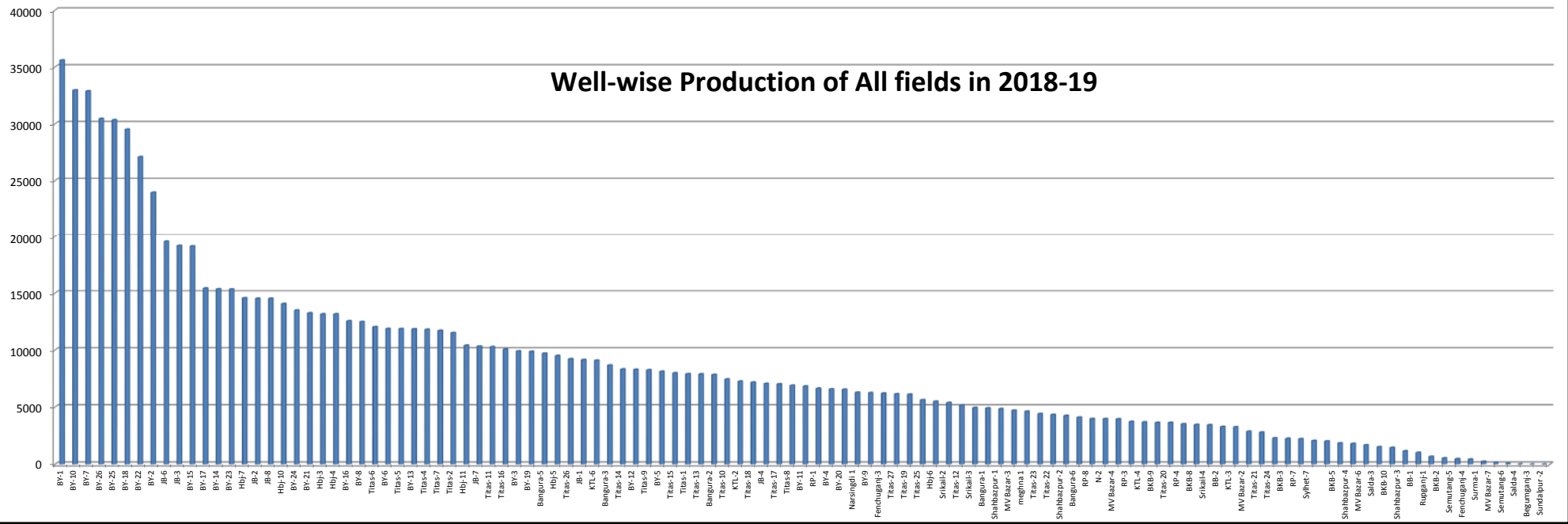
Well	company	well type	Discovery	production start	Drilled depth (ft)	Pressure	Pressure type	Completion Zone
RP-7	SGFL		1960			1308-1338	FWHP	Lower
RP-8	SGFL		1960			1600-1625	FWHP	Upper
Field : Salda Nadi								
Salda-1	BAPEX		1995					
Salda-2	BAPEX		1995					
Salda-3	BAPEX	Directional	1995	February, 2012		639-640, 698-700		Upper/Lower
Salda-4	BAPEX		1995					
Field : Sangu								
Sangu-1	BGFCL		1996					
Sangu-3z	BGFCL		1996					
Sangu-4	BGFCL		1996					
Sangu-5	BGFCL		1996					
Sangu-7	BGFCL		1996					
Sangu-8	BGFCL		1996					
Sangu-9	BGFCL		1996					
Sangu-10	BGFCL		1996					
Sangu-11	BGFCL		1996					
Field : Semutang								
Semutang-5	BAPEX		1967			280-508		Lower Zone
Semutang-6	BAPEX		1967			750-1302		
Field : Shahbazpur								
Shahbazpur-1	BAPEX		1995	May, 2009		2310-3543		Lower Zone
Shahbazpur-2	BAPEX		1995			3541-4133		Lower Zone
Shahbazpur-3	BAPEX		1995			4300		Upper Zone
Shahbazpur-4	BAPEX		1995			4250		Upper Zone
Field : Srikail								
Srikail-2	BAPEX		2012			990-1016		Upper & Lower D
Srikail-3	BAPEX		2012			981-1043		Upper & Lower D
Srikail-4	BAPEX		2012			1018-1068		Upper & Lower D
Field : Sundalpur								
Sundalpur -1	BAPEX		2011					
Sundalpur -2	BAPEX		2011					
Field : Sylhet								
Sylhet-3	SGFL		1955	Aug, 1958				
Sylhet-6	SGFL		1955	Aug, 1964		800-850	SIWHP	
Sylhet-7	SGFL		1955	Apr, 2005		1750-1820	FWHP	Lower Bokabil

Conditions of Field and Well upto September 2019

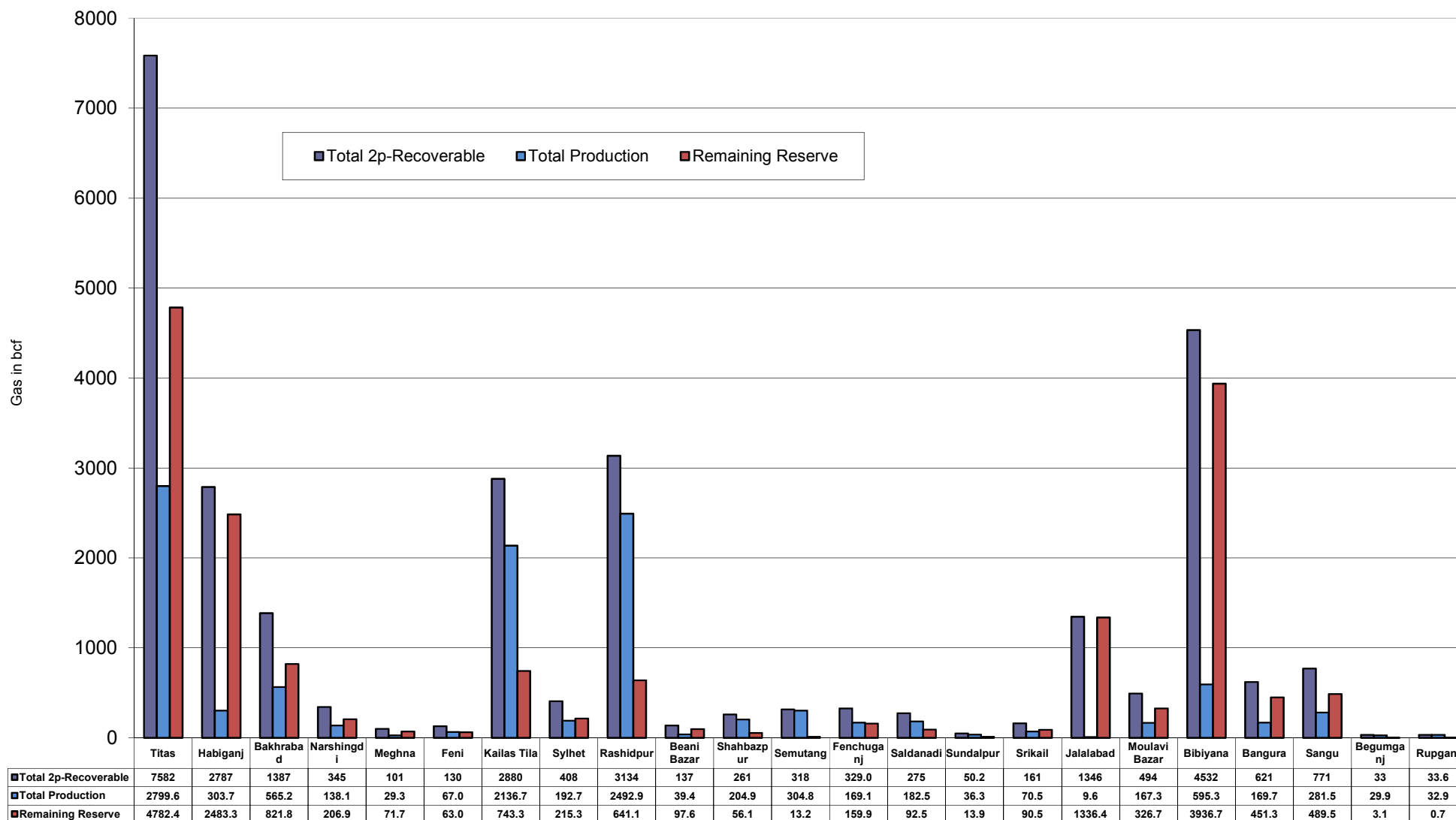


Well	company	well type	Discovery	production start	Drilled depth (ft)	Pressure	Pressure type	Completion Zone
Surma-1	SGFL		1955	June, 2010		230	SIWHP	C & D
Field : Titas								
Titas-1	BGFCL	vertical	1962	Mar,1969	12325	900-925	FWHP	A
Titas-2	BGFCL	vertical	1962	Fen,1969	10574	960-1020	FWHP	A
Titas-3	BGFCL	vertical	1962	sept,1969	9315	0	FWHP	A
Titas-4	BGFCL	vertical	1962	oct,1969	9350	1020-1070	FWHP	A
Titas-5	BGFCL	Directional	1962	jan,1981	10805	990-1035	FWHP	A
Titas-6	BGFCL	vertical	1962	Feb,1984	10072	1195-1225	FWHP	A
Titas-7	BGFCL	Directional	1962	July,1985	11006	1090-1160	FWHP	A
Titas-8	BGFCL	Directional	1962	sept,1985	11760	1000-1030	FWHP	B & C
Titas-9	BGFCL	Directional	1962	jan,1988	11893	1040-1085	FWHP	B & C
Titas-10	BGFCL	Directional	1962	may,1988	12139	1140-1180	FWHP	A
Titas-11	BGFCL	vertical	1962	Jun,1991	10462	1275-1310	FWHP	A
Titas-12	BGFCL	Directional	1962	July,2002	9873	1465-1500	FWHP	A
Titas-13	BGFCL	Directional	1962	June,2000	11487	1085-1115	FWHP	A
Titas-14	BGFCL	Directional	1962	June,2000	11004	1200-1250	FWHP	A
Titas-15	BGFCL	vertical	1962	may,2006	10446	0	FWHP	A
Titas-16	BGFCL	Directional	1962	dec,2005	11673	1205-1225	FWHP	A
Titas-17	BGFCL	vertical	1962	feb,2013	9424	1145-1175	FWHP	A
Titas-18	BGFCL	Directional	1962	august,2013	10932	1165-1190	FWHP	A
Titas-19	BGFCL	Directional	1962	may,2014	12730	1365-1415	FWHP	A
Titas-20	BGFCL	Directional	1962	oct,2013	11585	1370-1440	FWHP	A
Titas-21	BGFCL	Directional	1962	dec,2013	11631	1260-1285	FWHP	A
Titas-22	BGFCL	Directional	1962	march,2014	11926	990-1025	FWHP	A
Titas-27	BGFCL	Directional	1962	april,2014	10292	1245-1265	FWHP	A
Titas-23	BGFCL	Directional	1962	feb,2017	11988	2265-2340	FWHP	C
Titas-24	BGFCL	Directional	1962	oct,2016	12686	1120-1245	FWHP	C
Titas-25	BGFCL	vertical	1962	march,2016	11680	1300-1340	FWHP	A
Titas-26	BGFCL	Directional	1962	july,2016	12618	1840-1875	FWHP	C
Field : Begumganj								
Begumganj-3	BAPEX		1977					
Field : Rupganj								
Rupganj-1	BAPEX		2014			38-88		

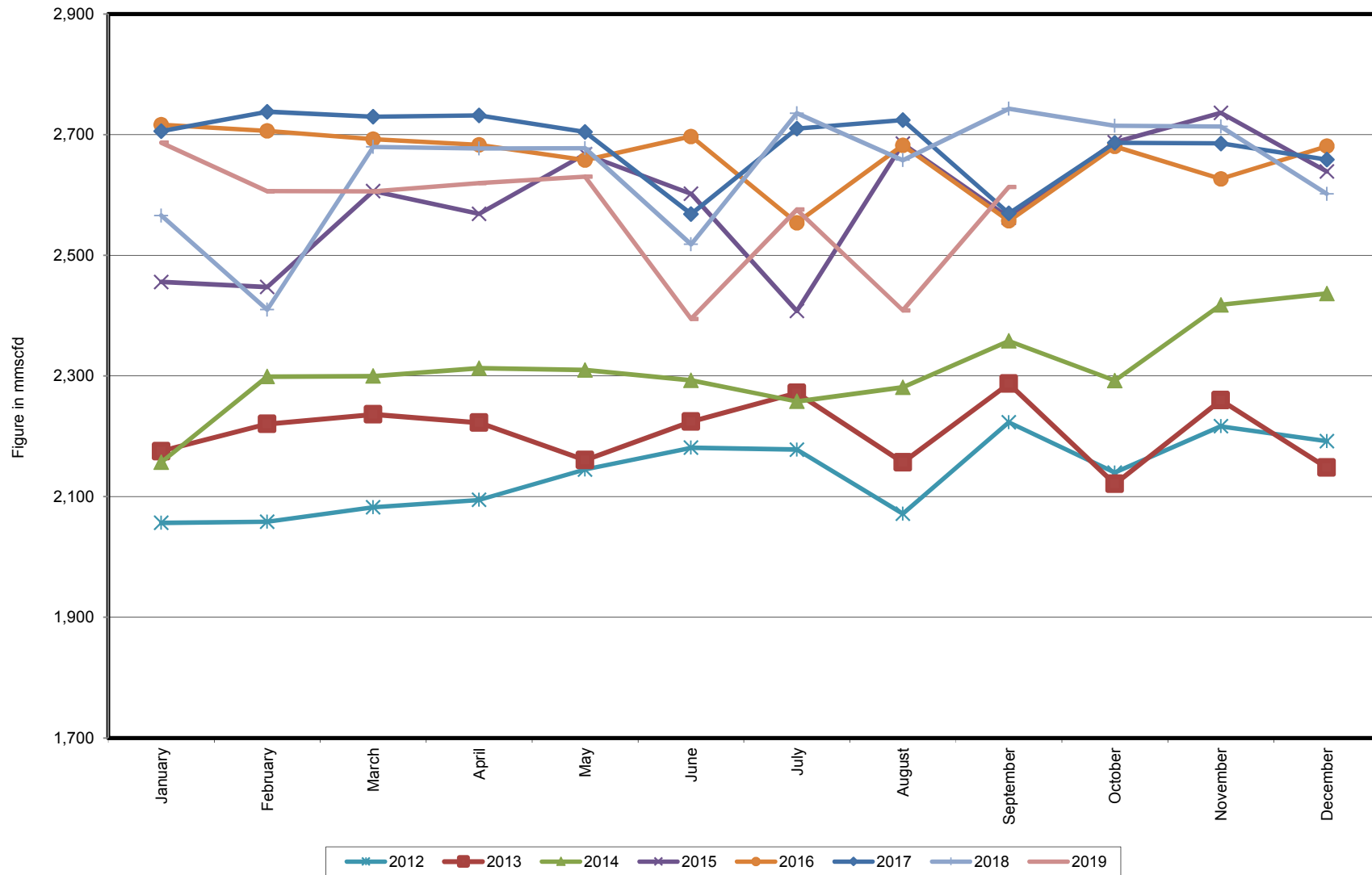
Well-wise Production of All fields in 2018-19



Reserve, Production and Remaining Reserve as of September 2019



Daily Avg. Production From January 2012 to September 2019



Field Wise Daily Avg. Production September 2019

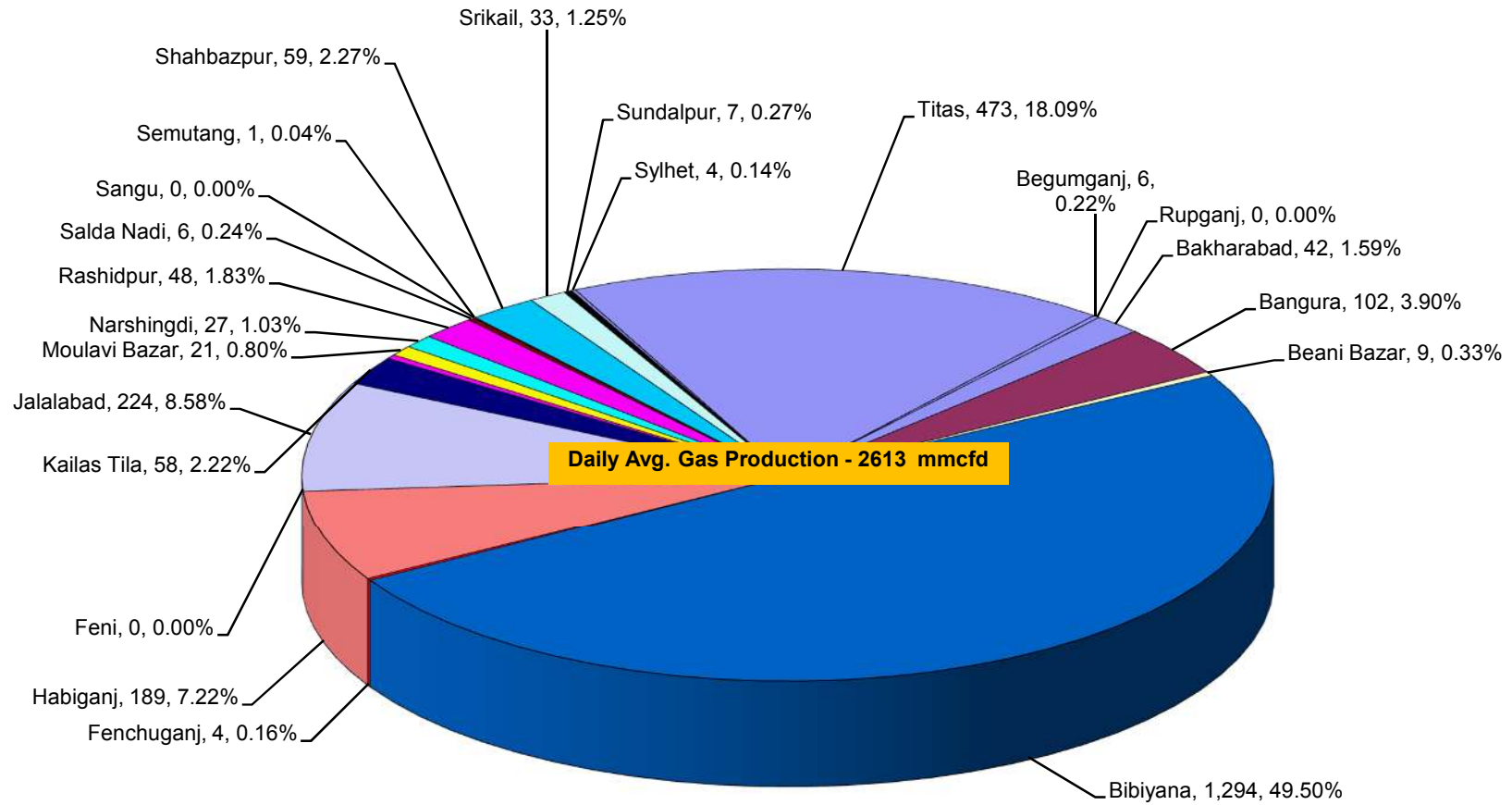
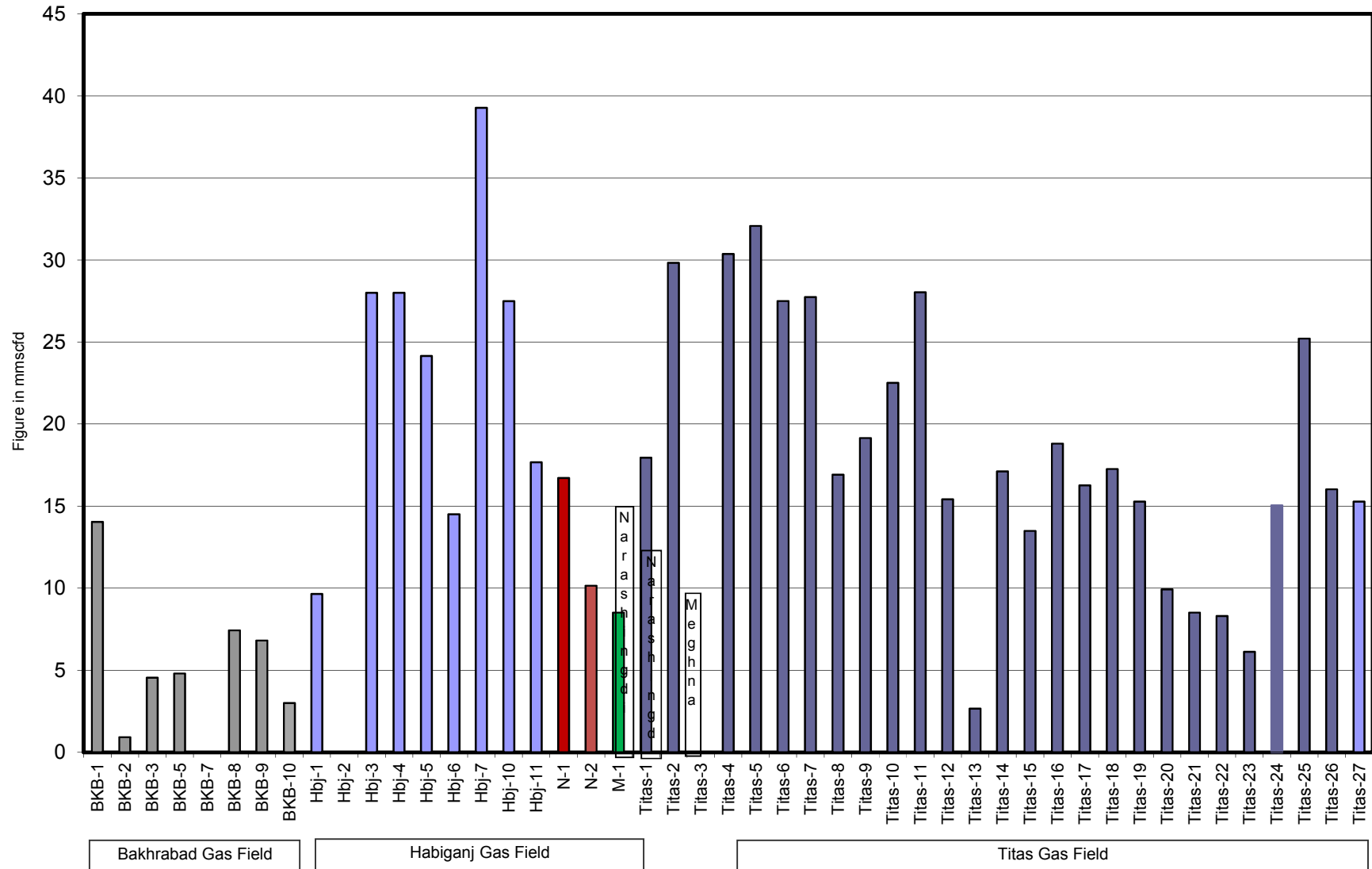


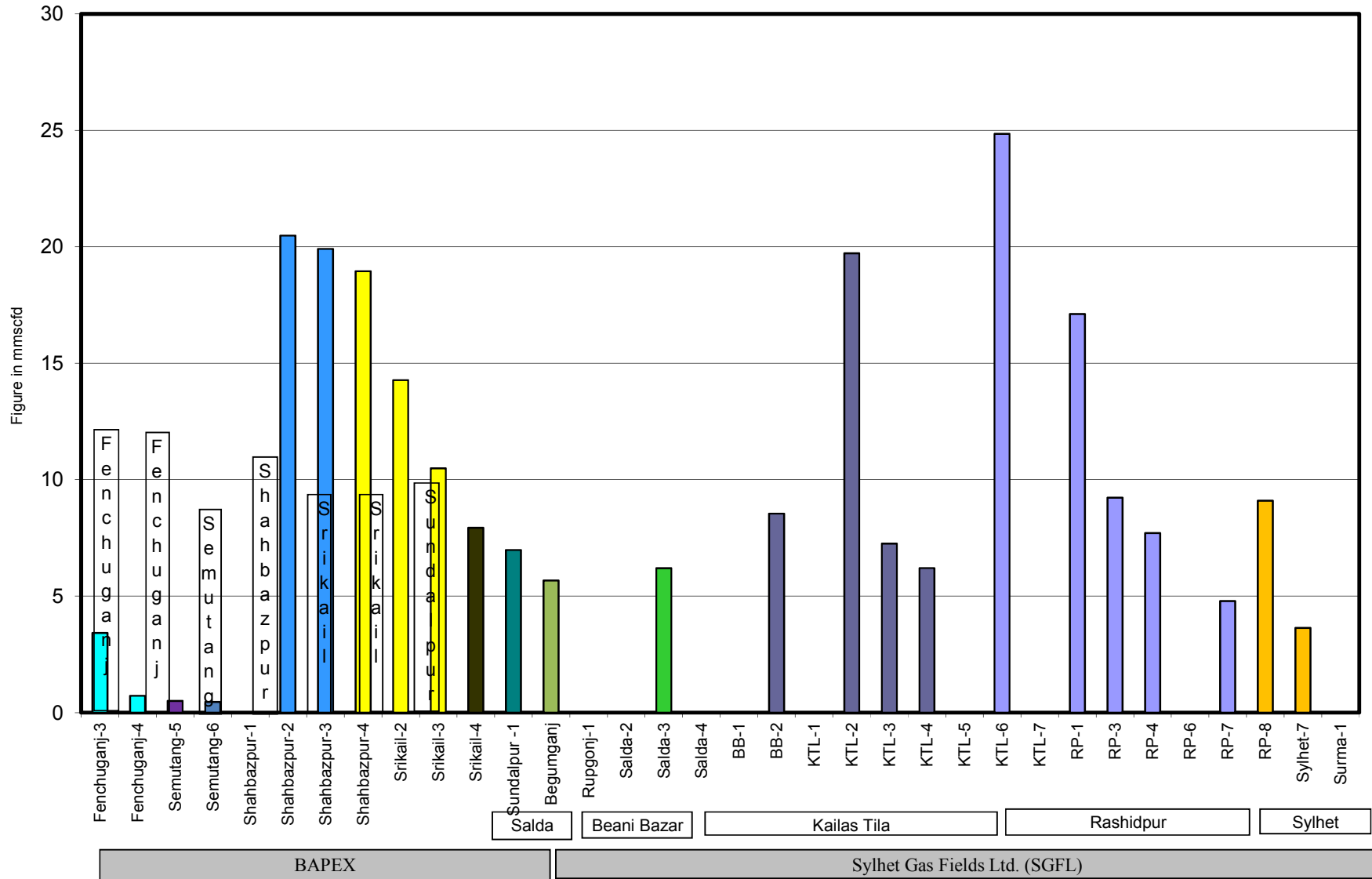
Figure in mmcf and % of total production

Wellwise Daily Avg. Production- BGFCL September 2019

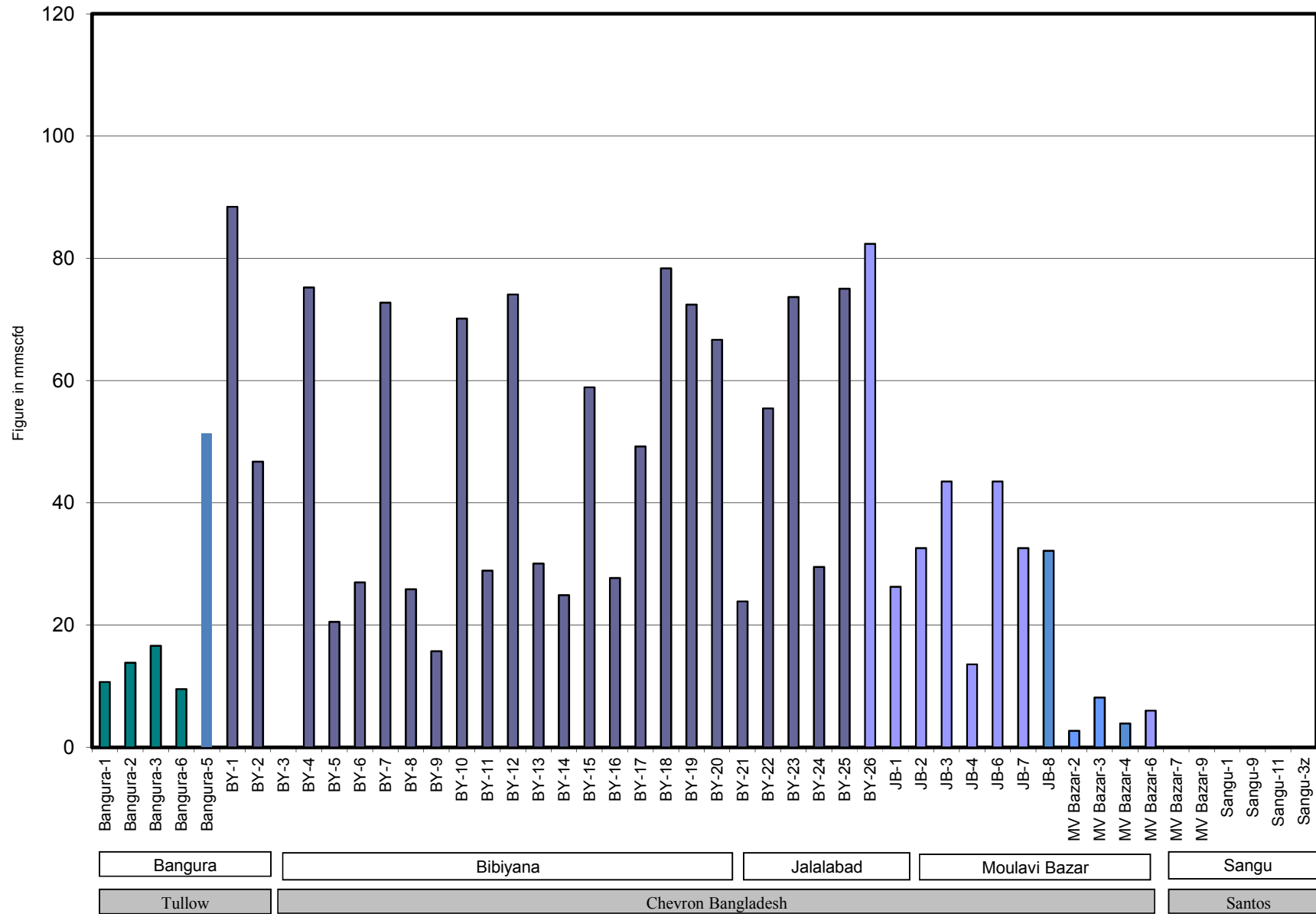


Bangladesh Gas Fields Co. Ltd. (BGFL)

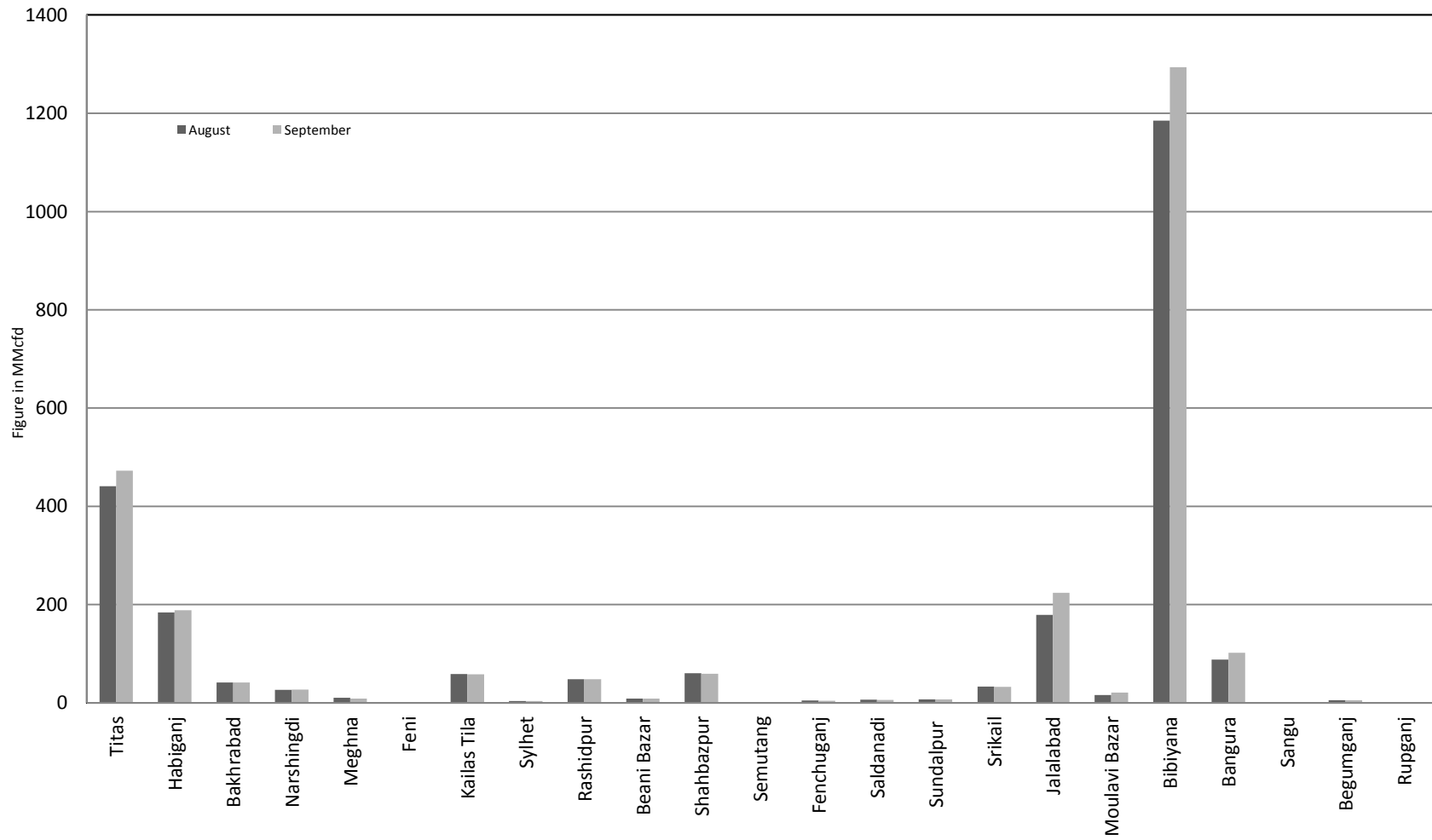
Wellwise Daily Avg. Production- Bapex and SGFL Septembert 2019



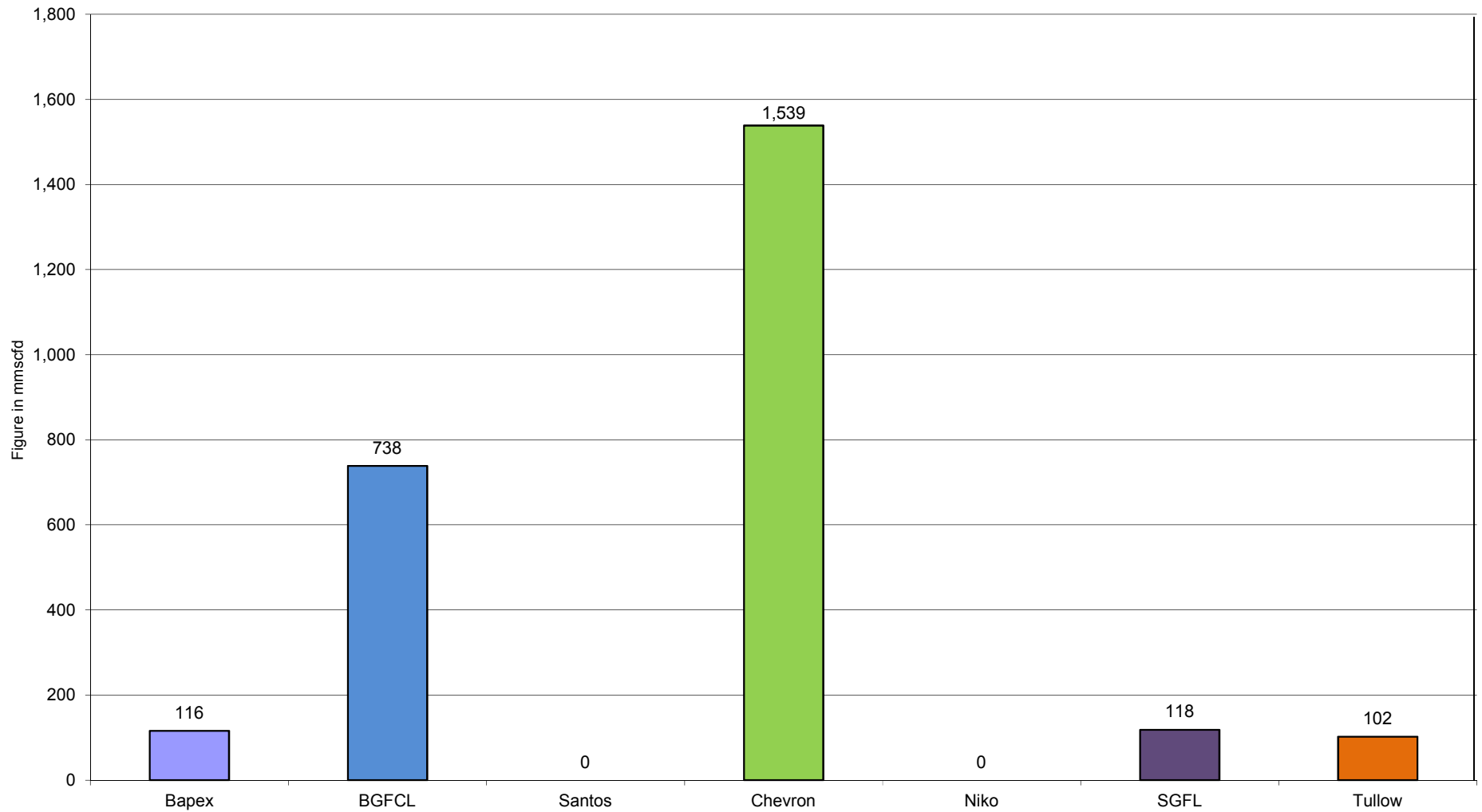
Wellwise Daily Avg. Production- IOC and JVA Sept 2019



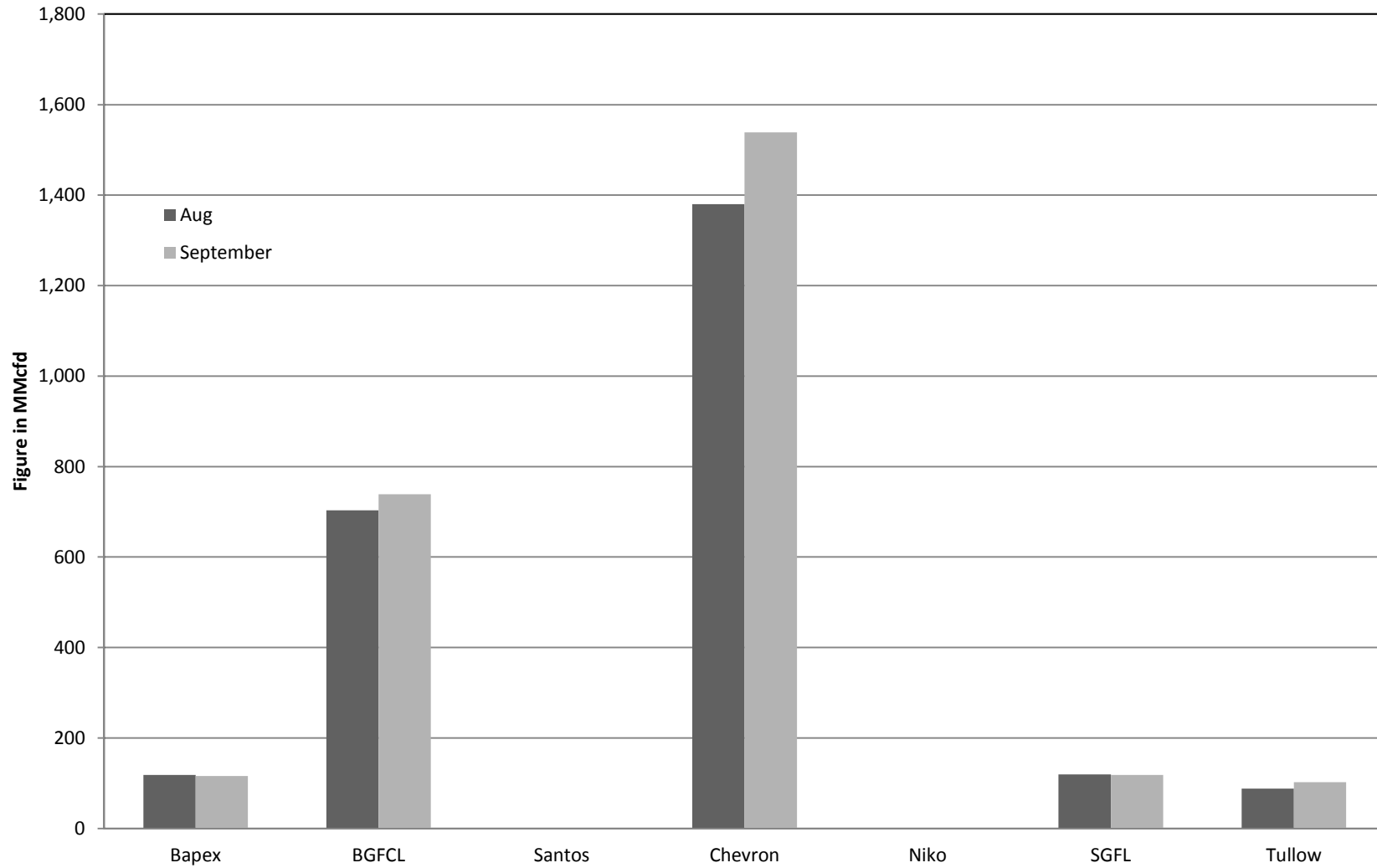
Comparison of fieldwise daily avg. Gas production between August 2019 & September 2019



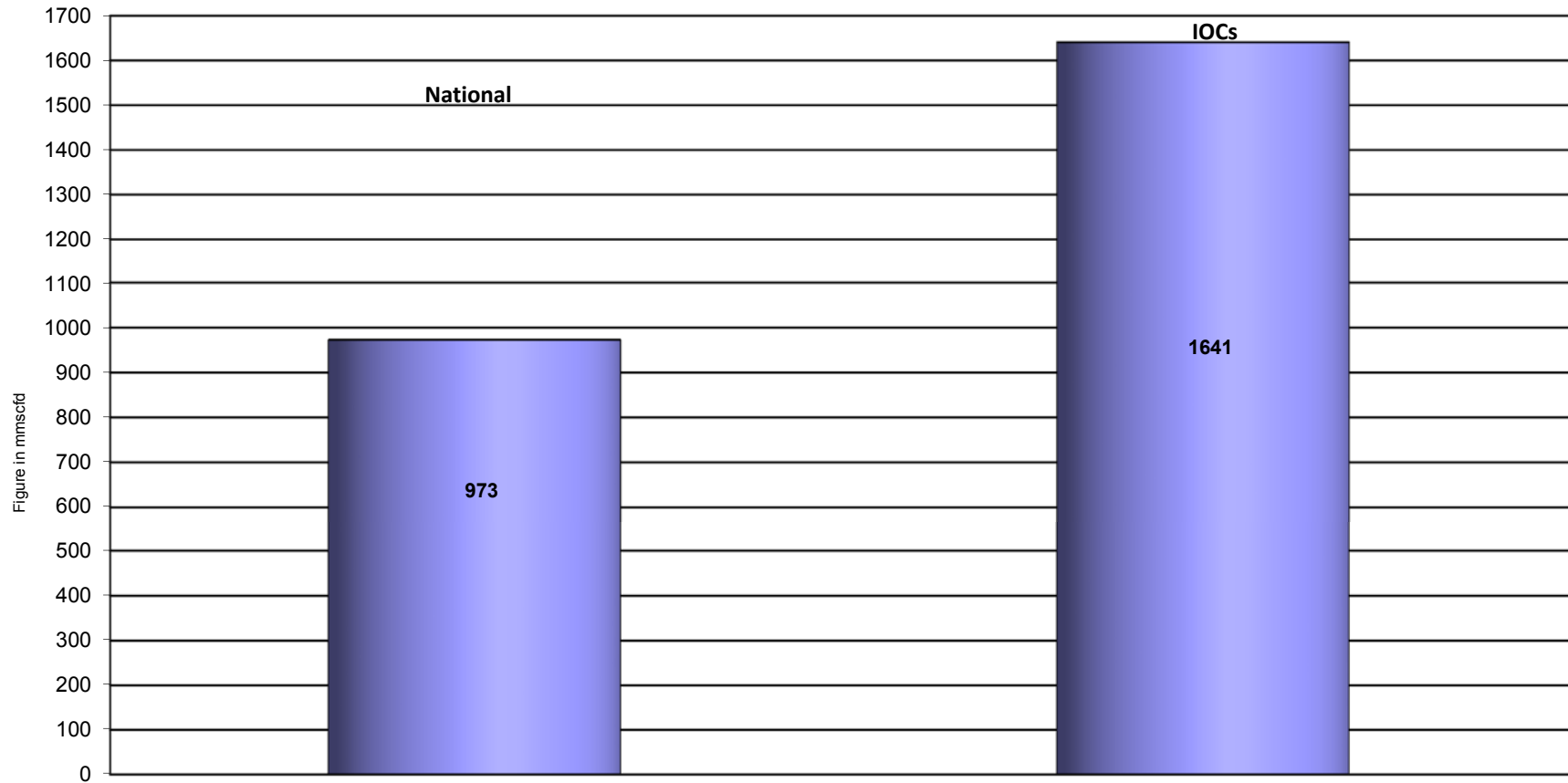
Daily Avg. Production by Operators September 2019



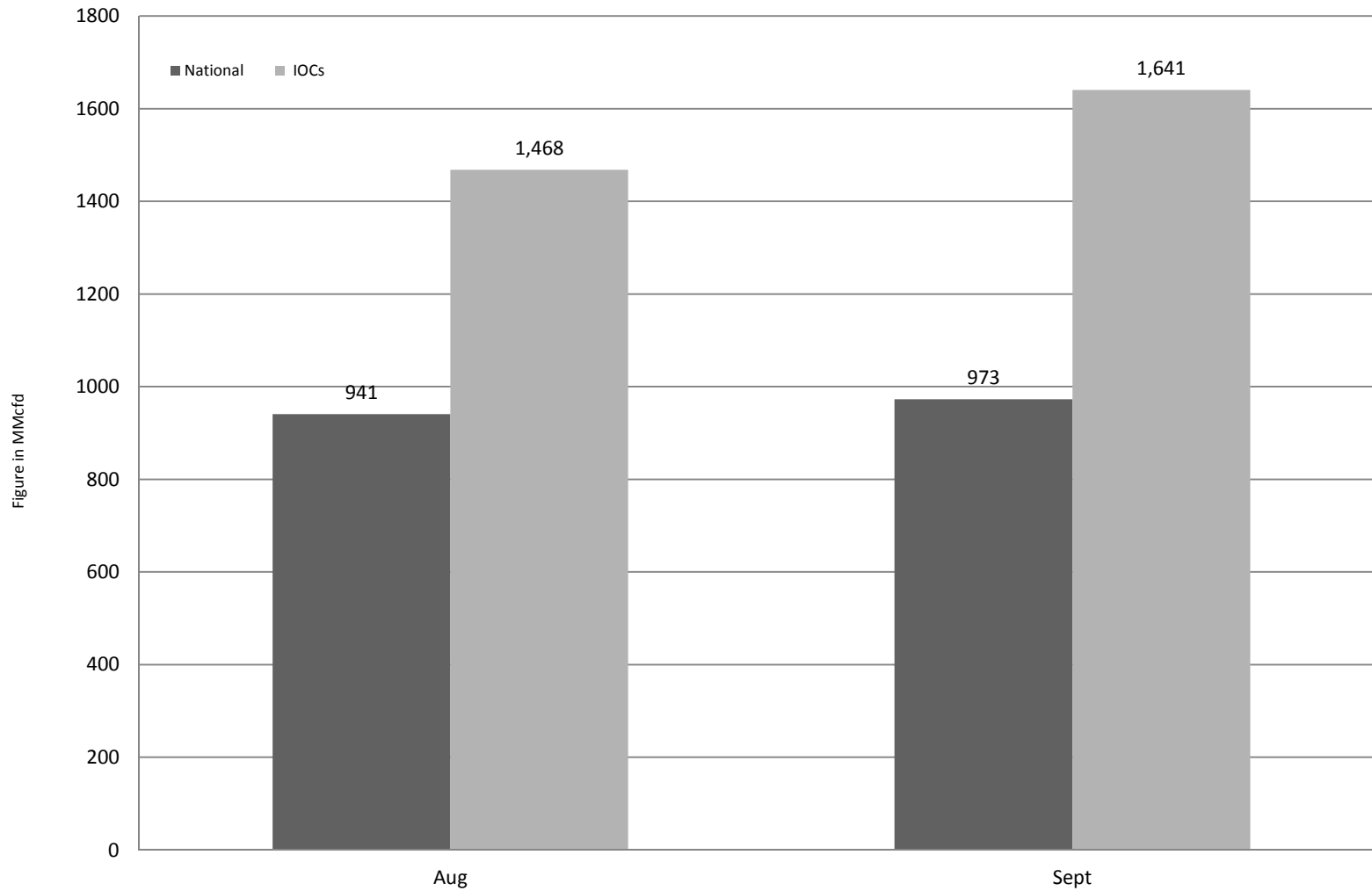
Comparison of operatorwise daily avg. Gas production between August 2019 & September 2019



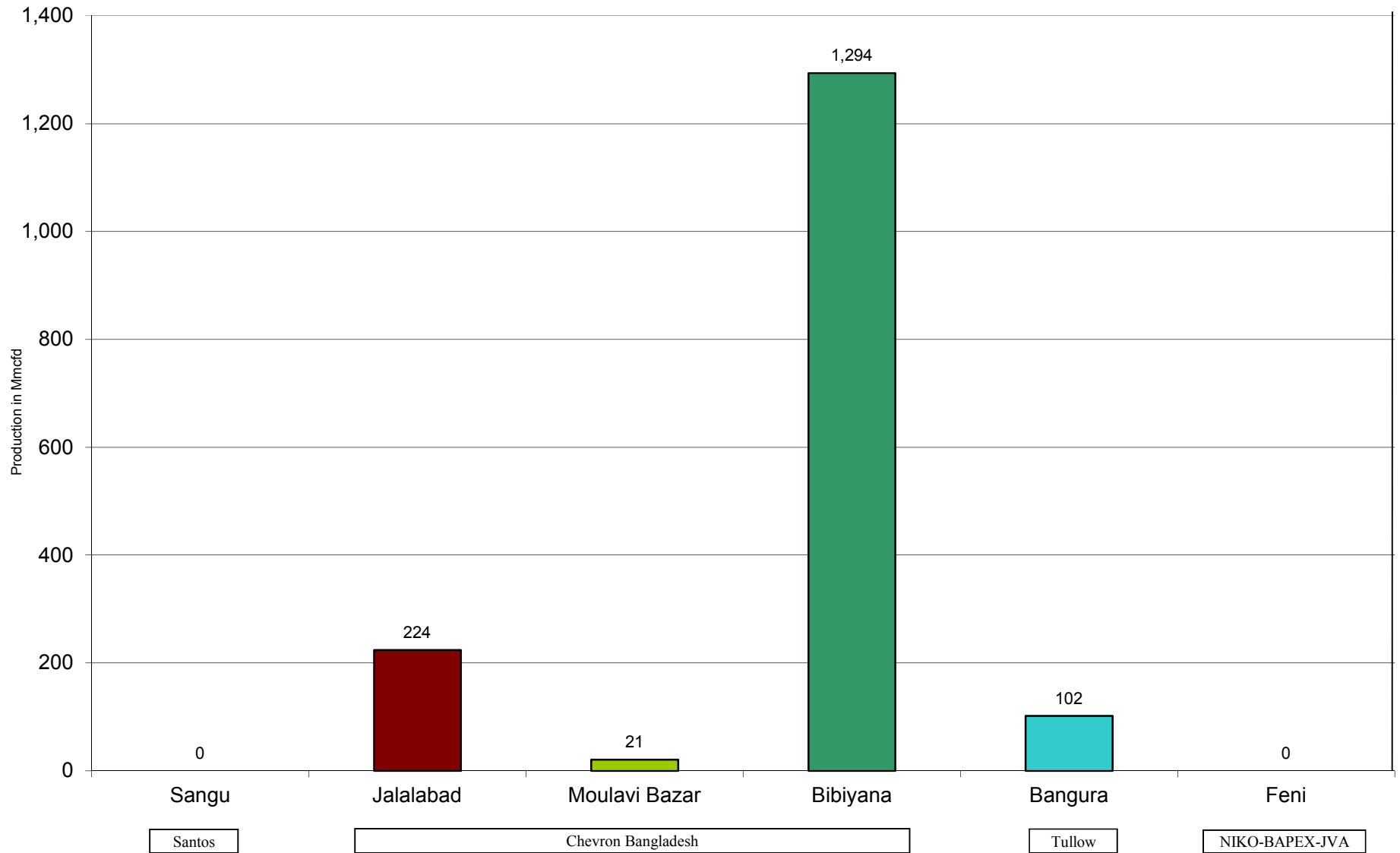
Daily Avg. Production - National Vs. IOCs September 2019



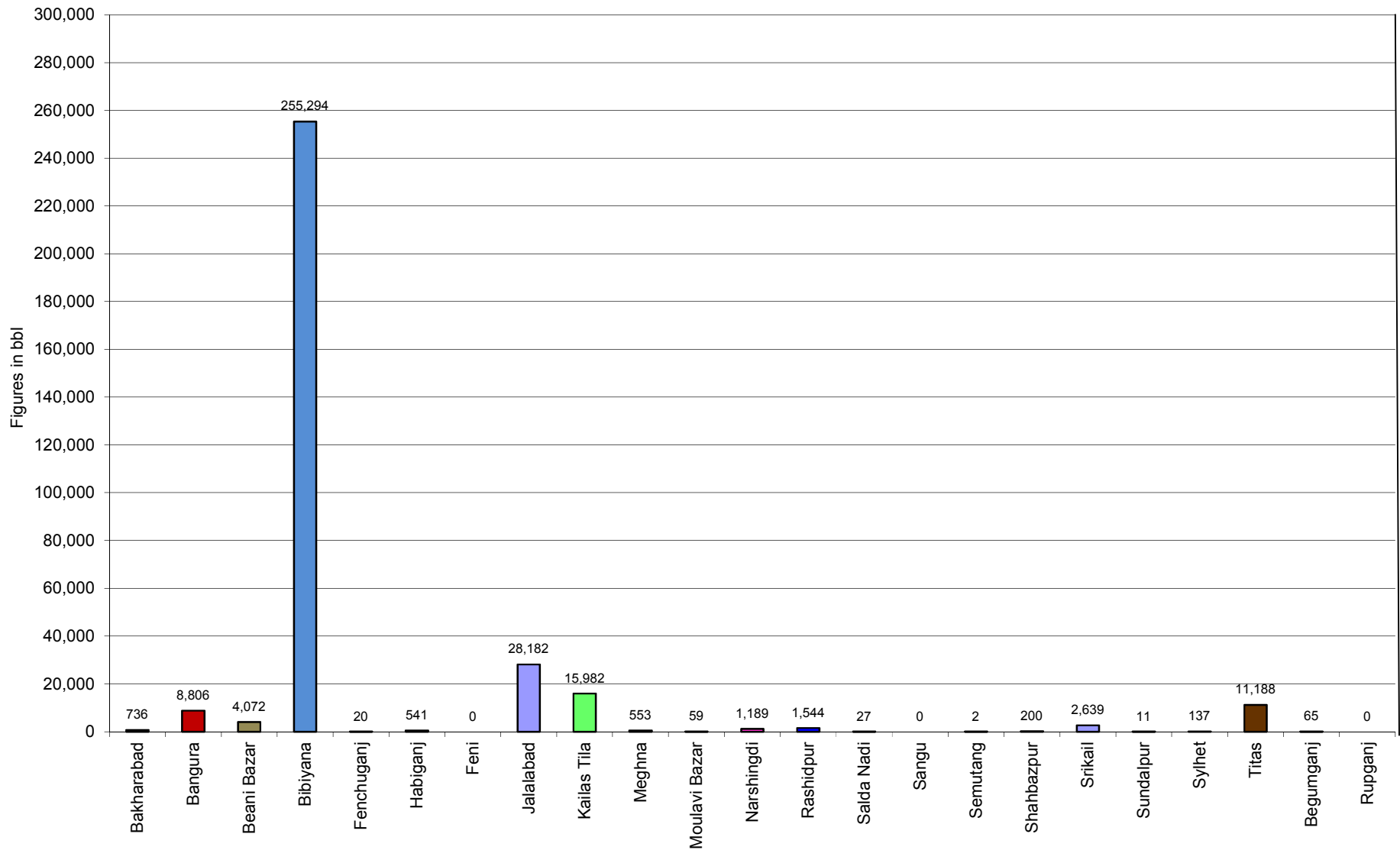
Comparison of daily avg. Gas production - National vs IOC's between August 2019 & September 2019



Daily Avg. Production - IOC and JVA September 2019



Monthly Condensate Production September 2019



Field wise Coal Reserve in Bangladesh

SI No.	Coal Basins	Proved (Mt)	Indicated (Mt)	Inferred (Mt)	Total (Mt)
1	Barapukuria	114.32	211.33	21.06+(43-64)*	346.71+(43-64)*
2	Phulbari	288	226	58	572
3	Khalashpir	-	297.57	225.92	523.49
4	Jamalganj	-	-	1053.9	1053.9
5	Dighipara	-	105	495	600
	Total	402.32	839.9	1896.88-1917.88	3139.10-3160.10

**Resources of VI Seam in second syncline are towards SW of main basin, after Wardell Armstrong*

NOTE: Reserve Figure based on Coal Sector Development Strategy (Final), HCU, PwC

Summary of Reserve and Production of Barapukuria Coal Mine As of 30 September 2019

Coal Initially Place (Proven + Probable)	346,710 kT	346.71 MT
Total Reserve of Seam VI	285,410 kT	285.41 MT
Recoverable from Seam VI Central part(Proven + Probable)	16,540 kT*	16.54 MT
Coal Production in September 2019	80.80 kT	0.08 MT
Cumulative Production as of September 2019	11,054 kT	11.05 MT
Remaining Reserve	5,486 kT	5.49 MT

NOTE: Reserve figure based on Mines and Minerals Development Report ,HCU PwC

*Figure from BCMCL, M/S Wardell Armstrong. According to Mines and Minerals Development Report ,HCU, PwC this figure is 64.8 Mt

Barapukuria Coal Mine-MPM and P Contract (BCMCL)

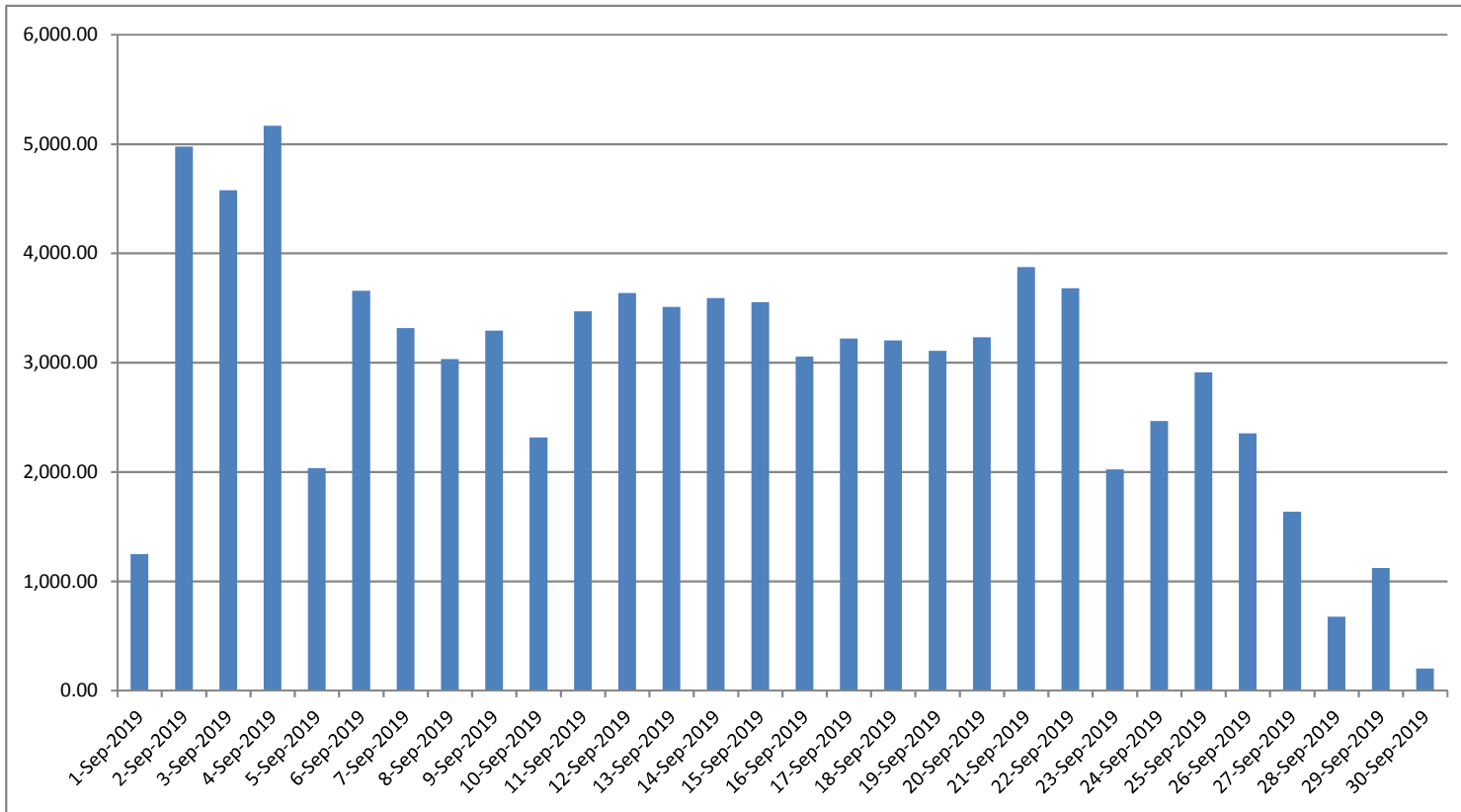
Measurement Record: Surface Belt Weigher

Measurement Period: September 2019

Day wise data	Consortium Daily Output (ton)	Consortium Cumulative Total	BCMCL Daily Output	BCMCL Cumulative Total	Remarks
1-Sep-2019	1,248.50	1,248.50	1,248.50	1,248.50	
2-Sep-2019	4,974.25	6,222.75	4,974.25	6,222.75	
3-Sep-2019	4,576.25	10,799.00	4,576.25	10,799.00	
4-Sep-2019	5,167.25	15,966.25	5,167.25	15,966.25	
5-Sep-2019	2,035.00	18,001.25	2,035.00	18,001.25	
6-Sep-2019	3,657.00	21,658.25	3,657.00	21,658.25	
7-Sep-2019	3,316.50	24,974.75	3,316.50	24,974.75	
8-Sep-2019	3,032.00	28,006.75	3,032.00	28,006.75	
9-Sep-2019	3,294.00	31,300.75	3,294.00	31,300.75	
10-Sep-2019	2,314.75	33,615.50	2,314.75	33,615.50	
11-Sep-2019	3,467.75	37,083.25	3,467.75	37,083.25	
12-Sep-2019	3,635.75	40,719.00	3,635.75	40,719.00	
13-Sep-2019	3,508.25	44,227.25	3,508.25	44,227.25	
14-Sep-2019	3,592.00	47,819.25	3,592.00	47,819.25	
15-Sep-2019	3,552.50	51,371.75	3,552.50	51,371.75	
16-Sep-2019	3,056.50	54,428.25	3,056.50	54,428.25	
17-Sep-2019	3,221.00	57,649.25	3,221.00	57,649.25	
18-Sep-2019	3,204.50	60,853.75	3,204.50	60,853.75	
19-Sep-2019	3,106.75	63,960.50	3,106.75	63,960.50	
20-Sep-2019	3,232.75	67,193.25	3,232.75	67,193.25	
21-Sep-2019	3,873.75	71,067.00	3,873.75	71,067.00	
22-Sep-2019	3,681.25	74,748.25	3,681.25	74,748.25	
23-Sep-2019	2,022.50	76,770.75	2,022.50	76,770.75	
24-Sep-2019	2,466.00	79,236.75	2,466.00	79,236.75	
25-Sep-2019	2,912.25	82,149.00	2,912.25	82,149.00	
26-Sep-2019	2,354.00	84,503.00	2,354.00	84,503.00	
27-Sep-2019	1,635.25	86,138.25	1,635.25	86,138.25	
28-Sep-2019	675.00	86,813.25	675.00	86,813.25	
29-Sep-2019	1,120.50	87,933.75	1,120.50	87,933.75	
30-Sep-2019	201.50	88,135.25	201.50	88,135.25	

less Difference in Water Content:	4873.75
Less Out of Seam dilution:	2460.04
Water treatment plant coal	0
Output (tons) measured by Belt	80,801.46
Tonnes mined in DARR	0
Net Output after removing DARR	80,801.46

Barapukuria Coal Mine Daywise Data Graph for September 2019



আসুন, যানবাহনসমূহকে অটোগ্যাসে রূপান্তর করি...

জাতীয় সম্পদ প্রাকৃতিক গ্যাস সাশ্রয় করি...

facebook

"Energy misused, cannot be excused"

আমাদের ঘরে যদি এখনো কয়েল স্টার্টার যুক্ত টিউবলাইট থেকে থাকে, আসুন আজই LED টিউবলাইট দ্বারা প্রতিস্থাপন করি।

HYDROCARBON UNIT ON FACEBOOK

“আসুন আমাদের জাতীয় সম্পদ প্রাকৃতিক গ্যাস সাশ্রয় করি”

১। **LPG** ব্যবহার করুন..

অবৈধ গ্যাস সংযোগ থেকে বিরত থাকুন

২। **CNG** নয়, অকটেন দিয়ে গাড়ি চালান...

গাড়ির ইঞ্জিনের আয়ুষ্কাল বাড়ান

চলুন আজই যানবাহনসমূহ AUTO GAS (LPG) এ রূপান্তর করি...

- * CNG এর তুলনায় LPG কনভারশনে ৫০% কম খরচ হয়
- * ৩-৫ মিনিটে ট্যাংকে ফুয়েল ভর্তি হয়, লম্বা লাইনে দাঁড়িয়ে অপেক্ষা করার প্রয়োজন পরে না
- * CNG এর তুলনায় সিলিন্ডারে জায়গা, ওজন ও প্রেশার কম দরকার
- * রক্ষণাবেক্ষণের খরচ কম
- * পেট্রলের তুলনায় AUTO GAS -এ খরচ প্রায় ৫০% কম
- * গ্যাসোলিন ও ডিজেলের তুলনায় নিঃসরণ কম

Hydrocarbon Unit

Energy & Mineral Resources Division
Ministry of Power, Energy & Mineral Resources
153, Pioneer Road
Segunbagicha, Dhaka-1000
www.hcuro.gov.bd