

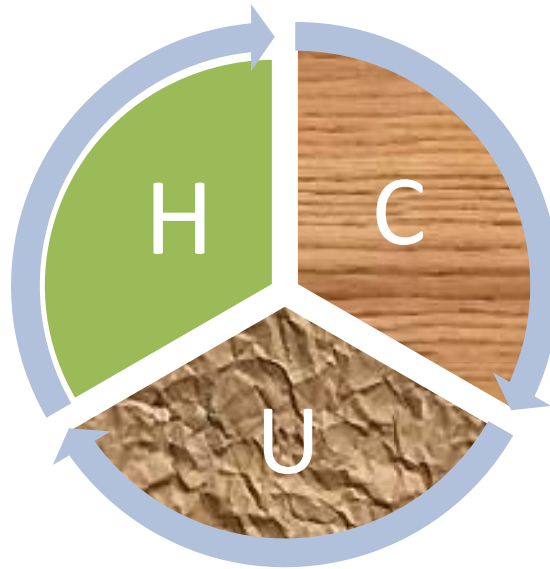


# HYDROCARBON UNIT

Energy and Mineral Resources Division

## Gas and Coal Reserve & Production

July 2019



## Gas Reserve & Production at a glance

Gas Initially in Place (GIIP)	:	35,796.19 Bcf
Recoverable (2P)	:	28,685.40 Bcf
Cumulative Production as of July 2019	:	17,007.98 Bcf
Remaining Reserve up to July 2019	:	11,677.42 Bcf
Gas Production in July 2019	:	79.86 Bcf
National Oil Company (NOC's) production in July 2019	:	30.20 Bcf
International Oil Company (IOC's) production in July 2019	:	49.66 Bcf
No. of National Oil Company (NOC's) in July 2019	:	3 (BGFCL, BAPEX, SGFL)
No. of International Oil Company (IOC's) in July 2019	:	2 (Chevron, Tullow)
Total gas fields of National Oil Company(NOC) in July 2019	:	21
Total gas fields of International Oil Company(IOC) in July 2019	:	5
Total gas wells of National Oil Company(NOC) in July 2019	:	116
Total gas wells of International Oil Company(IOC) in July 2019	:	60
No. of National Oil Company (NOC's) gas production well in July 2019	:	70
No. of International Oil Company (IOC's) gas production well in July 2019	:	42
No. of National Oil company(NOC's) suspended well in July 2019	:	46
No. of International Oil company(IOC's) suspended well in July 2019	:	18
Total LNG Import in July 2019	:	16.50 Bcf
Cumulative LNG Import from August 2018	:	132.39 Bcf

## Executive Summary of July 2019

Total gas and condensate Production in July 2019 were 79.86 Bcf and 345,954.74 Bbl. In the previous month i.e. June 2019, gas and condensate production was 71.84 Bcf and 281,125.77 Bbl and in the same month of the previous year i.e. July 2018, total gas and condensate production was 84.80 Bcf and 357,601.85 Bbl respectively. The National Oil Companies (NOC's) and International Oil Companies (IOC's) Produced 28.77 Bcf and 43.07 Bcf gas respectively in July 2019. During the previous month i.e. June 2019 gas production by the National Oil Companies (NOC's) and International Oil Companies (IOC's) were 30.20 Bcf and 49.66 Bcf respectively. In the month of July 2019 Bibiyana gas field Produced 39.77 Bcf gas and it ranked top among the gas producers. It is noted that Bibiyana gas field Produced 34.31 Bcf in June 2019. Average production from the field during the month of July 2019 was 1283 Mmcfd.

During the month of July 2019 total production of condensate was 345,954.74 Bbl compared to 281,125.77 Bbl in the previous month i.e. June 2019. Bibiyana gas field Produced 271,370 Bbl condensate and ranked top while Jalalabad ranked 2<sup>nd</sup> by producing 26,311.32 Bbl.

In the month of July 2019 total coal production was 113,008.82 Ton. In the previous month i.e. June 2019 total coal production was 129,341.70 Ton. It indicates that 16,332.88 Ton more Coal was produced compared to previous month.

Total LNG import in July 2019 was 16.50 Bcf. As a result, cumulative LNG import stands on 132.39 Bcf from August 2018.

## **Table of Contents**

<b>Gas Report</b>	<b>Page No.</b>
Summary	1
summary of Reserve and Production	2
Production comparison between June 2019 & July 2019	3
Production per well & production reserve ratio	4
Monthly Production by Fields & Wells up to July 2019	5-12
Monthly Condensate Production by Fields up to July 2019	13-14
Monthly Water Production by Fields from July 2019	15-16
Conditions of Field and Well up to July 2019	17-21
<b>Chart</b>	
Well-wise Production of All fields in 2017-18	22
Reserve, Production and Remaining Reserve as of July 2019	23
Daily Average Gas Production from January 2012 to July 2019	24
Field wise Daily Average Production as of July 2019	25
Well wise Daily Average Production-BGFCL as of July 2019	26
Well wise Daily Average Production-BAPEX and SGFL, July 2019	27
Well wise Daily Average Production-IOC and JVA, July 2019	28
Comparison of Field wise Daily Avg Gas Production between June 19 & July 19	29
Daily Average Production by Operator, July 2019	30
Comparison of Operator wise daily avg Production between June 19 & July 19	31
Daily Average Production – National vs IOC’s, July 2019	32
Comparison of daily avg Gas Production- National vs IOC’s between June 19 & July 19	33
Daily Average Production IOC’s and JVA, July 2019	34
Monthly Condensate Production, July 2019	35
<b>Coal Report</b>	
Summary	36-37
Barapukuria Coal Mine-MPM and P Contract (BCMCL)	38
Barapukuria Coal Mine Day wise Data Graph for July 2019	39

## Summary of Reserve, Production & Import As of 31 July 2019

<b>Gas Initially Place (Proven + Probable)</b>	<b>35,796.19 Bcf</b>	<b>35.80 Tcf</b>
<b>Recoverable (Proven + Probable)</b>	<b>28,685.40 Bcf</b>	<b>28.69 Tcf</b>
<b>Gas Production in July 2019</b>	<b>79.86 Bcf</b>	<b>0.08 Tcf</b>
<b>Cumulative Gas Production as of July 2019</b>	<b>17,007.98 Bcf</b>	<b>17.01 Tcf</b>
<b>Remaining Reserve</b>	<b>11,677.42 Bcf</b>	<b>11.68 Tcf</b>

*NOTE: Reserve figure based on "Updated Report on Bangladesh Gas Reserve Estimation 2010", prepared by Gustavson Associates LLC, USA*

<b>Total LNG Import in July 2019</b>	<b>16.50 Bcf</b>	<b>0.02 Tcf</b>
<b>Cumulative LNG Import from August 2018</b>	<b>132.39 Bcf</b>	<b>0.13 Tcf</b>

# Summary of Reserve and Production

(As of July 2019)

Gas Bcf



SI No.	Field	2P	GIIP	2P Reserve	Gas Prod. In July '19	Cum. Gas Production	Remaining Reserve	Cum. Condensate Production
1	Begumganj		47.0	33.0	0.2	2.8	30.2	1
2	Shahbazpur		415.0	261.0	1.7	69.5	191.5	7
3	Semutang		654.0	318.0	0.0	13.2	304.8	5
4	Fenchuganj		483.0	329.0	0.2	159.7	169.3	116
5	Salda Nadi		393.0	275.0	0.2	92.1	182.9	58
6	Srikail*		230.0	161.0	1.0	88.5	72.5	149
7	Sundalpur *		62.2	50.2	0.2	13.5	36.7	0
8	Rupganj		48.0	33.6	0.0	0.7	32.9	1
<b>Bapex</b>			<b>2,332.2</b>	<b>1,460.8</b>	<b>3.5</b>	<b>439.9</b>	<b>1,020.9</b>	<b>338</b>
9	Meghna		122.0	101.0	0.3	71.1	29.9	112
10	Narshingdi		405.0	345.0	0.4	205.3	139.7	426
11	Kamta		72.0	50.0	0.0	21.1	28.9	4
12	Habiganj		3,981.0	2,787.0	5.9	2,471.9	315.1	134
13	Bakhrabad		1,825.0	1,387.0	1.3	819.2	567.8	1,024
14	Titas		9,039.0	7,582.0	14.6	4,754.6	2,827.4	5,307
<b>BGFCL</b>			<b>15,444.0</b>	<b>12,252.0</b>	<b>22.5</b>	<b>8,343.2</b>	<b>3,908.8</b>	<b>7,007</b>
15	Sangu		976.0	771.0	0.0	489.5	281.5	37
<b>Santos/Cairn</b>			<b>976.0</b>	<b>771.0</b>	<b>0.0</b>	<b>489.5</b>	<b>281.5</b>	<b>37</b>
16	Bibiyana		5,321.0	4,532.0	39.8	3,861.2	670.8	22,995
17	Moulavi Bazar		630.0	494.0	0.5	325.6	168.4	118
18	Jalalabad**		1,346.0	1,346.0	6.7	1,324.1	21.9	10,321
<b>Chevron</b>			<b>7,297.0</b>	<b>6,372.0</b>	<b>47.0</b>	<b>5,510.9</b>	<b>861.1</b>	<b>33,434</b>
19	Feni		185.0	130.0	0.0	63.0	67.0	110
<b>Niko</b>			<b>185.0</b>	<b>129.6</b>		<b>63.0</b>	<b>66.6</b>	<b>110</b>
20	Kailas Tila		3,463.0	2,880.0	1.8	739.7	2,140.3	7,893
21	Sylhet		580.0	408.0	0.1	215.1	192.9	802
22	Rashidpur		3,887.0	3,134.0	1.5	638.2	2,495.8	785
23	Chattak		677.0	474.0	0.0	25.8	448.2	4
24	Beani Bazar		225.0	137.0	0.3	97.0	40.0	1,597
<b>SGFL</b>			<b>8,832.0</b>	<b>7,033.0</b>	<b>3.7</b>	<b>1,715.9</b>	<b>5,317.1</b>	<b>11,080</b>
25	Bangura		730.0	621.0	3.2	445.5	175.5	1,126
<b>Tullow</b>			<b>730.0</b>	<b>621.0</b>	<b>3.2</b>	<b>445.5</b>	<b>175.5</b>	<b>1,126</b>
26	Kutubdia		65.0	46.0	0.0	0.0	46.0	0
<b>Total</b>			<b>35,796.2</b>	<b>28,685.4</b>	<b>79.86</b>	<b>17,008.0</b>	<b>11,677.4</b>	<b>53,131</b>

\* Preliminary reserve estimated by BAPEX

\*\* 2P reserve estimation by Petrobangla has crossed the limit. So 2P reserve is estimated as GIIP reserve now.

## Production comparison between June'19 & July'19

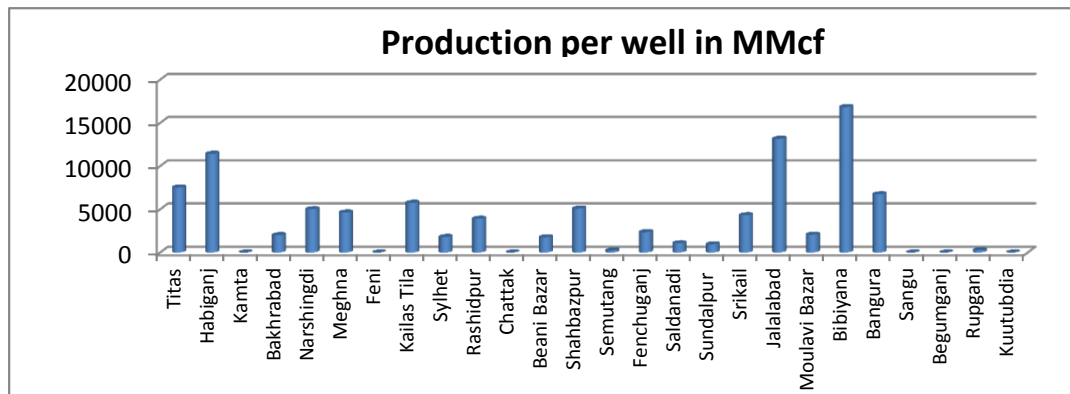


SI No.	Field	Gas Prod. (MMcf) in June'19	Daily Avg. (MMcfd) in June'19	Gas Prod. (MMcf) in July'19	Daily Avg. (MMcfd) in July'19
1	Begumganj	170	6	177	6
2	Shahbazpur	1862	62	1687	54
3	Semutang	22	1	23	1
4	Fenchuganj	154	5	201	6
5	Salda Nadi	123	4	194	6
6	Srikail	1001	33	1032	33
7	Sundalpur	207	7	218	7
8	Rupganj	0	0	0	0
<b>Bapex</b>		<b>3539</b>	<b>118</b>	<b>3532</b>	<b>114</b>
9	Meghna	272	9	257	8
10	Narshingdi	780	26	376	12
11	Kamta	0	0	0	0
12	Habiganj	5750	192	5920	191
13	Bakhrabad	1229	41	1304	42
14	Titas	13294	443	14604	471
<b>BGFCL</b>		<b>21326</b>	<b>711</b>	<b>22461</b>	<b>725</b>
15	Sangu	0	0	0	0
<b>Santos/Cairn</b>		<b>0</b>	<b>0</b>	<b>0</b>	<b>0</b>
16	Bibiyana	34306	1144	39773	1283
17	Moulavi Bazar	301	10	483	16
18	Jalalabad	6029	201	6695	216
<b>Chevron</b>		<b>40636</b>	<b>1355</b>	<b>46952</b>	<b>1515</b>
19	Feni	0	0	0	0
<b>Niko</b>		<b>0</b>	<b>0</b>	<b>0</b>	<b>0</b>
20	Kailas Tila	1783	59	1841	59
21	Sylhet	111	4	115	4
22	Rashidpur	1454	48	1501	48
23	Chattak	0	0	0	0
24	Beani Bazar	259	9	266	9
<b>SGFL</b>		<b>3608</b>	<b>120</b>	<b>3723</b>	<b>120</b>
25	Bangura	2732	91	3191	103
<b>Tullow</b>		<b>2732</b>	<b>91</b>	<b>3191</b>	<b>103</b>
26	Kutubdia	0	0	0	0
		<b>0</b>	<b>0</b>	<b>0</b>	<b>0</b>
<b>Total</b>		<b>71840</b>	<b>2395</b>	<b>79859</b>	<b>2576</b>

## Production per well & production reserve ratio



	No of well	Total 2p- Recoverable	2017-18 production	production per well mmcf	production reserve ratio
Titas	26	7582	195.42	7516.15	0.026
Habiganj	7	2787	79.9	11414.29	0.029
Kamta	0	50	0	0.00	0.000
Bakhrabad	6	1387	12.02	2003.33	0.009
Narshingdi	2	345	10.02	5010.00	0.029
Meghna	1	101	4.62	4620.00	0.046
Feni	0	130	0	0.00	0.000
Kailas Tila	4	2880	22.96	5740.00	0.008
Sylhet	1	408	1.79	1790.00	0.004
Rashidpur	5	3134	19.51	3902.00	0.006
Chattak	0	474	0	0.00	0.000
Beani Bazar	2	137	3.5	1750.00	0.026
Shahbazpur	3	261	15.26	5086.67	0.058
Semutang	2	318	0.46	230.00	0.001
Fenchuganj	2	329	4.7	2350.00	0.014
Saldanadi	1	275	1.06	1060.00	0.004
Sundalpur	1	50.2	0.94	940.00	0.019
Srikail	3	161	12.93	4310.00	0.080
Jalalabad	7	1346	92.09	13155.71	0.068
Moulavi Bazar	6	494	12.34	2056.67	0.025
Bibiyana	26	4532	437.33	16820.38	0.096
Bangura	5	621	33.67	6734.00	0.054
Sangu	0	771	0	0.00	0.000
Begumganj	0	33	0	0.00	0.000
Rupganj	1	33.6	0.25	250.00	0.007
Kuutubdia	0	46	0	0.00	0.000
<b>Total</b>	<b>111</b>	<b>28685.8</b>	<b>960.77</b>	<b>8655.59</b>	<b>0.033</b>





## Monthly Production by Field and Well upto July- 2019



**HYDROCARBON UNIT**  
Energy & Mineral Resources Division

Figu

Well	Jan	Feb	Mar	Apr	May	Jun	Jul	Aug	Sep	Oct	Nov	Dec	Total	Cumulative	2018	2017
<b>Field : Bakharabad</b>																
BKB-1	0	0	0	0	243	448	461						1,151	142,318	0	0
BKB-2	34	32	37	36	38	34	29						240	86,811	445	543
BKB-3	154	151	154	152	149	142	151						1,054	161,899	1,989	2,249
BKB-4	0	0	0	0	0	0	0						0	55,872		
BKB-5	155	140	154	146	141	140	145						1,021	59,833	1,822	1,847
BKB-6	0	0	0	0	0	0	0						0	50,069	0	
BKB-7	0	0	0		0	0	0						0	107,750	0	0
BKB-8	158	170	214	230	214	206	237						1,428	127,689	2,017	3,462
BKB-9	251	229	248	242	215	170	189						1,545	22,667	3,332	3,637
BKB-10	98	84	91	89	94	90	93						639	4,312	1,297	1,453
<b>Field Total:</b>	<b>852</b>	<b>807</b>	<b>898</b>	<b>894</b>	<b>1,094</b>	<b>1,229</b>	<b>1304</b>	<b>0</b>	<b>0</b>	<b>0</b>	<b>0</b>	<b>0</b>	<b>7,078</b>	<b>819,220</b>	<b>10,903</b>	<b>13,190</b>
<b>Daily Avg.(mmscfd)</b>	27	29	29	30	35	41	42	0	0	0	0	0	33		30	36
<b>Field : Bangura</b>																
Bangura-1	384	343	377	363	368	354	347						2,537	91,791	4,615	4,914
Bangura-2	504	437	472	469	458	442	451						3,233	82,771	6,802	7,837
Bangura-3	601	516	563	544	544	470	542						3,780	100,507	7,265	8,662
Bangura-6	343	306	319	320	312	268	311						2,180	11,127	4,847	4,100
Bangura-5	1,212	1,087	1,200	1,153	1,182	1,197	1,540						8,570	159,312	8,410	9,699
<b>Field Total:</b>	<b>3,044</b>	<b>2,690</b>	<b>2,931</b>	<b>2,848</b>	<b>2,864</b>	<b>2,732</b>	<b>3191</b>	<b>0</b>	<b>0</b>	<b>0</b>	<b>0</b>	<b>0</b>	<b>20,300</b>	<b>445,508</b>	<b>31,940</b>	<b>35,212</b>
<b>Daily Avg.(mmscfd)</b>	98	96	95	95	92	91	103	0	0	0	0	0	96		88	96
<b>Field : Beani Bazar</b>																
BB-1	0	0	0	0	0	0	0	0	0	0	0	0	0	35,481	0	1,023
BB-2	274	239	266	256	269	259	266						1,829	61,566	3,276	3,282
<b>Field Total:</b>	<b>274</b>	<b>239</b>	<b>266</b>	<b>256</b>	<b>269</b>	<b>259</b>	<b>266</b>	<b>0</b>	<b>0</b>	<b>0</b>	<b>0</b>	<b>0</b>	<b>1,829</b>	<b>97,046</b>	<b>3,276</b>	<b>4,306</b>
<b>Daily Avg.(mmscfd)</b>	9	9	9	9	9	9	9	0	0	0	0	0	9		9	12
<b>Field : Bibiyana</b>																
BY-1	2,554	2,149	2,272	2493	2,668	1,827	2452						16,414	384,299	21,743	35,595
BY-2	1,632	1,327	1,573	1544	1,560	1,363	1451						10,451	284,878	21,388	23,957
BY-3	737	608	567	549	526	519	218						3,723	238,993	6,249	9,904
BY-4	1,865	1,587	1,790	1921	2,125	1,896	2227						13,411	193,949	28,559	6,571
BY-5	762	698	718	297	668	527	514						4,185	176,152	6,131	8,117
BY-6	792	617	771	809	937	623	736						5,283	226,779	11,057	11,879
BY-7	2,548	2,171	2,391	2190	2,322	1,904	2325						15,851	260,434	23,155	32,874
BY-8	768	713	753	777	761	802	815						5,390	139,633	8,921	12,486
BY-9	553	482	359	476	484	488	454						3,297	127,914	4,093	6,247

## Monthly Production by Field and Well upto July- 2019



**HYDROCARBON UNIT**  
Energy & Mineral Resources Division

Figu

Well	Jan	Feb	Mar	Apr	May	Jun	Jul	Aug	Sep	Oct	Nov	Dec	Total	Cumulative	2018	2017
BY-10	2,106	1,752	2,357	2244	2,233	1,901	2227						14,819	349,817	30,954	32,967
BY-11	797	626	657	818	861	727	836						5,321	125,282	12,147	6,813
BY-12	2,162	2,177	2,205	2245	2,280	2,173	2333						15,576	138,279	6,835	8,284
BY-13	959	569	880	798	950	905	963						6,024	78,983	13,171	11,842
BY-14	800	730	845	666	777	660	721						5,198	95,811	11,523	15,354
BY-15	1,829	1,420	1,646	1693	2,124	1,806	2051						12,569	109,490	24,295	19,111
BY-16	908	823	806	741	807	792	877						5,755	66,827	9,264	12,541
BY-17	1,794	1,176	1,440	1496	1,576	1,726	1770						10,977	88,849	17,603	15,412
BY-18	2,784	2,387	2,668	2541	2,546	2,204	2489						17,620	135,423	31,890	29,509
BY-19	1,761	2,275	2,368	2362	2,407	2,003	2354						15,530	47,608	8,144	9,859
BY-20	1,636	2,008	2,113	2176	1,384	1,106	1748						12,173	50,018	7,840	6,533
BY-21	634	531	656	671	719	649	723						4,582	39,806	9,670	13,246
BY-22	1,742	1,310	1,480	1517	1,833	1,403	1736						11,021	118,821	24,755	27,093
BY-23	2,261	1,781	2,212	2100	2,190	1,731	2144						14,419	66,466	32,043	15,333
BY-24	870	712	824	826	830	850	833						5,746	63,910	13,268	13,484
BY-25	2,070	2,145	2,340	2229	2,396	1,836	2308						15,324	120,504	28,306	30,331
BY-26	2,683	2,344	2,465	2318	2,524	1,885	2467						16,686	132,251	33,853	30,446
<b>Field Total:</b>	<b>40006</b>	<b>35117</b>	<b>39154</b>	<b>38499</b>	<b>40489</b>	<b>34306</b>	<b>39773</b>	<b>0</b>	<b>0</b>	<b>0</b>	<b>0</b>	<b>0</b>	<b>267,345</b>	<b>3,861,174</b>	<b>446,855</b>	<b>445,787</b>
<b>Daily Avg.(mmscfd)</b>	1291	1254	1263	1283	1306	1144	1283	0	0	0	0	0	1,261		1,224	1,221
<b>Field :</b>	<b>Chattak</b>															
Ch-1	Production Suspended													25,834		
<b>Field Total:</b>	<b>0</b>			<b>0</b>	<b>0</b>	<b>0</b>	<b>0</b>	<b>0</b>	<b>0</b>	<b>0</b>	<b>0</b>	<b>0</b>	<b>25,834</b>			
<b>Daily Avg.(mmscfd)</b>	0			0	0	0	0	0	0	0	0	0	0	0	0	0
<b>Field :</b>	<b>Fenchuganj</b>															
Fenchuganj-2	0	0	0	0	0	0	0						0	38,169	0	0
Fenchuganj-3	274	203	225	217	145	129	174						1,367	92,005	3,186	6,192
Fenchuganj-4	60	30	30	28	27	25	27						227	29,501	809	441
<b>Field Total:</b>	<b>334</b>	<b>234</b>	<b>255</b>	<b>245</b>	<b>172</b>	<b>154</b>	<b>201</b>	<b>0</b>	<b>0</b>	<b>0</b>	<b>0</b>	<b>0</b>	<b>1,594</b>	<b>159,674</b>	<b>3,994</b>	<b>6,633</b>
<b>Daily Avg.(mmscfd)</b>	11	8	8	8	6	5	6	0	0	0	0	0	8		11	18
<b>Field :</b>	<b>Feni</b>															
Feni-1	Production Suspended								0	0	34,214					
Feni-2	Production Suspended								0	0	6,119					
Feni-3	Production Suspended								0	0	2,176					

## Monthly Production by Field and Well upto July- 2019



**HYDROCARBON UNIT**  
Energy & Mineral Resources Division

Figu

Well	Jan	Feb	Mar	Apr	May	Jun	Jul	Aug	Sep	Oct	Nov	Dec	Total	Cumulative	2018	2017		
Feni-4	Production Suspended								0								14,386	
Feni-5	Production Suspended								0								6,127	
<b>Field Total:</b>														<b>63,023</b>				
<b>Daily Avg.(mmscfd)</b>																		
<b>Field :</b>	<b>Habiganj</b>																	
Hbj-1	429	375	414	379	369	331	338						2,634	280,741	2,207	0		
Hbj-2	0	0	0	0	0	0	0						0	275,704	0	0		
Hbj-3	1,105	952	986	925	954	861	890						6,674	383,832	13,155	13,151		
Hbj-4	1,105	952	986	925	954	861	890						6,674	378,290	13,155	13,151		
Hbj-5	798	711	776	746	770	725	767						5,294	302,968	9,497	9,497		
Hbj-6	461	413	459	447	461	435	460						3,138	165,347	5,487	5,491		
Hbj-7	1,211	1,090	1,233	1,191	1,228	1,160	1,197						8,310	261,429	14,533	14,565		
Hbj-8	0	0	0	0	0	0	0						0	11,023	0	0		
Hbj-9	0	0	0	0	0	0	0						0	52,652	0	0		
Hbj-10	969	870	925.3	893	921	833	838						6,250	259,382	13,928	14,058		
Hbj-11	697	623	619.27	598	617	544	539						4,237	100,545	9,579	10,398		
<b>Field Total:</b>	<b>6,776</b>	<b>5,985</b>	<b>6,400</b>	<b>6,104</b>	<b>6,276</b>	<b>5,750</b>	<b>5,920</b>	<b>0</b>	<b>0</b>	<b>0</b>	<b>0</b>	<b>0</b>	<b>43,211</b>	<b>2,471,912</b>	<b>81,540</b>	<b>80,313</b>		
<b>Daily Avg.(mmscfd)</b>	219	214	206	203	202	192	191	0	0	0	0	0	204		223	220		
<b>Field :</b>	<b>Jalalabad</b>																	
JB-1	877	733	790	761	813	703	786						5,462	251,231	10,469	9,142		
JB-2	1,088	910	978	934	1,001	876	975						6,763	286,359	12,973	14,517		
JB-3	1,451	1,214	1,313	1,277	1,344	1,177	1,300						9,075	349,600	17,399	19,162		
JB-4	453	379	410	399	419	368	406						2,835	281,835	5,821	7,045		
JB-6	1,451	1,114	1,313	1,277	1,332	1,163	1,297						8,946	68,271	17,364	19,524		
JB-7	1,088	910	985	955	1,014	882	973						6,807	36,197	13,053	10,324		
JB-8	1,073	898	971	943	1,000	860	959						6,703	50,633	12,793	14,513		
<b>Field Total:</b>	<b>7,482</b>	<b>6,158</b>	<b>6,760</b>	<b>6,546</b>	<b>6,922</b>	<b>6,029</b>	<b>6,695</b>	<b>0</b>	<b>0</b>	<b>0</b>	<b>0</b>	<b>0</b>	<b>46,593</b>	<b>1,324,127</b>	<b>89,872</b>	<b>94,226</b>		
<b>Daily Avg.(mmscfd)</b>	241	220	218	218	223	201	216	0	0	0	0	0	220		246	258		
<b>Field :</b>	<b>Kailas Tila</b>																	
KTL-1	147	109	114	0	0	0	0						371	205,181	462	0		

## Monthly Production by Field and Well upto July- 2019



**HYDROCARBON UNIT**  
Energy & Mineral Resources Division

Figu

Well	Jan	Feb	Mar	Apr	May	Jun	Jul	Aug	Sep	Oct	Nov	Dec	Total	Cumulative	2018	2017
KTL-2	612	551	610	585	607	590	611						4,165	182,312	7,190	7,242
KTL-3	235	209	228	221	226	219	226						1,564	139,384	2,947	3,255
KTL-4	253	228	254	242	238	229	229						1,674	97,770	3,336	3,680
KTL-5	0	0	0	0	0	0	0						0	17,923	0	0
KTL-6	770	689	765	731	774	744	774						5,247	96,336	8,950	9,086
KTL-7	0	0	0	0	0	0	0						0	816	0	0
<b>Field Total:</b>	<b>2,017</b>	<b>1,787</b>	<b>1,971</b>	<b>1,779</b>	<b>1,846</b>	<b>1,783</b>	<b>1,841</b>	<b>0</b>	<b>0</b>	<b>0</b>	<b>0</b>	<b>0</b>	<b>13,022</b>	<b>739,721</b>	<b>22,886</b>	<b>23,263</b>
<b>Daily Avg.(mmscfd)</b>	65	64	64	59	60	59	59	0	0	0	0	0	61		63	64
<b>Field : Kamta</b>																
Kamta-1	Production Suspended													21,139		
<b>Field Total:</b>			0	0	0	0	0							21,139		
<b>Daily Avg.(mmscfd)</b>																
<b>Field : Meghna</b>																
M-1	372	308	314	302	293	272	257						2,119	71,093	4,538	4,625
<b>Field Total:</b>	<b>372</b>	<b>308</b>	<b>314</b>	<b>302</b>	<b>293</b>	<b>272</b>	<b>257</b>	<b>0</b>	<b>0</b>	<b>0</b>	<b>0</b>	<b>0</b>	<b>2,119</b>	<b>71,093</b>	<b>4,538</b>	<b>4,625</b>
<b>Daily Avg.(mmscfd)</b>	12	11	10	10	9	9	8	0	0	0	0	0	10		12	13
<b>Field : Moulavi Bazar</b>																
MV Bazar-2	121	79	72	62	58	29	23						444	54,482	2,302	2,866
MV Bazar-3	207	149	124	113	173	92	75						934	158,743	3,712	4,705
MV Bazar-4	159	102	67	60	54	26	83						550	58,618	3,103	3,945
MV Bazar-5	0	0	0	0	0	0	0							66		
MV Bazar-6	193	182	132	183	237	154	301						1,383	17,732	1,734	1,676
MV Bazar-7	1	1	0	0	0	0	0						3	5,646	21	152
MV Bazar-9	0	0	0	0	0	0	0						0	30,336	1	0
<b>Field Total:</b>	<b>682</b>	<b>511</b>	<b>396</b>	<b>418</b>	<b>523</b>	<b>301</b>	<b>483</b>	<b>0</b>	<b>0</b>	<b>0</b>	<b>0</b>	<b>0</b>	<b>3,315</b>	<b>325,622</b>	<b>10,872</b>	<b>13,345</b>
<b>Daily Avg.(mmscfd)</b>	22	18	13	14	17	10	16	0	0	0	0	0	16		30	37
<b>Field : Narshingdi</b>																
N-1	530	479	530	535	566	478	58						3,175	147,770	6,181	6,279
N-2	314	278	313	317	319	303	318						2,162	57,532	3,705	3,962
<b>Field Total:</b>	<b>844</b>	<b>757</b>	<b>843</b>	<b>852</b>	<b>885</b>	<b>780</b>	<b>376</b>	<b>0</b>	<b>0</b>	<b>0</b>	<b>0</b>	<b>0</b>	<b>5,337</b>	<b>205,302</b>	<b>9,886</b>	<b>10,241</b>

## Monthly Production by Field and Well upto July- 2019



**HYDROCARBON UNIT**  
Energy & Mineral Resources Division

Figu

Well	Jan	Feb	Mar	Apr	May	Jun	Jul	Aug	Sep	Oct	Nov	Dec	Total	Cumulative	2018	2017
<b>Daily Avg.(mmscfd)</b>	27	27	27	28	29	26	12	0	0	0	0	0	25		27	28
<b>Field : Rashidpur</b>																
RP-1	542	491	530	513	537	513	536						3,662	170,725	6,505	6,625
RP-2	0	0	0	0	0	0	0						0	82,474		
RP-3	300	271	300	286	294	283	292						2,026	133,234	3,541	3,730
RP-4	267	239	262	243	237	223	231						1,703	129,598	3,227	3,516
RP-5	0	0	0	0	0	0	0						0	25,647		
RP-6	0	0	0	0	0	0	0						0	9,983	0	0
RP-7	173	155	163	149	143	138	142						1,064	65,389	2,096	2,225
RP-8	314	284	314	300	306	296	300						2,114	21,147	3,696	3,977
<b>Field Total:</b>	<b>1,597</b>	<b>1,439</b>	<b>1,569</b>	<b>1,491</b>	<b>1,517</b>	<b>1,454</b>	<b>1501</b>	<b>0</b>	<b>0</b>	<b>0</b>	<b>0</b>	<b>0</b>	<b>10,569</b>	<b>638,197</b>	<b>19,065</b>	<b>20,074</b>
<b>Daily Avg.(mmscfd)</b>	52	51	51	50	49	48	48	0	0	0	0	0	50		52	55
<b>Field : Salda Nadi</b>																
Salda-1	0	0	0	0	0	0	0						0	36,904	0	0
Salda-2	0	0	0	0	0	0	0						0	28,495	0	0
Salda-3	123	119	135	130	125	120	192						944	26,525	1,067	1,514
Salda-4	4	5	5	6	4	4	2						29	146	70	14
<b>Field Total:</b>	<b>127</b>	<b>124</b>	<b>140</b>	<b>136</b>	<b>128</b>	<b>123</b>	<b>194</b>	<b>0</b>	<b>0</b>	<b>0</b>	<b>0</b>	<b>0</b>	<b>974</b>	<b>92,070</b>	<b>1,137</b>	<b>1,527</b>
<b>Daily Avg.(mmscfd)</b>	4	4	5	5	4	4	6	0	0	0	0	0	5		3	4
<b>Field : Sangu</b>																
Sangu-1	0	0	0	0	0	0	0	0	0	0	0	0	0	116,191	0	0
Sangu-3z	0	0	0	0	0	0	0	0	0	0	0	0	0	131,796	0	0
Sangu-4	Production Suspended						0	0	0	0	0	0	0	87,280		
Sangu-5	Production Suspended						0	0	0	0	0	0	0	61,674		
Sangu-7	Production Suspended						0	0	0	0	0	0	0	18,202		
Sangu-8	Production Suspended						0	0	0	0	0	0	0	37,619		
Sangu-9	0	0	0	0	0	0	0	0	0	0	0	0	0	30,638	0	0
Sangu-10	Production Suspended						0	0	0	0	0	0	0			
Sangu-11	0	0	0	0	0	0	0	0	0	0	0	0	0	6,067	0	0
<b>Field Total:</b>	<b>0</b>	<b>0</b>	<b>0</b>	<b>0</b>	<b>0</b>	<b>0</b>	<b>0</b>	<b>0</b>	<b>0</b>	<b>0</b>	<b>0</b>	<b>0</b>	<b>0</b>	<b>489,467</b>	<b>0</b>	<b>0</b>

## Monthly Production by Field and Well upto July- 2019



**HYDROCARBON UNIT**  
Energy & Mineral Resources Division

Figu

Well	Jan	Feb	Mar	Apr	May	Jun	Jul	Aug	Sep	Oct	Nov	Dec	Total	Cumulative	2018	2017
<b>Daily Avg.(mmscfd)</b>	0	0	0	0	0	0	0	0	0	0	0	0	0		0	0
<b>Field : Semutang</b>																
Semutang-5	14	12	12	10	9	8	9						75	12,140	291	471
Semutang-6	7	11	14	14	14	14	14						88	1,043	84	66
<b>Field Total:</b>	<b>22</b>	<b>23</b>	<b>27</b>	<b>24</b>	<b>23</b>	<b>22</b>	<b>23</b>	<b>0</b>	<b>0</b>	<b>0</b>	<b>0</b>	<b>0</b>	<b>163</b>	<b>13,184</b>	<b>375</b>	<b>537</b>
<b>Daily Avg.(mmscfd)</b>	1	1	1	1	1	1	1	0	0	0	0	0	1		1	1
<b>Field : Shahbazpur</b>																
Shahbazpur-1	0	0	0	0	35	265	66						366	21,724	134	4,835
Shahbazpur-2	534	523	637	656	678	531	596						4,154	15,236	6,650	4,243
Shahbazpur-3	377	436	505	510	536	585	619						3,568	15,894	5,222	1,162
Shahbazpur-4	513	452	567	632	608	481	407						3,659	16,662	6,936	1,801
<b>Field Total:</b>	<b>1,424</b>	<b>1,411</b>	<b>1,709</b>	<b>1,797</b>	<b>1,857</b>	<b>1,862</b>	<b>1,687</b>	<b>0</b>	<b>0</b>	<b>0</b>	<b>0</b>	<b>0</b>	<b>11,747</b>	<b>69,517</b>	<b>18,943</b>	<b>12,041</b>
<b>Daily Avg.(mmscfd)</b>	46	50	55	60	60	62	54	0	0	0	0	0	55		52	33
<b>Field : Srikail</b>																
Srikail-2	442	417	461	443	452	432	446						3,093	41,037	5,154	5,384
Srikail-3	358	333	363	337	337	322	333						2,382	37,213	4,273	4,944
Srikail-4	276	256	277	272	261	248	254						1,843	10,288	2,971	3,439
<b>Field Total:</b>	<b>1,076</b>	<b>1,005</b>	<b>1,102</b>	<b>1,052</b>	<b>1,050</b>	<b>1,001</b>	<b>1,032</b>	<b>0</b>	<b>0</b>	<b>0</b>	<b>0</b>	<b>0</b>	<b>7,318</b>	<b>88,538</b>	<b>12,398</b>	<b>13,767</b>
<b>Daily Avg.(mmscfd)</b>	35	36	36	35	34	33	33	0	0	0	0	0	35		34	38
<b>Field : Sundalpur</b>																
Sundalpur -1	0	0	0		0	0	0						0	9,809	0	0
Sundalpur -2	220	200	220	212	218	207	218						1,496	3,672	2,176	0
<b>Field Total:</b>	<b>220</b>	<b>200</b>	<b>220</b>	<b>212</b>	<b>218</b>	<b>207</b>	<b>218</b>	<b>0</b>	<b>0</b>	<b>0</b>	<b>0</b>	<b>0</b>	<b>1,496</b>	<b>13,481</b>	<b>2,176</b>	<b>0</b>
<b>Daily Avg.(mmscfd)</b>	7	7	7	7	7	7	7	0	0	0	0	0	7		6	0
<b>Field : Sylhet</b>																
Sylhet-3	Production Suspended												89,032			
Sylhet-6	Production Suspended												91,748			
Sylhet-7	131	108	118	113	117	111	115						813	27,803	1,622	2,061
Surma-1	0	0	0	0	0	0	0						0	6,528	0	249

## Monthly Production by Field and Well upto July- 2019



**HYDROCARBON UNIT**  
Energy & Mineral Resources Division

Figu

Well	Jan	Feb	Mar	Apr	May	Jun	Jul	Aug	Sep	Oct	Nov	Dec	Total	Cumulative	2018	2017
<b>Field Total:</b>	<b>131</b>	<b>108</b>	<b>118</b>	<b>113</b>	<b>117</b>	<b>111</b>	<b>115</b>	<b>0</b>	<b>0</b>	<b>0</b>	<b>0</b>	<b>0</b>	<b>813</b>	<b>215,111</b>	<b>1,622</b>	<b>2,309</b>
<b>Daily Avg.(mmscfd)</b>	<b>4</b>	<b>4</b>	<b>4</b>	<b>4</b>	<b>4</b>	<b>4</b>	<b>4</b>	<b>0</b>	<b>0</b>	<b>0</b>	<b>0</b>	<b>0</b>	<b>4</b>		<b>4</b>	<b>6</b>
<b>Field :</b>	<b>Titas</b>															
Titas-1	675	537	559	566	571	521	556						3,985	443,614	8,516	7,897
Titas-2	962	865	939	906	968	903	918						6,460	441,965	11,522	11,506
Titas-3	0	0	0	0	0	0	0	0	0	0	0	0	0	314,888	0	
Titas-4	994	861	960	923	972	900	937						6,548	376,999	11,726	11,798
Titas-5	1,020	899	997	968	1,015	975	1030						6,904	435,156	11,838	11,869
Titas-6	978	878	958	964	142	739	834						5,492	368,620	12,030	12,029
Titas-7	947	824	977	891	948	740	862						6,188	351,053	11,919	11,707
Titas-8	510	426	498	497	567	433	493						3,424	276,060	6,154	6,889
Titas-9	539	475	517	518	583	548	570						3,750	280,240	6,706	8,246
Titas-10	647	565	636	619	702	671	716						4,555	203,556	7,612	7,431
Titas-11	855	762	867	830	858	282	514						4,968	251,869	9,998	10,276
Titas-12	482	422	483	463	476	305	415						3,046	103,821	5,160	5,168
Titas-13	580	513	576	552	567	501	525						3,815	193,907	6,952	7,879
Titas-14	576	498	566	536	552	412	433						3,571	153,557	7,203	8,309
Titas-15	460	412	434	405	420	402	416						2,949	142,462	5,543	7,973
Titas-16	669	592	646	612	635	569	601						4,324	150,669	8,605	10,060
Titas-17	515	431	507	475	514	443	508						3,394	42,896	6,335	7,011
Titas-18	546	458	535	504	540	464	537						3,583	41,589	6,664	7,168
Titas-19	507	450	489	458	471	441	471						3,288	31,336	6,115	6,106
Titas-20	305	277	310	294	306	292	292						2,076	20,904	3,914	3,635
Titas-21	253	232	258	249	263	250	256						1,760	10,992	2,995	2,800
Titas-22	309	284	296	231	269	265	275						1,928	26,346	4,158	4,336
Titas-27	487	404	478	455	479	418	496						3,217	32,056	5,827	6,136
Titas-23	483	436	489	477	496	459	474						3,314	13,319	5,594	4,410
Titas-24	202	185	207	196	195	188	204						1,376	6,368	2,709	2,283
Titas-25	528	476	528	508	519	472	500						3,532	15,747	6,324	5,622
Titas-26	809	733	801	731	783	702	769						5,329	24,594	9,672	9,210
<b>Field Total:</b>	<b>15,838</b>	<b>13,893</b>	<b>15,509</b>	<b>14,828</b>	<b>14,810</b>	<b>13,294</b>	<b>14,604</b>	<b>0</b>	<b>0</b>	<b>0</b>	<b>0</b>	<b>0</b>	<b>102,776</b>	<b>4,754,583</b>	<b>191,792</b>	<b>197,756</b>
<b>Daily Avg.(mmscfd)</b>	<b>511</b>	<b>496</b>	<b>500</b>	<b>494</b>	<b>478</b>	<b>443</b>	<b>471</b>	<b>0</b>	<b>0</b>	<b>0</b>	<b>0</b>	<b>0</b>	<b>485</b>		<b>525</b>	<b>542</b>

## Monthly Production by Field and Well upto July- 2019



**HYDROCARBON UNIT**  
Energy & Mineral Resources Division

Figu

Well	Jan	Feb	Mar	Apr	May	Jun	Jul	Aug	Sep	Oct	Nov	Dec	Total	Cumulative	2018	2017
<b>Field : Begumganj</b>																
<b>Begumganj-3</b>	176	179	200	197	194	170	177						1,292	2,762	593	0
<b>Field Total:</b>	<b>176</b>	<b>179</b>	<b>200</b>	<b>197</b>	<b>194</b>	<b>170</b>	<b>177</b>	<b>0</b>	<b>0</b>	<b>0</b>	<b>0</b>	<b>0</b>	<b>1,292</b>	<b>2,762</b>	<b>593</b>	<b>0</b>
<b>Daily Avg.(mmscfd)</b>	6	6	6	7	6	6	6	0	0	0	0	0	6		2	0
<b>Field : Rupganj</b>																
<b>Rupganj-1</b>	0	0	0										0	679	0	679
<b>Field Total:</b>	<b>0</b>	<b>0</b>	<b>0</b>	<b>0</b>	<b>0</b>	<b>0</b>	<b>0</b>	<b>0</b>	<b>0</b>	<b>0</b>	<b>0</b>	<b>0</b>	<b>0</b>	<b>679</b>	<b>0</b>	<b>679</b>
<b>Daily Avg.(mmscfd)</b>	0	0	0	0	0	0	0	0	0	0	0	0	0		0	2
<b>Grand Total (in Bcf)</b>	83.29	72.98	80.78	78.59	81.55	71.84	80	0.00	0.00	0.00	0.00	0.00	548.9	17,007.98	964.7	979.8
<b>Daily Avg.(mmscfd)</b>	2,687	2,606	2,606	2,620	2,631	2,395	2576	0	0	0	0	0	2,589		2,643	2,684



## Monthly Condensate Production by Fields upto July 2019



Field Name	Jan-19	Feb-19	Mar-19	Apr-19	May-19	Jun-19	Jul-19	Aug-19	Sep-19	Oct-19	Nov-19	Dec-19	Total	Cumulative	2018	2017	2016
														000' bbl			
Bakhrabad	475	462	432	402	550	706	786						3,813	1,024	5,022	6,173	7,091
Daily Avg.	15	17	14	13	18	24	25	0	0	0	0	0	18		14	17	229
Bangura	9,547	8,321	8,755	8,380	8,381	7,905	9,092						60,381	1,126	94,737	103,198	103,416
Daily Avg.	308	297	282	279	270	264	293	0	0	0	0	0	285		260	283	3,336
Beani Bazar	4,207	3,945	4,525	4,262	4,394	4,198	4,268						29,797	1,597	51,187	68,202	56,146
Daily Avg.	136	141	146	142	142	140	138	0	0	0	0	0	141		140	187	1,811
Bibiyana	286,489	247,882	275,825	268,384	277,796	213,400	271,370						1,841,146	22,995	3,267,318	3,283,757	3,291,906
Daily Avg.	9,242	8,853	8,898	8,946	8,961	7,113	8,754	0	0	0	0	0	8,685		8,952	8,997	106,191
Chattak	0	0	0	0	0	0	0	0	0	0	0	0	0	4	0		
Daily Avg.	0	0	0	0	0	0	0	0	0	0	0	0	0		0		
Fenchuganj	126	80	121	108	90	48	41						613	116	1,625	2,462	6,138
Daily Avg.	4	3	4	4	3	2	1	0	0	0	0	0	3		4	7	198
Feni	0	0	0	0	0	0	0	0	0	0	0	0	0	110	0	0	0
Daily Avg.	0	0	0	0	0	0	0	0	0	0	0	0	0		0	0	0
Habiganj	721	610	776	681	642	571	564						4,565	134	5,612	3,955	4,143
Daily Avg.	23	22	25	23	21	19	18	0	0	0	0	0	22		15	11	134
Jalalabad	29,901	23,874	25,898	25,716	26,805	23,241	26,311						181,746	10,321	367,160	437,070	528,191
Daily Avg.	965	853	835	857	865	775	849	0	0	0	0	0	857		1,006	1,197	17,038
Kailas Tila	17,562	17,085	16,738	16,259	1,545	13,773	15,381						98,342	7,893	189,620	203,979	223,169
Daily Avg.	567	610	540	542	50	459	496	0	0	0	0	0	464		520	559	7,199
Kamta	Production Suspended									0	0			4			
Daily Avg.										0	0			0	0	0	
Meghna	589	514	647	678	645	592	605						4,270	112	7,947	7,741	7,735
Daily Avg.	19	18	21	23	21	20	20	0	0	0	0	0	20		22	21	250
Moulavi Bazar	104	80	63	53	62	27	41						429	118	856	1,128	1,585
Daily Avg.	3	3	2	2	2	1	1	0	0	0	0	0	2		2	3	51

## Monthly Condensate Production by Fields upto July 2019



Field Name	Jan-19	Feb-19	Mar-19	Apr-19	May-19	Jun-19	Jul-19	Aug-19	Sep-19	Oct-19	Nov-19	Dec-19	Total	Cumulative	2018	2017	2016
													000' bbl				
Narshingdi	1,285	1,131	1,235	1,205	1,217	1,120	785						7,978	426	15,797	16,656	17,534
Daily Avg.	41	40	40	40	39	37	25	0	0	0	0	0	38		43	46	566
Rashidpur	1,213	1,038	1,083	1,069	1,084	1,542	1,602						8,630	785	14,393	10,723	14,938
Daily Avg.	39	37	35	36	35	51	52	0	0	0	0	0	41		39	29	482
Saldanadi	19	19	21	20	19	17	60						174	58	137	225	386
Daily Avg.	1	1	1	1	1	1	2	0	0	0	0	0	1		0	1	12
Sangu	0	0	0	0	0	0	0	0	0	0	0	0	0	37	0	0	0
Daily Avg.	0	0	0	0	0	0	0	0	0	0	0	0	0		0	0	0
Semutang	0	0	0	0	0	0	0						0	5	26	99	272
Daily Avg.	0	0	0	0	0	0	0	0	0	0	0	0	0		0	0	9
Shahbazpur	187	148	211	207	207	27	193						1,179	7	2,488	1,791	839
Daily Avg.	6	5	7	7	7	1	6	0	0	0	0	0	6		7	5	27
Srikail	3,226	2,920	3,143	2,913	2,950	2,796	2,834						20,781	149	33,765	37,879	21,075
Daily Avg.	104	104	101	97	95	93	91	0	0	0	0	0	98		93	104	680
Sundalpur	10	9	10	10	9	24	40						112	0	121	0	0
Daily Avg.	0	0	0	0	0	1	1	0	0	0	0	0	1		0	0	0
Sylhet	969	864	981	881	901	845	860						6,303	802	10,277	15,593	20,532
Daily Avg.	31	31	32	29	29	28	28	0	0	0	0	0	30		28	43	662
Titas	13,655	11,331	12,573	12,503	12,163	10,239	11,065						83,529	5,307	159,803	154,262	133,133
Daily Avg.	440	405	406	417	392	341	357	0	0	0	0	0	394		438	423	4,295
Begumganj	60	60	57	63	58	54	57						409	1	201	0	0
Daily Avg.	2	0	0	0	0	2	2	0	0	0	0	0	2		1	0	0
Rupganj	0	0	0	0	0	0	0						0	1	0	1,133	
Daily Avg.	0	0	0	0	0	0	0	0	0	0	0	0	0		0	3	
<b>Total (000'bbl)</b>	<b>370</b>	<b>320</b>	<b>353</b>	<b>344</b>	<b>340</b>	<b>281</b>	<b>346</b>	<b>0</b>	<b>0</b>	<b>0</b>	<b>0</b>	<b>0</b>	<b>2,354</b>	<b>53,131</b>	<b>4,228</b>	<b>4,356</b>	<b>4,438</b>
<b>Daily Avg. (000'bbl)</b>	<b>11.9</b>	<b>11.4</b>	<b>11.4</b>	<b>11.5</b>	<b>11.0</b>	<b>9</b>	<b>11.2</b>	<b>0.0</b>	<b>0.0</b>	<b>0.0</b>	<b>0</b>	<b>0</b>	<b>11</b>		<b>11.6</b>	<b>11.9</b>	<b>12.2</b>

Note: Historical condensate figure of Sangu available from 2006. Sylhet available from August 1964

## Monthly Water Production by Fields in July 2019



Field Name	Jan-19	Feb-19	Mar-19	Apr-19	May-19	Jun-19	Jul-19	Aug-19	Sep-19	Oct-19	Nov-19	Dec-19	Total	2,018	2,017
Bakhrabad	2,117	1,708	1,795	1,720	2,049	2,172	2,259						13,820	28,218	8,419
Daily Avg.	68	61	58	57	66	72	73	0	0	0	0	0	65	77	
Bangura	3,330	3,016	3,301	3,107	3,197	2,968	3,296						22,215	43,917	11,705
Daily Avg.	107	108	106	104	103	99	106	0	0	0	0	0	105	120	
Beani Bazar	9,793	8,568	9,561	9,283	10,305	10,427	11,230						69,167	109,854	24,865
Daily Avg.	316	306	308	309	332	348	362	0	0	0	0	0	326	301	
Bibiyana	16,351	14,524	15,756	15,544	16,508	15,623	17,001						111,307	194,651	47,219
Daily Avg.	527	519	508	518	533	521	548	0	0	0	0	0	525	533	
Chattak	0	0	0	0	0	0	0	0	0	0	0	0			
Daily Avg.	0	0	0	0	0	0	0	0	0	0	0	0	0	0	
Fenchuganj	6,323	3,006	3,558	3,470	2,712	2,861	3,603						25,531	74,969	6,700
Daily Avg.	204	107	115	116	87	95	116	0	0	0	0	0	120	205	
Feni	0	0	0	0	0	0	0	0	0	0	0	0	0	0	0
Daily Avg.	0	0	0	0	0	0	0	0	0	0	0	0	0	0	0
Habiganj	2,532	2,133	1,034	874	988	820	793						9,174	39,104	5,197
Daily Avg.	82	76	33	29	32	27	26	0	0	0	0	0	43	107	
Jalalabad	4,717	4,157	4,424	4,369	4,254	3,659	3,872						29,452	55,950	12,915
Daily Avg.	152	148	143	146	137	122	125	0	0	0	0	0	139	153	
Kailas Tila	3,934	3,519	3,851	3,562	1,772	3,011	5,189						24,838	43,233	6,809
Daily Avg.	127	126	124	119	57	100	167	0	0	0	0	0	117	118	
Kamta	0	0	0	0	0	0	0	0	0	0	0	0			
Daily Avg.	0	0	0	0	0	0	0	0	0	0	0	0	0	0	
Meghna	211	429	525	631	631	651	693						3,771	2,014	551
Daily Avg.	7	15	17	21	20	22	22	0	0	0	0	0	18	6	
Moulavi Baza	1,379	710	735	550	427	189	200						4,191	13,965	754
Daily Avg.	44	25	24	18	14	6	6	0	0	0	0	0	20	38	
Narshingdi	883	798	888	879	939	806	466						5,659	10,374	2,645
Daily Avg.	28	29	29	29	30	27	15	0	0	0	0	0	27	28	
Rashidpur	13,567	12,332	13,512	12,940	13,181	12,638	13,173						91,343	137,406	30,969
Daily Avg.	438	440	436	431	425	421	425	0	0	0	0	0	431	376	
Saldanadi	129	115	126	127	131	127	137						892	813	387
Daily Avg.	4	4	4	4	4	4	4	0	0	0	0	0	4	2	

## Monthly Water Production by Fields in July 2019



Field Name	Jan-19	Feb-19	Mar-19	Apr-19	May-19	Jun-19	Jul-19	Aug-19	Sep-19	Oct-19	Nov-19	Dec-19	Total	2,018	2,017
Sangu	0	0	0	0	0	0	0	0	0	0	0	0	0	0	0
Daily Avg.	0	0	0	0	0	0	0	0	0	0	0	0	0	0	0
Semutang	45	47	69	63	65	63	74						424	3,002	719
Daily Avg.	1	2	2	2	2	2	2	0	0	0	0	0	2	8	
Shahbazpur	1,789	1,679	2,096	2,180	2,244	2,257	2,038						14,283	22,110	3,912
Daily Avg.	58	60	68	73	72	75	66	0	0	0	0	0	67	61	
Srikail	1,649	1,517	2,021	1,641	1,662	1,592	1,654						11,735	18,432	4,904
Daily Avg.	53	54	65	55	54	53	53	0	0	0	0	0	55	50	
Sundalpur	26	24	27	27	27	32	48						210	219	0
Daily Avg.	1	1	1	1	1	1	2	0	0	0	0	0	1	1	
Sylhet	2,312	2,022	2,221	2,156	2,234	2,511	4,664						18,120	20,362	1,298
Daily Avg.	75	72	72	72	72	84	150	0	0	0	0	0	85	56	
Titas	49,706	45,683	50,613	49,852	54,221	50,778	53,773						354,626	556,608	126,334
Daily Avg.	1,603	1,632	1,633	1,662	1,749	1,693	1,735	0	0	0	0	0	1,673	1,525	
Begumganj	69	54	61	59	59	67	66						434	207	0
Daily Avg.	2	2	2	2	2	2	2	0	0	0	0	0	2	1	
Rupganj	0		0			0	0						0	0	34
Daily Avg.	0	0	0	0	0	0	0	0	0	0	0	0	0	0	
<b>Total (000'bl)</b>	<b>120,860</b>	<b>106,040</b>	<b>116,173</b>	<b>113,034</b>	<b>117,606</b>	<b>113,251</b>	<b>124,229</b>	<b>0</b>	<b>0</b>	<b>0</b>	<b>0</b>	<b>0</b>	<b>811,194</b>	<b>1,375,408</b>	<b>296</b>
<b>Daily Avg. (000'bbl)</b>	<b>3,899</b>	<b>3,787</b>	<b>3,748</b>	<b>3,768</b>	<b>3,794</b>	<b>3,775</b>	<b>4,007</b>	<b>0</b>	<b>0</b>	<b>0</b>	<b>0</b>	<b>0</b>	<b>3,826</b>	<b>3,768</b>	<b>1</b>

## Conditions of Field and Well upto July 2019



Well	company	well type	Discovery	production start	Drilled depth (ft)	Pressure	Pressure type	Completion Zone
<b>Field : Bakharabad</b>								
BKB-1	BGFCL	Vertical	1969	June,1969	9309		FWHP	J
BKB-2	BGFCL	Directional	1969	October,1981	7496	248-274	FWHP	G
BKB-3	BGFCL	Directional	1969	April,1982	9339	356-412	FWHP	G
BKB-4	BGFCL	Directional	1969	June,1982	9430			D
BKB-5	BGFCL	Directional	1969	Sept,1982	9675	1555-1646	FWHP	B
BKB-6	BGFCL	Directional	1969	March,1989	8785			J
BKB-7	BGFCL	Directional	1969	July,1989	8605		FWHP	J
BKB-8	BGFCL	Directional	1969	Sept,1989	8840	490-523	FWHP	J
BKB-9	BGFCL	Vertical	1969	August,2013	8318	1005-1097	FWHP	G
BKB-10	BGFCL	Directional	1969	June,2016	9291	1010-1102	FWHP	K
<b>Field : Bangura</b>								
Bangura-1	Tullow		2004			887-940	FWHP	D
Bangura-2	Tullow		2004			587-685	FWHP	D/E
Bangura-3	Tullow		2004			719-789	FWHP	D
Bangura-6	Tullow		2004			708-780	FWHP	D
Bangura-5	Tullow		2004			579-621	FWHP	D
<b>Field : Beani Bazar</b>								
BB-1	SGFL		1981	July,1999	13480	580-620	SIWHP	Upper
BB-2	SGFL		1981	July,1999	12048	3210-3220	FWHP	Upper
<b>Field : Bibiyana</b>								
BY-1	Chevron		1998			1547-2007	FWHP	BB60, BB66
BY-2	Chevron		1998			1313-1390	FWHP	BB60, BH20A, BH20E
BY-3	Chevron		1998			1363-1403	FWHP	BB70
BY-4	Chevron		1998			1330-1390	FWHP	BH10
BY-5	Chevron		1998			1254-1299	FWHP	BH20A, BH20B, BH20C, BH20D
BY-6	Chevron		1998			1250-1486	FWHP	BB70
BY-7	Chevron		1998			1454-1566	FWHP	BH10
BY-8	Chevron		1998			1270-1297	FWHP	BH20A, BH20B
BY-9	Chevron		1998			1243-1273	FWHP	BH10
BY-10	Chevron		1998			1465-1533	FWHP	BB60
BY-11	Chevron		1998			1260-1284	FWHP	BH20A, BH20B
BY-12	Chevron		1998			1259-1332	FWHP	BB70
BY-13	Chevron		1998			1300-1356	FWHP	BH20A, BH20B
BY-14	Chevron		1998			1342-1632	FWHP	BH20A, BH20B
BY-15	Chevron		1998			2189-2240	FWHP	BB60
BY-16	Chevron		1998			1381-1644	FWHP	BH10, BH20D

## Conditions of Field and Well upto July 2019



Well	company	well type	Discovery	production start	Drilled depth (ft)	Pressure	Pressure type	Completion Zone
BY-17	<i>Chevron</i>		<i>1998</i>			<i>2104-2229</i>	<i>FWHP</i>	<i>BB60</i>
BY-18	<i>Chevron</i>		<i>1998</i>			<i>1904-2218</i>	<i>FWHP</i>	<i>BB60</i>
BY-19	<i>Chevron</i>		<i>1998</i>			<i>1354-1477</i>	<i>FWHP</i>	<i>BH10, BH20A</i>
BY-20	<i>Chevron</i>		<i>1998</i>			<i>1248-1262</i>	<i>FWHP</i>	<i>BH20D, BH20A, BH10</i>
BY-21	<i>Chevron</i>		<i>1998</i>			<i>1333-1348</i>	<i>FWHP</i>	<i>BH20A, BH20B, BH10</i>
BY-22	<i>Chevron</i>		<i>1998</i>			<i>1552-1586</i>	<i>FWHP</i>	<i>BB60</i>
BY-23	<i>Chevron</i>		<i>1998</i>			<i>1739-2021</i>	<i>FWHP</i>	<i>BH10, BH20A, BH20B, BH20C</i>
BY-24	<i>Chevron</i>		<i>1998</i>			<i>1337-2091</i>	<i>FWHP</i>	<i>BB60</i>
BY-25	<i>Chevron</i>		<i>1998</i>			<i>1728-1857</i>	<i>FWHP</i>	<i>BB60, BB66</i>
BY-26	<i>Chevron</i>		<i>1998</i>			<i>1877-2094</i>	<i>FWHP</i>	<i>BB60, BB64</i>
<b>Field : Chattak</b>								
Ch-1	SGFL		1959					
<b>Field : Fenchuganj</b>								
Fenchuganj-2	<i>BAPEX</i>		<i>1988</i>	<i>May, 2004</i>				
Fenchuganj-3	<i>BAPEX</i>		<i>1988</i>	<i>February, 2005</i>		<i>2004-2010</i>		<i>upper</i>
Fenchuganj-4	<i>BAPEX</i>		<i>1988</i>			<i>2037-2065</i>		
<b>Field : Feni</b>								
Feni-1	<i>BAPEX</i>		<i>1981</i>					
Feni-2	<i>BAPEX</i>		<i>1981</i>					
Feni-3	<i>BAPEX</i>		<i>1981</i>					
Feni-4	<i>BAPEX</i>		<i>1981</i>					
Feni-5	<i>BAPEX</i>		<i>1981</i>					
<b>Field : Habiganj</b>								
Hbj-1	<i>BGFCL</i>	<i>Vertical</i>	<i>1963</i>	<i>Feb,1969</i>	<i>11500</i>		<i>FWHP</i>	<i>upper</i>
Hbj-2	<i>BGFCL</i>	<i>Vertical</i>	<i>1963</i>	<i>Feb,1969</i>	<i>5100</i>		<i>FWHP</i>	<i>upper</i>
Hbj-3	<i>BGFCL</i>	<i>Vertical</i>	<i>1963</i>	<i>July,1985</i>	<i>5282</i>	<i>1478-1486</i>	<i>FWHP</i>	<i>upper</i>
Hbj-4	<i>BGFCL</i>	<i>Vertical</i>	<i>1963</i>	<i>May,1985</i>	<i>5249</i>	<i>1460-1467</i>	<i>FWHP</i>	<i>upper</i>
Hbj-5	<i>BGFCL</i>	<i>Directional</i>	<i>1963</i>	<i>Feb,1992</i>	<i>11552</i>	<i>1440-1446</i>	<i>FWHP</i>	<i>upper</i>
Hbj-6	<i>BGFCL</i>	<i>Vertical</i>	<i>1963</i>	<i>Feb,1992</i>	<i>5515</i>	<i>1375-1379</i>	<i>FWHP</i>	<i>upper</i>
Hbj-7	<i>BGFCL</i>	<i>Vertical</i>	<i>1963</i>	<i>April,2000</i>	<i>10236</i>	<i>1331-1139</i>	<i>FWHP</i>	<i>upper</i>
Hbj-8	<i>BGFCL</i>	<i>Vertical</i>	<i>1963</i>	<i>May, 2000</i>	<i>5280</i>			<i>upper</i>
Hbj-9	<i>BGFCL</i>	<i>Vertical</i>	<i>1963</i>	<i>July,1998</i>	<i>5249</i>			<i>upper</i>
Hbj-10	<i>BGFCL</i>	<i>Vertical</i>	<i>1963</i>	<i>Apr, 2000</i>	<i>5133</i>	<i>1322-1331</i>	<i>FWHP</i>	<i>upper</i>
Hbj-11	<i>BGFCL</i>	<i>Vertical</i>	<i>1963</i>	<i>February,2008</i>	<i>10499</i>	<i>1417-1423</i>	<i>FWHP</i>	<i>upper</i>
<b>Field : Jalalabad</b>								
JB-1	<i>Chevron</i>		<i>1989</i>			<i>1333-1436</i>	<i>FWHP</i>	<i>BB60, BB50</i>

## Conditions of Field and Well upto July 2019



Well	company	well type	Discovery	production start	Drilled depth (ft)	Pressure	Pressure type	Completion Zone
JB-2	<i>Chevron</i>		<i>1989</i>			<i>1279-1294</i>	<i>FWHP</i>	<i>BB50, BB60</i>
JB-3	<i>Chevron</i>		<i>1989</i>			<i>1332-1375</i>	<i>FWHP</i>	<i>BB50, BB60</i>
JB-4	<i>Chevron</i>		<i>1989</i>			<i>1365-1425</i>	<i>FWHP</i>	<i>BB60</i>
JB-6	<i>Chevron</i>		<i>1989</i>			<i>1354-1362</i>	<i>FWHP</i>	<i>BB60, BB50</i>
JB-7	<i>Chevron</i>		<i>1989</i>			<i>1666-1679</i>	<i>FWHP</i>	<i>BB20</i>
JB-8	<i>Chevron</i>		<i>1989</i>			<i>1362-1370</i>	<i>FWHP</i>	<i>BB50, BB60</i>
<b>Field : Kailas Tila</b>								
KTL-1	<i>SGFL</i>		<i>1962</i>	<i>June, 1983</i>	<i>12417</i>	<i>0</i>	<i>SIWHP</i>	
KTL-2	<i>SGFL</i>		<i>1962</i>	<i>Feb, 1995</i>		<i>2225-2230</i>	<i>FWHP</i>	
KTL-3	<i>SGFL</i>		<i>1962</i>	<i>March, 1995</i>		<i>2470-2495</i>	<i>FWHP</i>	
KTL-4	<i>SGFL</i>		<i>1962</i>	<i>March, 1997</i>		<i>2360-2410</i>	<i>FWHP</i>	
KTL-5	<i>SGFL</i>		<i>1962</i>	<i>Sep, 2006</i>		<i>0</i>	<i>SIWHP</i>	
KTL-6	<i>SGFL</i>		<i>1962</i>	<i>Aug, 2007</i>		<i>2490-2495</i>	<i>FWHP</i>	
KTL-7	<i>SGFL</i>		<i>1962</i>			<i>0</i>	<i>SIWHP</i>	
<b>Field : Kamta</b>								
Kamta-1	<i>BGFCL</i>	<i>Vertical</i>	<i>1981</i>	<i>july,1982</i>	<i>11857</i>			<i>N/A</i>
<b>Field : Meghna</b>								
M-1	<i>BGFCL</i>	<i>Vertical</i>	<i>2004</i>	<i>july,1990</i>	<i>10069</i>	<i>1400-1450</i>	<i>FWHP</i>	<i>A,E,F &amp; G</i>
<b>Field : Moulavi Bazar</b>								
MV Bazar-2	<i>Chevron</i>		<i>1997</i>			<i>800-820</i>	<i>FWHP</i>	<i>BB70</i>
MV Bazar-3	<i>Chevron</i>		<i>1997</i>			<i>800-820</i>	<i>FWHP</i>	<i>BB70</i>
MV Bazar-4	<i>Chevron</i>		<i>1997</i>			<i>946-952</i>	<i>FWHP</i>	<i>BB20</i>
MV Bazar-5	<i>Chevron</i>		<i>1997</i>			<i>0</i>	<i>SIWHP</i>	<i>BB60</i>
MV Bazar-6	<i>Chevron</i>		<i>1997</i>			<i>822-890</i>	<i>FWHP</i>	<i>BB20</i>
MV Bazar-7	<i>Chevron</i>		<i>1997</i>			<i>844-901</i>	<i>FWHP/SIWHP</i>	<i>BB20</i>
MV Bazar-9	<i>Chevron</i>		<i>1997</i>			<i>0</i>	<i>SIWHP</i>	<i>BB46, BB48, BB60</i>
<b>Field : Narshingdi</b>								
N-1	<i>BGFCL</i>	<i>vertical</i>	<i>1990</i>	<i>october,1990</i>	<i>11320</i>	<i>1143-1197</i>	<i>FWHP</i>	<i>BL</i>
N-2	<i>BGFCL</i>	<i>vertical</i>	<i>1990</i>	<i>february,2007</i>	<i>10778</i>	<i>1015-1097</i>	<i>FWHP</i>	<i>BL</i>
<b>Field : Rashidpur</b>								
RP-1	<i>SGFL</i>		<i>1960</i>			<i>1290-1291</i>	<i>FWHP</i>	<i>Upper</i>
RP-2	<i>SGFL</i>		<i>1960</i>			<i>73</i>	<i>SIWHP</i>	<i>Lower</i>
RP-3	<i>SGFL</i>		<i>1960</i>			<i>1548-1568</i>	<i>FWHP</i>	<i>Lower</i>
RP-4	<i>SGFL</i>		<i>1960</i>			<i>1450-1655</i>	<i>FWHP</i>	<i>Lower</i>
RP-5	<i>SGFL</i>		<i>1960</i>			<i>2291</i>	<i>SIWHP</i>	<i>Lower</i>
RP-6	<i>SGFL</i>		<i>1960</i>			<i>870</i>	<i>SIWHP</i>	<i>A</i>

## Conditions of Field and Well upto July 2019



**HYDROCARBON UNIT**

Energy & Mineral Resources Division

Well	company	well type	Discovery	production start	Drilled depth (ft)	Pressure	Pressure type	Completion Zone
RP-7	SGFL		1960			1308-1338	FWHP	Lower
RP-8	SGFL		1960			1600-1625	FWHP	Upper
<b>Field : Salda Nadi</b>								
Salda-1	BAPEX		1995					
Salda-2	BAPEX		1995					
Salda-3	BAPEX	Directional	1995	February, 2012		639-640, 698-700		Upper/Lower
Salda-4	BAPEX		1995					
<b>Field : Sangu</b>								
Sangu-1	BGFCL		1996					
Sangu-3z	BGFCL		1996					
Sangu-4	BGFCL		1996					
Sangu-5	BGFCL		1996					
Sangu-7	BGFCL		1996					
Sangu-8	BGFCL		1996					
Sangu-9	BGFCL		1996					
Sangu-10	BGFCL		1996					
Sangu-11	BGFCL		1996					
<b>Field : Semutang</b>								
Semutang-5	BAPEX		1967			280-508		Lower Zone
Semutang-6	BAPEX		1967			750-1302		
<b>Field : Shahbazpur</b>								
Shahbazpur-1	BAPEX		1995	May, 2009		2310-3543		Lower Zone
Shahbazpur-2	BAPEX		1995			3541-4133		Lower Zone
Shahbazpur-3	BAPEX		1995			4300		Upper Zone
Shahbazpur-4	BAPEX		1995			4250		Upper Zone
<b>Field : Srikail</b>								
Srikail-2	BAPEX		2012			990-1016		Upper & Lower D
Srikail-3	BAPEX		2012			981-1043		Upper & Lower D
Srikail-4	BAPEX		2012			1018-1068		Upper & Lower D
<b>Field : Sundalpur</b>								
Sundalpur -1	BAPEX		2011					
Sundalpur -2	BAPEX		2011					
<b>Field : Sylhet</b>								
Sylhet-3	SGFL		1955	Aug, 1958				
Sylhet-6	SGFL		1955	Aug, 1964		800-850	SIWHP	
Sylhet-7	SGFL		1955	Apr, 2005		1750-1820	FWHP	Lower Bokabil

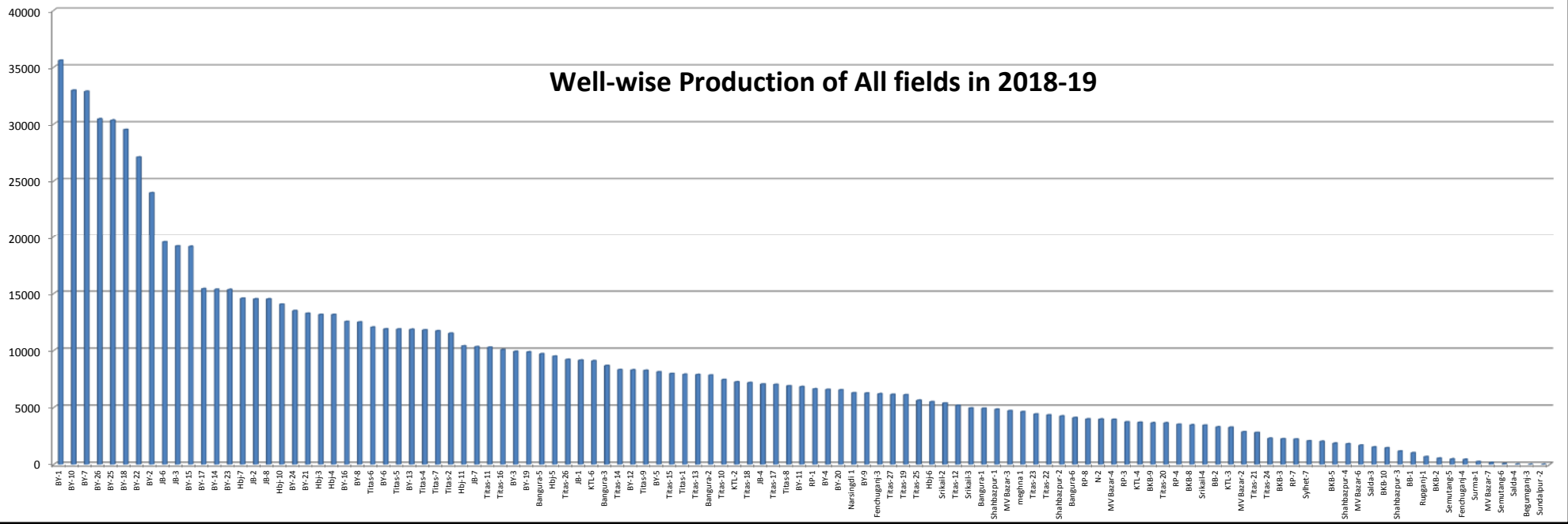


## Conditions of Field and Well upto July 2019

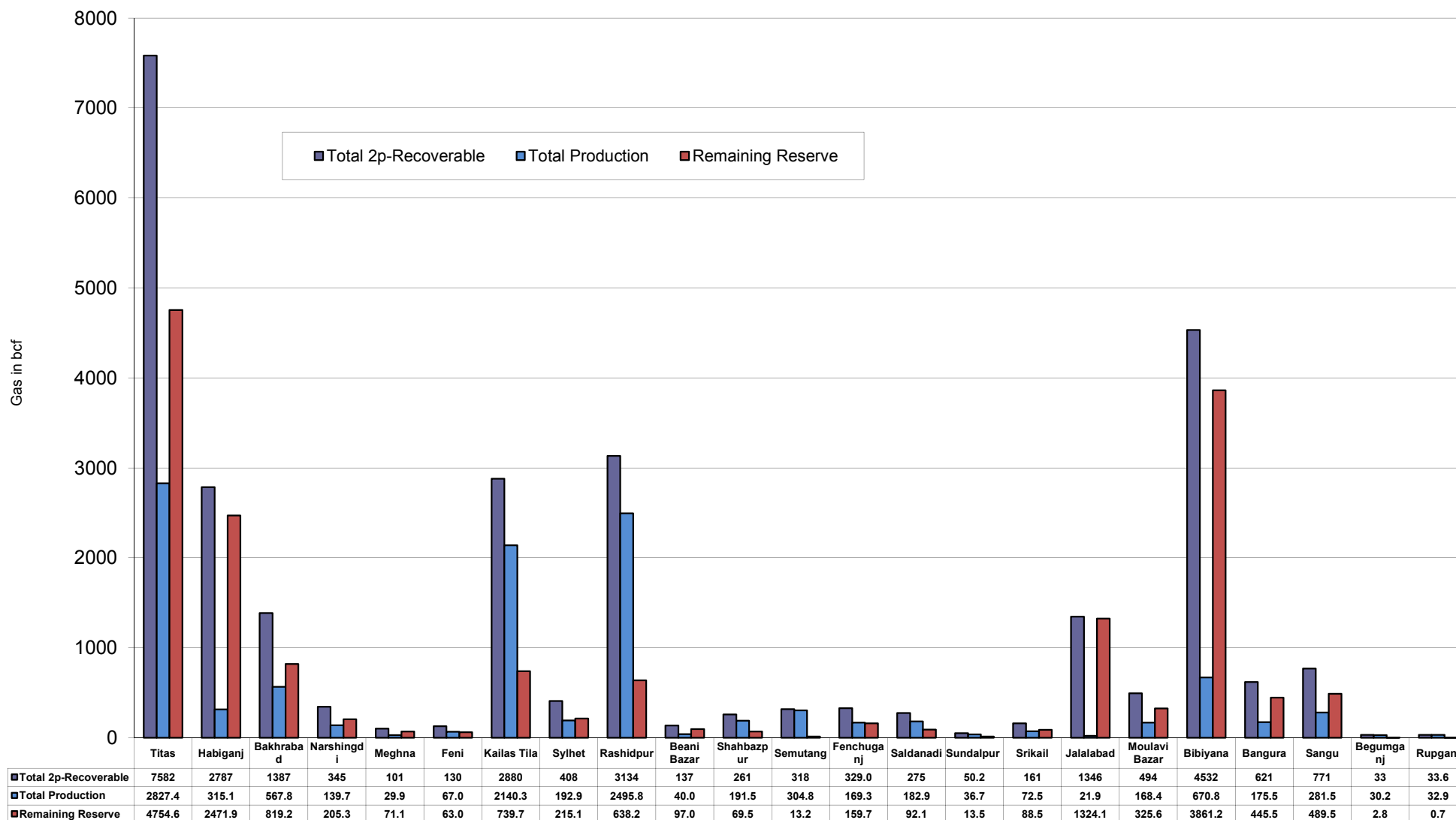


Well	company	well type	Discovery	production start	Drilled depth (ft)	Pressure	Pressure type	Completion Zone
Surma-1	SGFL		1955	June, 2010		230	SIWHP	C & D
<b>Field : Titas</b>								
Titas-1	BGFCL	vertical	1962	Mar,1969	12325	900-925	FWHP	A
Titas-2	BGFCL	vertical	1962	Fen,1969	10574	960-1020	FWHP	A
Titas-3	BGFCL	vertical	1962	sept,1969	9315	0	FWHP	A
Titas-4	BGFCL	vertical	1962	oct,1969	9350	1020-1070	FWHP	A
Titas-5	BGFCL	Directional	1962	jan,1981	10805	990-1035	FWHP	A
Titas-6	BGFCL	vertical	1962	Feb,1984	10072	1195-1225	FWHP	A
Titas-7	BGFCL	Directional	1962	July,1985	11006	1090-1160	FWHP	A
Titas-8	BGFCL	Directional	1962	sept,1985	11760	1000-1030	FWHP	B & C
Titas-9	BGFCL	Directional	1962	jan,1988	11893	1040-1085	FWHP	B & C
Titas-10	BGFCL	Directional	1962	may,1988	12139	1140-1180	FWHP	A
Titas-11	BGFCL	vertical	1962	Jun,1991	10462	1275-1310	FWHP	A
Titas-12	BGFCL	Directional	1962	July,2002	9873	1465-1500	FWHP	A
Titas-13	BGFCL	Directional	1962	June,2000	11487	1085-1115	FWHP	A
Titas-14	BGFCL	Directional	1962	June,2000	11004	1200-1250	FWHP	A
Titas-15	BGFCL	vertical	1962	may,2006	10446	0	FWHP	A
Titas-16	BGFCL	Directional	1962	dec,2005	11673	1205-1225	FWHP	A
Titas-17	BGFCL	vertical	1962	feb,2013	9424	1145-1175	FWHP	A
Titas-18	BGFCL	Directional	1962	august,2013	10932	1165-1190	FWHP	A
Titas-19	BGFCL	Directional	1962	may,2014	12730	1365-1415	FWHP	A
Titas-20	BGFCL	Directional	1962	oct,2013	11585	1370-1440	FWHP	A
Titas-21	BGFCL	Directional	1962	dec,2013	11631	1260-1285	FWHP	A
Titas-22	BGFCL	Directional	1962	march,2014	11926	990-1025	FWHP	A
Titas-27	BGFCL	Directional	1962	april,2014	10292	1245-1265	FWHP	A
Titas-23	BGFCL	Directional	1962	feb,2017	11988	2265-2340	FWHP	C
Titas-24	BGFCL	Directional	1962	oct,2016	12686	1120-1245	FWHP	C
Titas-25	BGFCL	vertical	1962	march,2016	11680	1300-1340	FWHP	A
Titas-26	BGFCL	Directional	1962	july,2016	12618	1840-1875	FWHP	C
<b>Field : Begumganj</b>								
Begumganj-3	BAPEX		1977					
<b>Field : Rupganj</b>								
Rupganj-1	BAPEX		2014			38-88		

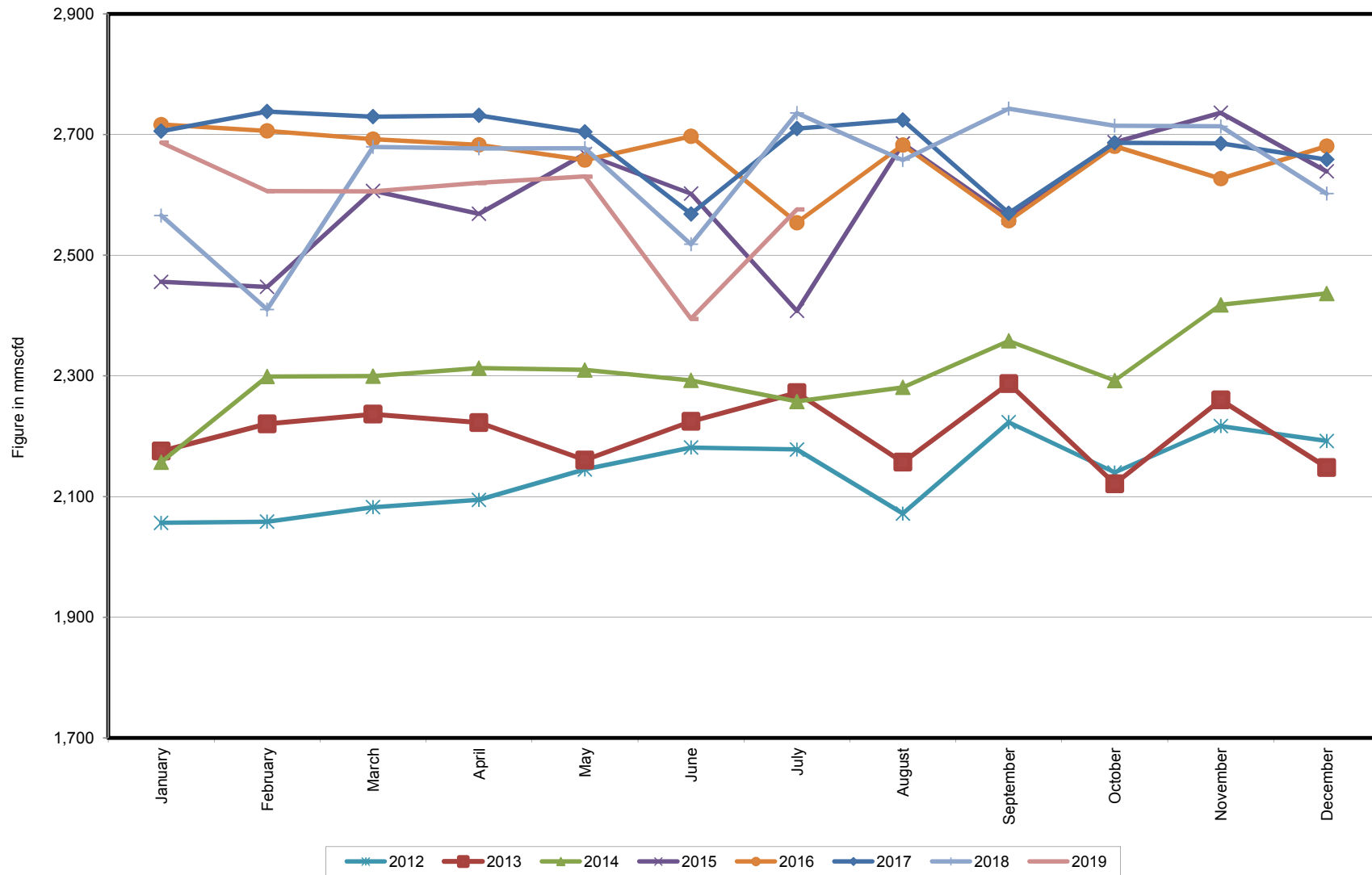
### Well-wise Production of All fields in 2018-19



## Reserve, Production and Remaining Reserve as of July 2019



## Daily Avg. Production From January 2012 to July 2019



## Field Wise Daily Avg. Production July 2019

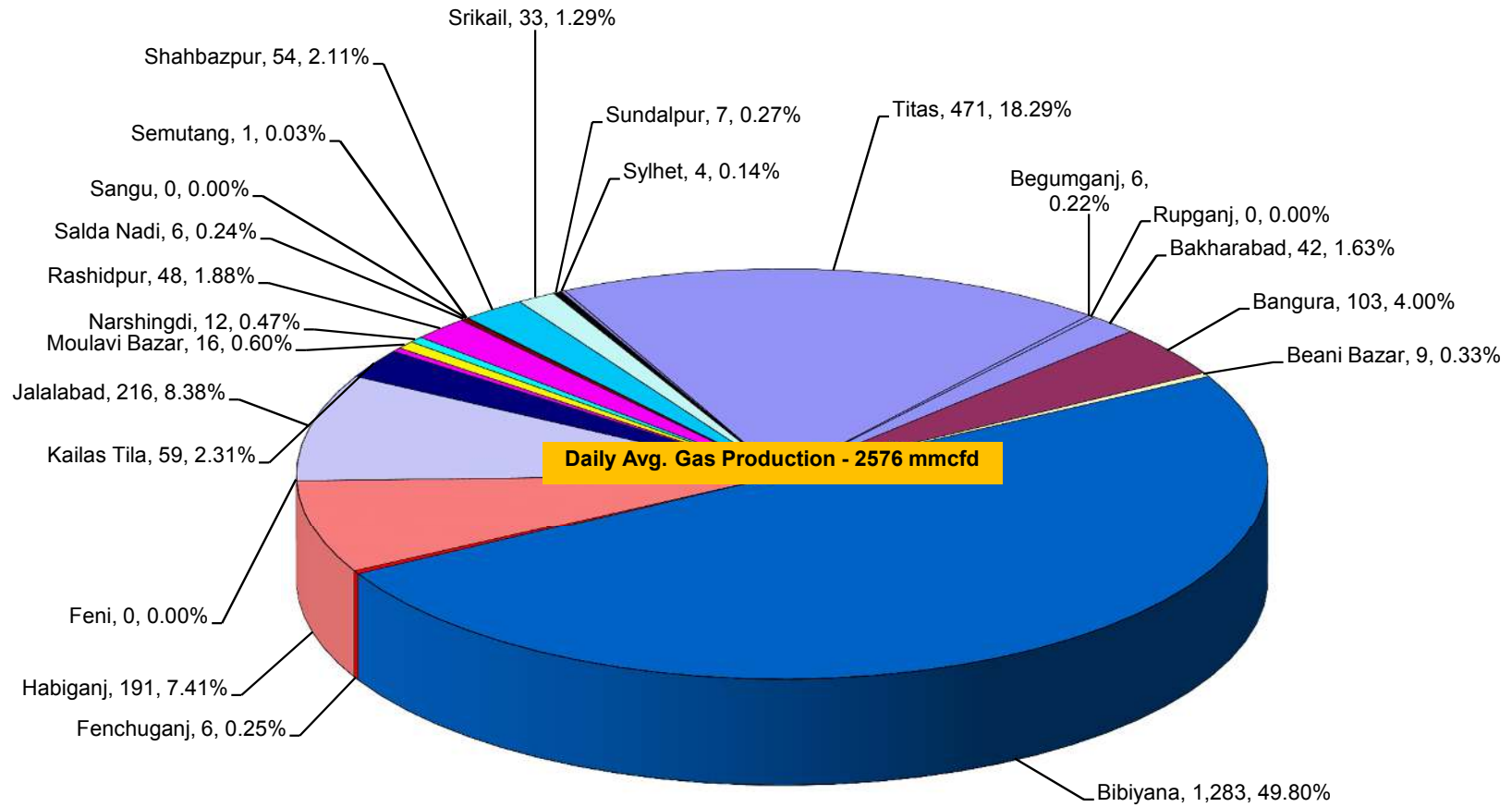
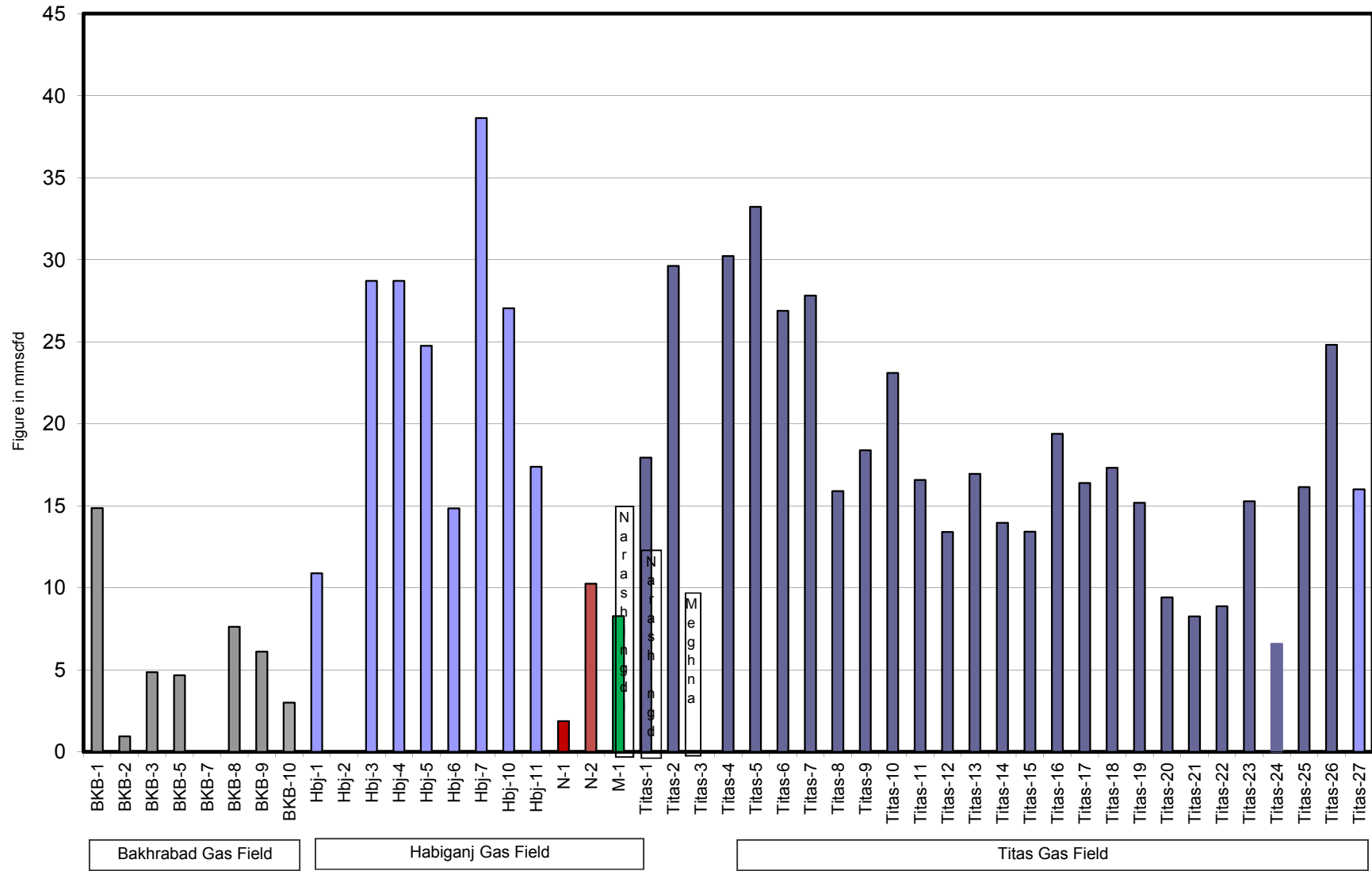
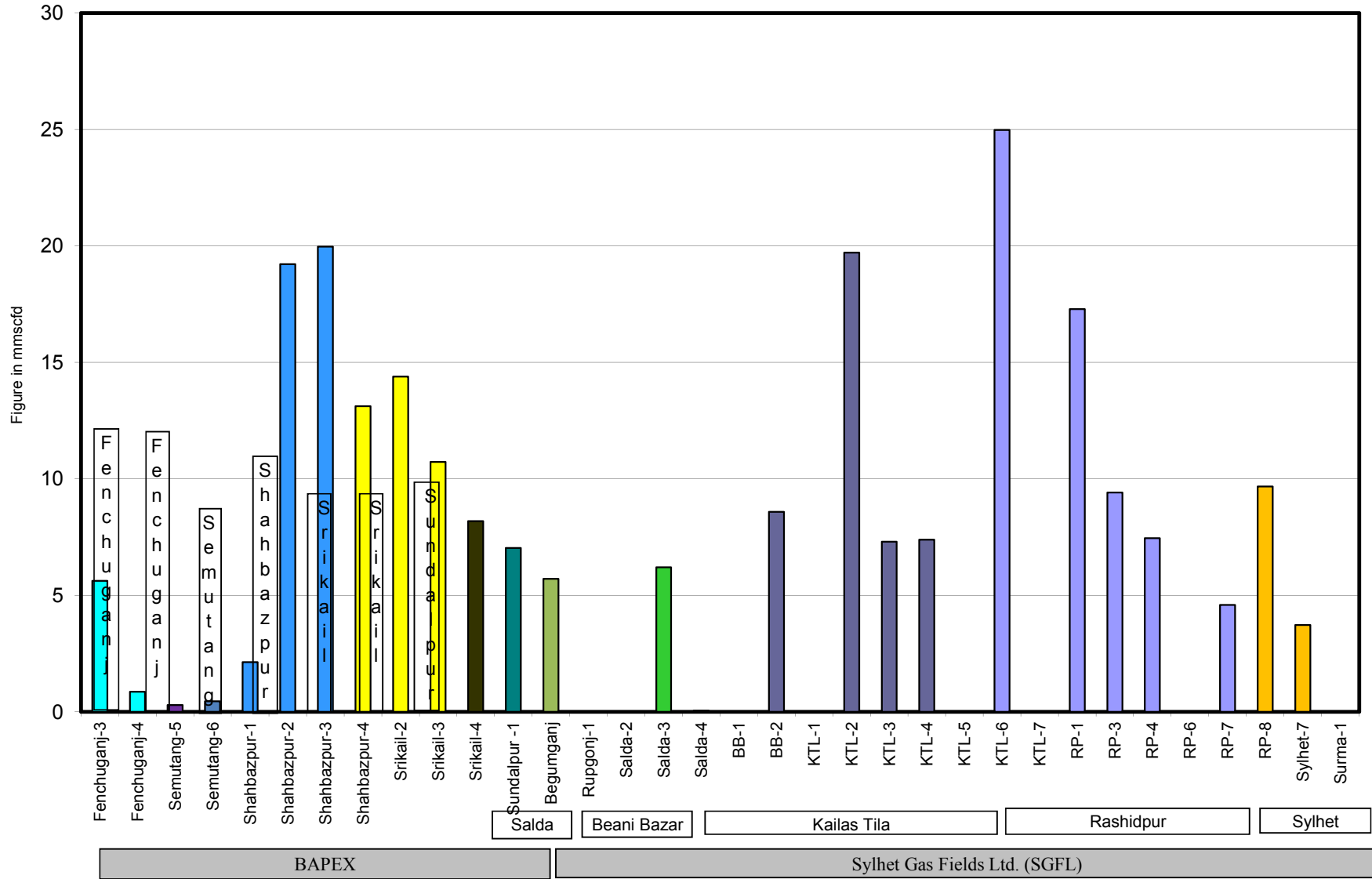


Figure in mmcf  
and % of total production

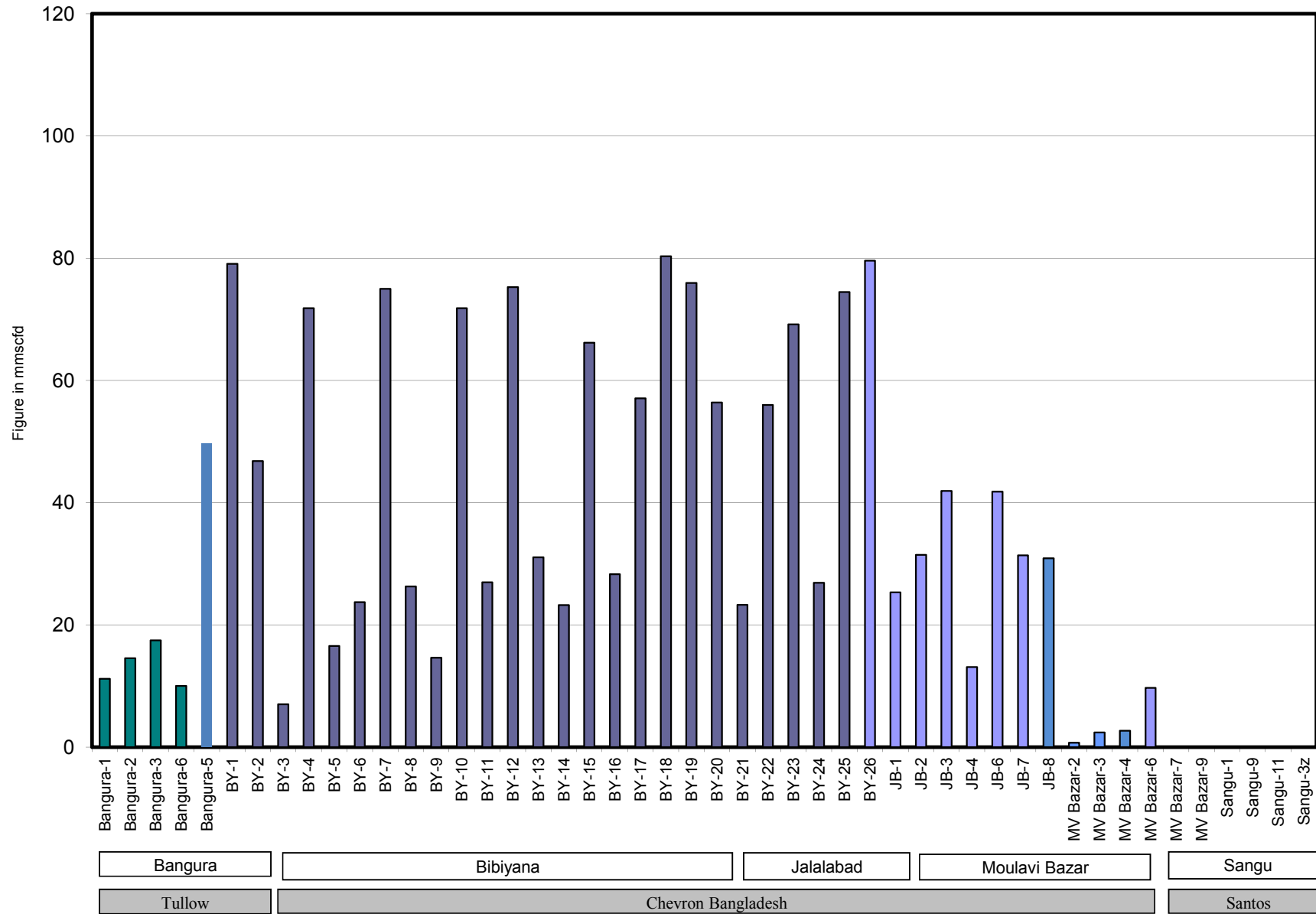
## Wellwise Daily Avg. Production- BGFCL July 2019



# Wellwise Daily Avg. Production- Bapex and SGFL July 2019

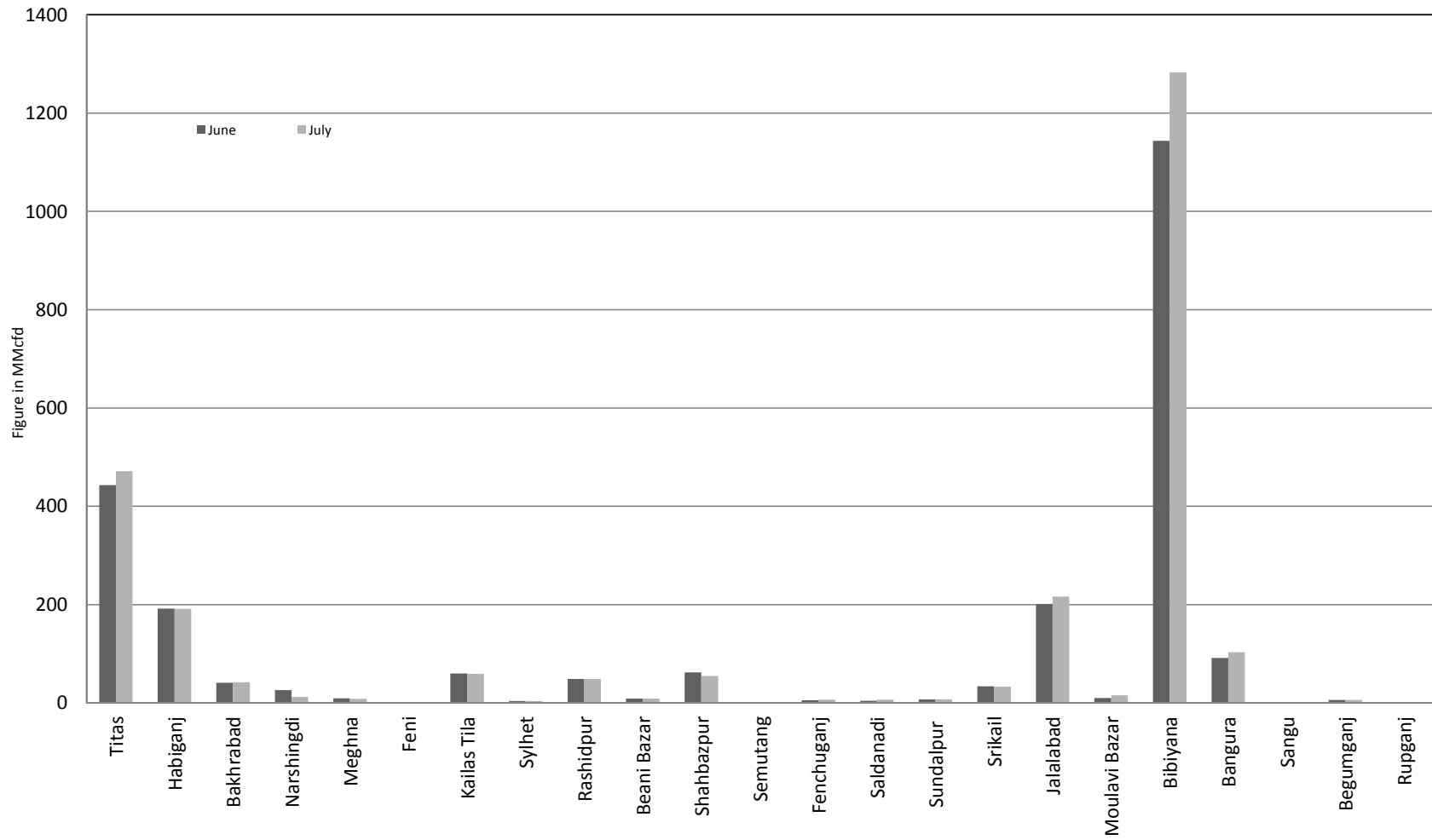


## Wellwise Daily Avg. Production- IOC and JVA July 2019

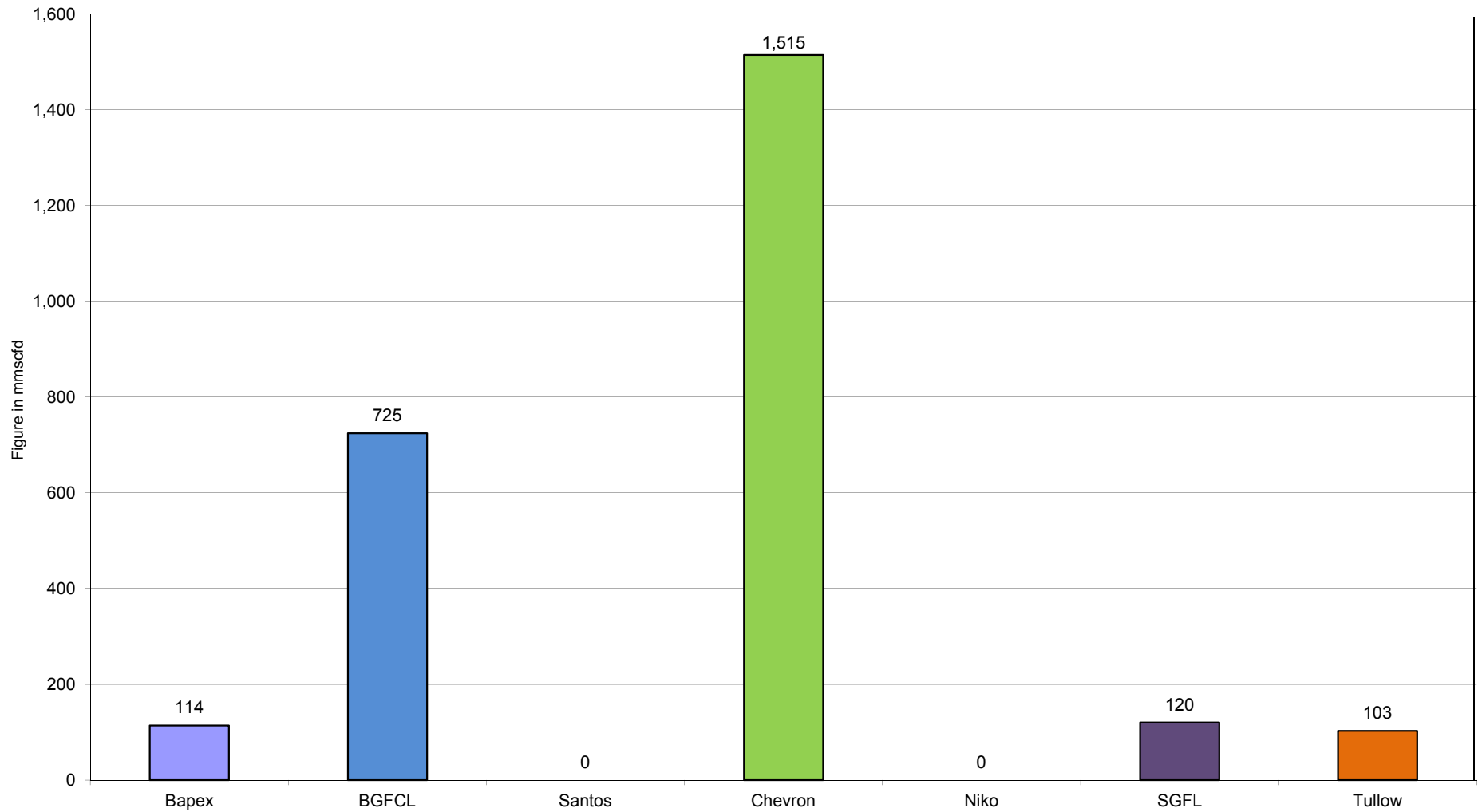




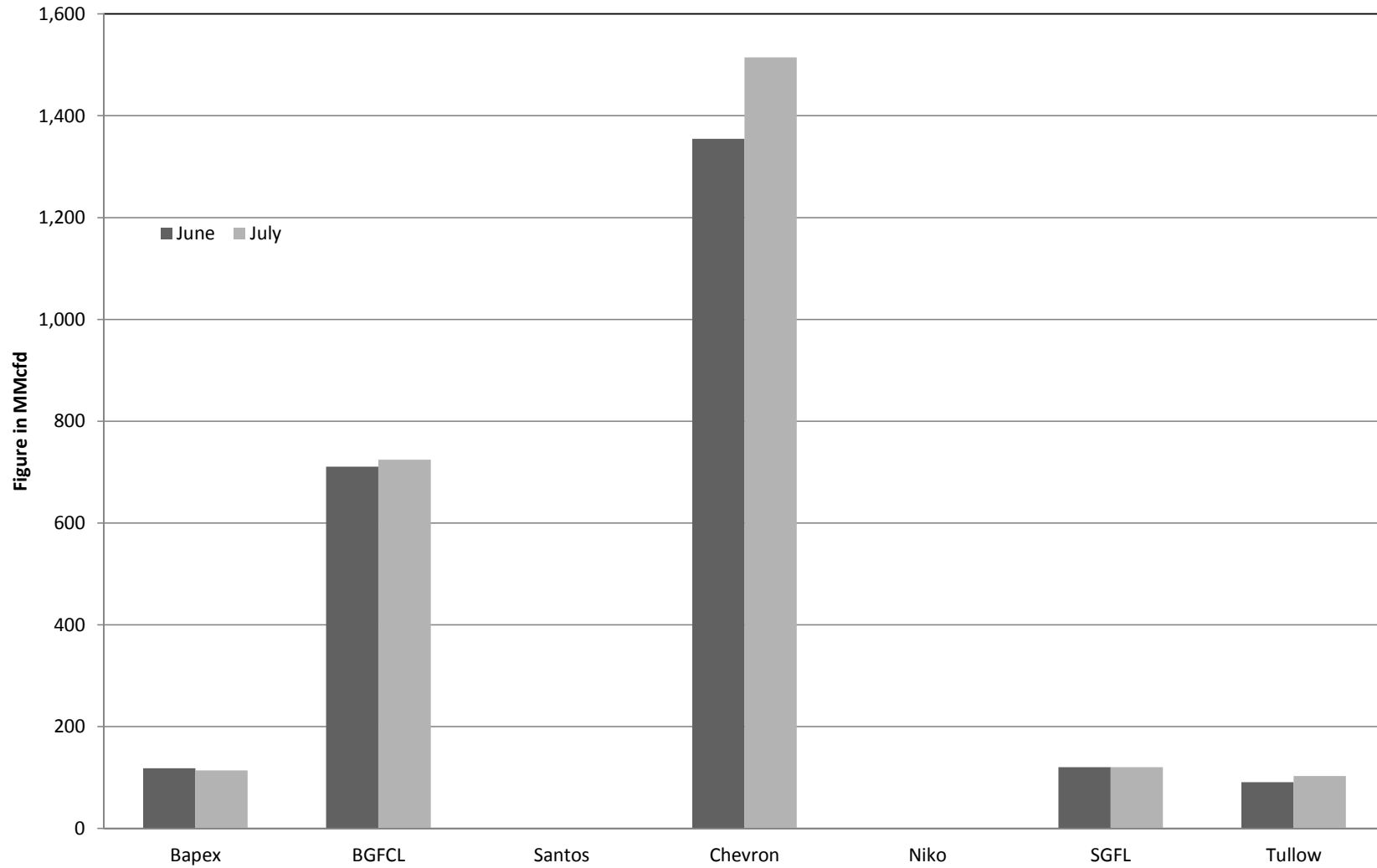
## Comparison of fieldwise daily avg. Gas production between June 2019 & July 2019



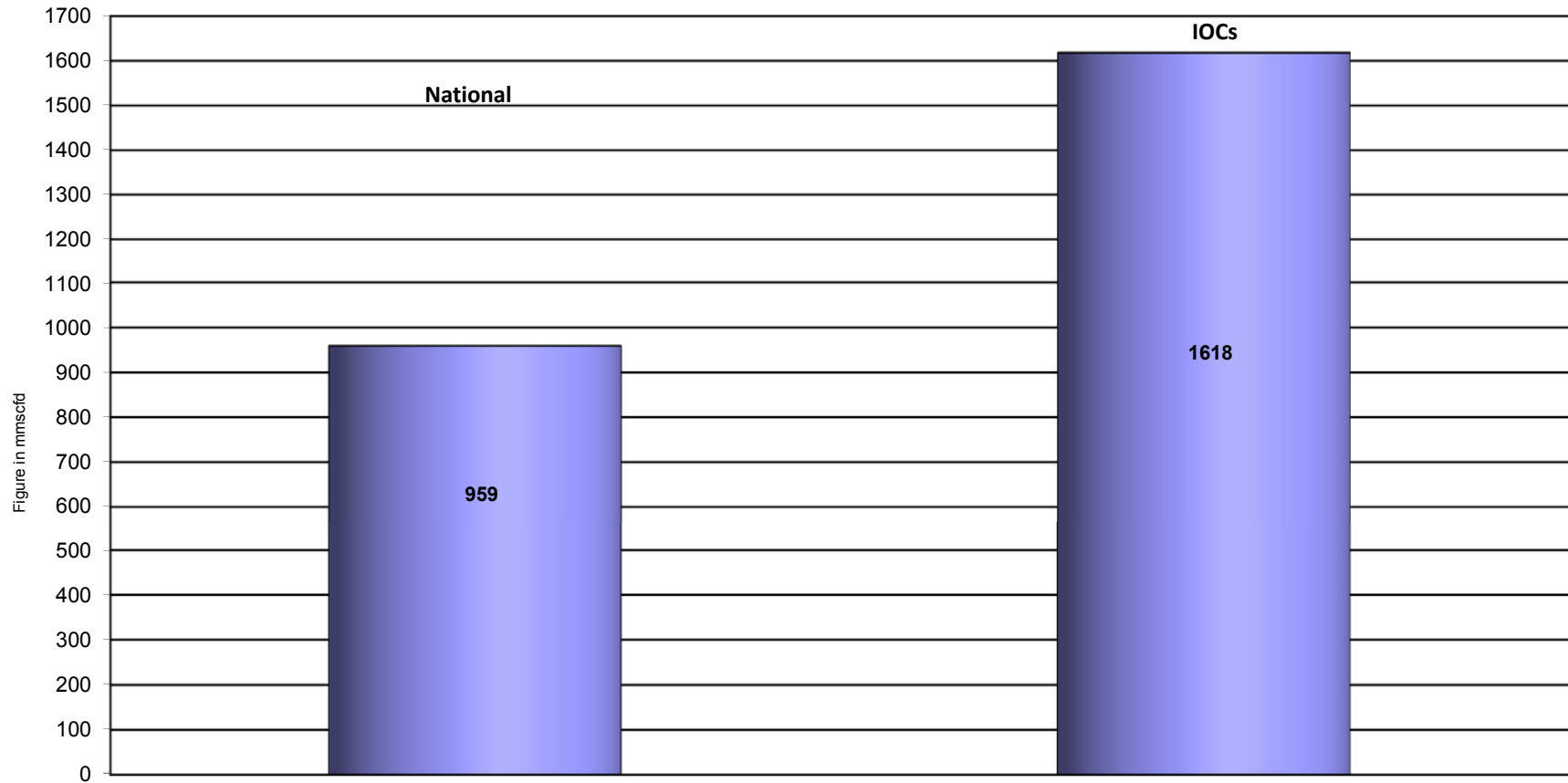
## Daily Avg. Production by Operators July 2019



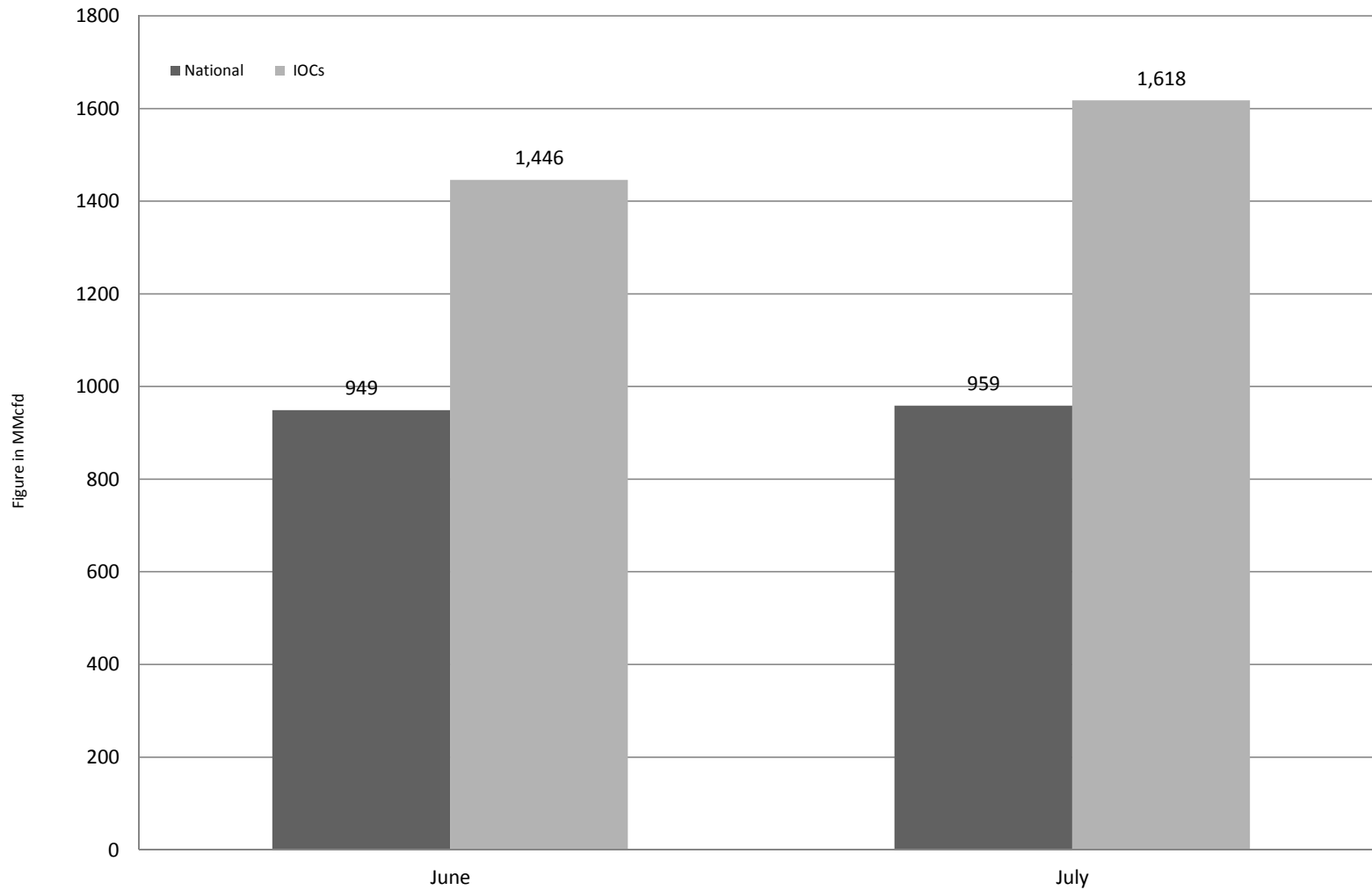
**Comparison of operatorwise daily avg. Gas production  
between June 2019 & July 2019**



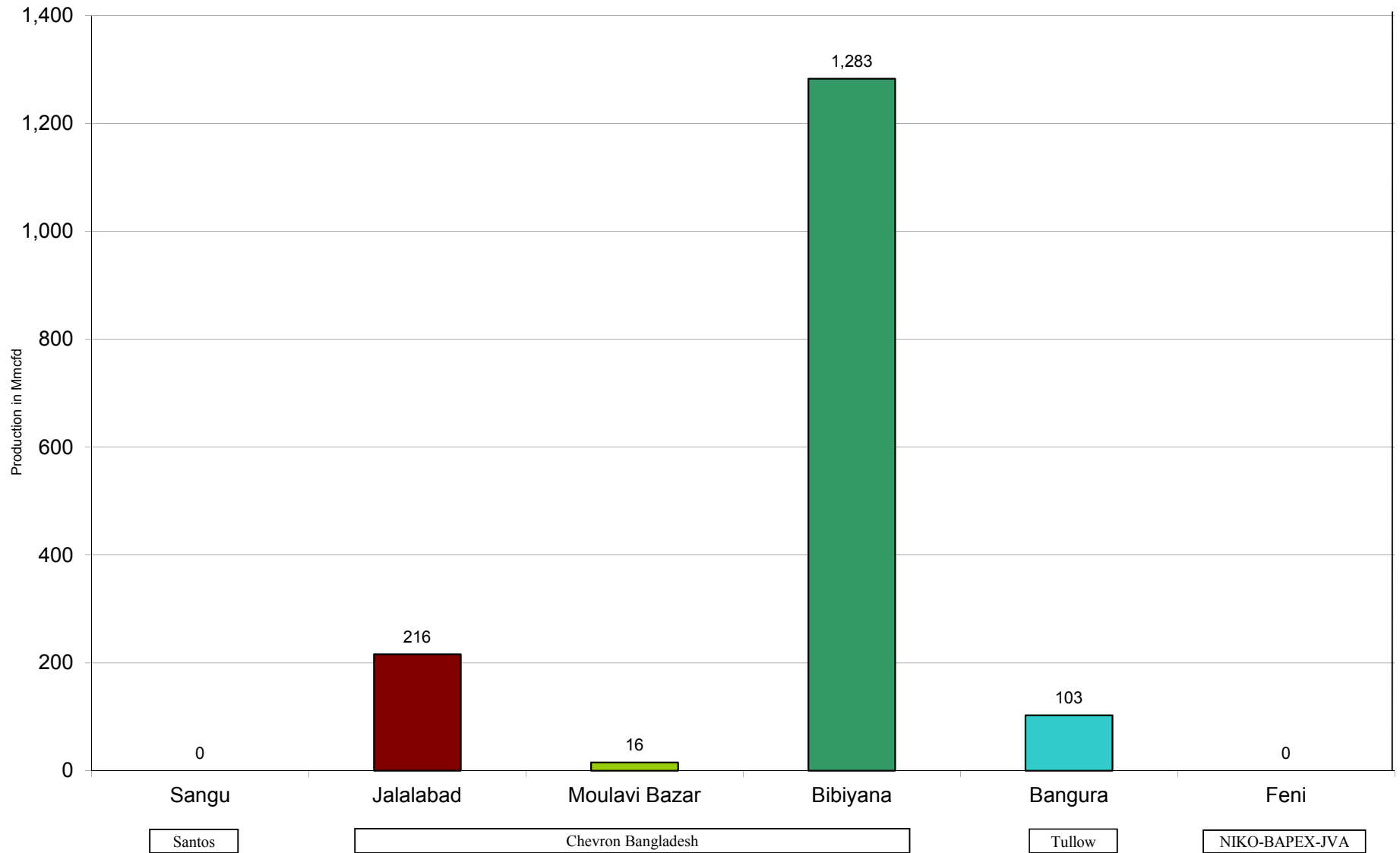
## Daily Avg. Production - National Vs. IOCs July 2019



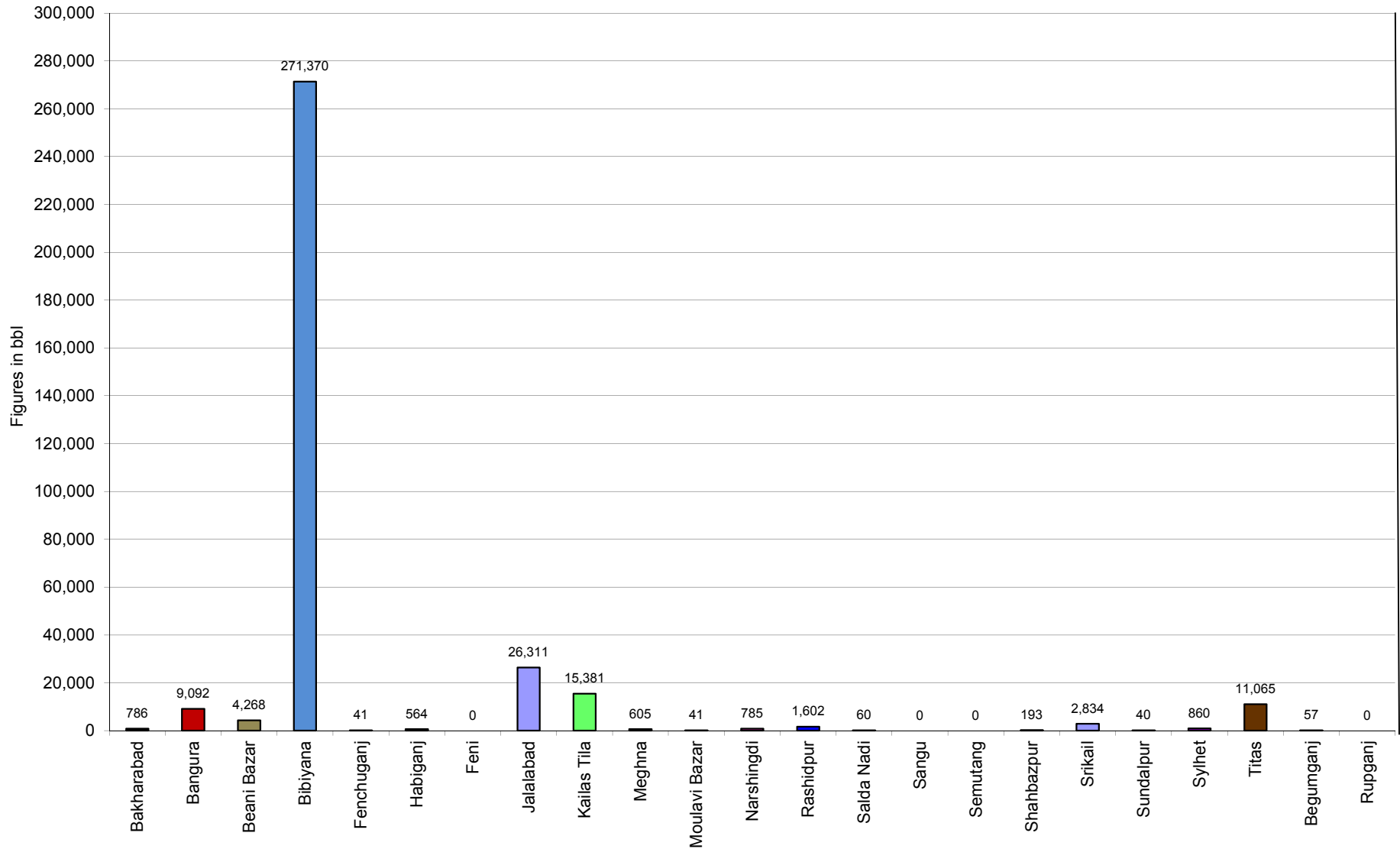
## Comparison of daily avg. Gas production - National vs IOC's between June 2019 & July 2019



## Daily Avg. Production - IOC and JVA July 2019



# Monthly Condensate Production July 2019



## Field wise Coal Reserve in Bangladesh

SI No.	Coal Basins	Proved (Mt)	Indicated (Mt)	Inferred (Mt)	Total (Mt)
1	Barapukuria	114.32	211.33	21.06+(43-64)*	346.71+(43-64)*
2	Phulbari	288	226	58	572
3	Khalashpir	-	297.57	225.92	523.49
4	Jamalganj	-	-	1053.9	1053.9
5	Dighipara	-	105	495	600
	<b>Total</b>	<b>402.32</b>	<b>839.9</b>	<b>1896.88-1917.88</b>	<b>3139.10-3160.10</b>

*\*Resources of VI Seam in second syncline are towards SW of main basin, after Wardell Armstrong*

*NOTE: Reserve Figure based on Coal Sector Development Strategy (Final), HCU, PwC*



## Summary of Reserve and Production of Barapukuria Coal Mine As of 31 July 2019

<b>Coal Initially Place (Proven + Probable)</b>	<b>346,710 kT</b>	<b>346.71 MT</b>
<b>Total Reserve of Seam VI</b>	<b>285,410 kT</b>	<b>285.41 MT</b>
<b>Recoverable from Seam VI Central part(Proven + Probable)</b>	<b>16,540 kT*</b>	<b>16.54 MT</b>
<b>Coal Production in July 2019</b>	<b>113.01 kT</b>	<b>0.11 MT</b>
<b>Cumulative Production as of July 2019</b>	<b>10,860 kT</b>	<b>10.86 MT</b>
<b>Remaining Reserve</b>	<b>5,680 kT</b>	<b>5.68 MT</b>

*NOTE: Reserve figure based on Mines and Minerals Development Report ,HCU PwC*

\*Figure from BCMCL, M/S Wardell Armstrong. According to Mines and Minerals Development Report ,HCU, PwC this figure is 64.8 Mt

## Barapukuria Coal Mine-MPM and P Contract (BCMCL)

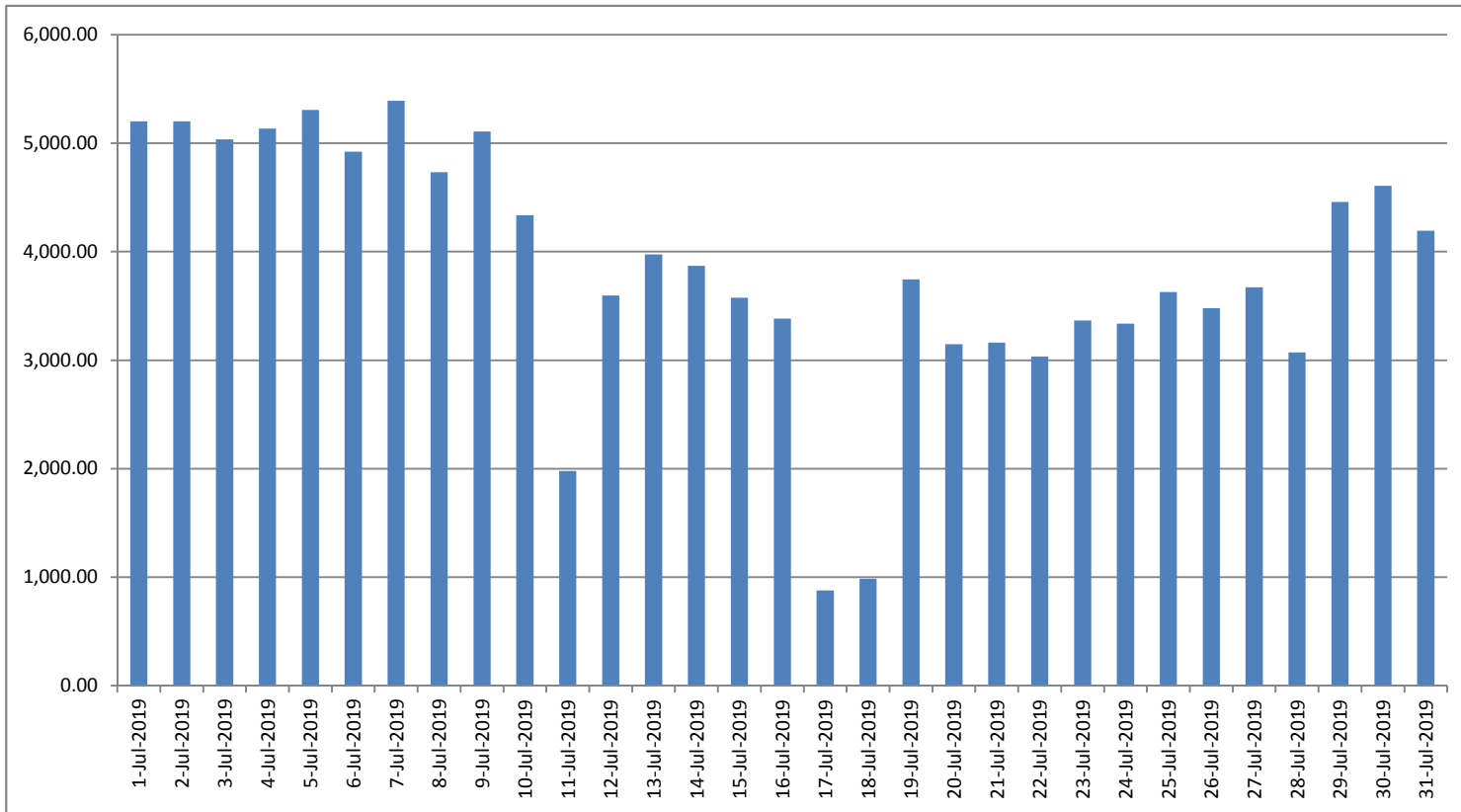
### Measurement Record: Surface Belt Weigher

Measurement Period: July 2019

Day wise data	Consortium Daily Output (ton)	Consortium Cumulative Total	BCMCL Daily Output	BCMCL Cumulative Total	Remarks
1-Jul-2019	5,200.75	5,200.75	5,200.75	5,200.75	
2-Jul-2019	5,200.25	10,401.00	5,200.25	10,401.00	
3-Jul-2019	5,034.25	15,435.25	5,034.25	15,435.25	
4-Jul-2019	5,134.50	20,569.75	5,134.50	20,569.75	
5-Jul-2019	5,306.75	25,876.50	5,306.75	25,876.50	
6-Jul-2019	4,922.50	30,799.00	4,922.50	30,799.00	
7-Jul-2019	5,391.50	36,190.50	5,391.50	36,190.50	
8-Jul-2019	4,731.00	40,921.50	4,731.00	40,921.50	
9-Jul-2019	5,107.50	46,029.00	5,107.50	46,029.00	
10-Jul-2019	4,337.00	50,366.00	4,337.00	50,366.00	
11-Jul-2019	1,979.75	52,345.75	1,979.75	52,345.75	
12-Jul-2019	3,595.25	55,941.00	3,595.25	55,941.00	
13-Jul-2019	3,975.00	59,916.00	3,975.00	59,916.00	
14-Jul-2019	3,871.00	63,787.00	3,871.00	63,787.00	
15-Jul-2019	3,574.25	67,361.25	3,574.25	67,361.25	
16-Jul-2019	3,382.00	70,743.25	3,382.00	70,743.25	
17-Jul-2019	877.75	71,621.00	877.75	71,621.00	
18-Jul-2019	987.00	72,608.00	987.00	72,608.00	
19-Jul-2019	3,744.50	76,352.50	3,744.50	76,352.50	
20-Jul-2019	3,147.25	79,499.75	3,147.25	79,499.75	
21-Jul-2019	3,161.25	82,661.00	3,161.25	82,661.00	
22-Jul-2019	3,033.25	85,694.25	3,033.25	85,694.25	
23-Jul-2019	3,366.25	89,060.50	3,366.25	89,060.50	
24-Jul-2019	3,335.50	92,396.00	3,335.50	92,396.00	
25-Jul-2019	3,629.25	96,025.25	3,629.25	96,025.25	
26-Jul-2019	3,478.25	99,503.50	3,478.25	99,503.50	
27-Jul-2019	3,671.75	103,175.25	3,671.75	103,175.25	
28-Jul-2019	3,072.50	106,247.75	3,072.50	106,247.75	
29-Jul-2019	4,457.75	110,705.50	4,457.75	110,705.50	
30-Jul-2019	4,606.75	115,312.25	4,606.75	115,312.25	
31-Jul-2019	4,193.00	119,505.25	4,193.00	119,505.25	

less Difference in Water Content:	6496.43
Less Out of Seam dilution:	0
Water treatment plant coal	0
<b>Output (tons) measured by Belt</b>	<b>113,008.82</b>
Tonnes mined in DARR	0
Net Output after removing DARR	113,008.82

## Barapukuria Coal Mine Daywise Data Graph for July 2019



আসুন, যানবাহনসমূহকে অটোগ্যাসে রূপান্তর করি...

জাতীয় সম্পদ প্রাকৃতিক গ্যাস সাশ্রয় করি...

facebook

"Energy misused, cannot be excused"

আমাদের ঘরে যদি এখনো কয়েল স্টার্টার যুক্ত টিউবলাইট থেকে থাকে, আসুন আজই LED টিউবলাইট দ্বারা প্রতিস্থাপন করি।

HYDROCARBON UNIT ON FACEBOOK

“আসুন আমাদের জাতীয় সম্পদ প্রাকৃতিক গ্যাস সাশ্রয় করি”

১। **LPG** ব্যবহার করুন..

অবৈধ গ্যাস সংযোগ থেকে বিরত থাকুন

২। **CNG** নয়, অকটেন দিয়ে গাড়ি চালান...

গাড়ির ইঞ্জিনের আয়ুষ্কাল বাড়ান

চলুন আজই যানবাহনসমূহ AUTO GAS (LPG) এ রূপান্তর করি...

- \* CNG এর তুলনায় LPG কনভারশনে ৫০% কম খরচ হয়
- \* ৩-৫ মিনিটে ট্যাংকে ফুয়েল ভর্তি হয়, লম্বা লাইনে দাঁড়িয়ে অপেক্ষা করার প্রয়োজন পরে না
- \* CNG এর তুলনায় সিলিন্ডারে জায়গা, ওজন ও প্রেশার কম দরকার
- \* রক্ষণাবেক্ষণের খরচ কম
- \* পেট্রলের তুলনায় AUTO GAS -এ খরচ প্রায় ৫০% কম
- \* গ্যাসোলিন ও ডিজেলের তুলনায় নিঃসরণ কম

# Hydrocarbon Unit

Energy & Mineral Resources Division  
Ministry of Power, Energy & Mineral Resources  
153, Pioneer Road  
Segunbagicha, Dhaka-1000  
www.hcuro.gov.bd