

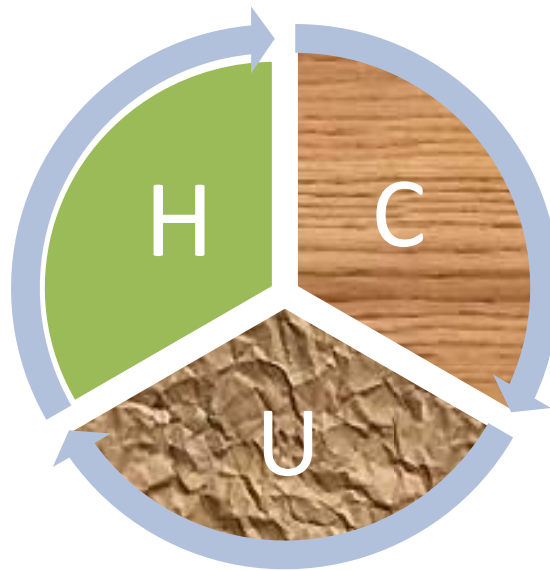


HYDROCARBON UNIT

Energy and Mineral Resources Division

Gas and Coal Reserve & Production

December 2020



Gas Reserve & Production at a glance

| | | |
|--------------------------------------------------------------------------|---|------------------------|
| Gas Initially in Place (GIIP) | : | 40,092.19 Bcf |
| Recoverable (2P) | : | 30,055.40 Bcf |
| Cumulative Production as of December 2020 | : | 18,242.77 Bcf |
| Remaining Reserve up to December 2020 | : | 11,812.63 Bcf |
| Gas Production in December 2020 | : | 77.32 Bcf |
| National Oil Company (NOC's) production in December 2020 | : | 26.03 Bcf |
| International Oil Company (IOC's) production in December 2020 | : | 51.29 Bcf |
| No. of National Oil Company (NOC's) in December 2020 | : | 3 (BGFCL, BAPEX, SGFL) |
| No. of International Oil Company (IOC's) in December 2020 | : | 2 (Chevron, Tullow) |
| Total gas fields of National Oil Company (NOC) in December 2020 | : | 21 |
| Total gas fields of International Oil Company (IOC) in December 2020 | : | 5 |
| Total gas wells of National Oil Company (NOC) in December 2020 | : | 115 |
| Total gas wells of International Oil Company (IOC) in December 2020 | : | 60 |
| No. of National Oil Company (NOC's) gas production well in December 2020 | : | 70 |
| No. of Intl. Oil Company (IOC's) gas production well in December 2020 | : | 42 |
| No. of National Oil company (NOC's) suspended well in December 2020 | : | 45 |
| No. of International Oil company (IOC's) suspended well in December 2020 | : | 18 |
| Total LNG Import in December 2020 | : | 13.18 Bcf |
| Total LNG Import from July 2020 to December 2020 | : | 103.01 Bcf |
| Cumulative LNG Import from August 2018 | : | 421.77 Bcf |

Executive Summary of December 2020

Total gas and condensate Production in December 2020 were 77.32 Bcf and 312513.26 Bbl. In the previous month i.e. November 2020, gas and condensate production were 74.61 Bcf and 304652.15 Bbl and in the same month of the previous year i.e. December 2019, total gas and condensate production were 78.18 Bcf and 334886 Bbl respectively. The National Oil Companies (NOC's) and International Oil Companies (IOC's) Produced 26.03 Bcf and 51.29 Bcf gas respectively in December 2020. During the previous month i.e. November 2020, gas production by the National Oil Companies (NOC's) and International Oil Companies (IOC's) were 24.98 Bcf and 49.63 Bcf respectively. In the month of December 2020, Bibiyana gas field Produced 41.38 Bcf gas and it ranked top among the gas producers. Average production from the field during the month of December 2020 was 1335 Mmcf. It is noted that Bibiyana gas field Produced 39.91 Bcf in November 2020.

During the month of December 2020 total production of condensate was 312513.26 Bbl compared to 304652.15 Bbl in the previous month i.e. November 2020. Bibiyana gas field Produced 230121 Bbl condensate and ranked top while Jalalabad ranked 2nd by producing 32627 Bbl.

In the month of December 2020 total coal production was 103819.69 Ton. In the previous month i.e. November 2020 total coal production was 51073.02 Ton. It indicates that 52746.67 Ton more Coal was produced compared to previous month.

Total LNG import in December 2020 was 13.18 Bcf. As a result, Total LNG Import in this FY is 103.01 Bcf and cumulative LNG import stands on 421.77 Bcf from August 2018.

Table of Contents

| Gas Report | Page No. |
|---------------------------------------------------------------------------------|-----------------|
| Summary | 1 |
| summary of Reserve and Production | 2 |
| Production comparison between November 2020 & December 2020 | 3 |
| Production per well & production reserve ratio | 4 |
| Monthly Production by Fields & Wells up to December 2020 | 5-12 |
| Monthly Condensate Production by Fields up to December 2020 | 13-14 |
| Monthly Water Production by Fields from December 2020 | 15-16 |
| Conditions of Field and Well up to December 2020 | 17-21 |
| Chart | |
| Well-wise Production of All fields in 2018-19 | 22 |
| Reserve, Production and Remaining Reserve as of December 2020 | 23 |
| Daily Average Gas Production from January 2013 to December 2020 | 24 |
| Field wise Daily Average Production as of December 2020 | 25 |
| Well wise Daily Average Production-BGFCL as of December 2020 | 26 |
| Well wise Daily Average Production-BAPEX and SGFL, December 2020 | 27 |
| Well wise Daily Average Production-IOC and JVA, December 2020 | 28 |
| Comparison of Field wise avg Gas Production between November 20 & December 20 | 29 |
| Daily Average Production by Operator, December 2020 | 30 |
| Comparison of Operator wise daily avg Production between November 20 & December | 31 |
| Daily Average Production – National vs IOC’s, December 2020 | 32 |
| Daily avg Gas Production- National vs IOC’s between November 20 & December 20 | 33 |
| Daily Average Production IOC’s and JVA, December 2020 | 34 |
| Monthly Condensate Production, December 2020 | 35 |
| Coal Report | |
| Summary | 36-37 |
| Barapukuria Coal Mine-MPM and P Contract (BCMCL) | 38 |
| Barapukuria Coal Mine Day wise Data Graph for December 2020 | 39 |

Summary of Reserve, Production & Import As of December 2020

| | | |
|------------------------------------------------------|----------------------|------------------|
| Gas Initially Place (Proven + Probable) | 40,092.19 Bcf | 40.09 Tcf |
| Recoverable (Proven + Probable) | 30,055.40 Bcf | 30.06 Tcf |
| Gas Production in December 2020 | 77.32 Bcf | 0.08 Tcf |
| Cumulative Gas Production as of December 2020 | 18,242.77 Bcf | 18.24 Tcf |
| Remaining Reserve | 11,812.63 Bcf | 11.81 Tcf |

NOTE: Reserve figure based on "Updated Report on Bangladesh Gas Reserve Estimation 2010", prepared by Gustavson Associates LLC, USA

| | | |
|---------------------------------------------------------|-------------------|-----------------|
| Total LNG Import in December 2020 | 13.18 Bcf | 0.01 Tcf |
| Total LNG Import from July 2020 to December 2020 | 103.01 Bcf | 0.10 Tcf |
| Cumulative LNG Import from August 2018 | 421.77 Bcf | 0.42 Tcf |

Summary of Reserve and Production

(As of December 2020)

Gas Bcf



| SI No. | Field | 2P | GIIP | 2P Reserve | Gas Prod. In Dec '20 | Cum. Gas Production | Remaining Reserve | Cum. Condensate Production |
|---------------------|-----------------|----|-----------------|-----------------|----------------------|---------------------|-------------------|----------------------------|
| 1 | Begumganj | | 47.0 | 33.0 | 0.17 | 5.6 | 27.4 | 1 |
| 2 | Shahbazpur | | 415.0 | 261.0 | 0.79 | 66.0 | 195.0 | 10 |
| 3 | Semutang | | 654.0 | 318.0 | 0.03 | 13.6 | 304.4 | 5 |
| 4 | Fenchuganj | | 483.0 | 329.0 | 0.16 | 161.8 | 167.2 | 116 |
| 5 | Salda Nadi | | 393.0 | 275.0 | 0.10 | 94.7 | 180.3 | 59 |
| 6 | Srikail* | | 230.0 | 161.0 | 1.26 | 103.9 | 57.1 | 184 |
| 7 | Sundalpur * | | 62.2 | 50.2 | 0.22 | 17.2 | 33.0 | 1 |
| 8 | Rupganj | | 48.0 | 33.6 | 0.00 | 0.7 | 32.9 | 1 |
| Bapex | | | 2,332.2 | 1,460.8 | 2.73 | 463.6 | 997.2 | 377 |
| 9 | Meghna | | 122.0 | 101.0 | 0.22 | 75.4 | 25.6 | 121 |
| 10 | Narshingdi | | 405.0 | 345.0 | 0.84 | 219.0 | 126.0 | 446 |
| 11 | Kamta | | 72.0 | 50.0 | 0.00 | 21.1 | 28.9 | 4 |
| 12 | Habiganj | | 3,981.0 | 2,787.0 | 5.63 | 2,567.9 | 219.1 | 143 |
| 13 | Bakhrabad | | 1,825.0 | 1,387.0 | 1.21 | 840.2 | 546.8 | 1,046 |
| 14 | Titas | | 9,039.0 | 7,582.0 | 12.49 | 4,968.3 | 2,613.7 | 5,483 |
| BGFCL | | | 15,444.0 | 12,252.0 | 20.39 | 8,691.9 | 3,560.1 | 7,243 |
| 15 | Sangu | | 976.0 | 771.0 | 0.00 | 489.5 | 281.5 | 37 |
| Santos/Cairn | | | 976.0 | 771.0 | 0.00 | 489.5 | 281.5 | 37 |
| 16 | Bibiyana** | | 8,383.0 | 4,532.0 | 41.38 | 4,506.4 | 25.6 | 27,029 |
| 17 | Moulavi Bazar** | | 494.0 | 494.0 | 0.58 | 333.9 | 160.1 | 119 |
| 18 | Jalalabad** | | 2,716.0 | 2,716.0 | 6.52 | 1,428.3 | 1,287.7 | 10,825 |
| Chevron | | | 11,593.0 | 7,742.0 | 48.49 | 6,268.7 | 1,473.3 | 37,973 |
| 19 | Feni | | 185.0 | 130.0 | 0.00 | 63.0 | 67.0 | 110 |
| Niko | | | 185.0 | 129.6 | 0.00 | 63.0 | 66.6 | 110 |
| 20 | Kailas Tila | | 3,463.0 | 2,880.0 | 1.30 | 766.4 | 2,113.6 | 8,143 |
| 21 | Sylhet | | 580.0 | 408.0 | 0.12 | 217.0 | 191.0 | 814 |
| 22 | Rashidpur | | 3,887.0 | 3,134.0 | 1.25 | 662.4 | 2,471.6 | 807 |
| 23 | Chattak | | 677.0 | 474.0 | 0.00 | 25.8 | 448.2 | 4 |
| 24 | Beani Bazar | | 225.0 | 137.0 | 0.25 | 101.3 | 35.7 | 1,664 |
| SGFL | | | 8,832.0 | 7,033.0 | 2.91 | 1,773.0 | 5,260.0 | 11,432 |
| 25 | Bangura | | 730.0 | 621.0 | 2.80 | 493.1 | 127.9 | 1,265 |
| Tullow | | | 730.0 | 621.0 | 2.80 | 493.1 | 127.9 | 1,265 |
| 26 | Kutubdia | | 65.0 | 46.0 | 0.00 | 0.0 | 46.0 | 0 |
| Total | | | 40,092.2 | 30,055.4 | 77.32 | 18,242.8 | 11,812.6 | 58,436 |

* Preliminary reserve estimated by BAPEX

** 2P reserve estimation by Petrobangla has crossed the limit. So 2P reserve is estimated as GIIP reserve now.

Production comparison between Nov'20 & Dec'20



| SI No. | Field | Gas Prod. (MMcf) in Nov'20 | Daily Avg. (MMcfd) in Nov'20 | Gas Prod. (MMcf) in Dec'20 | Daily Avg. (MMcfd) in Dec'20 |
|---------------------|---------------|----------------------------|------------------------------|----------------------------|------------------------------|
| 1 | Begumganj | 171 | 6 | 173 | 6 |
| 2 | Shahbazpur | 883 | 29 | 793 | 26 |
| 3 | Semutang | 26 | 1 | 26 | 1 |
| 4 | Fenchuganj | 148 | 5 | 156 | 5 |
| 5 | Salda Nadi | 106 | 4 | 104 | 3 |
| 6 | Srikail | 802 | 27 | 1258 | 41 |
| 7 | Sundalpur | 215 | 7 | 223 | 7 |
| 8 | Rupganj | 0 | 0 | 0 | 0 |
| Bapex | | 2351 | 78 | 2731 | 88 |
| 9 | Meghna | 235 | 8 | 220 | 7 |
| 10 | Narshingdi | 819 | 27 | 837 | 27 |
| 11 | Kamta | 0 | 0 | 0 | 0 |
| 12 | Habiganj | 5448 | 182 | 5630 | 182 |
| 13 | Bakhrabad | 1176 | 39 | 1212 | 39 |
| 14 | Titas | 12159 | 405 | 12492 | 403 |
| BGFCL | | 19836 | 661 | 20391 | 658 |
| 15 | Sangu | 0 | 0 | 0 | 0 |
| Santos/Cairn | | 0 | 0 | 0 | 0 |
| 16 | Bibiyana | 39914 | 1330 | 41379 | 1335 |
| 17 | Moulavi Bazar | 618 | 21 | 585 | 19 |
| 18 | Jalalabad | 6302 | 210 | 6524 | 210 |
| Chevron | | 46835 | 1561 | 48488 | 1564 |
| 19 | Feni | 0 | 0 | 0 | 0 |
| Niko | | 0 | 0 | 0 | 0 |
| 20 | Kailas Tila | 1274 | 42 | 1300 | 42 |
| 21 | Sylhet | 113 | 4 | 116 | 4 |
| 22 | Rashidpur | 1169 | 39 | 1249 | 40 |
| 23 | Chattak | 0 | 0 | 0 | 0 |
| 24 | Beani Bazar | 237 | 8 | 245 | 8 |
| SGFL | | 2793 | 93 | 2911 | 94 |
| 25 | Bangura | 2793 | 93 | 2804 | 90 |
| Tullow | | 2793 | 93 | 2804 | 90 |
| 26 | Kutubdia | 0 | 0 | 0 | 0 |
| Total | | 74608 | 2487 | 77325 | 2494 |

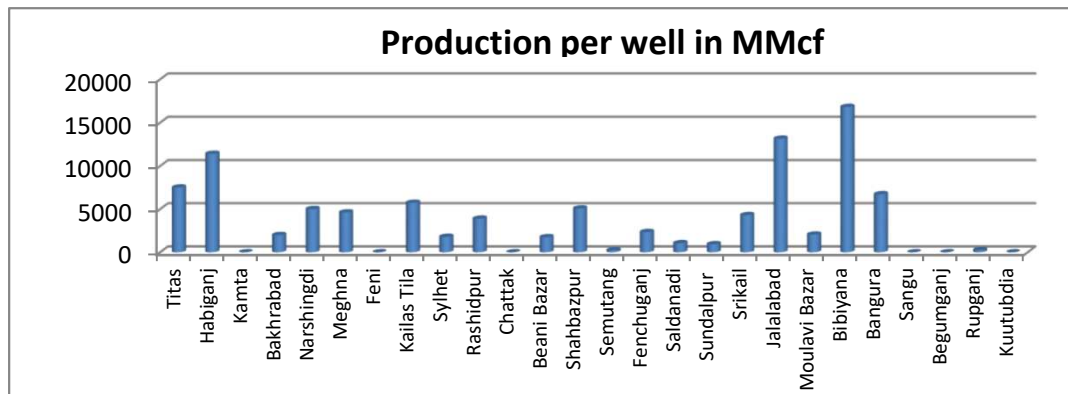
Production per well & production reserve ratio



HYDROCARBON UNIT

Energy & Mineral Resources Division

| | No of production well | Total 2p- Recoverable | 2019-20 production | production per well mmcf | production reserve ratio |
|---------------|-----------------------|-----------------------|--------------------|--------------------------|--------------------------|
| Titas | 26 | 7582 | 153.5 | 5903.85 | 0.020 |
| Habiganj | 8 | 2787 | 67.89 | 8486.25 | 0.024 |
| Kamta | 0 | 50 | 0 | 0.00 | 0.000 |
| Bakhrabad | 7 | 1387 | 15.02 | 2145.71 | 0.011 |
| Narshingdi | 2 | 345 | 9.09 | 4545.00 | 0.026 |
| Meghna | 1 | 101 | 3.1 | 3100.00 | 0.031 |
| Feni | 0 | 130 | 0 | 0.00 | 0.000 |
| Kailas Tila | 4 | 2880 | 20.19 | 5047.50 | 0.007 |
| Sylhet | 1 | 408 | 1.36 | 1360.00 | 0.003 |
| Rashidpur | 5 | 3134 | 17.53 | 3506.00 | 0.006 |
| Chattak | 0 | 474 | 0 | 0.00 | 0.000 |
| Beani Bazar | 1 | 137 | 3.06 | 3060.00 | 0.022 |
| Shahbazpur | 4 | 261 | 16.8 | 4200.00 | 0.064 |
| Semutang | 2 | 318 | 0.32 | 160.00 | 0.001 |
| Fenchuganj | 2 | 329 | 1.42 | 710.00 | 0.004 |
| Saldanadi | 2 | 275 | 2.17 | 1085.00 | 0.008 |
| Sundalpur | 1 | 50.2 | 2.6 | 2600.00 | 0.052 |
| Srikail | 3 | 161 | 11.19 | 3730.00 | 0.070 |
| Jalalabad | 7 | 2716 | 73.11 | 10444.29 | 0.027 |
| Moulavi Bazar | 4 | 494 | 5.33 | 1332.50 | 0.011 |
| Bibiyana | 26 | 4532 | 447.87 | 17225.77 | 0.099 |
| Bangura | 5 | 621 | 33.45 | 6690.00 | 0.054 |
| Sangu | 0 | 771 | 0 | 0.00 | 0.000 |
| Begumganj | 1 | 33 | 1.94 | 0.00 | 0.059 |
| Rupganj | 0 | 33.6 | 0 | 0.00 | 0.000 |
| Kuutubdia | 0 | 46 | 0 | 0.00 | 0.000 |
| Total | 112 | 30055.8 | 886.94 | 7919.11 | 0.030 |



Monthly Production by Field and Well upto December- 2020



HYDROCARBON UNIT
Energy & Mineral Resources Division

Figures in mmscf

| Well | Jan | Feb | Mar | Apr | May | Jun | Jul | Aug | Sep | Oct | Nov | Dec | Total | Cumulative | 2019 | 2018 | 2017 |
|----------------------------|--------------|--------------|--------------|--------------|--------------|--------------|--------------|--------------|--------------|--------------|--------------|--------------|---------------|----------------|---------------|---------------|---------------|
| Field : Bakharabad | | | | | | | | | | | | | | | | | |
| BKB-1 | 432 | 401 | 427 | 342 | 420 | 414 | 416 | 398 | 412 | 428 | 397 | 407 | 4,892 | 149,354 | 3,295 | 0 | 0 |
| BKB-2 | 27 | 13 | 23 | 0 | 0 | 0 | 0 | 0 | 0 | 0 | 0 | 0 | 63 | 87,012 | 378 | 445 | 543 |
| BKB-3 | 143 | 139 | 144 | 150 | 159 | 158 | 165 | 166 | 158 | 162 | 157 | 162 | 1,864 | 164,467 | 1,757 | 1,989 | 2,249 |
| BKB-4 | 0 | 0 | 0 | 0 | 0 | 0 | 0 | 0 | 0 | 0 | 0 | 0 | 0 | 55,872 | 0 | | |
| BKB-5 | 146 | 137 | 146 | 133 | 148 | 142 | 146 | 141 | 143 | 144 | 137 | 142 | 1,703 | 62,271 | 1,757 | 1,822 | 1,847 |
| BKB-6 | 0 | 0 | 0 | 0 | 0 | 0 | 0 | 0 | 0 | 0 | 0 | 0 | 0 | 50,069 | 0 | 0 | |
| BKB-7 | 0 | 0 | 0 | 0 | 0 | 0 | 0 | 0 | 0 | 0 | 0 | 0 | 0 | 107,750 | 0 | 0 | 0 |
| BKB-8 | 238 | 228 | 234 | 246 | 253 | 251 | 261 | 257 | 251 | 253 | 247 | 253 | 2,969 | 131,795 | 2,565 | 2,017 | 3,462 |
| BKB-9 | 208 | 194 | 201 | 187 | 185 | 176 | 177 | 178 | 167 | 171 | 158 | 170 | 2,171 | 25,878 | 2,585 | 3,332 | 3,637 |
| BKB-10 | 91 | 88 | 90 | 85 | 85 | 83 | 84 | 84 | 81 | 84 | 80 | 79 | 1,015 | 5,781 | 1,092 | 1,297 | 1,453 |
| Field Total: | 1,285 | 1,200 | 1,263 | 1,142 | 1,250 | 1,223 | 1,249 | 1,223 | 1,211 | 1,243 | 1,176 | 1,212 | 14,678 | 840,248 | 13,429 | 10,903 | 13,190 |
| Daily Avg.(mmscfd) | 41 | 41 | 41 | 38 | 40 | 41 | 40 | 39 | 40 | 40 | 39 | 39 | 40 | | 37 | 30 | 36 |
| Field : Bangura | | | | | | | | | | | | | | | | | |
| Bangura-1 | 331 | 306 | 281 | 22 | 284 | 319 | 340 | 356 | 361 | 368 | 340 | 332 | 3,640 | 97,032 | 4,138 | 4,615 | 4,914 |
| Bangura-2 | 431 | 398 | 335 | 0 | 298 | 415 | 417 | 405 | 421 | 430 | 399 | 392 | 4,340 | 89,190 | 5,312 | 6,802 | 7,837 |
| Bangura-3 | 517 | 478 | 373 | 0 | 317 | 498 | 487 | 398 | 466 | 476 | 468 | 479 | 4,958 | 107,880 | 6,195 | 7,265 | 8,662 |
| Bangura-6 | 295 | 268 | 169 | 0 | 182 | 286 | 261 | 191 | 224 | 229 | 225 | 1,370 | 3,700 | 16,165 | 3,518 | 4,847 | 4,100 |
| Bangura-5 | 1,584 | 1,475 | 1,570 | 996 | 1,304 | 1,492 | 1,521 | 1,512 | 1,440 | 1,437 | 1,360 | 230 | 15,921 | 182,840 | 16,177 | 8,410 | 9,699 |
| Field Total: | 3,158 | 2,924 | 2,728 | 1,019 | 2,384 | 3,009 | 3,027 | 2,862 | 2,912 | 2,940 | 2,793 | 2,804 | 32,559 | 493,107 | 35,340 | 31,940 | 35,212 |
| Daily Avg.(mmscfd) | 102 | 101 | 88 | 34 | 77 | 100 | 98 | 92 | 97 | 95 | 93 | 90 | 89 | | 97 | 88 | 96 |
| Field : Beani Bazar | | | | | | | | | | | | | | | | | |
| BB-1 | 0 | 0 | 0 | 0 | 0 | 0 | 0 | 0 | 0 | 0 | 0 | 0 | 0 | 35,481 | 0 | 0 | 1,023 |
| BB-2 | 251 | 244 | 254 | 245 | 251 | 243 | 251 | 252 | 243 | 223 | 237 | 245 | 2,940 | 65,811 | 3,135 | 3,276 | 3,282 |
| Field Total: | 251 | 244 | 254 | 245 | 251 | 243 | 251 | 252 | 243 | 223 | 237 | 245 | 2,940 | 101,291 | 3,135 | 3,276 | 4,306 |
| Daily Avg.(mmscfd) | 8 | 8 | 8 | 8 | 8 | 8 | 8 | 8 | 8 | 7 | 8 | 8 | 8 | | 9 | 9 | 12 |
| Field : Bibiyana | | | | | | | | | | | | | | | | | |
| BY-1 | 3,116 | 2,351 | 2,124 | 1,342 | 1,888 | 2,454 | 2,309 | 2,127 | 2,209 | 2,145 | 2,070 | 2,149.97 | 26,283 | 423,623 | 29,455 | 21,743 | 35,595 |
| BY-2 | 1,633 | 1,245 | 1,219 | 585 | 775 | 1,203 | 1,107 | 950 | 1,070 | 1,009 | 956 | 995 | 12,748 | 304,636 | 17,462 | 21,388 | 23,957 |
| BY-3 | 973 | 1,026 | 897 | 934 | 1,737 | 1,417 | 370 | 1,742 | 1,688 | 1,688 | 1,278 | 575.22 | 14,326 | 254,157 | 4,562 | 6,249 | 9,904 |
| BY-4 | 2,693 | 1,966 | 2,002 | 1,181 | 2,048 | 2,052 | 1,902 | 1,691 | 1,821 | 1,771 | 1,722 | 1,810.94 | 22,661 | 227,991 | 24,793 | 28,559 | 6,571 |
| BY-5 | 35 | 471 | 474 | 64 | 59 | 527 | 681 | 513 | 700 | 570 | 631 | 716 | 5,441 | 183,576 | 6,168 | 6,131 | 8,117 |
| BY-6 | 781 | 672 | 786 | 210 | 608 | 737 | 558 | 468 | 810 | 709 | 570 | 511.72 | 7,419 | 238,055 | 9,140 | 11,057 | 11,879 |
| BY-7 | 2,530 | 1,866 | 1,736 | 1,256 | 2,092 | 1,986 | 1,860 | 1,692 | 1,791 | 1,713 | 1,633 | 1,717.73 | 21,873 | 293,038 | 26,581 | 23,155 | 32,874 |
| BY-8 | 192 | 700 | 730 | 516 | 54 | 502 | 822 | 769 | 804 | 1,342 | 1,626 | 1,718.55 | 9,776 | 152,557 | 8,538 | 8,921 | 12,486 |
| BY-9 | 43 | 384 | 346 | 222 | 15 | 292 | 492 | 465 | 531 | 1,358 | 1,612 | 1,701.29 | 7,462 | 137,243 | 5,164 | 4,093 | 6,247 |

Monthly Production by Field and Well upto December- 2020



HYDROCARBON UNIT

Energy & Mineral Resources Division

Figures in mmscf

| Well | Jan | Feb | Mar | Apr | May | Jun | Jul | Aug | Sep | Oct | Nov | Dec | Total | Cumulative | 2019 | 2018 | 2017 |
|---------------------------|----------------------|--------------|--------------|--------------|--------------|--------------|--------------|--------------|--------------|--------------|--------------|--------------|----------------|------------------|----------------|----------------|----------------|
| BY-10 | 130 | 1,839 | 1,841 | 1068 | 123 | 1,264 | 1880 | 1,680 | 1,759 | 1,716 | 1642 | 1735.17 | 16,678 | 374,672 | 22,997 | 30,954 | 32,967 |
| BY-11 | 149 | 2,068 | 1,878 | 1090 | 374 | 1,506 | 2087 | 1,921 | 1,972 | 2,070 | 1989 | 2091.86 | 19,194 | 148,138 | 8,983 | 12,147 | 6,813 |
| BY-12 | 134 | 1,797 | 1,921 | 1289 | 418 | 1,407 | 1909 | 1,723 | 1,820 | 1,768 | 1702 | 1786.11 | 17,675 | 164,777 | 24,399 | 6,835 | 8,284 |
| BY-13 | 1,058 | 1,685 | 1,587 | 1609 | 1,953 | 2,036 | 2003 | 1,773 | 1,756 | 2,123 | 2104 | 2206.97 | 21,893 | 105,637 | 10,785 | 13,171 | 11,842 |
| BY-14 | 869 | 629 | 635 | 756 | 892 | 759 | 790 | 739 | 794 | 740 | 761 | 837.118 | 9,202 | 108,806 | 8,991 | 11,523 | 15,354 |
| BY-15 | 2,110 | 1,566 | 1,575 | 1253 | 1,972 | 1,972 | 2227 | 1,998 | 1,461 | 1,447 | 1394 | 1453.43 | 20,428 | 139,274 | 21,925 | 24,295 | 19,111 |
| BY-16 | 994 | 726 | 782 | 879 | 905 | 794 | 816 | 746 | 767 | 1,217 | 1792 | 2130.99 | 12,548 | 83,866 | 10,246 | 9,264 | 12,541 |
| BY-17 | 1,782 | 1,309 | 1,429 | 1429 | 1,702 | 1,490 | 1485 | 1,248 | 1,306 | 1,279 | 1290 | 1360.06 | 17,109 | 113,584 | 18,604 | 17,603 | 15,412 |
| BY-18 | 2,743 | 1,895 | 2,266 | 2328 | 2,311 | 2,282 | 2260 | 2,031 | 2,097 | 2,039 | 1962 | 2070.13 | 26,284 | 174,095 | 30,009 | 31,890 | 29,509 |
| BY-19 | 2,536 | 2,006 | 1,725 | 1298 | 2,529 | 2,130 | 2115 | 1,867 | 1,972 | 1,915 | 1849 | 1944.84 | 23,886 | 83,171 | 27,207 | 8,144 | 9,859 |
| BY-20 | 2,388 | 1,846 | 1,952 | 1171 | 1,904 | 1,994 | 1953 | 1,728 | 1,836 | 1,741 | 1693 | 1765.51 | 21,972 | 82,517 | 22,699 | 7,840 | 6,533 |
| BY-21 | 2,260 | 1,692 | 1,652 | 810 | 1,878 | 1,789 | 1771 | 1,561 | 1,648 | 1,639 | 1920 | 2016.67 | 20,638 | 64,440 | 8,577 | 9,670 | 13,246 |
| BY-22 | 1,889 | 1,391 | 1,507 | 693 | 1,592 | 1,473 | 1455 | 1,270 | 1,421 | 1,378 | 1317 | 1386.61 | 16,774 | 144,066 | 19,492 | 24,755 | 27,093 |
| BY-23 | 2,487 | 1,833 | 1,860 | 1213 | 2,162 | 1,873 | 1998 | 1,502 | 1,851 | 1,760 | 1728 | 1799.56 | 22,066 | 99,431 | 25,318 | 32,043 | 15,333 |
| BY-24 | 1,042 | 766 | 837 | 929 | 991 | 880 | 878 | 794 | 815 | 795 | 776 | 801.734 | 10,304 | 78,737 | 10,269 | 13,268 | 13,484 |
| BY-25 | 2,581 | 1,856 | 2,045 | 182 | 2,047 | 2,159 | 2134 | 1,887 | 1,979 | 1,928 | 1865 | 1961.43 | 22,625 | 154,602 | 26,797 | 28,306 | 30,331 |
| BY-26 | 2,896 | 2,018 | 2,352 | 1832 | 2,545 | 2,353 | 2337 | 1,958 | 2,173 | 2,118 | 2032 | 2134.06 | 26,748 | 171,741 | 29,429 | 33,853 | 30,446 |
| Field Total: | 40045 | 37602 | 38162 | 26138 | 35571 | 39333 | 40198 | 36842 | 38852 | 39977 | 39914 | 41379 | 454,012 | 4,506,430 | 458,589 | 446,855 | 445,787 |
| Daily Avg.(mmscfd) | 1292 | 1,297 | 1231 | 871 | 1147 | 1311 | 1297 | 1,188 | 1,295 | 1,290 | 1,330 | 1,335 | 1,240 | | 1,256 | 1,224 | 1,221 |
| Field : | Chattak | | | | | | | | | | | | | | | | |
| Ch-1 | Production Suspended | | | | | | | | | | | | | 25,834 | | | |
| Field Total: | 0 | | | 0 | 0 | 0 | 0 | 0 | 0 | 0 | 0 | 0 | 25,834 | | | | |
| Daily Avg.(mmscfd) | 0 | | | 0 | 0 | 0 | 0 | 0 | 0 | 0 | 0 | 0 | 0 | 0 | 0 | 0 | |
| Field : | Fenchuganj | | | | | | | | | | | | | | | | |
| Fenchuganj-2 | 0 | 0 | 0 | 0 | 0 | 0 | 0 | 0 | 0 | 0 | 0 | 0 | 0 | 38,169 | 0 | 0 | 0 |
| Fenchuganj-3 | 101 | 102 | 101 | 100 | 103 | 119 | 152 | 174 | 156 | 135 | 148 | 156 | 1,547 | 94,062 | 1,877 | 3,186 | 6,192 |
| Fenchuganj-4 | 3 | 0 | 0 | 0 | 0 | 0 | 0 | 0 | 0 | 0 | 0 | 0 | 3 | 29,582 | 305 | 809 | 441 |
| Field Total: | 105 | 102 | 101 | 100 | 103 | 119 | 152 | 174 | 156 | 135 | 148 | 156 | 1,550 | 161,813 | 2,182 | 3,994 | 6,633 |
| Daily Avg.(mmscfd) | 3 | 4 | 3 | 3 | 3 | 4 | 5 | 6 | 5 | 4 | 5 | 5 | 4 | | 6 | 11 | 18 |
| Field : | Feni | | | | | | | | | | | | | | | | |
| Feni-1 | Production Suspended | | | | | | | | 0 | 0 | 0 | 34,214 | | | | | |
| Feni-2 | Production Suspended | | | | | | | | 0 | 0 | 0 | 6,119 | | | | | |
| Feni-3 | Production Suspended | | | | | | | | 0 | 0 | 0 | 2,176 | | | | | |

Monthly Production by Field and Well upto December- 2020



HYDROCARBON UNIT
Energy & Mineral Resources Division

Figures in mmscf

| Well | Jan | Feb | Mar | Apr | May | Jun | Jul | Aug | Sep | Oct | Nov | Dec | Total | Cumulative | 2019 | 2018 | 2017 |
|---------------------------|----------------------|--------------|--------------|--------------|--------------|--------------|--------------|--------------|--------------|--------------|--------------|--------------|---------------|------------------|---------------|---------------|---------------|
| Feni-4 | Production Suspended | | | | | | | | 0 | 0 | | | | 14,386 | | | |
| Feni-5 | Production Suspended | | | | | | | | 0 | 0 | | | | 6,127 | | | |
| Field Total: | | | | | | | | | | | | | 63,023 | | | | |
| Daily Avg.(mmscfd) | | | | | | | | | | | | | | | | | |
| Field : | Habiganj | | | | | | | | | | | | | | | | |
| Hbj-1 | 301 | 292 | 311 | 299 | 313 | 305 | 314 | 310 | 301 | 310 | 300 | 296 | 3,651 | 285,883 | 4,124 | 2,207 | 0 |
| Hbj-2 | 0 | 0 | 0 | 0 | 0 | 0 | 0 | 0 | 0 | 0 | 0 | 0 | 0 | 275,704 | 0 | 0 | 0 |
| Hbj-3 | 870 | 813 | 848 | 724 | 853 | 842 | 870 | 868 | 842 | 836 | 779 | 807 | 9,952 | 398,056 | 10,947 | 13,155 | 13,151 |
| Hbj-4 | 870 | 813 | 848 | 724 | 853 | 842 | 870 | 868 | 842 | 836 | 779 | 807 | 9,952 | 392,514 | 10,947 | 13,155 | 13,151 |
| Hbj-5 | 752 | 725 | 750 | 604 | 749 | 749 | 767 | 714 | 692 | 714 | 689 | 714 | 8,620 | 315,270 | 8,977 | 9,497 | 9,497 |
| Hbj-6 | 451 | 432 | 446 | 366 | 419 | 438 | 454 | 465 | 451 | 466 | 450 | 467 | 5,305 | 172,863 | 5,349 | 5,487 | 5,491 |
| Hbj-7 | 1,185 | 1,108 | 1,142 | 948 | 1,158 | 1,124 | 1,177 | 1,166 | 1,133 | 1,174 | 1,149 | 1,208 | 13,671 | 281,062 | 14,272 | 14,533 | 14,565 |
| Hbj-8 | 0 | 0 | 0 | 0 | 0 | 0 | 0 | 0 | 0 | 0 | 0 | 0 | 0 | 11,023 | 0 | 0 | 0 |
| Hbj-9 | 0 | 0 | 0 | 0 | 0 | 0 | 0 | 0 | 0 | 0 | 0 | 0 | 0 | 52,652 | 0 | 0 | 0 |
| Hbj-10 | 852 | 815 | 841.5 | 698 | 819.1 | 826 | 865 | 859 | 815 | 865 | 837 | 868 | 9,961 | 273,517 | 10,423 | 13,928 | 14,058 |
| Hbj-11 | 549 | 524 | 540 | 448.2 | 525 | 515 | 542.5 | 548 | 482 | 494 | 464 | 462 | 6,094 | 109,322 | 6,920 | 9,579 | 10,398 |
| Field Total: | 5,830 | 5,521 | 5,727 | 4,811 | 5,689 | 5,641 | 5,859 | 5,799 | 5,556 | 5,695 | 5,448 | 5,630 | 67,206 | 2,567,866 | 71,959 | 81,540 | 80,313 |
| Daily Avg.(mmscfd) | 188 | 190 | 185 | 160 | 184 | 188 | 189 | 187 | 185 | 184 | 182 | 182 | 184 | | 197 | 223 | 220 |
| Field : | Jalalabad | | | | | | | | | | | | | | | | |
| JB-1 | 795 | 710 | 696 | 432 | 764 | 856 | 806 | 795 | 829 | 874 | 814 | 854 | 9,224 | 264,184 | 9,191 | 10,469 | 9,142 |
| JB-2 | 987 | 881 | 864 | 637 | 945 | 1,069 | 1,006 | 964 | 1,034 | 1,029 | 1,181 | 1,050 | 11,644 | 302,640 | 11,400 | 12,973 | 14,517 |
| JB-3 | 1,315 | 1,174 | 1,152 | 906 | 1,138 | 1,369 | 1,327 | 1,301 | 1,358 | 1,409 | 1,308 | 1,375 | 15,132 | 370,919 | 15,263 | 17,399 | 19,162 |
| JB-4 | 658 | 584 | 576 | 446 | 665 | 609 | 544 | 586 | 620 | 684 | 653 | 731 | 7,355 | 291,121 | 4,766 | 5,821 | 7,045 |
| JB-6 | 1,315 | 1,174 | 1,059 | 477 | 1,128 | 1,403 | 1,351 | 1,396 | 1,383 | 1,401 | 1,328 | 1,398 | 14,814 | 89,160 | 15,021 | 17,364 | 19,524 |
| JB-7 | 978 | 881 | 683 | 129 | 13 | 0 | 0 | 2 | 6 | 2 | 4 | 22 | 2,718 | 43,505 | 11,396 | 13,053 | 10,324 |
| JB-8 | 1,063 | 949 | 867 | 299 | 994 | 1,102 | 1,059 | 1,013 | 1,083 | 1,103 | 1,015 | 1,095 | 11,643 | 66,801 | 11,228 | 12,793 | 14,513 |
| Field Total: | 7,111 | 6,352 | 5,896 | 3,325 | 5,648 | 6,407 | 6,095 | 6,058 | 6,312 | 6,501 | 6,302 | 6,524 | 72,531 | 1,428,330 | 78,265 | 89,872 | 94,226 |
| Daily Avg.(mmscfd) | 229 | 219 | 190 | 111 | 182 | 214 | 197 | 195 | 210 | 210 | 210 | 210 | 198 | | 214 | 246 | 258 |
| Field : | Kailas Tila | | | | | | | | | | | | | | | | |
| KTL-1 | 0 | 0 | 0 | 0 | 0 | 0 | 0 | 0 | 0 | 0 | 0 | 0 | 0 | 205,181 | 371 | 462 | 0 |

Monthly Production by Field and Well upto December- 2020



HYDROCARBON UNIT
Energy & Mineral Resources Division

Figures in mmscf

| Well | Jan | Feb | Mar | Apr | May | Jun | Jul | Aug | Sep | Oct | Nov | Dec | Total | Cumulative | 2019 | 2018 | 2017 |
|------------------------------|----------------------|--------------|--------------|--------------|--------------|--------------|--------------|--------------|--------------|--------------|--------------|--------------|---------------|----------------|---------------|---------------|---------------|
| KTL-2 | 587 | 555 | 608 | 591 | 615 | 592 | 601 | 593 | 441 | 374 | 361 | 372 | 6,291 | 191,604 | 7,166 | 7,190 | 7,242 |
| KTL-3 | 134 | 101 | 34 | 0 | 0 | 0 | 0 | 0 | 0 | 0 | 0 | 0 | 269 | 140,672 | 2,583 | 2,947 | 3,255 |
| KTL-4 | 189 | 178 | 189 | 181 | 183 | 177 | 182 | 179 | 169 | 174 | 167 | 171 | 2,139 | 100,873 | 2,639 | 3,336 | 3,680 |
| KTL-5 | 0 | 0 | 0 | 0 | 0 | 0 | 0 | 0 | 0 | 0 | 0 | 0 | 0 | 17,923 | 0 | 0 | 0 |
| KTL-6 | 781 | 744 | 798 | 768 | 799 | 764 | 783 | 783 | 748 | 777 | 746 | 758 | 9,249 | 109,380 | 9,042 | 8,950 | 9,086 |
| KTL-7 | 0 | 0 | 0 | 0 | 0 | 0 | 0 | 0 | 0 | 0 | 0 | 0 | 0 | 816 | 0 | 0 | 0 |
| Field Total: | 1,691 | 1,578 | 1,630 | 1,540 | 1,598 | 1,533 | 1,566 | 1,555 | 1,359 | 1,325 | 1,274 | 1,300 | 17,949 | 766,449 | 21,801 | 22,886 | 23,263 |
| Daily Avg.(mmscfd) | 55 | 54 | 53 | 51 | 52 | 51 | 51 | 50 | 45 | 43 | 42 | 42 | 49 | | 60 | 63 | 64 |
| Field : Kamta | | | | | | | | | | | | | | | | | |
| Kamta-1 | Production Suspended | | | | | | | | | | | | | 21,139 | | | |
| Field Total: | 0 | | | | | | | | | | | | | 21,139 | | | |
| Daily Avg.(mmscfd) | | | | | | | | | | | | | | | | | |
| Field : Meghna | | | | | | | | | | | | | | | | | |
| M-1 | 257 | 250 | 262 | 251 | 246 | 241 | 248 | 243 | 236 | 256 | 235 | 220 | 2,945 | 75,376 | 3,458 | 4,538 | 4,625 |
| Field Total: | 257 | 250 | 262 | 251 | 246 | 241 | 248 | 243 | 236 | 256 | 235 | 220 | 2,945 | 75,376 | 3,458 | 4,538 | 4,625 |
| Daily Avg.(mmscfd) | 8 | 9 | 8 | 8 | 8 | 8 | 8 | 8 | 8 | 8 | 8 | 7 | 8 | | 9 | 12 | 13 |
| Field : Moulavi Bazar | | | | | | | | | | | | | | | | | |
| MV Bazar-2 | 125 | 115 | 85 | 0 | 59 | 166 | 164 | 115 | 118 | 94 | 90 | 85 | 1,217 | 56,025 | 770 | 2,302 | 2,866 |
| MV Bazar-3 | 426 | 357 | 256 | 0 | 137 | 413 | 386 | 375 | 450 | 360 | 354 | 332 | 3,848 | 163,678 | 2,022 | 3,712 | 4,705 |
| MV Bazar-4 | 36 | 0 | 0 | 0 | 0 | 0 | 0 | 0 | 7 | 93 | 78 | 54 | 266 | 59,381 | 1,047 | 3,103 | 3,945 |
| MV Bazar-5 | 0 | 0 | 0 | 0 | 0 | 0 | 0 | 0 | 0 | 0 | 0 | 0 | 0 | 66 | | | |
| MV Bazar-6 | 20 | 103 | 98 | 0 | 28 | 7 | 10 | 0 | -3 | 56 | 96 | 113 | 529 | 18,763 | 1,886 | 1,734 | 1,676 |
| MV Bazar-7 | 0 | 0 | 0 | 0 | 0 | 0 | 0 | 0 | 0 | 0 | 0 | 0 | 0 | 5,648 | 4 | 21 | 152 |
| MV Bazar-9 | 0 | 0 | 0 | 0 | 0 | 0 | 0 | 0 | 0 | 0 | 0 | 0 | 0 | 30,337 | 1 | 1 | 0 |
| Field Total: | 607 | 575 | 439 | 0 | 224 | 587 | 560 | 490 | 572 | 603 | 618 | 585 | 5,859 | 333,897 | 5,730 | 10,872 | 13,345 |
| Daily Avg.(mmscfd) | 20 | 20 | 14 | 0 | 7 | 20 | 18 | 16 | 19 | 19 | 21 | 19 | 16 | | 16 | 30 | 37 |
| Field : Narshingdi | | | | | | | | | | | | | | | | | |
| N-1 | 504 | 482 | 495 | 419 | 503 | 501 | 518 | 524 | 487 | 513 | 502 | 513 | 5,960 | 156,218 | 5,663 | 6,181 | 6,279 |
| N-2 | 323 | 308 | 308 | 193 | 313 | 311 | 322 | 311 | 309 | 322 | 317 | 324 | 3,661 | 62,763 | 3,732 | 3,705 | 3,962 |
| Field Total: | 828 | 790 | 803 | 612 | 816 | 812 | 839 | 835 | 796 | 835 | 819 | 837 | 9,621 | 218,981 | 9,395 | 9,886 | 10,241 |

Monthly Production by Field and Well upto December- 2020



HYDROCARBON UNIT
Energy & Mineral Resources Division

Figures in mmscf

| Well | Jan | Feb | Mar | Apr | May | Jun | Jul | Aug | Sep | Oct | Nov | Dec | Total | Cumulative | 2019 | 2018 | 2017 |
|---------------------------|----------------------|--------------|--------------|--------------|--------------|--------------|--------------|--------------|--------------|--------------|--------------|--------------|---------------|----------------|---------------|---------------|---------------|
| Daily Avg.(mmscfd) | 27 | 27 | 26 | 20 | 26 | 27 | 27 | 27 | 27 | 27 | 27 | 27 | 26 | | 26 | 27 | 28 |
| Field : Rashidpur | | | | | | | | | | | | | | | | | |
| RP-1 | 531 | 510 | 546 | 524 | 544 | 528 | 544 | 532 | 535 | 561 | 538 | 555 | 6,447 | 179,815 | 6,305 | 6,505 | 6,625 |
| RP-2 | 0 | 0 | 0 | 0 | 0 | 0 | 0 | 0 | 0 | 0 | 0 | 0 | 0 | 82,474 | 0 | | |
| RP-3 | 284 | 265 | 283 | 273 | 282 | 274 | 283 | 283 | 273 | 282 | 35 | 75 | 2,891 | 137,542 | 3,443 | 3,541 | 3,730 |
| RP-4 | 241 | 224 | 235 | 220 | 223 | 212 | 222 | 219 | 209 | 219 | 212 | 220 | 2,655 | 133,436 | 2,886 | 3,227 | 3,516 |
| RP-5 | 0 | 0 | 0 | 0 | 0 | 0 | 0 | 0 | 0 | 0 | 0 | 0 | 0 | 25,647 | 0 | | |
| RP-6 | 0 | 0 | 0 | 0 | 0 | 0 | 0 | 0 | 0 | 0 | 0 | 0 | 0 | 9,983 | 0 | 0 | 0 |
| RP-7 | 145 | 134 | 141 | 134 | 136 | 131 | 138 | 137 | 124 | 136 | 133 | 139 | 1,628 | 67,740 | 1,786 | 2,096 | 2,225 |
| RP-8 | 283 | 264 | 279 | 271 | 279 | 271 | 282 | 278 | 249 | 262 | 252 | 260 | 3,228 | 25,776 | 3,515 | 3,696 | 3,977 |
| Field Total: | 1,483 | 1,397 | 1,484 | 1,422 | 1,464 | 1,414 | 1,470 | 1,448 | 1,389 | 1,459 | 1,169 | 1,249 | 16,849 | 662,413 | 17,936 | 19,065 | 20,074 |
| Daily Avg.(mmscfd) | 48 | 48 | 48 | 47 | 47 | 47 | 47 | 47 | 46 | 47 | 39 | 40 | 46 | | 49 | 52 | 55 |
| Field : Salda Nadi | | | | | | | | | | | | | | | | | |
| Salda-1 | 0 | 0 | 0 | 0 | 0 | 0 | 0 | 0 | 0 | 0 | 0 | 0 | 0 | 36,904 | 0 | 0 | 0 |
| Salda-2 | 0 | 0 | 0 | 0 | 0 | 0 | 0 | 0 | 0 | 0 | 0 | 0 | 0 | 28,495 | 0 | 0 | 0 |
| Salda-3 | 177 | 206 | 211 | 153 | 162 | 155 | 139 | 112 | 104 | 102 | 95 | 96 | 1,712 | 29,102 | 1,809 | 1,067 | 1,514 |
| Salda-4 | 0 | 10 | 10 | 10 | 10 | 6 | 7 | 5 | 7 | 7 | 11 | 8 | 92 | 238 | 29 | 70 | 14 |
| Field Total: | 177 | 216 | 222 | 163 | 173 | 161 | 146 | 117 | 110 | 109 | 106 | 104 | 1,804 | 94,738 | 1,838 | 1,137 | 1,527 |
| Daily Avg.(mmscfd) | 6 | 7 | 7 | 5 | 6 | 5 | 5 | 4 | 4 | 4 | 4 | 3 | 5 | | 5 | 3 | 4 |
| Field : Sangu | | | | | | | | | | | | | | | | | |
| Sangu-1 | 0 | 0 | 0 | 0 | 0 | 0 | 0 | 0 | 0 | 0 | 0 | 0 | 0 | 116,191 | 0 | 0 | 0 |
| Sangu-3z | 0 | 0 | 0 | 0 | 0 | 0 | 0 | 0 | 0 | 0 | 0 | 0 | 0 | 131,796 | 0 | 0 | 0 |
| Sangu-4 | 0 | 0 | 0 | 0 | 0 | 0 | 0 | 0 | 0 | 0 | 0 | 0 | 0 | 87,280 | | | |
| Sangu-5 | 0 | 0 | 0 | 0 | 0 | 0 | 0 | 0 | 0 | 0 | 0 | 0 | 0 | 61,674 | | | |
| Sangu-7 | 0 | 0 | 0 | 0 | 0 | 0 | 0 | 0 | 0 | 0 | 0 | 0 | 0 | 18,202 | | | |
| Sangu-8 | 0 | 0 | 0 | 0 | 0 | 0 | 0 | 0 | 0 | 0 | 0 | 0 | 0 | 37,619 | | | |
| Sangu-9 | 0 | 0 | 0 | 0 | 0 | 0 | 0 | 0 | 0 | 0 | 0 | 0 | 0 | 30,638 | 0 | 0 | 0 |
| Sangu-10 | Production Suspended | | | | | | 0 | 0 | 0 | 0 | 0 | 0 | 0 | | | | |
| Sangu-11 | 0 | 0 | 0 | 0 | 0 | 0 | 0 | 0 | 0 | 0 | 0 | 0 | 0 | 6,067 | 0 | 0 | 0 |
| Field Total: | 0 | 0 | 0 | 0 | 0 | 0 | 0 | 0 | 0 | 0 | 0 | 0 | 0 | 489,467 | 0 | 0 | 0 |

Monthly Production by Field and Well upto December- 2020



HYDROCARBON UNIT
Energy & Mineral Resources Division

Figures in mmscf

| Well | Jan | Feb | Mar | Apr | May | Jun | Jul | Aug | Sep | Oct | Nov | Dec | Total | Cumulative | 2019 | 2018 | 2017 |
|---------------------------|----------------------|--------------|--------------|--------------|--------------|--------------|--------------|--------------|--------------|------------|------------|--------------|---------------|----------------|---------------|---------------|---------------|
| Daily Avg.(mmscfd) | 0 | 0 | 0 | 0 | 0 | 0 | 0 | 0 | 0 | 0 | 0 | 0 | 0 | | 0 | 0 | 0 |
| Field : | Semutang | | | | | | | | | | | | | | | | |
| Semutang-5 | 12 | 10 | 11 | 10 | 10 | 9 | 10 | 10 | 7 | 5 | 5 | 5 | 104 | 12,308 | 140 | 291 | 471 |
| Semutang-6 | 17 | 16 | 17 | 16 | 17 | 16 | 17 | 18 | 14 | 15 | 21 | 20 | 204 | 1,321 | 161 | 84 | 66 |
| Field Total: | 29 | 26 | 28 | 26 | 28 | 26 | 27 | 27 | 21 | 20 | 26 | 26 | 308 | 13,630 | 301 | 375 | 537 |
| Daily Avg.(mmscfd) | 1 | 1 | 1 | 1 | 1 | 1 | 1 | 1 | 1 | 1 | 1 | 1 | 1 | | 1 | 1 | 1 |
| Field : | Shahbazpur | | | | | | | | | | | | | | | | |
| Shahbazpur-1 | 230 | 0 | 0 | 16 | 0 | 0 | 0 | 0 | 7 | 0 | 0 | 0 | 254 | 22,486 | 874 | 134 | 4,835 |
| Shahbazpur-2 | 4 | 178 | 424 | 204 | 475 | 654 | 730 | 709 | 701 | 459 | 387 | 203 | 5,129 | 22,407 | 6,196 | 6,650 | 4,243 |
| Shahbazpur-3 | 626 | 592 | 635 | 628 | 658 | 562 | 622 | 169 | 229 | 496 | 495 | 589 | 6,301 | | 6,668 | 5,222 | 1,162 |
| Shahbazpur-4 | 355 | 342 | 455 | 206 | 40 | 67 | 0 | 483 | 414 | 9 | 1 | 0 | 2,374 | 21,141 | 5,764 | 6,936 | 1,801 |
| Field Total: | 1,216 | 1,113 | 1,514 | 1,054 | 1,174 | 1,283 | 1,352 | 1,361 | 1,352 | 965 | 883 | 793 | 14,058 | 66,034 | 19,501 | 18,943 | 12,041 |
| Daily Avg.(mmscfd) | 39 | 38 | 49 | 35 | 38 | 43 | 44 | 44 | 45 | 31 | 29 | 26 | 38 | | 53 | 52 | 33 |
| Field | Srikail | | | | | | | | | | | | | | | | |
| Srikail-2 | 426 | 387 | 400 | 338 | 347 | 344 | 351 | 358 | 373 | 386 | 378 | 363 | 4,450 | 47,682 | 5,288 | 5,154 | 5,384 |
| Srikail-3 | 319 | 301 | 298 | 236 | 263 | 281 | 281 | 283 | 278 | 290 | 284 | 245 | 3,360 | 42,179 | 3,988 | 4,273 | 4,944 |
| Srikail-4 | 236 | 226 | 225 | 156 | 182 | 208 | 201 | 190 | 148 | 0 | 140 | 649 | 2,561 | 14,031 | 3,026 | 2,971 | 3,439 |
| Field Total: | 981 | 914 | 923 | 730 | 792 | 832 | 833 | 830 | 798 | 676 | 802 | 1,258 | 10,371 | 103,892 | 12,301 | 12,398 | 13,767 |
| Daily Avg.(mmscfd) | 32 | 32 | 30 | 24 | 26 | 28 | 27 | 27 | 27 | 22 | 27 | 41 | 28 | | 34 | 34 | 38 |
| Field : | Sundalpur | | | | | | | | | | | | | | | | |
| Sundalpur -1 | 0 | 0 | 0 | 0 | 0 | 0 | 0 | 0 | 0 | 0 | 0 | 0 | 0 | 9,809 | 0 | 0 | 0 |
| Sundalpur -2 | 223 | 207 | 222 | 216 | 224 | 218 | 229 | 227 | 223 | 224 | 215 | 223 | 2,649 | 7,398 | 2,572 | 2,176 | 0 |
| Field Total: | 223 | 207 | 222 | 216 | 224 | 218 | 229 | 227 | 223 | 224 | 215 | 223 | 2,649 | 17,207 | 2,572 | 2,176 | 0 |
| Daily Avg.(mmscfd) | 7 | 7 | 7 | 7 | 7 | 7 | 7 | 7 | 7 | 7 | 7 | 7 | 7 | | 7 | 6 | 0 |
| Field : | Sylhet | | | | | | | | | | | | | | | | |
| Sylhet-3 | Production Suspended | | | | | | | | | | | | | 89,032 | | | |
| Sylhet-6 | Production Suspended | | | | | | | | | | | | | 91,748 | | | |
| Sylhet-7 | 114 | 109 | 117 | 112 | 117 | 114 | 117 | 117 | 113 | 117 | 113 | 116 | 1,377 | 29,741 | 1,373 | 1,622 | 2,061 |
| Surma-1 | 0 | 0 | 0 | 0 | 0 | 0 | 0 | 0 | 0 | 0 | 0 | 0 | 0 | 6,528 | 0 | 0 | 249 |

Monthly Production by Field and Well upto December- 2020



HYDROCARBON UNIT
Energy & Mineral Resources Division

Figures in mmscf

| Well | Jan | Feb | Mar | Apr | May | Jun | Jul | Aug | Sep | Oct | Nov | Dec | Total | Cumulative | 2019 | 2018 | 2017 |
|---------------------------|---------------|---------------|---------------|--------------|--------------|---------------|---------------|---------------|---------------|---------------|---------------|---------------|----------------|------------------|----------------|----------------|----------------|
| Field Total: | 114 | 109 | 117 | 112 | 117 | 114 | 117 | 117 | 113 | 117 | 113 | 116 | 1,377 | 217,049 | 1,373 | 1,622 | 2,309 |
| Daily Avg.(mmscfd) | 4 | 4 | 4 | 4 | 4 | 4 | 4 | 4 | 4 | 4 | 4 | 4 | 4 | | 4 | 4 | 6 |
| Field : | Titas | | | | | | | | | | | | | | | | |
| Titas-1 | 548 | 510 | 505 | 176 | 291 | 503 | 516 | 521 | 507 | 520 | 506 | 523 | 5,626 | 451,902 | 6,648 | 8,516 | 7,897 |
| Titas-2 | 912 | 848 | 786 | 273 | 403 | 839 | 870 | 872 | 848 | 856 | 840 | 870 | 9,217 | 455,599 | 10,877 | 11,522 | 11,506 |
| Titas-3 | 0 | | 0 | 0 | 0 | 0 | 0 | 0 | 0 | 0 | 0 | 0 | 0 | 314,888 | 0 | 0 | |
| Titas-4 | 906 | 837 | 804 | 364 | 358 | 846 | 873 | 890 | 869 | 883 | 847 | 879 | 9,356 | 390,820 | 11,013 | 11,726 | 11,798 |
| Titas-5 | 1,003 | 926 | 743 | 206 | 359 | 906 | 920 | 896 | 896 | 895 | 878 | 898 | 9,526 | 449,498 | 11,720 | 11,838 | 11,869 |
| Titas-6 | 881 | 821 | 777 | 247 | 404 | 924 | 963 | 933 | 872 | 877 | 853 | 849 | 9,401 | 382,143 | 9,613 | 12,030 | 12,029 |
| Titas-7 | 854 | 814 | 117 | 0 | 0 | 0 | 0 | 0 | 0 | 0 | 0 | 0 | 1,784 | 356,893 | 10,244 | 11,919 | 11,707 |
| Titas-8 | 525 | 454 | 451 | 225 | 330 | 442 | 474 | 445 | 439 | 437 | 431 | 463 | 5,115 | 283,602 | 5,851 | 6,154 | 6,889 |
| Titas-9 | 6 | 468 | 504 | 436 | 487 | 443 | 464 | 486 | 591 | 618 | 625 | 643 | 5,770 | 288,459 | 6,200 | 6,706 | 8,246 |
| Titas-10 | 671 | 624 | 646 | 431 | 518 | 644 | 677 | 669 | 638 | 633 | 613 | 631 | 7,397 | 214,266 | 7,869 | 7,612 | 7,431 |
| Titas-11 | 844 | 781 | 778 | 732 | 773 | 800 | 822 | 786 | 784 | 794 | 765 | 781 | 9,440 | 265,175 | 8,834 | 9,998 | 10,276 |
| Titas-12 | 468 | 440 | 454 | 442 | 458 | 457 | 467 | 459 | 449 | 452 | 428 | 455 | 5,428 | 111,442 | 5,239 | 5,160 | 5,168 |
| Titas-13 | 0 | 0 | 0 | 0 | 0 | 0 | 0 | 0 | 0 | 0 | 0 | 0 | 0 | 194,541 | 4,449 | 6,952 | 7,879 |
| Titas-14 | 509 | 474 | 479 | 401 | 410 | 424 | 429 | 418 | 395 | 364 | 345 | 318 | 4,966 | 161,021 | 6,070 | 7,203 | 8,309 |
| Titas-15 | 406 | 376 | 393 | 363 | 390 | 363 | 357 | 349 | 335 | 335 | 314 | 326 | 4,306 | 148,798 | 4,978 | 5,543 | 7,973 |
| Titas-16 | 590 | 555 | 543 | 386 | 416 | 559 | 568 | 560 | 544 | 559 | 536 | 558 | 6,373 | 159,927 | 7,209 | 8,605 | 10,060 |
| Titas-17 | 493 | 455 | 392 | 244 | 426 | 428 | 404 | 421 | 436 | 420 | 422 | 428 | 4,969 | 50,266 | 5,794 | 6,335 | 7,011 |
| Titas-18 | 521 | 485 | 420 | 248 | 389 | 440 | 420 | 439 | 459 | 445 | 442 | 456 | 5,166 | 49,284 | 6,113 | 6,664 | 7,168 |
| Titas-19 | 469 | 437 | 426 | 247 | 286 | 402 | 440 | 427 | 410 | 413 | 392 | 406 | 4,754 | 38,395 | 5,592 | 6,115 | 6,106 |
| Titas-20 | 311 | 293 | 308 | 207 | 336 | 336 | 338 | 317 | 346 | 339 | 337 | 351 | 3,817 | 26,234 | 3,589 | 3,914 | 3,635 |
| Titas-21 | 254 | 243 | 254 | 216 | 234 | 236 | 244 | 256 | 241 | 232 | 237 | 244 | 2,892 | 15,160 | 3,036 | 2,995 | 2,800 |
| Titas-22 | 220 | 206 | 222 | 215 | 230 | 207 | 213 | 173 | 193 | 177 | 190 | 189 | 2,436 | 29,987 | 3,133 | 4,158 | 4,336 |
| Titas-27 | 495 | 464 | 392 | 237 | 395 | 445 | 433 | 460 | 479 | 473 | 472 | 490 | 5,233 | 39,674 | 5,602 | 5,827 | 6,136 |
| Titas-23 | 462 | 426 | 460 | 444 | 444 | 428 | 438 | 439 | 422 | 464 | 447 | 453 | 5,328 | 20,412 | 5,079 | 5,594 | 4,410 |
| Titas-24 | 147 | 141 | 144 | 131 | 138 | 118 | 96 | 94 | 91 | 54 | 37 | 49 | 1,238 | 9,019 | 2,789 | 2,709 | 2,283 |
| Titas-25 | 471 | 440 | 456 | 406 | 431 | 444 | 469 | 471 | 456 | 466 | 452 | 463 | 5,424 | 24,062 | 6,424 | 6,324 | 5,622 |
| Titas-26 | 792 | 740 | 751 | 580 | 707 | 762 | 785 | 780 | 769 | 778 | 750 | 768 | 8,961 | 36,854 | 8,628 | 9,672 | 9,210 |
| Field Total: | 13,757 | 13,255 | 12,205 | 7,856 | 9,612 | 12,394 | 12,676 | 12,561 | 12,471 | 12,484 | 12,159 | 12,492 | 143,923 | 4,968,321 | 172,591 | 191,792 | 197,756 |
| Daily Avg.(mmscfd) | 444 | 457 | 394 | 262 | 310 | 413 | 409 | 405 | 416 | 403 | 405 | 403 | 393 | | 473 | 525 | 542 |

Monthly Production by Field and Well upto December- 2020



HYDROCARBON UNIT
Energy & Mineral Resources Division

Figures in mmscf

| Well | Jan | Feb | Mar | Apr | May | Jun | Jul | Aug | Sep | Oct | Nov | Dec | Total | Cumulative | 2019 | 2018 | 2017 |
|-----------------------------|------------|------------|------------|------------|------------|------------|------------|------------|------------|------------|------------|------------|--------------|--------------|--------------|------------|------------|
| Field : Begumganj | | | | | | | | | | | | | | | | | |
| Begumganj-3 | 173 | 162 | 169 | 123 | 114 | 163 | 166 | 174 | 176 | 177 | 171 | 173 | 1,940 | 5,559 | 2,150 | 593 | 0 |
| Field Total: | 173 | 162 | 169 | 123 | 114 | 163 | 166 | 174 | 176 | 177 | 171 | 173 | 1,940 | 5,559 | 2,150 | 593 | 0 |
| Daily Avg.(mmscfd) | 6 | 6 | 5 | 4 | 4 | 5 | 5 | 6 | 6 | 6 | 6 | 6 | 5 | | 6 | 2 | 0 |
| Field : Rupganj | | | | | | | | | | | | | | | | | |
| Rupganj-1 | 0 | 0 | 0 | | | | | | | | | | 0 | 679 | 0 | 0 | 679 |
| Field Total: | 0 | 0 | 0 | 0 | 0 | 0 | 0 | 0 | 0 | 0 | 0 | 0 | 0 | 679 | 0 | 0 | 679 |
| Daily Avg.(mmscfd) | 0 | 0 | 0 | 0 | 0 | 0 | 0 | 0 | 0 | 0 | 0 | 0 | 0 | | 0 | 0 | 2 |
| Grand Total (in Bcf) | 79.32 | 74.54 | 74.15 | 50.88 | 67.48 | 75.75 | 77.06 | 73.20 | 74.86 | 75.96 | 74.61 | 77.32 | 875.1 | 18,242.77 | 933.8 | 964.7 | 979.8 |
| Daily Avg.(mmscfd) | 2,559 | 2,570 | 2,392 | 1,696 | 2,177 | 2,525 | 2486 | 2,361 | 2,495 | 2,450 | 2,487 | 2,494 | 2,391 | | 2,558 | 2,643 | 2,684 |

Monthly Condensate Production by Fields upto December 2020



| Field Name | Jan-20 | Feb-20 | Mar-20 | Apr-20 | May-20 | Jun-20 | Jul-20 | Aug-20 | Sep-20 | Oct-20 | Nov-20 | Dec-20 | Total | Cumulative | 2019 | 2018 | 2017 | |
|---------------|----------------------|---------|---------|---------|---------|---------|---------|---------|---------|---------|---------|---------|-----------|------------|-----------|-----------|-----------|---|
| | | | | | | | | | | | | | | 000' bbl | | | | |
| Bakhrabad | 1,884 | 1,750 | 1,589 | 1,441 | 1,586 | 1,437 | 1,522 | 1,342 | 1,359 | 1,285 | 1,243 | 1,566 | 18,004 | 1,046 | 8,201 | 5,022 | 6,173 | |
| Daily Avg. | 61 | 60 | 51 | 48 | 51 | 48 | 49 | 43 | 45 | 41 | 41 | 51 | 49 | | 22 | 14 | 17 | |
| Bangura | 9,402 | 9,091 | 8,299 | 3,209 | 7,105 | 8,652 | 8,658 | 8,216 | 8,068 | 8,574 | 8,169 | 7,951 | 95,394 | 1,265 | 104,034 | 94,737 | 103,198 | |
| Daily Avg. | 303 | 313 | 268 | 107 | 229 | 288 | 279 | 265 | 269 | 277 | 272 | 256 | 261 | | 285 | 260 | 283 | |
| Beani Bazar | 4,054 | 3,913 | 4,033 | 3,836 | 3,892 | 3,760 | 3,846 | 3,844 | 3,674 | 3,702 | 3,647 | 3,860 | 46,061 | 1,664 | 50,497 | 51,187 | 68,202 | |
| Daily Avg. | 131 | 135 | 130 | 128 | 126 | 125 | 124 | 27 | 122 | 119 | 122 | 125 | 126 | | 138 | 140 | 187 | |
| Bibiyana | 264,088 | 253,166 | 252,073 | 177,105 | 223,283 | 248,751 | 243,288 | 211,371 | 215,272 | 231,093 | 231,022 | 230,121 | 2,780,633 | 27,029 | 3,094,275 | 3,267,318 | 3,283,757 | |
| Daily Avg. | 8,519 | 8,730 | 8,131 | 5,904 | 7,203 | 8,292 | 7,848 | 6,818 | 7,176 | 7,455 | 7,701 | 7,423 | 7,597 | | 8,477 | 8,952 | 8,997 | |
| Chattak | 0 | 0 | 0 | 0 | 0 | 0 | 0 | 0 | 0 | 0 | 0 | 0 | 0 | 4 | 0 | 0 | 0 | |
| Daily Avg. | 0 | 0 | 0 | 0 | 0 | 0 | 0 | 0 | 0 | 0 | 0 | 0 | 0 | | 0 | 0 | 0 | |
| Fenchuganj | 35 | 41 | 36 | 24 | 23 | 45 | 73 | 67 | 61 | 39 | 32 | 51 | 527 | 116 | 738 | 1,625 | 2,462 | |
| Daily Avg. | 1 | 1 | 1 | 1 | 1 | 2 | 2 | 2 | 2 | 1 | 1 | 2 | 1 | | 2 | 4 | 7 | |
| Feni | 0 | 0 | 0 | 0 | 0 | 0 | 0 | 0 | 0 | 0 | 0 | 0 | 0 | 110 | 0 | 0 | 0 | |
| Daily Avg. | 0 | 0 | 0 | 0 | 0 | 0 | 0 | 0 | 0 | 0 | 0 | 0 | 0 | | 0 | 0 | 0 | |
| Habiganj | 531 | 542 | 568 | 469 | 483 | 474 | 461 | 494 | 520 | 513 | 18 | 437 | 5,510 | 143 | 7,233 | 5,612 | 3,955 | |
| Daily Avg. | 17 | 19 | 18 | 16 | 16 | 16 | 15 | 16 | 17 | 17 | 1 | 14 | 15 | | 20 | 15 | 11 | |
| Jalalabad | 34,240 | 31,441 | 30,350 | 19,778 | 30,402 | 32,193 | 30,721 | 29,974 | 31,831 | 31,898 | 31,705 | 32,627 | 367,161 | 10,825 | 318,424 | 367,160 | 437,070 | |
| Daily Avg. | 1,105 | 1,084 | 979 | 659 | 981 | 1,073 | 991 | 967 | 1,061 | 1,029 | 1,057 | 1,052 | 1,003 | | 872 | 1,006 | 1,197 | |
| Kailas Tila | 12,599 | 12,646 | 13,590 | 16,327 | 16,462 | 12,667 | 14,327 | 12,022 | 16,898 | 16,858 | 16,087 | 16,726 | 177,210 | 8,143 | 170,713 | 189,620 | 203,979 | |
| Daily Avg. | 406 | 436 | 438 | 544 | 531 | 422 | 462 | 388 | 563 | 544 | 536 | 540 | 484 | | 468 | 520 | 559 | |
| Kamta | Production Suspended | | | | | | | | | | 0 | 0 | | 4 | | | | |
| Daily Avg. | | | | | | | | | | | 0 | 0 | | 0 | | 0 | 0 | 0 |
| Meghna | 575 | 529 | 606 | 572 | 550 | 541 | 562 | 553 | 564 | 561 | 541 | 498 | 6,652 | 121 | 7,098 | 7,947 | 7,741 | |
| Daily Avg. | 19 | 18 | 20 | 19 | 18 | 18 | 18 | 18 | 19 | 18 | 18 | 16 | 18 | | 19 | 22 | 21 | |
| Moulavi Bazar | 194 | 113 | 70 | 0 | 46 | 368 | 58 | 70 | 112 | 79 | 85 | 66 | 1,262 | 119 | 745 | 856 | 1,128 | |
| Daily Avg. | 6 | 4 | 2 | 0 | 1 | 12 | 2 | 2 | 4 | 3 | 3 | 2 | 3 | | 2 | 2 | 3 | |

Monthly Condensate Production by Fields upto December 2020



| Field Name | Jan-20 | Feb-20 | Mar-20 | Apr-20 | May-20 | Jun-20 | Jul-20 | Aug-20 | Sep-20 | Oct-20 | Nov-20 | Dec-20 | Total | Cumulative | 2019 | 2018 | 2017 |
|-----------------------------|-------------|-------------|-------------|------------|------------|------------|-------------|------------|------------|------------|------------|------------|--------------|---------------|--------------|--------------|--------------|
| | 000' bbl | | | | | | | | | | | | | | | | |
| Narshingdi | 1,269 | 1,165 | 1,170 | 1,104 | 1,173 | 1,138 | 1,179 | 1,138 | 1,120 | 1,143 | 1,137 | 1,171 | 13,907 | 446 | 14,029 | 15,797 | 16,656 |
| Daily Avg. | 41 | 40 | 38 | 37 | 38 | 38 | 38 | 37 | 37 | 37 | 38 | 38 | 38 | | 38 | 43 | 46 |
| Rashidpur | 1,472 | 1,367 | 1,471 | 1,362 | 1,394 | 1,300 | 1,412 | 1,265 | 759 | 1,347 | 871 | 1,029 | 15,049 | 807 | 16,268 | 14,393 | 10,723 |
| Daily Avg. | 47 | 47 | 47 | 45 | 45 | 43 | 46 | 41 | 25 | 43 | 29 | 33 | 41 | | 45 | 39 | 29 |
| Saldanadi | 24 | 20 | 24 | 20 | 22 | 22 | 27 | 21 | 13 | 15 | 16 | 15 | 240 | 59 | 302 | 137 | 225 |
| Daily Avg. | 1 | 1 | 1 | 1 | 1 | 1 | 1 | 1 | 0 | 0 | 1 | 0 | 1 | | 1 | 0 | 1 |
| Sangu | 0 | 0 | 0 | 0 | 0 | 0 | 0 | 0 | 0 | 0 | 0 | 0 | 0 | 37 | 0 | 0 | 0 |
| Daily Avg. | 0 | 0 | 0 | 0 | 0 | 0 | 0 | 0 | 0 | 0 | 0 | 0 | 0 | | 0 | 0 | 0 |
| Semutang | 0 | 0 | 0 | 0 | 0 | 0 | 0 | 0 | 0 | 0 | 0 | 0 | 0 | 5 | 4 | 26 | 99 |
| Daily Avg. | 0 | 0 | 0 | 0 | 0 | 0 | 0 | 0 | 0 | 0 | 0 | 0 | 0 | | 0 | 0 | 0 |
| Shahbazpur | 120 | 131 | 180 | 142 | 140 | 157 | 192 | 211 | 189 | 127 | 125 | 124 | 1,839 | 10 | 2,034 | 2,488 | 1,791 |
| Daily Avg. | 4 | 5 | 6 | 5 | 5 | 5 | 6 | 7 | 6 | 4 | 4 | 4 | 5 | | 6 | 7 | 5 |
| Srikail | 2,591 | 2,685 | 2,720 | 2,127 | 2,323 | 2,480 | 80 | 78 | 79 | 65 | 93 | 5,891 | 21,213 | 184 | 34,193 | 33,765 | 37,879 |
| Daily Avg. | 84 | 93 | 88 | 71 | 75 | 83 | 3 | 3 | 3 | 2 | 3 | 190 | 58 | | 94 | 93 | 104 |
| Sundalpur | 12 | 9 | 14 | 14 | 13 | 16 | 1 | 0 | 0 | 0 | 0 | 8 | 89 | 1 | 172 | 121 | 0 |
| Daily Avg. | 0 | 0 | 0 | 0 | 0 | 1 | 0 | 0 | 0 | 0 | 0 | 0 | 0 | | 0 | 0 | 0 |
| Sylhet | 900 | 901 | 897 | 851 | 764 | 721 | 692 | 667 | 621 | 655 | 660 | 652 | 8,982 | 814 | 9,691 | 10,277 | 15,593 |
| Daily Avg. | 29 | 31 | 29 | 28 | 25 | 24 | 22 | 22 | 21 | 21 | 22 | 21 | 25 | | 27 | 28 | 43 |
| Titas | 12,479 | 11,693 | 9,703 | 7,625 | 8,938 | 10,059 | 9,925 | 9,473 | 9,050 | 9,584 | 9,199 | 9,680 | 117,408 | 5,483 | 141,979 | 159,803 | 154,262 |
| Daily Avg. | 403 | 403 | 313 | 254 | 288 | 335 | 320 | 306 | 302 | 309 | 307 | 312 | 321 | | 389 | 438 | 423 |
| Begumganj | 63 | 53 | 57 | 46 | 41 | 62 | 2 | 2 | 2 | 2 | 2 | 50 | 380 | 1 | 711 | 201 | 0 |
| Daily Avg. | 2 | 0 | 0 | 0 | 0 | 2 | 0 | 0 | 0 | 0 | 0 | 2 | 1 | | 2 | 1 | 0 |
| Rupganj | 0 | 0 | 0 | 0 | 0 | 0 | 0 | 0 | 0 | 0 | 0 | 0 | 0 | 1 | 0 | 0 | 1,133 |
| Daily Avg. | 0 | 0 | 0 | 0 | 0 | 0 | 0 | 0 | 0 | 0 | 0 | 0 | 0 | | 0 | 0 | 3 |
| Total (000'bbl) | 347 | 331 | 327 | 236 | 299 | 325 | 317 | 281 | 290 | 308 | 305 | 313 | 3,678 | 58,436 | 3,981 | 4,228 | 4,356 |
| Daily Avg. (000'bbl) | 11.2 | 11.4 | 10.6 | 7.9 | 9.6 | 11 | 10.2 | 9.1 | 9.7 | 9.9 | 10 | 10 | 10 | | 10.9 | 11.6 | 11.9 |

Note: Historical condensate figure of Sangu available from 2006. Sylhet available from August 1964

Monthly Water Production by Fields in December 2020



HYDROCARBON UNIT
Energy & Mineral Resources Division

| Field Name | Jan-20 | Feb-20 | Mar-20 | Apr-20 | May-20 | Jun-20 | Jul-20 | Aug-20 | Sep-20 | Oct-20 | Nov-20 | Dec-20 | Total | 2019 | |
|--------------|--------|--------|--------|--------|--------|--------|--------|--------|--------|--------|--------|--------|---------|---------|---------|
| Bakhrabad | 2,447 | 2,122 | 2,440 | 2,003 | 1,945 | 1,887 | 1,981 | 2,015 | 1,922 | 2,080 | 1,899 | 1,171 | 23,912 | 25,025 | 28,218 |
| Daily Avg. | 79 | 73 | 79 | 67 | 63 | 63 | 64 | 65 | 64 | 67 | 63 | 38 | 65 | 69 | 77 |
| Bangura | 3,530 | 3,282 | 3,009 | 801 | 2,602 | 3,333 | 3,420 | 3,255 | 3,287 | 3,780 | 5,244 | 6,478 | 42,021 | 38,297 | 43,917 |
| Daily Avg. | 114 | 113 | 97 | 27 | 84 | 111 | 110 | 105 | 110 | 122 | 175 | 209 | 115 | 105 | 120 |
| Beani Bazar | 12,271 | 12,741 | 14,234 | 13,937 | 14,419 | 14,507 | 15,439 | 15,601 | 15,139 | 15,940 | 15,710 | 16,589 | 176,527 | 130,468 | 109,854 |
| Daily Avg. | 396 | 439 | 459 | 465 | 465 | 484 | 498 | 503 | 505 | 514 | 524 | 535 | 482 | 357 | 301 |
| Bibiyana | 16,735 | 15,786 | 16,483 | 12,167 | 15,155 | 17,888 | 17,641 | 17,154 | 19,583 | 19,848 | 19,542 | 21,959 | 209,941 | 194,287 | 194,651 |
| Daily Avg. | 540 | 544 | 532 | 406 | 489 | 596 | 569 | 553 | 653 | 640 | 651 | 708 | 574 | 532 | 533 |
| Chattak | 0 | 0 | 0 | 0 | 0 | 0 | 0 | 0 | 0 | 0 | 0 | 0 | | | |
| Daily Avg. | 0 | 0 | 0 | 0 | 0 | 0 | 0 | 0 | 0 | 0 | 0 | 0 | 0 | 0 | 0 |
| Fenchuganj | 1,743 | 1,881 | 1,573 | 1,721 | 1,911 | 2,194 | 2,646 | 3,151 | 3,067 | 2,699 | 2,878 | 3,190 | 28,653 | 34,864 | 74,969 |
| Daily Avg. | 56 | 65 | 51 | 57 | 62 | 73 | 85 | 102 | 102 | 87 | 96 | 103 | 78 | 96 | 205 |
| Feni | 0 | 0 | 0 | 0 | 0 | 0 | 0 | 0 | 0 | 0 | 0 | 0 | 0 | 0 | 0 |
| Daily Avg. | 0 | 0 | 0 | 0 | 0 | 0 | 0 | 0 | 0 | 0 | 0 | 0 | 0 | 0 | 0 |
| Habiganj | 849 | 943 | 1,031 | 703 | 1,029 | 1,256 | 2,502 | 2,056 | 1,633 | 1,309 | 960 | 1,171 | 15,442 | 12,931 | 39,104 |
| Daily Avg. | 27 | 33 | 33 | 23 | 33 | 42 | 81 | 66 | 54 | 42 | 32 | 38 | 42 | 35 | 107 |
| Jalalabad | 9,322 | 8,854 | 7,003 | 4,855 | 5,039 | 4,946 | 4,587 | 5,370 | 5,174 | 5,254 | 5,670 | 6,803 | 72,877 | 57,962 | 55,950 |
| Daily Avg. | 301 | 305 | 226 | 162 | 163 | 165 | 148 | 173 | 172 | 169 | 189 | 219 | 199 | 159 | 153 |
| Kailas Tila | 17,780 | 19,550 | 10,126 | 3,792 | 4,023 | 4,198 | 224 | 4,863 | 6,495 | 8,027 | 9,086 | 11,869 | 100,033 | 68,693 | 43,233 |
| Daily Avg. | 574 | 674 | 327 | 126 | 130 | 140 | 7 | 157 | 217 | 259 | 303 | 383 | 273 | 188 | 118 |
| Kamta | 0 | 0 | 0 | 0 | 0 | 0 | 0 | 0 | 0 | 0 | 0 | 0 | | | |
| Daily Avg. | 0 | 0 | 0 | 0 | 0 | 0 | 0 | 0 | 0 | 0 | 0 | 0 | 0 | 0 | 0 |
| Meghna | 1,105 | 1,074 | 1,212 | 1,240 | 1,277 | 1,294 | 1,428 | 1,457 | 1,512 | 1,638 | 1,624 | 1,586 | 16,447 | 8,048 | 2,014 |
| Daily Avg. | 36 | 37 | 39 | 41 | 41 | 43 | 46 | 47 | 50 | 53 | 54 | 51 | 45 | 22 | 6 |
| Moulavi Baza | 423 | 283 | 160 | 0 | 123 | 761 | 289 | 201 | 1,387 | 2,370 | 728 | 242 | 6,968 | 5,447 | 13,965 |
| Daily Avg. | 14 | 10 | 5 | 0 | 4 | 25 | 9 | 6 | 46 | 76 | 24 | 8 | 19 | 15 | 38 |
| Narshingdi | 915 | 855 | 861 | 704 | 920 | 848 | 880 | 852 | 814 | 851 | 824 | 867 | 10,191 | 10,069 | 10,374 |
| Daily Avg. | 30 | 29 | 28 | 23 | 30 | 28 | 28 | 27 | 27 | 27 | 27 | 28 | 28 | 28 | 28 |
| Rashidpur | 13,644 | 12,554 | 13,120 | 12,425 | 12,796 | 12,361 | 12,726 | 12,542 | 12,027 | 12,750 | 4,332 | 13,155 | 144,432 | 158,452 | 137,406 |
| Daily Avg. | 440 | 433 | 423 | 414 | 413 | 412 | 411 | 405 | 401 | 411 | 144 | 424 | 395 | 434 | 376 |
| Saldanadi | 136 | 129 | 137 | 151 | 205 | 197 | 191 | 177 | 181 | 166 | 161 | 145 | 1,977 | 1,570 | 813 |
| Daily Avg. | 4 | 4 | 4 | 5 | 7 | 7 | 6 | 6 | 6 | 5 | 5 | 5 | 5 | 4 | 2 |

Monthly Water Production by Fields in December 2020



HYDROCARBON UNIT
Energy & Mineral Resources Division

| Field Name | Jan-20 | Feb-20 | Mar-20 | Apr-20 | May-20 | Jun-20 | Jul-20 | Aug-20 | Sep-20 | Oct-20 | Nov-20 | Dec-20 | Total | 2019 | |
|-----------------------------|----------------|----------------|----------------|---------------|---------------|----------------|----------------|----------------|----------------|----------------|----------------|----------------|------------------|------------------|------------------|
| Sangu | 0 | 0 | 0 | 0 | 0 | 0 | 0 | 0 | 0 | 0 | 0 | 0 | 0 | 0 | 0 |
| Daily Avg. | 0 | 0 | 0 | 0 | 0 | 0 | 0 | 0 | 0 | 0 | 0 | 0 | 0 | 0 | 0 |
| Semutang | 146 | 127 | 152 | 134 | 103 | 126 | 5 | 7 | 18 | 13 | 34 | 45 | 911 | 966 | 3,002 |
| Daily Avg. | 5 | 4 | 5 | 4 | 3 | 4 | 0 | 0 | 1 | 0 | 1 | 1 | 2 | 3 | 8 |
| Shahbazpur | 1,491 | 1,361 | 1,855 | 1,299 | 1,444 | 1,571 | 1,665 | 1,672 | 1,666 | 1,218 | 1,095 | 979 | 17,316 | 23,785 | 22,110 |
| Daily Avg. | 48 | 47 | 60 | 43 | 47 | 52 | 54 | 54 | 56 | 39 | 37 | 32 | 47 | 65 | 61 |
| Srikail | 1,606 | 1,511 | 1,526 | 1,136 | 1,278 | 1,419 | 46 | 45 | 45 | 38 | 40 | 1,602 | 10,292 | 19,783 | 18,432 |
| Daily Avg. | 52 | 52 | 49 | 38 | 41 | 47 | 1 | 1 | 2 | 1 | 1 | 52 | 28 | 54 | 50 |
| Sundalpur | 33 | 29 | 32 | 32 | 33 | 34 | 1 | 1 | 1 | 1 | 1 | 34 | 233 | 354 | 219 |
| Daily Avg. | 1 | 1 | 1 | 1 | 1 | 1 | 0 | 0 | 0 | 0 | 0 | 1 | 1 | 1 | 1 |
| Sylhet | 5,906 | 9,948 | 10,396 | 9,389 | 9,656 | 9,524 | 9,884 | 9,887 | 9,580 | 10,151 | 9,948 | 10,327 | 114,597 | 39,488 | 20,362 |
| Daily Avg. | 191 | 343 | 335 | 313 | 311 | 317 | 319 | 319 | 319 | 327 | 332 | 333 | 313 | 108 | 56 |
| Titas | 26,186 | 24,901 | 25,603 | 22,645 | 25,215 | 26,277 | 28,810 | 21,606 | 22,048 | 21,159 | 21,590 | 21,872 | 287,912 | 517,843 | 556,608 |
| Daily Avg. | 845 | 859 | 826 | 755 | 813 | 876 | 929 | 697 | 735 | 683 | 720 | 706 | 787 | 1,419 | 1,525 |
| Begumganj | 67 | 63 | 62 | 42 | 44 | 65 | 2 | 2 | 2 | 2 | 2 | 65 | 418 | 738 | 207 |
| Daily Avg. | 2 | 2 | 2 | 1 | 1 | 2 | 0 | 0 | 0 | 0 | 0 | 2 | 1 | 2 | 1 |
| Rupganj | 0 | 0 | 0 | 0 | 0 | 0 | 0 | 0 | 0 | 0 | 0 | 0 | 0 | 0 | 0 |
| Daily Avg. | 0 | 0 | 0 | 0 | 0 | 0 | 0 | 0 | 0 | 0 | 0 | 0 | 0 | 0 | 0 |
| Total (000'bl | 116,336 | 117,993 | 111,015 | 89,176 | 99,217 | 104,687 | 104,367 | 101,915 | 105,582 | 109,294 | 101,368 | 120,149 | 1,281,101 | 1,349,070 | 1,375,408 |
| Daily Avg. (000'bbl) | 3,753 | 4,069 | 3,581 | 2,973 | 3,201 | 3,490 | 3,367 | 3,288 | 3,519 | 3,526 | 3,379 | 3,876 | 3,500 | 3,696 | 3,768 |

Conditions of Field and Well upto December 2020



HYDROCARBON UNIT
Energy & Mineral Resources Division

| Well | company | well type | Discovery | production start | Drilled depth (ft) | Pressure | Pressure type | Completion Zone |
|----------------------------|---------|-------------|-----------|------------------|--------------------|-----------|---------------|----------------------------|
| Field : Bakharabad | | | | | | | | |
| BKB-1 | BGFCL | Vertical | 1969 | June,1969 | 9309 | | FWHP | J |
| BKB-2 | BGFCL | Directional | 1969 | October,1981 | 7496 | 248-274 | FWHP | G |
| BKB-3 | BGFCL | Directional | 1969 | April,1982 | 9339 | 356-412 | FWHP | G |
| BKB-4 | BGFCL | Directional | 1969 | June,1982 | 9430 | | | D |
| BKB-5 | BGFCL | Directional | 1969 | Sept,1982 | 9675 | 1555-1646 | FWHP | B |
| BKB-6 | BGFCL | Directional | 1969 | March,1989 | 8785 | | | J |
| BKB-7 | BGFCL | Directional | 1969 | July,1989 | 8605 | | FWHP | J |
| BKB-8 | BGFCL | Directional | 1969 | Sept,1989 | 8840 | 490-523 | FWHP | J |
| BKB-9 | BGFCL | Vertical | 1969 | August,2013 | 8318 | 1005-1097 | FWHP | G |
| BKB-10 | BGFCL | Directional | 1969 | June,2016 | 9291 | 1010-1102 | FWHP | K |
| Field : Bangura | | | | | | | | |
| Bangura-1 | Tullow | | 2004 | | | 887-940 | FWHP | D |
| Bangura-2 | Tullow | | 2004 | | | 587-685 | FWHP | D/E |
| Bangura-3 | Tullow | | 2004 | | | 719-789 | FWHP | D |
| Bangura-6 | Tullow | | 2004 | | | 708-780 | FWHP | D |
| Bangura-5 | Tullow | | 2004 | | | 579-621 | FWHP | D |
| Field : Beani Bazar | | | | | | | | |
| BB-1 | SGFL | | 1981 | July,1999 | 13480 | 580-620 | SIWHP | Upper |
| BB-2 | SGFL | | 1981 | July,1999 | 12048 | 3210-3220 | FWHP | Upper |
| Field : Bibiyana | | | | | | | | |
| BY-1 | Chevron | | 1998 | | | 1547-2007 | FWHP | BB60, BB66 |
| BY-2 | Chevron | | 1998 | | | 1313-1390 | FWHP | BB60, BH20A, BH20E |
| BY-3 | Chevron | | 1998 | | | 1363-1403 | FWHP | BB70 |
| BY-4 | Chevron | | 1998 | | | 1330-1390 | FWHP | BH10 |
| BY-5 | Chevron | | 1998 | | | 1254-1299 | FWHP | BH20A, BH20B, BH20C, BH20D |
| BY-6 | Chevron | | 1998 | | | 1250-1486 | FWHP | BB70 |
| BY-7 | Chevron | | 1998 | | | 1454-1566 | FWHP | BH10 |
| BY-8 | Chevron | | 1998 | | | 1270-1297 | FWHP | BH20A, BH20B |
| BY-9 | Chevron | | 1998 | | | 1243-1273 | FWHP | BH10 |
| BY-10 | Chevron | | 1998 | | | 1465-1533 | FWHP | BB60 |
| BY-11 | Chevron | | 1998 | | | 1260-1284 | FWHP | BH20A, BH20B |
| BY-12 | Chevron | | 1998 | | | 1259-1332 | FWHP | BB70 |
| BY-13 | Chevron | | 1998 | | | 1300-1356 | FWHP | BH20A, BH20B |
| BY-14 | Chevron | | 1998 | | | 1342-1632 | FWHP | BH20A, BH20B |
| BY-15 | Chevron | | 1998 | | | 2189-2240 | FWHP | BB60 |
| BY-16 | Chevron | | 1998 | | | 1381-1644 | FWHP | BH10, BH20D |

Conditions of Field and Well upto December 2020



| Well | company | well type | Discovery | production start | Drilled depth (ft) | Pressure | Pressure type | Completion Zone |
|---------------------------|----------------|--------------------|-------------|-----------------------|--------------------|------------------|---------------|----------------------------------|
| BY-17 | <i>Chevron</i> | | <i>1998</i> | | | <i>2104-2229</i> | <i>FWHP</i> | <i>BB60</i> |
| BY-18 | <i>Chevron</i> | | <i>1998</i> | | | <i>1904-2218</i> | <i>FWHP</i> | <i>BB60</i> |
| BY-19 | <i>Chevron</i> | | <i>1998</i> | | | <i>1354-1477</i> | <i>FWHP</i> | <i>BH10, BH20A</i> |
| BY-20 | <i>Chevron</i> | | <i>1998</i> | | | <i>1248-1262</i> | <i>FWHP</i> | <i>BH20D, BH20A, BH10</i> |
| BY-21 | <i>Chevron</i> | | <i>1998</i> | | | <i>1333-1348</i> | <i>FWHP</i> | <i>BH20A, BH20B, BH10</i> |
| BY-22 | <i>Chevron</i> | | <i>1998</i> | | | <i>1552-1586</i> | <i>FWHP</i> | <i>BB60</i> |
| BY-23 | <i>Chevron</i> | | <i>1998</i> | | | <i>1739-2021</i> | <i>FWHP</i> | <i>BH10, BH20A, BH20B, BH20C</i> |
| BY-24 | <i>Chevron</i> | | <i>1998</i> | | | <i>1337-2091</i> | <i>FWHP</i> | <i>BB60</i> |
| BY-25 | <i>Chevron</i> | | <i>1998</i> | | | <i>1728-1857</i> | <i>FWHP</i> | <i>BB60, BB66</i> |
| BY-26 | <i>Chevron</i> | | <i>1998</i> | | | <i>1877-2094</i> | <i>FWHP</i> | <i>BB60, BB64</i> |
| Field : Chattak | | | | | | | | |
| Ch-1 | SGFL | | 1959 | | | | | |
| Field : Fenchuganj | | | | | | | | |
| Fenchuganj-2 | <i>BAPEX</i> | | <i>1988</i> | <i>May, 2004</i> | | | | |
| Fenchuganj-3 | <i>BAPEX</i> | | <i>1988</i> | <i>February, 2005</i> | | <i>2004-2010</i> | | <i>upper</i> |
| Fenchuganj-4 | <i>BAPEX</i> | | <i>1988</i> | | | <i>2037-2065</i> | | |
| Field : Feni | | | | | | | | |
| Feni-1 | <i>BAPEX</i> | | <i>1981</i> | | | | | |
| Feni-2 | <i>BAPEX</i> | | <i>1981</i> | | | | | |
| Feni-3 | <i>BAPEX</i> | | <i>1981</i> | | | | | |
| Feni-4 | <i>BAPEX</i> | | <i>1981</i> | | | | | |
| Feni-5 | <i>BAPEX</i> | | <i>1981</i> | | | | | |
| Field : Habiganj | | | | | | | | |
| Hbj-1 | <i>BGFCL</i> | <i>Vertical</i> | <i>1963</i> | <i>Feb,1969</i> | <i>11500</i> | | <i>FWHP</i> | <i>upper</i> |
| Hbj-2 | <i>BGFCL</i> | <i>Vertical</i> | <i>1963</i> | <i>Feb,1969</i> | <i>5100</i> | | <i>FWHP</i> | <i>upper</i> |
| Hbj-3 | <i>BGFCL</i> | <i>Vertical</i> | <i>1963</i> | <i>July,1985</i> | <i>5282</i> | <i>1478-1486</i> | <i>FWHP</i> | <i>upper</i> |
| Hbj-4 | <i>BGFCL</i> | <i>Vertical</i> | <i>1963</i> | <i>May,1985</i> | <i>5249</i> | <i>1460-1467</i> | <i>FWHP</i> | <i>upper</i> |
| Hbj-5 | <i>BGFCL</i> | <i>Directional</i> | <i>1963</i> | <i>Feb,1992</i> | <i>11552</i> | <i>1440-1446</i> | <i>FWHP</i> | <i>upper</i> |
| Hbj-6 | <i>BGFCL</i> | <i>Vertical</i> | <i>1963</i> | <i>Feb,1992</i> | <i>5515</i> | <i>1375-1379</i> | <i>FWHP</i> | <i>upper</i> |
| Hbj-7 | <i>BGFCL</i> | <i>Vertical</i> | <i>1963</i> | <i>April,2000</i> | <i>10236</i> | <i>1331-1139</i> | <i>FWHP</i> | <i>upper</i> |
| Hbj-8 | <i>BGFCL</i> | <i>Vertical</i> | <i>1963</i> | <i>May, 2000</i> | <i>5280</i> | | | <i>upper</i> |
| Hbj-9 | <i>BGFCL</i> | <i>Vertical</i> | <i>1963</i> | <i>July,1998</i> | <i>5249</i> | | | <i>upper</i> |
| Hbj-10 | <i>BGFCL</i> | <i>Vertical</i> | <i>1963</i> | <i>Apr, 2000</i> | <i>5133</i> | <i>1322-1331</i> | <i>FWHP</i> | <i>upper</i> |
| Hbj-11 | <i>BGFCL</i> | <i>Vertical</i> | <i>1963</i> | <i>February,2008</i> | <i>10499</i> | <i>1417-1423</i> | <i>FWHP</i> | <i>upper</i> |
| Field : Jalalabad | | | | | | | | |
| JB-1 | <i>Chevron</i> | | <i>1989</i> | | | <i>1333-1436</i> | <i>FWHP</i> | <i>BB60, BB50</i> |

Conditions of Field and Well upto December 2020



| Well | company | well type | Discovery | production start | Drilled depth (ft) | Pressure | Pressure type | Completion Zone |
|------------------------------|----------------|-----------------|-------------|----------------------|--------------------|------------------|-------------------|-------------------------|
| JB-2 | <i>Chevron</i> | | <i>1989</i> | | | <i>1279-1294</i> | <i>FWHP</i> | <i>BB50, BB60</i> |
| JB-3 | <i>Chevron</i> | | <i>1989</i> | | | <i>1332-1375</i> | <i>FWHP</i> | <i>BB50, BB60</i> |
| JB-4 | <i>Chevron</i> | | <i>1989</i> | | | <i>1365-1425</i> | <i>FWHP</i> | <i>BB60</i> |
| JB-6 | <i>Chevron</i> | | <i>1989</i> | | | <i>1354-1362</i> | <i>FWHP</i> | <i>BB60, BB50</i> |
| JB-7 | <i>Chevron</i> | | <i>1989</i> | | | <i>1666-1679</i> | <i>FWHP</i> | <i>BB20</i> |
| JB-8 | <i>Chevron</i> | | <i>1989</i> | | | <i>1362-1370</i> | <i>FWHP</i> | <i>BB50, BB60</i> |
| Field : Kailas Tila | | | | | | | | |
| KTL-1 | <i>SGFL</i> | | <i>1962</i> | <i>June, 1983</i> | <i>12417</i> | <i>0</i> | <i>SIWHP</i> | |
| KTL-2 | <i>SGFL</i> | | <i>1962</i> | <i>Feb, 1995</i> | | <i>2225-2230</i> | <i>FWHP</i> | |
| KTL-3 | <i>SGFL</i> | | <i>1962</i> | <i>March, 1995</i> | | <i>2470-2495</i> | <i>FWHP</i> | |
| KTL-4 | <i>SGFL</i> | | <i>1962</i> | <i>March, 1997</i> | | <i>2360-2410</i> | <i>FWHP</i> | |
| KTL-5 | <i>SGFL</i> | | <i>1962</i> | <i>Sep, 2006</i> | | <i>0</i> | <i>SIWHP</i> | |
| KTL-6 | <i>SGFL</i> | | <i>1962</i> | <i>Aug, 2007</i> | | <i>2490-2495</i> | <i>FWHP</i> | |
| KTL-7 | <i>SGFL</i> | | <i>1962</i> | | | <i>0</i> | <i>SIWHP</i> | |
| Field : Kamta | | | | | | | | |
| Kamta-1 | <i>BGFCL</i> | <i>Vertical</i> | <i>1981</i> | <i>july,1982</i> | <i>11857</i> | | | <i>N/A</i> |
| Field : Meghna | | | | | | | | |
| M-1 | <i>BGFCL</i> | <i>Vertical</i> | <i>2004</i> | <i>july,1990</i> | <i>10069</i> | <i>1400-1450</i> | <i>FWHP</i> | <i>A,E,F & G</i> |
| Field : Moulavi Bazar | | | | | | | | |
| MV Bazar-2 | <i>Chevron</i> | | <i>1997</i> | | | <i>800-820</i> | <i>FWHP</i> | <i>BB70</i> |
| MV Bazar-3 | <i>Chevron</i> | | <i>1997</i> | | | <i>800-820</i> | <i>FWHP</i> | <i>BB70</i> |
| MV Bazar-4 | <i>Chevron</i> | | <i>1997</i> | | | <i>946-952</i> | <i>FWHP</i> | <i>BB20</i> |
| MV Bazar-5 | <i>Chevron</i> | | <i>1997</i> | | | <i>0</i> | <i>SIWHP</i> | <i>BB60</i> |
| MV Bazar-6 | <i>Chevron</i> | | <i>1997</i> | | | <i>822-890</i> | <i>FWHP</i> | <i>BB20</i> |
| MV Bazar-7 | <i>Chevron</i> | | <i>1997</i> | | | <i>844-901</i> | <i>FWHP/SIWHP</i> | <i>BB20</i> |
| MV Bazar-9 | <i>Chevron</i> | | <i>1997</i> | | | <i>0</i> | <i>SIWHP</i> | <i>BB46, BB48, BB60</i> |
| Field : Narshingdi | | | | | | | | |
| N-1 | <i>BGFCL</i> | <i>vertical</i> | <i>1990</i> | <i>october,1990</i> | <i>11320</i> | <i>1143-1197</i> | <i>FWHP</i> | <i>BL</i> |
| N-2 | <i>BGFCL</i> | <i>vertical</i> | <i>1990</i> | <i>february,2007</i> | <i>10778</i> | <i>1015-1097</i> | <i>FWHP</i> | <i>BL</i> |
| Field : Rashidpur | | | | | | | | |
| RP-1 | <i>SGFL</i> | | <i>1960</i> | | | <i>1290-1291</i> | <i>FWHP</i> | <i>Upper</i> |
| RP-2 | <i>SGFL</i> | | <i>1960</i> | | | <i>73</i> | <i>SIWHP</i> | <i>Lower</i> |
| RP-3 | <i>SGFL</i> | | <i>1960</i> | | | <i>1548-1568</i> | <i>FWHP</i> | <i>Lower</i> |
| RP-4 | <i>SGFL</i> | | <i>1960</i> | | | <i>1450-1655</i> | <i>FWHP</i> | <i>Lower</i> |
| RP-5 | <i>SGFL</i> | | <i>1960</i> | | | <i>2291</i> | <i>SIWHP</i> | <i>Lower</i> |
| RP-6 | <i>SGFL</i> | | <i>1960</i> | | | <i>870</i> | <i>SIWHP</i> | <i>A</i> |

Conditions of Field and Well upto December 2020



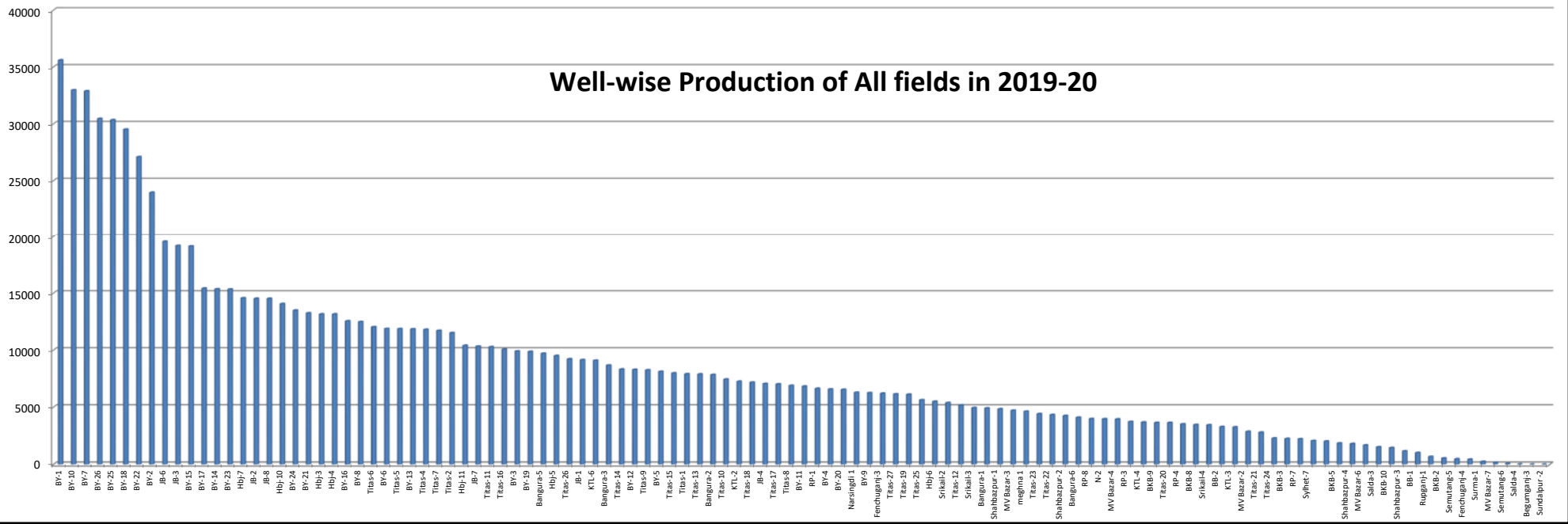
| Well | company | well type | Discovery | production start | Drilled depth (ft) | Pressure | Pressure type | Completion Zone |
|---------------------------|---------|-------------|-----------|------------------|--------------------|------------------|---------------|-----------------|
| RP-7 | SGFL | | 1960 | | | 1308-1338 | FWHP | Lower |
| RP-8 | SGFL | | 1960 | | | 1600-1625 | FWHP | Upper |
| Field : Salda Nadi | | | | | | | | |
| Salda-1 | BAPEX | | 1995 | | | | | |
| Salda-2 | BAPEX | | 1995 | | | | | |
| Salda-3 | BAPEX | Directional | 1995 | February, 2012 | | 639-640, 698-700 | | Upper/Lower |
| Salda-4 | BAPEX | | 1995 | | | | | |
| Field : Sangu | | | | | | | | |
| Sangu-1 | BGFCL | | 1996 | | | | | |
| Sangu-3z | BGFCL | | 1996 | | | | | |
| Sangu-4 | BGFCL | | 1996 | | | | | |
| Sangu-5 | BGFCL | | 1996 | | | | | |
| Sangu-7 | BGFCL | | 1996 | | | | | |
| Sangu-8 | BGFCL | | 1996 | | | | | |
| Sangu-9 | BGFCL | | 1996 | | | | | |
| Sangu-10 | BGFCL | | 1996 | | | | | |
| Sangu-11 | BGFCL | | 1996 | | | | | |
| Field : Semutang | | | | | | | | |
| Semutang-5 | BAPEX | | 1967 | | | 280-508 | | Lower Zone |
| Semutang-6 | BAPEX | | 1967 | | | 750-1302 | | |
| Field : Shahbazpur | | | | | | | | |
| Shahbazpur-1 | BAPEX | | 1995 | May, 2009 | | 2310-3543 | | Lower Zone |
| Shahbazpur-2 | BAPEX | | 1995 | | | 3541-4133 | | Lower Zone |
| Shahbazpur-3 | BAPEX | | 1995 | | | 4300 | | Upper Zone |
| Shahbazpur-4 | BAPEX | | 1995 | | | 4250 | | Upper Zone |
| Field : Srikail | | | | | | | | |
| Srikail-2 | BAPEX | | 2012 | | | 990-1016 | | Upper & Lower D |
| Srikail-3 | BAPEX | | 2012 | | | 981-1043 | | Upper & Lower D |
| Srikail-4 | BAPEX | | 2012 | | | 1018-1068 | | Upper & Lower D |
| Field : Sundalpur | | | | | | | | |
| Sundalpur -1 | BAPEX | | 2011 | | | | | |
| Sundalpur -2 | BAPEX | | 2011 | | | | | |
| Field : Sylhet | | | | | | | | |
| Sylhet-3 | SGFL | | 1955 | Aug, 1958 | | | | |
| Sylhet-6 | SGFL | | 1955 | Aug, 1964 | | 800-850 | SIWHP | |
| Sylhet-7 | SGFL | | 1955 | Apr, 2005 | | 1750-1820 | FWHP | Lower Bokabil |

Conditions of Field and Well upto December 2020

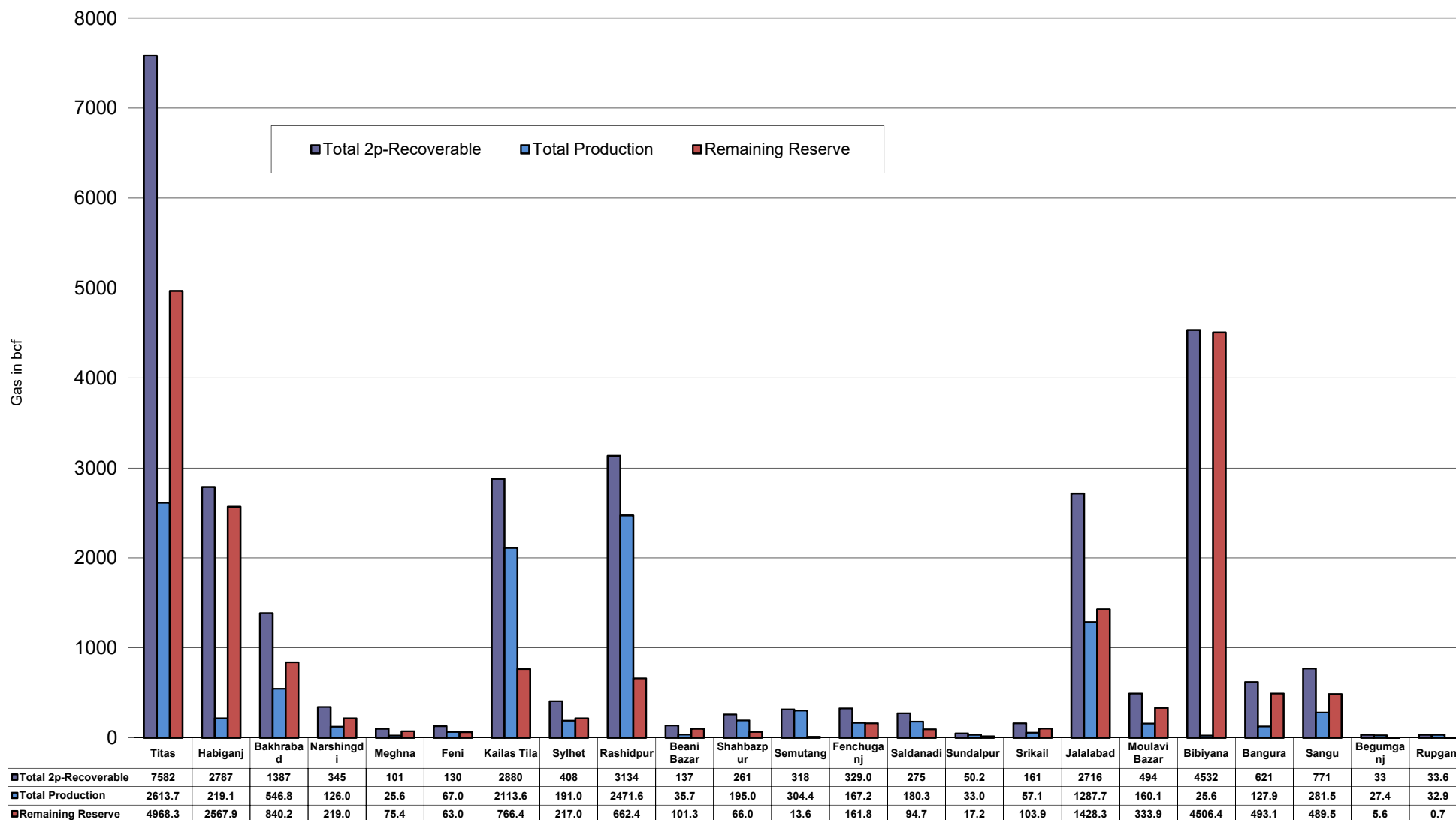


| Well | company | well type | Discovery | production start | Drilled depth (ft) | Pressure | Pressure type | Completion Zone |
|--------------------------|---------|-------------|-----------|------------------|--------------------|-----------|---------------|-----------------|
| Surma-1 | SGFL | | 1955 | June, 2010 | | 230 | SIWHP | C & D |
| Field : Titas | | | | | | | | |
| Titas-1 | BGFCL | vertical | 1962 | Mar,1969 | 12325 | 900-925 | FWHP | A |
| Titas-2 | BGFCL | vertical | 1962 | Fen,1969 | 10574 | 960-1020 | FWHP | A |
| Titas-3 | BGFCL | vertical | 1962 | sept,1969 | 9315 | 0 | FWHP | A |
| Titas-4 | BGFCL | vertical | 1962 | oct,1969 | 9350 | 1020-1070 | FWHP | A |
| Titas-5 | BGFCL | Directional | 1962 | jan,1981 | 10805 | 990-1035 | FWHP | A |
| Titas-6 | BGFCL | vertical | 1962 | Feb,1984 | 10072 | 1195-1225 | FWHP | A |
| Titas-7 | BGFCL | Directional | 1962 | July,1985 | 11006 | 1090-1160 | FWHP | A |
| Titas-8 | BGFCL | Directional | 1962 | sept,1985 | 11760 | 1000-1030 | FWHP | B & C |
| Titas-9 | BGFCL | Directional | 1962 | jan,1988 | 11893 | 1040-1085 | FWHP | B & C |
| Titas-10 | BGFCL | Directional | 1962 | may,1988 | 12139 | 1140-1180 | FWHP | A |
| Titas-11 | BGFCL | vertical | 1962 | Jun,1991 | 10462 | 1275-1310 | FWHP | A |
| Titas-12 | BGFCL | Directional | 1962 | July,2002 | 9873 | 1465-1500 | FWHP | A |
| Titas-13 | BGFCL | Directional | 1962 | June,2000 | 11487 | 1085-1115 | FWHP | A |
| Titas-14 | BGFCL | Directional | 1962 | June,2000 | 11004 | 1200-1250 | FWHP | A |
| Titas-15 | BGFCL | vertical | 1962 | may,2006 | 10446 | 0 | FWHP | A |
| Titas-16 | BGFCL | Directional | 1962 | dec,2005 | 11673 | 1205-1225 | FWHP | A |
| Titas-17 | BGFCL | vertical | 1962 | feb,2013 | 9424 | 1145-1175 | FWHP | A |
| Titas-18 | BGFCL | Directional | 1962 | august,2013 | 10932 | 1165-1190 | FWHP | A |
| Titas-19 | BGFCL | Directional | 1962 | may,2014 | 12730 | 1365-1415 | FWHP | A |
| Titas-20 | BGFCL | Directional | 1962 | oct,2013 | 11585 | 1370-1440 | FWHP | A |
| Titas-21 | BGFCL | Directional | 1962 | dec,2013 | 11631 | 1260-1285 | FWHP | A |
| Titas-22 | BGFCL | Directional | 1962 | march,2014 | 11926 | 990-1025 | FWHP | A |
| Titas-27 | BGFCL | Directional | 1962 | april,2014 | 10292 | 1245-1265 | FWHP | A |
| Titas-23 | BGFCL | Directional | 1962 | feb,2017 | 11988 | 2265-2340 | FWHP | C |
| Titas-24 | BGFCL | Directional | 1962 | oct,2016 | 12686 | 1120-1245 | FWHP | C |
| Titas-25 | BGFCL | vertical | 1962 | march,2016 | 11680 | 1300-1340 | FWHP | A |
| Titas-26 | BGFCL | Directional | 1962 | july,2016 | 12618 | 1840-1875 | FWHP | C |
| Field : Begumganj | | | | | | | | |
| Begumganj-3 | BAPEX | | 1977 | | | | | |
| Field : Rupganj | | | | | | | | |
| Rupganj-1 | BAPEX | | 2014 | | | 38-88 | | |

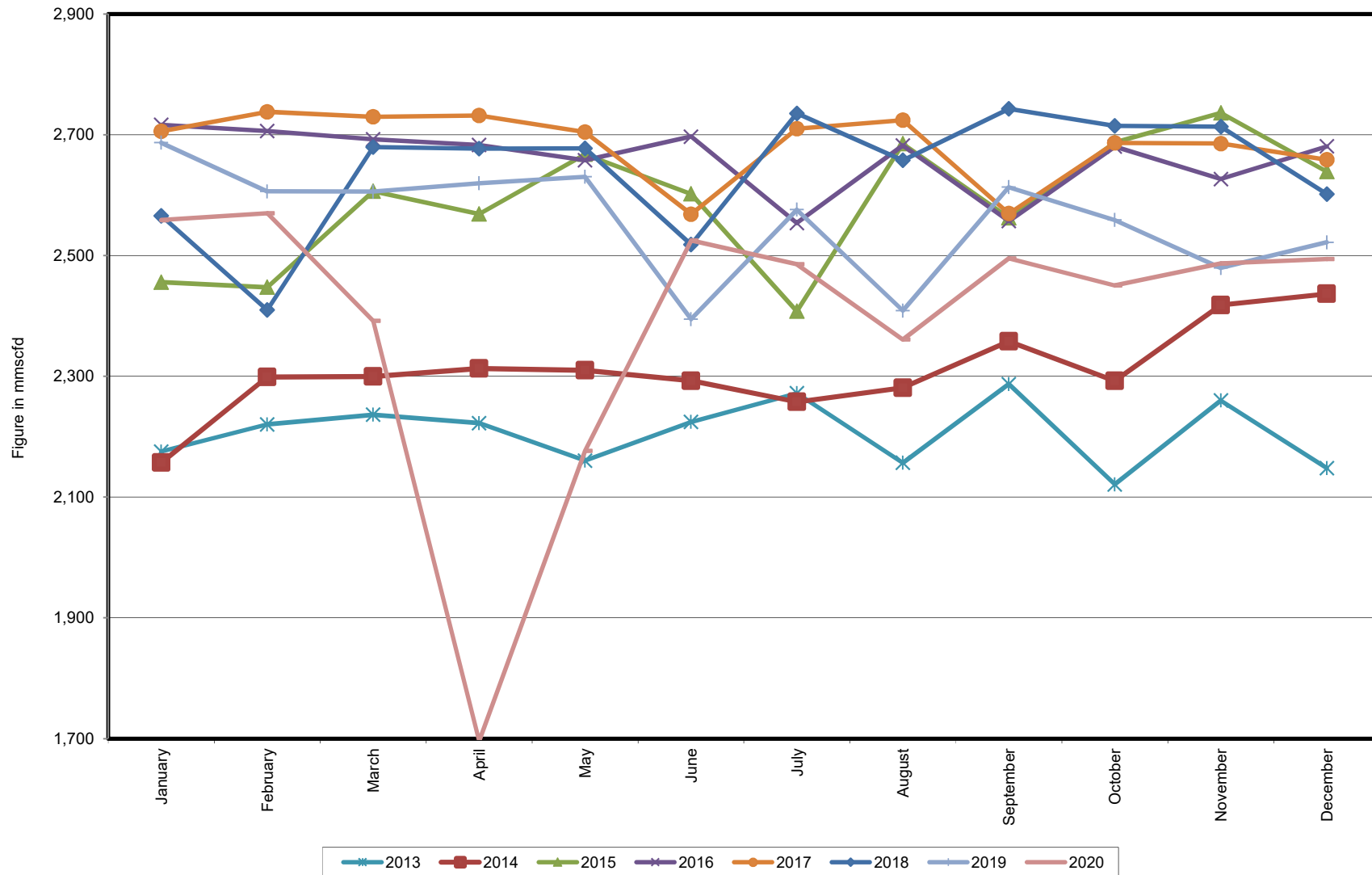
Well-wise Production of All fields in 2019-20



Reserve, Production and Remaining Reserve as of December 2020



Daily Avg. Production From January 2013 to December 2020



Field Wise Daily Avg. Production December 2020

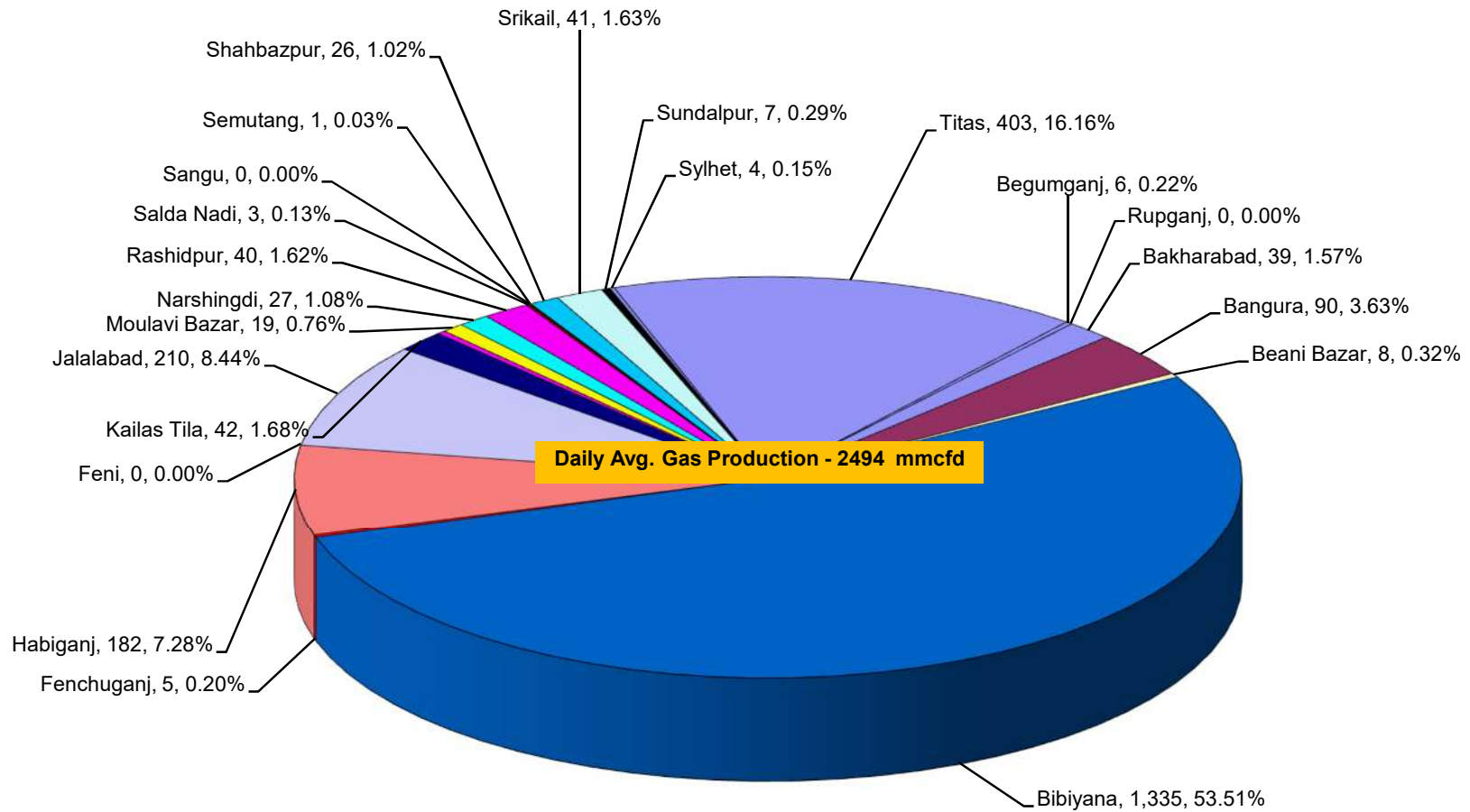
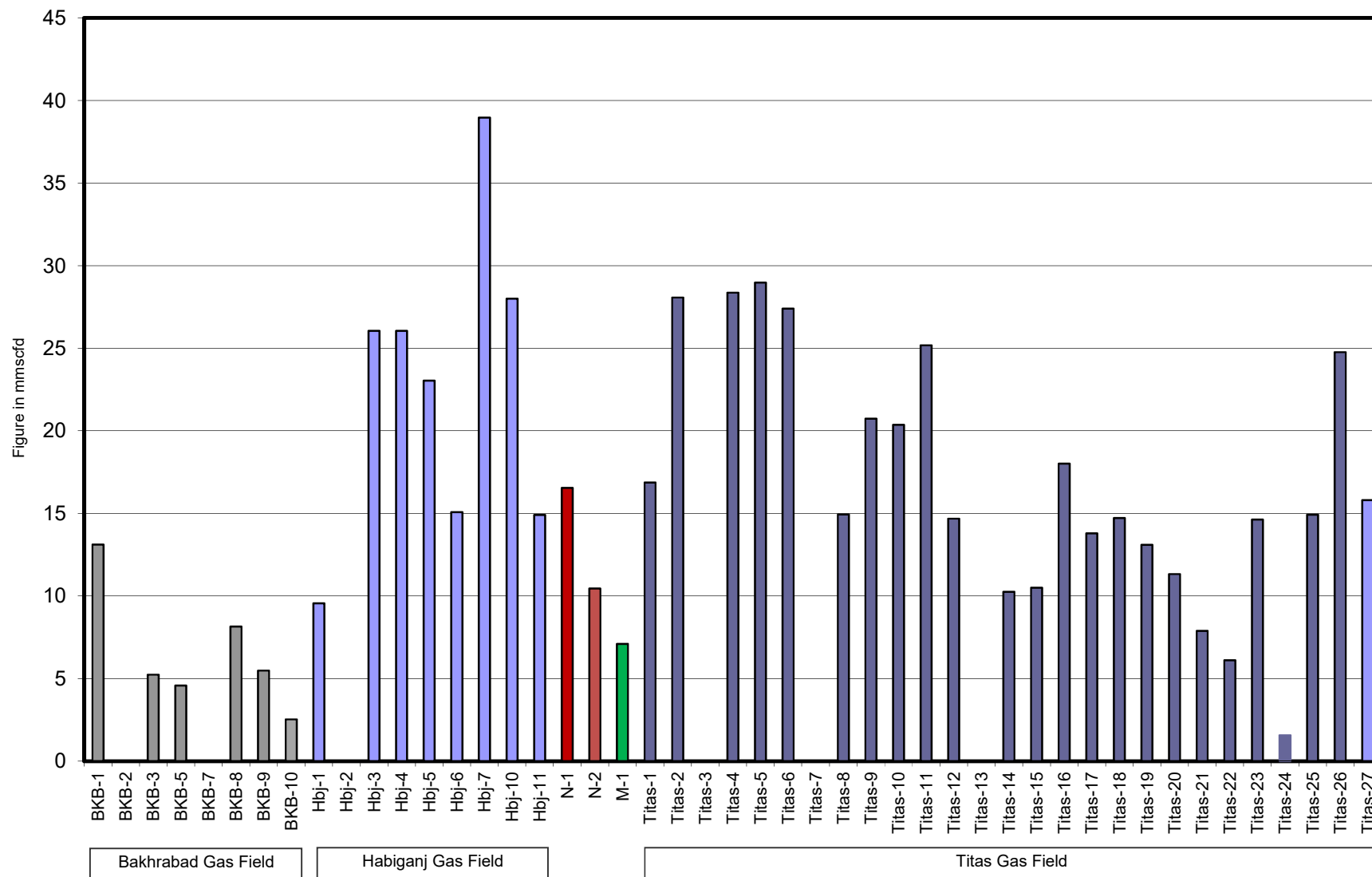


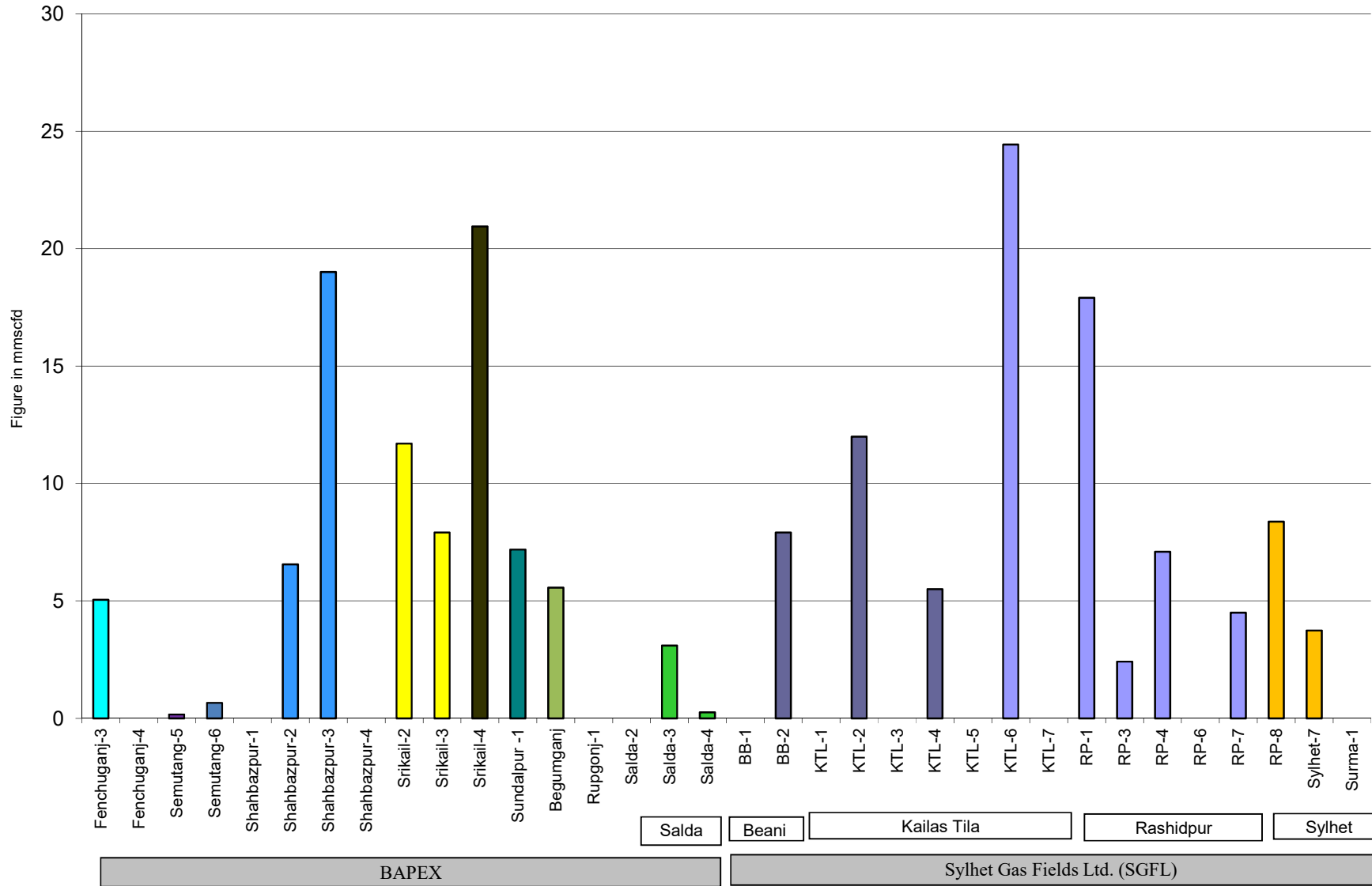
Figure in mmcf and % of total production

Wellwise Daily Avg. Production- BGFCL December 2020

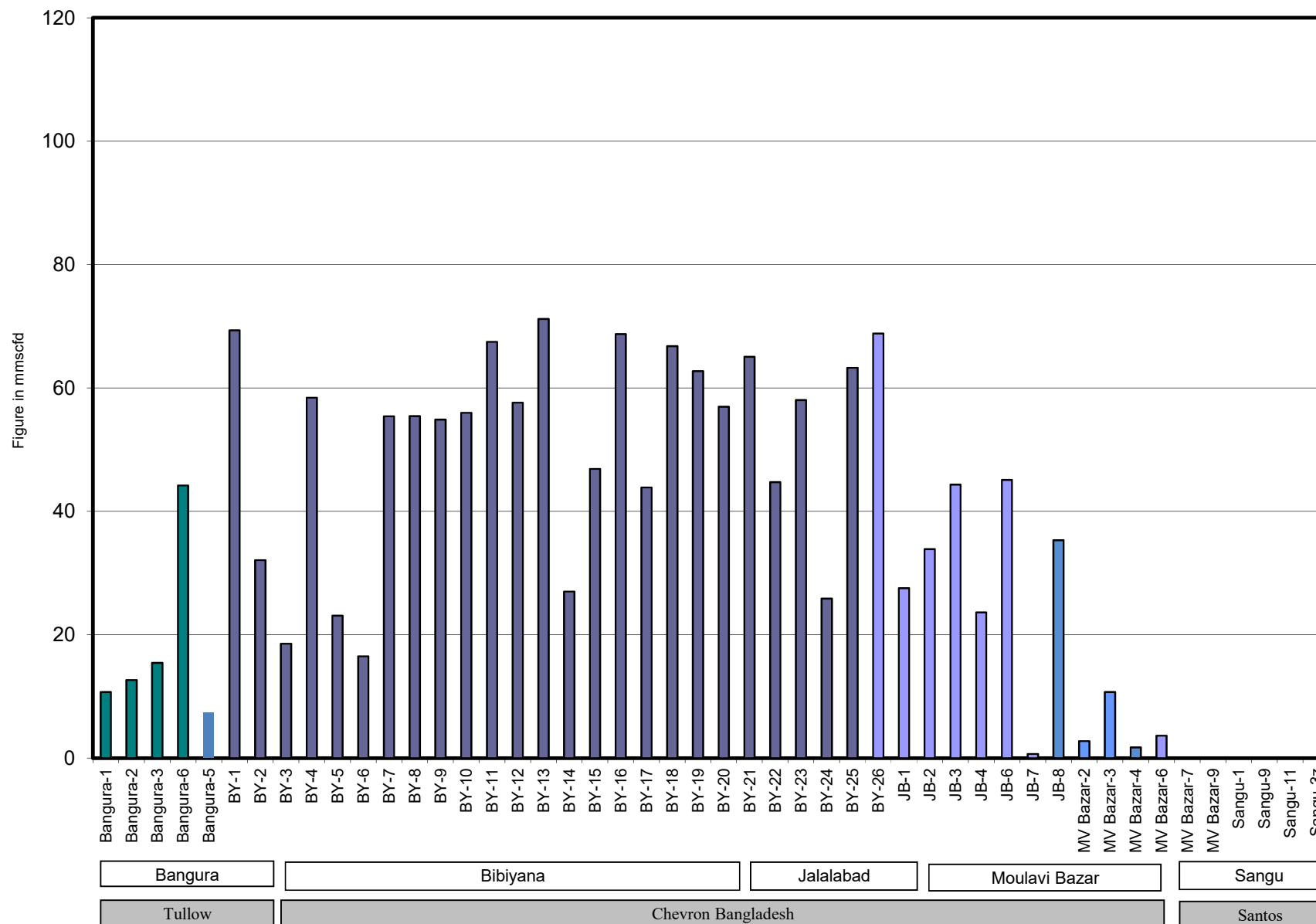


Bangladesh Gas Fields Co. Ltd. (BGFCL)

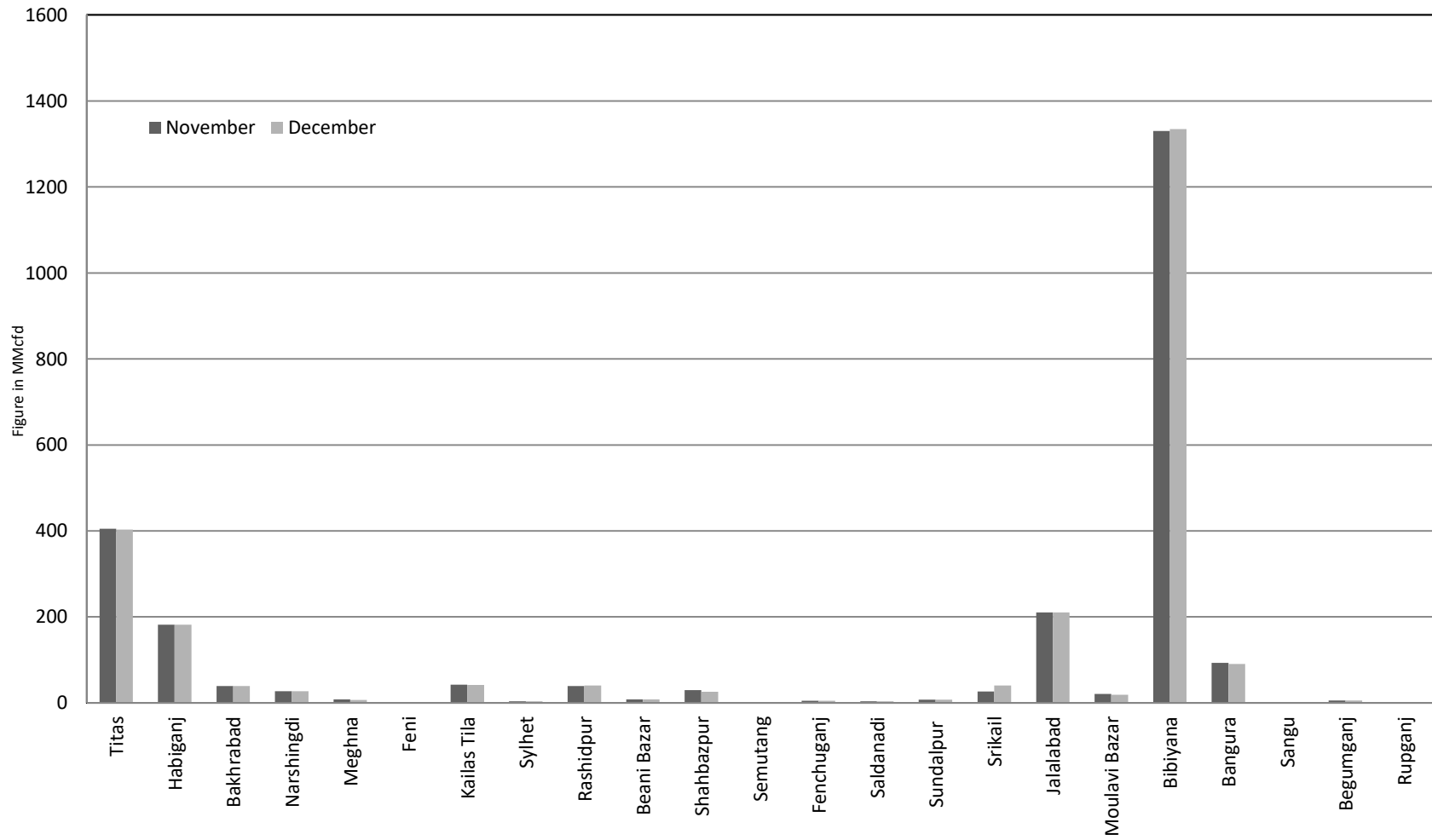
Wellwise Daily Avg. Production- Bapex and SGFL December 2020



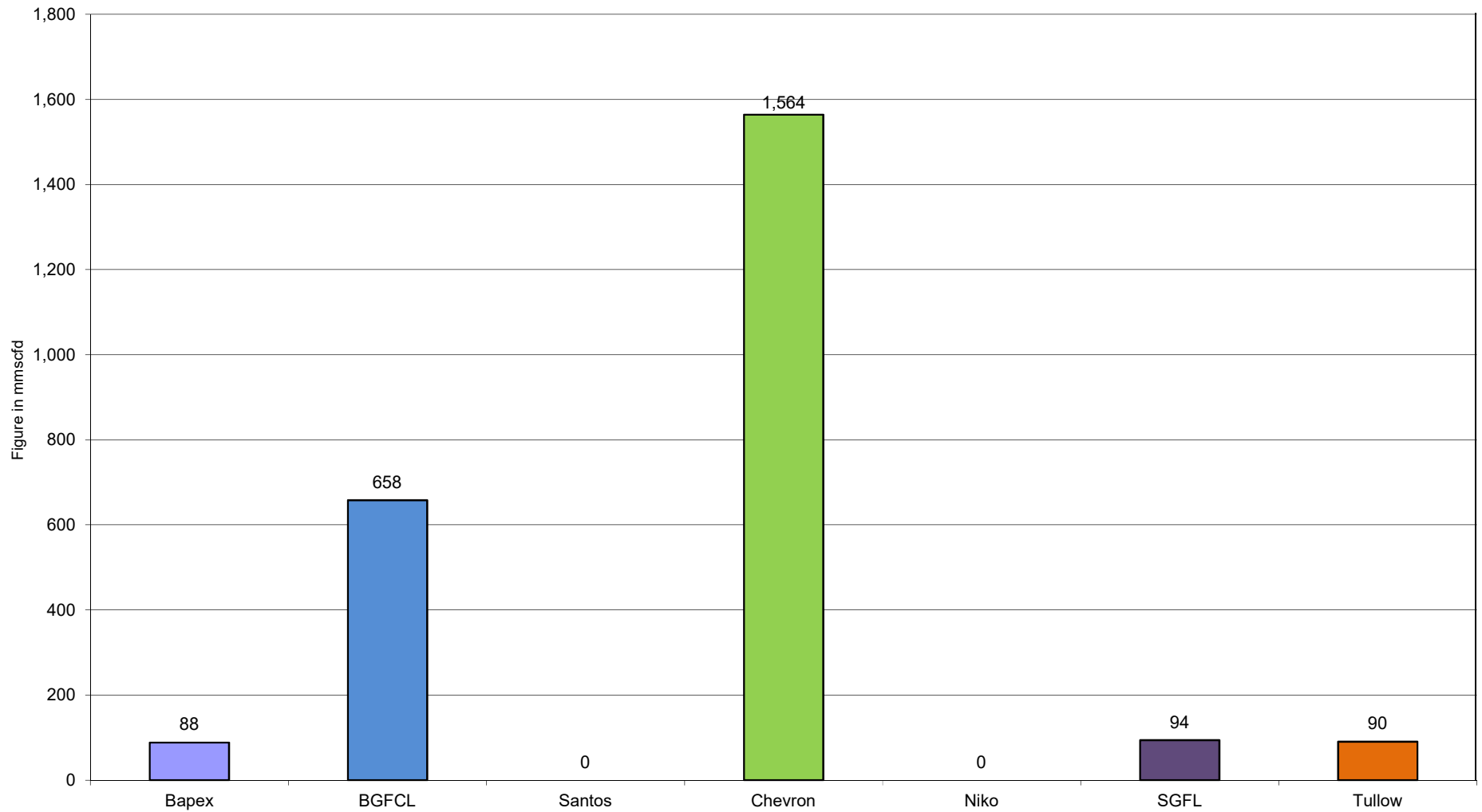
Wellwise Daily Avg. Production- IOC and JVA December 2020



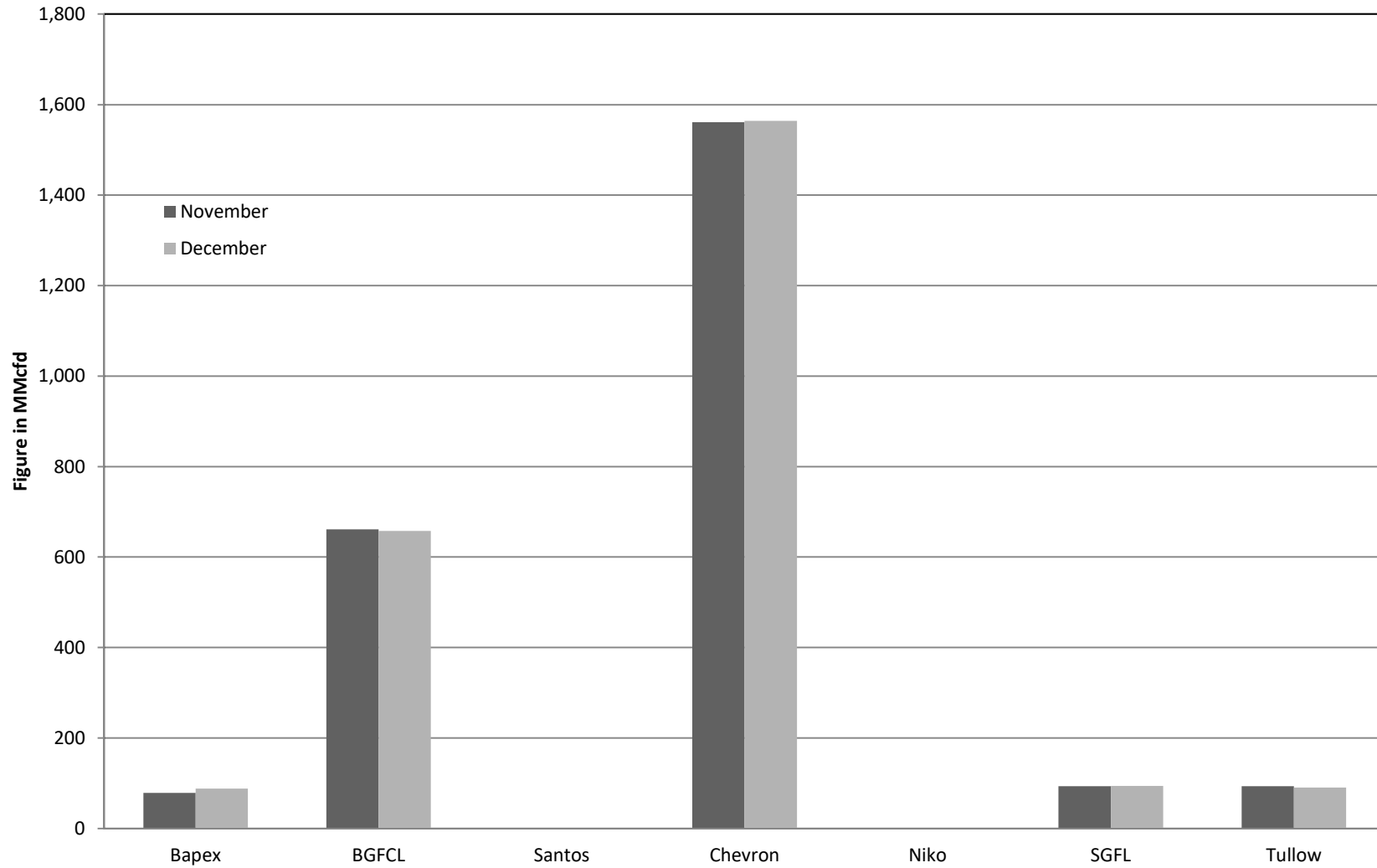
Comparison of fieldwise daily avg. Gas production between November 20 & December 20



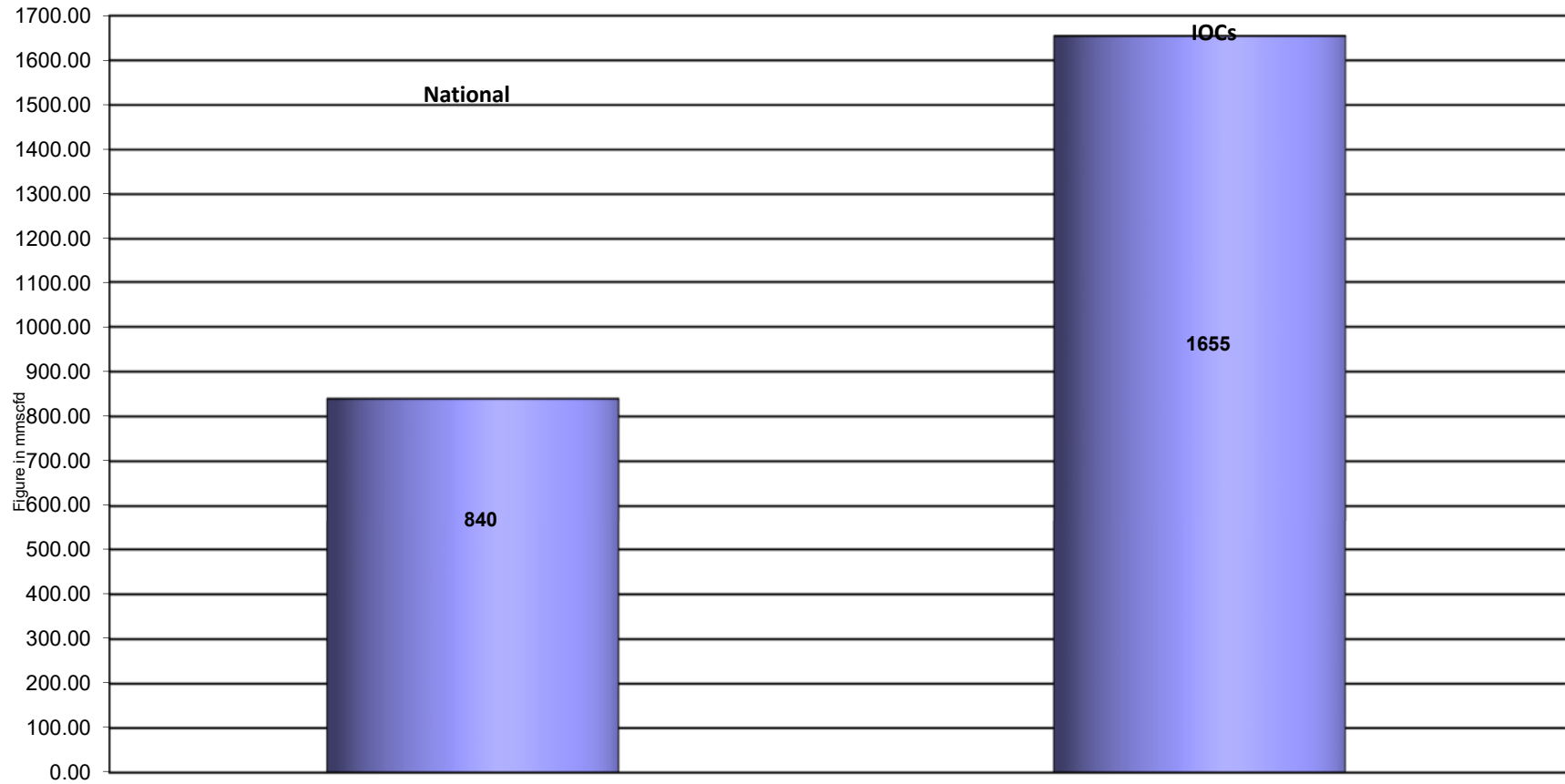
Daily Avg. Production by Operators December 2020



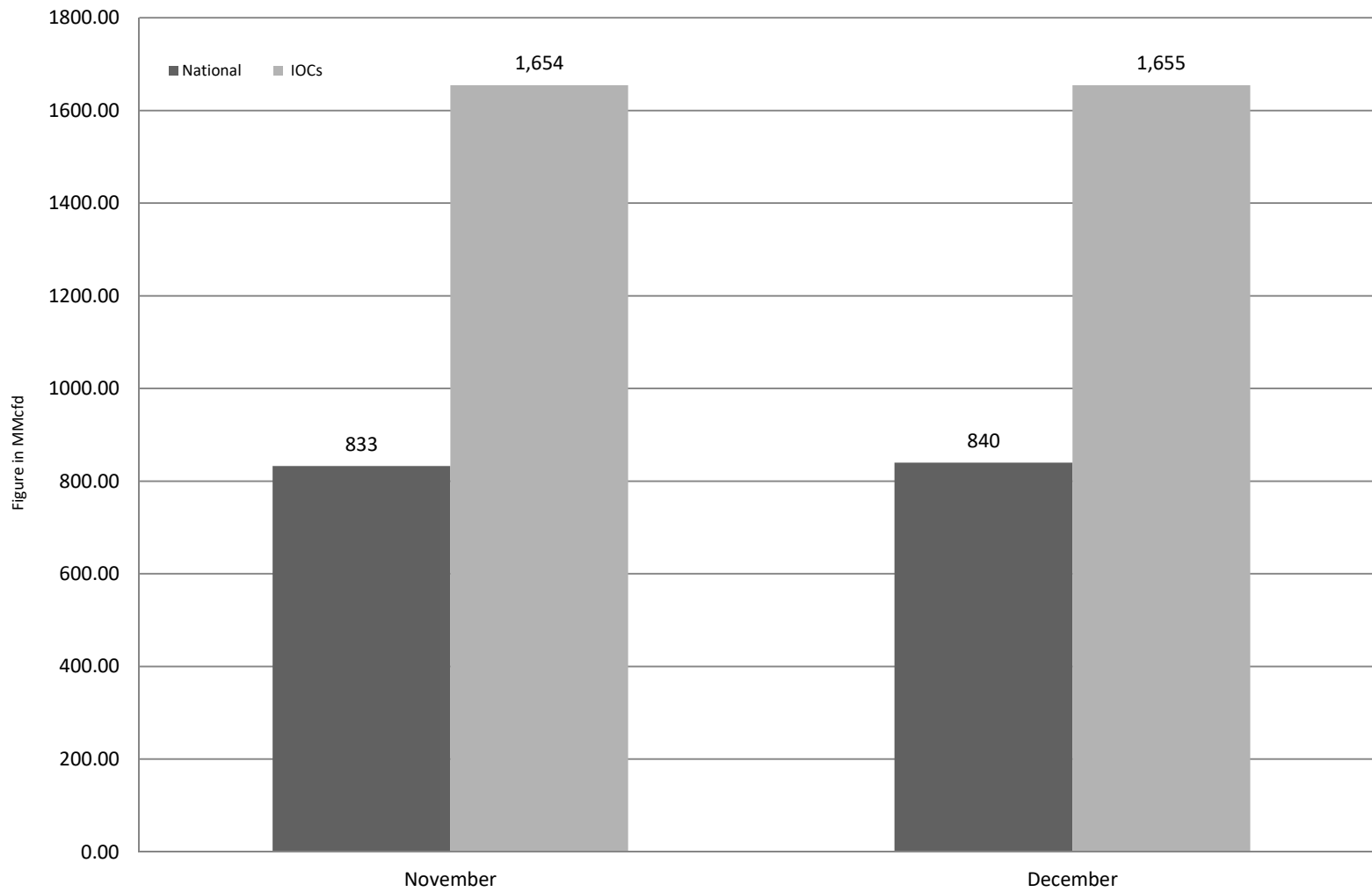
Comparison of operatorwise daily avg. Gas production between November 2020 & December 2020



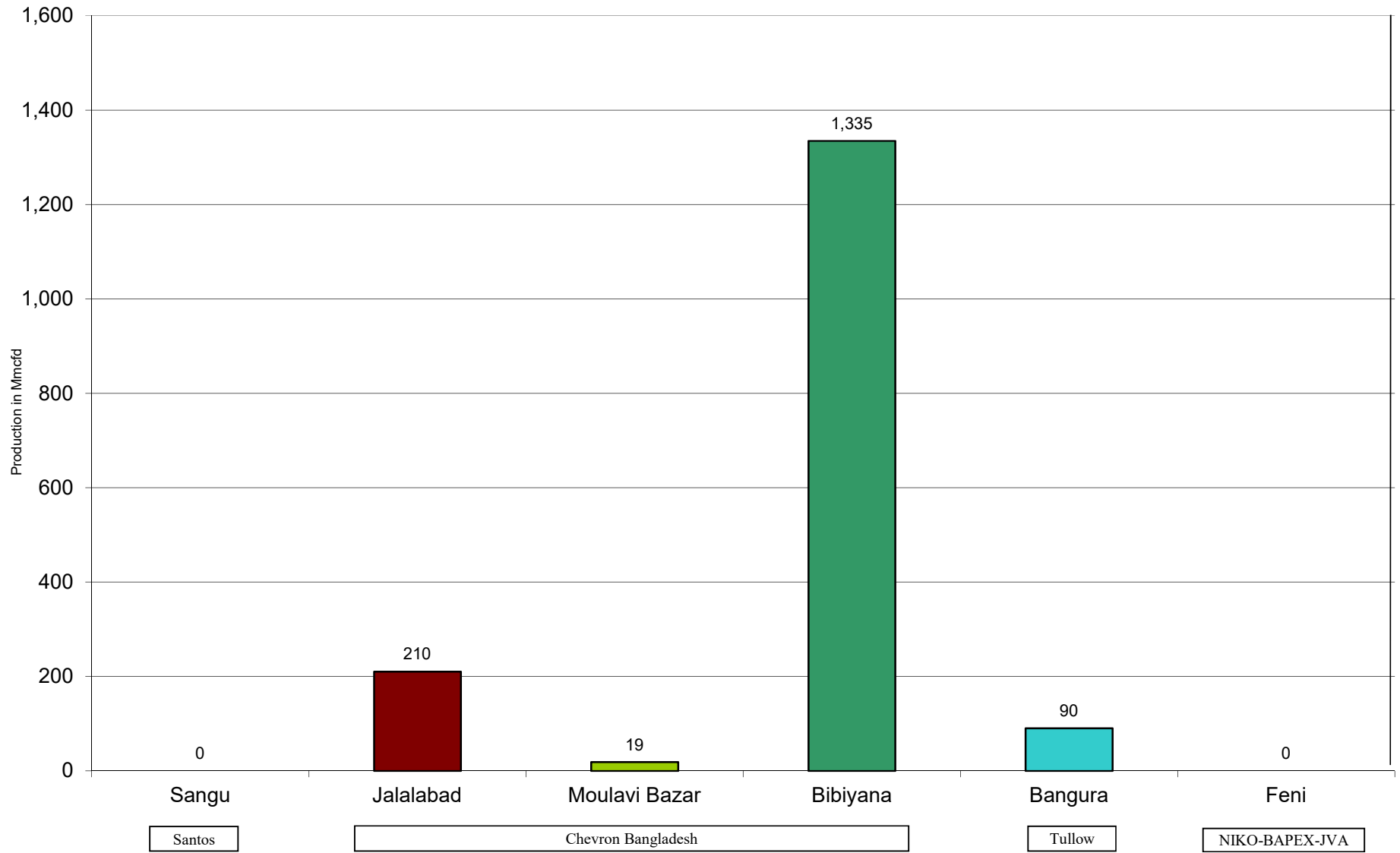
Daily Avg. Production - National Vs. IOCs December 2020



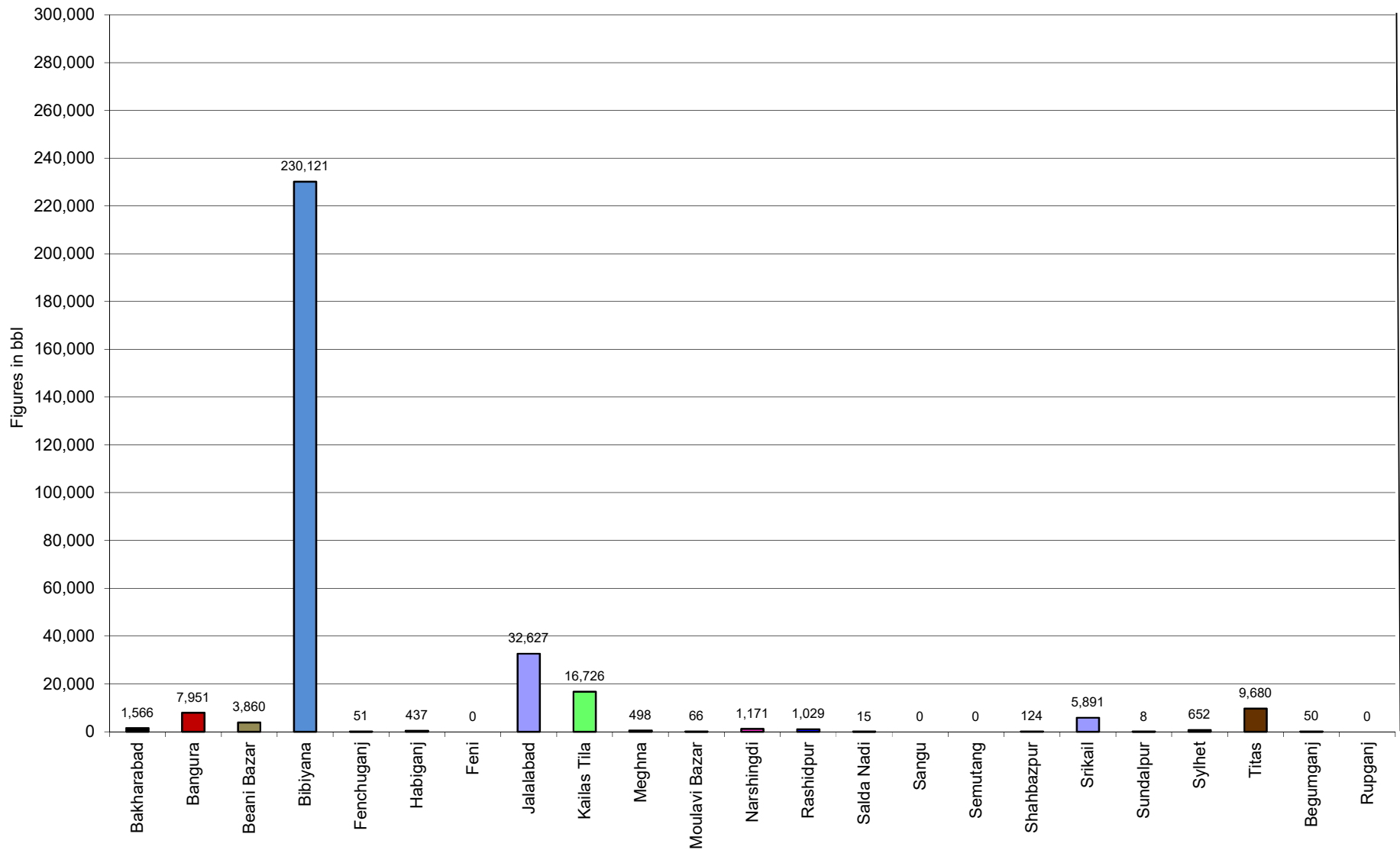
Comparison of daily avg. Gas production - National vs IOC's between November 2020 & December 2020



Daily Avg. Production - IOC and JVA December 2020



Monthly Condensate Production December 2020



Field wise Coal Reserve in Bangladesh

| SI No. | Coal Basins | Proved (Mt) | Indicated (Mt) | Inferred (Mt) | Total (Mt) |
|--------|--------------|---------------|----------------|------------------------|------------------------|
| 1 | Barapukuria | 114.32 | 211.33 | 21.06+(43-64)* | 346.71+(43-64)* |
| 2 | Phulbari | 288 | 226 | 58 | 572 |
| 3 | Khalashpir | - | 297.57 | 225.92 | 523.49 |
| 4 | Jamalganj | - | - | 1053.9 | 1053.9 |
| 5 | Dighipara | - | 105 | 495 | 600 |
| | Total | 402.32 | 839.9 | 1896.88-1917.88 | 3139.10-3160.10 |

**Resources of VI Seam in second syncline are towards SW of main basin, after Wardell Armstrong*

NOTE: Reserve Figure based on Coal Sector Development Strategy (Final), HCU, PwC

Summary of Reserve and Production of Barapukuria Coal Mine As of December 2020

| | | |
|-----------------------------------------------------------------|-------------------|------------------|
| Coal Initially Place (Proven + Probable) | 346,710 kT | 346.71 MT |
| Total Reserve of Seam VI | 285,410 kT | 285.41 MT |
| Recoverable from Seam VI Central part(Proven + Probable) | 16,540 kT* | 16.54 MT |
| Coal Production in December 2020 | 103.82 kT | 0.10 MT |
| Cumulative Production as of December 2020 | 11,769 kT | 11.77 MT |
| Remaining Reserve | 4,771 kT | 4.77 MT |

NOTE: Reserve figure based on Mines and Minerals Development Report ,HCU PwC

*Figure from BCMCL, M/S Wardell Armstrong. According to Mines and Minerals Development Report ,HCU, PwC this figure is 64.8 Mt

Barapukuria Coal Mine-MPM and P Contract (BCMCL)

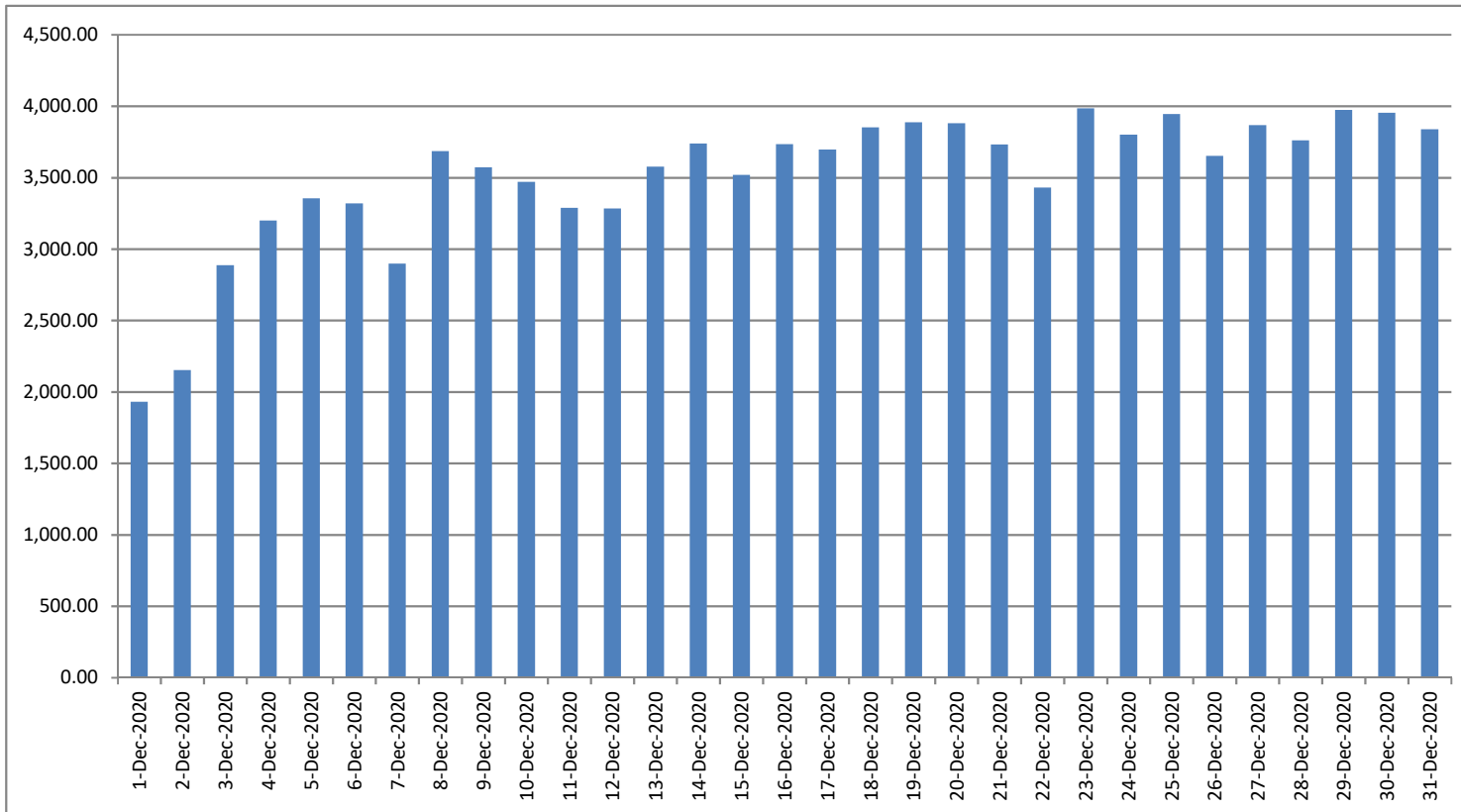
Measurement Record: Surface Belt Weigher

Measurement Period: December 2020

| Day wise data | Consortium Daily Output (ton) | Consortium Cumulative Total | BCMCL Daily Output | BCMCL Cumulative Total | Remarks |
|---------------|-------------------------------|-----------------------------|--------------------|------------------------|---------|
| 1-Dec-2020 | 1,930.14 | 1,930.14 | 1,930.14 | 1,930.14 | |
| 2-Dec-2020 | 2,151.76 | 4,081.90 | 2,151.76 | 4,081.90 | |
| 3-Dec-2020 | 2,886.47 | 6,968.37 | 2,886.47 | 6,968.37 | |
| 4-Dec-2020 | 3,200.20 | 10,168.57 | 3,200.20 | 10,168.57 | |
| 5-Dec-2020 | 3,354.37 | 13,522.94 | 3,354.37 | 13,522.94 | |
| 6-Dec-2020 | 3,319.02 | 16,841.96 | 3,319.02 | 16,841.96 | |
| 7-Dec-2020 | 2,897.71 | 19,739.67 | 2,897.71 | 19,739.67 | |
| 8-Dec-2020 | 3,685.54 | 23,425.21 | 3,685.54 | 23,425.21 | |
| 9-Dec-2020 | 3,571.10 | 26,996.31 | 3,571.10 | 26,996.31 | |
| 10-Dec-2020 | 3,469.28 | 30,465.59 | 3,469.28 | 30,465.59 | |
| 11-Dec-2020 | 3,287.80 | 33,753.39 | 3,287.80 | 33,753.39 | |
| 12-Dec-2020 | 3,282.89 | 37,036.28 | 3,282.89 | 37,036.28 | |
| 13-Dec-2020 | 3,577.43 | 40,613.71 | 3,577.43 | 40,613.71 | |
| 14-Dec-2020 | 3,739.45 | 44,353.16 | 3,739.45 | 44,353.16 | |
| 15-Dec-2020 | 3,519.30 | 47,872.46 | 3,519.30 | 47,872.46 | |
| 16-Dec-2020 | 3,733.20 | 51,605.66 | 3,733.20 | 51,605.66 | |
| 17-Dec-2020 | 3,696.15 | 55,301.81 | 3,696.15 | 55,301.81 | |
| 18-Dec-2020 | 3,850.69 | 59,152.50 | 3,850.69 | 59,152.50 | |
| 19-Dec-2020 | 3,886.55 | 63,039.05 | 3,886.55 | 63,039.05 | |
| 20-Dec-2020 | 3,880.56 | 66,919.61 | 3,880.56 | 66,919.61 | |
| 21-Dec-2020 | 3,732.82 | 70,652.43 | 3,732.82 | 70,652.43 | |
| 22-Dec-2020 | 3,429.63 | 74,082.06 | 3,429.63 | 74,082.06 | |
| 23-Dec-2020 | 3,984.67 | 78,066.73 | 3,984.67 | 78,066.73 | |
| 24-Dec-2020 | 3,801.44 | 81,868.17 | 3,801.44 | 81,868.17 | |
| 25-Dec-2020 | 3,944.77 | 85,812.94 | 3,944.77 | 85,812.94 | |
| 26-Dec-2020 | 3,651.03 | 89,463.97 | 3,651.03 | 89,463.97 | |
| 27-Dec-2020 | 3,866.27 | 93,330.24 | 3,866.27 | 93,330.24 | |
| 28-Dec-2020 | 3,761.08 | 97,091.32 | 3,761.08 | 97,091.32 | |
| 29-Dec-2020 | 3,973.42 | 101,064.74 | 3,973.42 | 101,064.74 | |
| 30-Dec-2020 | 3,952.82 | 105,017.56 | 3,952.82 | 105,017.56 | |
| 31-Dec-2020 | 3,838.74 | 108,856.30 | 3,838.74 | 108,856.30 | |

| | |
|------------------------------------------------|-------------------|
| less Difference in Water Content: | 5036.61 |
| Less Out of Seam dilution: | 0 |
| Coal adjustment for scale recalibration | 0 |
| Output (tons) measured by Belt Weigher: | 103,819.69 |
| Tonnes mined in DARR | 0 |
| Net Output after removing DARR | 103,819.69 |
| | |
| | |

Barapukuria Coal Mine Daywise Data Graph for December 2020



আসুন, যানবাহনসমূহকে অটোগ্যাসে রূপান্তর করি...

জাতীয় সম্পদ প্রাকৃতিক গ্যাস সাশ্রয় করি...

facebook

"Energy misused, cannot be excused"

আমাদের ঘরে যদি এখনো কয়েল স্টার্টার যুক্ত টিউবলাইট থেকে থাকে, আসুন আজই LED টিউবলাইট দ্বারা প্রতিস্থাপন করি।

HYDROCARBON UNIT ON FACEBOOK

“আসুন আমাদের জাতীয় সম্পদ প্রাকৃতিক গ্যাস সাশ্রয় করি”

১। **LPG** ব্যবহার করুন..

অবৈধ গ্যাস সংযোগ থেকে বিরত থাকুন

২। **CNG** নয়, অকটেন দিয়ে গাড়ি চালান...

গাড়ির ইঞ্জিনের আয়ুষ্কাল বাড়ান

চলুন আজই যানবাহনসমূহ AUTO GAS (LPG) এ রূপান্তর করি...

- * CNG এর তুলনায় LPG কনভারশনে ৫০% কম খরচ হয়
- * ৩-৫ মিনিটে ট্যাংকে ফুয়েল ভর্তি হয়, লম্বা লাইনে দাঁড়িয়ে অপেক্ষা করার প্রয়োজন পরে না
- * CNG এর তুলনায় সিলিন্ডারে জায়গা, ওজন ও প্রেশার কম দরকার
- * রক্ষণাবেক্ষণের খরচ কম
- * পেট্রলের তুলনায় AUTO GAS -এ খরচ প্রায় ৫০% কম
- * গ্যাসোলিন ও ডিজেলের তুলনায় নিঃসরণ কম

Hydrocarbon Unit

Energy & Mineral Resources Division
Ministry of Power, Energy & Mineral Resources
153, Pioneer Road
Segunbagicha, Dhaka-1000
www.hcuro.gov.bd