



Gas and Coal Reserve & Production

September 2023



ENERGY DATA CENTER



HYDROCARBON UNIT

Energy and Mineral Resources Division

Preface

Monthly Report on Gas and Coal Reserve & Production was prepared and published by Hydrocarbon Unit for the first time in July 2004. The present one is the issue for September 2023. In this report, Monthly Gas, Condensate, Water and Coal production of Bangladesh is reflected. Monthly import of Liquefied Natural Gas (LNG) has been included in the report as well. Moreover, Daily Average Gas Production; Field wise Daily Average Production; Well wise Daily Average Production; Comparison of Field wise Average Gas Production between present & previous month; Daily Average Production by Operator; Comparison of National and IOC Daily Average Production along with the graphical presentation have been depicted. Monthly Coal production data is also included in this report.

This report has been prepared based on the data directly collected from the Production companies of Petrobangla (BAPEX, BGFCL & SGFL) and IOC companies (Tullow & Chevron). Liquefied Natural Gas (LNG) import data is collected from RPGCL & Coal production data is collected from BCMCL.

It is expected that the report will be helpful as reference book and elements of interest for the concerned.

The report will also be available at HCU's website: www.hcu.gov.bd.

Md. Shameem Khan
Director General (Joint Secretary)
Hydrocarbon Unit

Executive Summary of September 2023

Total gas and condensate Production in September 2023 were 63.38 Bcf and 245536.20 Bbl. During the previous month i.e. August 2022, gas and condensate production were 66.52 Bcf and 257886.73 Bbl and in the same month of the previous year i.e. September 2022, total gas and condensate production were 69.14 Bcf and 196680.59 Bbl respectively. The National Oil Companies (NOC's) and International Oil Companies (IOC's) Produced 23.91 Bcf and 39.46 Bcf gas respectively in September 2023. During the previous month i.e. August 2023, gas production by the National Oil Companies (NOC's) and International Oil Companies (IOC's) were 25.25 Bcf and 41.27 Bcf respectively. In the month of September 2023, Bibiyana gas field Produced 32.48 Bcf gas and it ranked top among the gas producers. Average production from the field during the month of September 2023 was 1083 MMcfd. It is noted that Bibiyana gas field Produced 33.96 Bcf in August 2023.

During the month of September 2023 total production of condensate was 245536.20 Bbl compared to 257886.73 Bbl in the previous month i.e. August 2023. Bibiyana gas field Produced 179670 Bbl condensate and ranked top while Jalalabad ranked 2nd by producing 25845 Bbl.

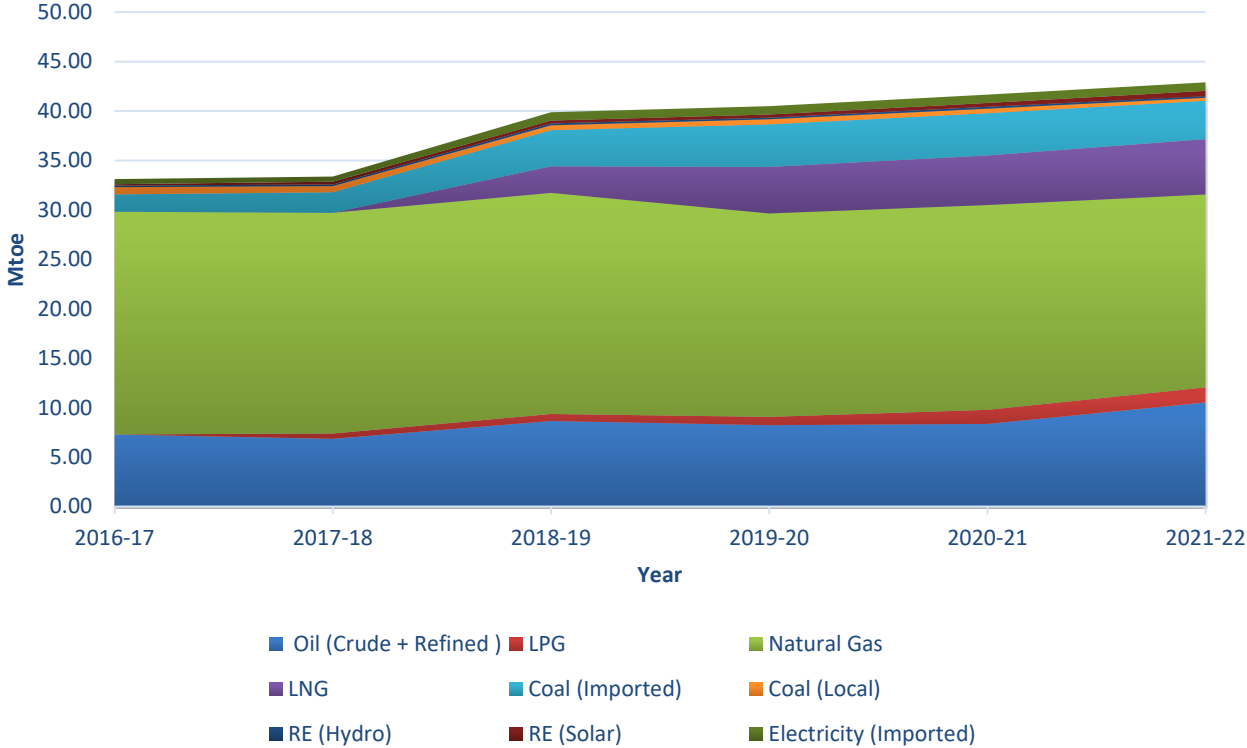
Total LNG import in September 2023 was 22.71 Bcf. As a result, Total LNG Import in this FY is 69.77 Bcf and cumulative LNG import stands on 1048.61 Bcf from August 2018.

In the month of September 2023, total coal production was 5001.95 Ton. During the previous month, i.e. August 2023 total coal production was 64254.81 Ton.

Gas Reserve & Production at a glance

Gas Initially in Place (GIIP)	:	40,092.19 Bcf
Recoverable (2P)	:	29,926.50 Bcf
Cumulative Production as of September 2023	:	20,548.43 Bcf
Remaining Reserve up to September 2023	:	9,378.07 Bcf
Gas Production in September 2023	:	63.38 Bcf
National Oil Company (NOC's) production in September 2023	:	23.91 Bcf
International Oil Company (IOC's) production in September 2023	:	39.46 Bcf
No. of National Oil Company (NOC's) in September 2023	:	3 (BGFCL, BAPEX, SGFL)
No. of International Oil Company (IOC's) in September 2023	:	2 (Chevron, Tullow)
Total gas fields of National Oil Company (NOC) in September 2023	:	21
Total gas fields of International Oil Company (IOC) in September 2023	:	5
Total gas wells of National Oil Company (NOC) in September 2023	:	115
Total gas wells of International Oil Company (IOC) in September 2023	:	60
No. of National Oil Company (NOC's) gas production well in September 2023	:	70
No. of Intl. Oil Company (IOC's) gas production well in September 2023	:	42
No. of National Oil company (NOC's) suspended well in September 2023	:	45
No. of International Oil company (IOC's) suspended well in September 2023	:	18
Total LNG Import in September 2023	:	22.71 Bcf
Total LNG Import from September 2023	:	69.77 Bcf
Cumulative LNG Import from September 2018	:	1,048.61 Bcf

Energy Transition over the Years



Reserve Estimates by Reservoir

SI No	Field	GIIP (Bcf)			Recovery Factor %	Total EUR (2P Reserve) in Bcf	
		Gas Sand	Proven +Probable	Total			EUR by sand
1	Begunganj	Zone-7	46.7	46.7	32.7	70.0%	32.7
2	Shahbazpur	I Sand	16.3	414.8	10.5	64.0%	261.2
		II Sand	57.0		36.8	64.5%	
		III Sand	241.2		147.8	61.3%	
		IV Sand	41.5		26.7	64.3%	
		V Sand	58.8		39.5	67.1%	
3	Semutang	Upper Sand	121.0	653.8	48.0	39.7%	318.0
		Middle Sand	65.8		37.0	56.2%	
		Lower Sand 1	278.0		207.0	74.5%	
		Lower Sand 2	189.0		26.0	13.8%	
4	Fenchuganj	Upper	283.7	483.3	189.6	66.8%	329.3
		Middle	75.7		50.3	66.4%	
		Lower	61.8		39.8	64.3%	
		New Gas Sand	62.0		49.6	80.0%	
5	Salda Nadi	Upper	302.7	393.1	203.8	67.3%	275.3
		Middle	22.1		25.2	113.8%	
		Lower	68.3		46.3	67.8%	
6	Srikail		230.0	230.0	161.0	70.00%	161.0
7	Sundalpur		62.2	62.2	50.2	80.70%	50.2
8	Rupganj		48.0	48.0	33.6	70.00%	33.6
BAPEX			2332.20	2332.20	1460.80		1460.80
9	Meghna	C	51.8	122.2	49.1	94.8%	101.2
		A	5.8		0.0	0.0%	
		B	1.5		0.0	0.0%	
		D	25.5		20.8	81.6%	
		E	15.5		13.2	85.2%	
		F	22.1		18.1	81.9%	
10	Narshingdi	UGS	91.2	405.2	57.7	63.3%	344.7
		LGS	314.0		287.0	91.4%	
11	Kamta	I Gas Sand	71.8	71.8	50.3	70.1%	50.3
12	Habiganj	Upper	3,756.3	3,981.1	2,629.7	70.0%	2,786.8
		Lower	224.8		157.1	69.9%	
13	Bakhrabad	B	158.1	1,824.9	110.2	69.7%	1,387.2
		D Upper	212.8		153.4	72.1%	
		D Lower	180.0		135.4	75.2%	
		G	288.0		240.0	83.3%	
		J	563.0		460.0	81.7%	
		C	34.9		24.4	69.9%	
		F	47.5		35.3	74.2%	
		K	195.7		130.3	66.6%	
		L	144.8		98.3	67.9%	
14	Titas	A Group	8,054.0	9,039	6,831.7	84.8%	7,582.2
		B and C Group	985.3		750.5	76.2%	
BGFCL			15,444.00	15,444.00	12,252.00		12,252.00
15	Sangu	10 Gas Sands	976.0	976.0	770.5	78.9%	770.5
Santos/Cairn (IOC)			976.0	976.0	770.5		770.5
16	Bibiyana	BB 60ab	3,364.6		2,927.9	87.0%	
		BB 65	595.4		518.1	87.0%	

SI No	Field	GIIP (Bcf)			Recovery Factor %	Total EUR (2P Reserve) in Bcf	
		Gas Sand	Proven +Probable	Total			EUR by sand
		BB 70	412.0	5,321.4	369.0	89.6%	4,531.7
		BH 10	182.9		123.9	67.7%	
		BH 20ab	205.1		138.9	67.7%	
		BH 20c	109.3		74.0	67.7%	
		BH 20d	47.6		32.2	67.7%	
		BH 25	193.0		169.0	87.6%	
		BH 50a	75.9		64.1	84.4%	
		BH 50b	98.0		82.1	83.8%	
		BH 60	37.5		32.5	86.7%	
17	Moulavi Bazar	BB20	35.2	630.2	19.7	56.0%	493.6
		BB50	59.0		41.6	70.5%	
		BB60	203.4		163.0	80.1%	
		BB70	253.2		206.2	81.4%	
		BB80	79.3		63.1	79.6%	
18	Jalalabad	BB20	46.1	1,346.1	157.1	73.3%	1,127.8
		BB50	371.1		33.8	84.2%	
		BB60	868.7		312.3	84.2%	
		BB70	60.1		731.1	84.2%	
Chevron (IOC)		11,593.00	11,593.00	7612.70		7612.70	
19	Feni	UGS	52.6	185.2	36.8	70.0%	129.6
		LGS	132.6		92.8	70.0%	
Niko (IOC)		185.2	185.2	130.00		130.00	
20	Kailas Tila	UGS	1,659.6	3,462.8	1,361.2	82.0%	2,880.2
		MGS	605.6		509.4	84.1%	
		LGS	1,046.0		883.0	84.4%	
		A Sand	46.2		38.6	83.6%	
		HRZ Sand	105.2		88.1	83.5%	
21	Sylhet	Tipan	40.0	580.1	28.2	70.5%	408.3
		Upper Bhuban	13.2		1.5	11.7%	
		Upper Bokabil	325.2		230.3	70.8%	
		Mid Bokabil	78.5		63.2	80.5%	
		Lower Bokabil	123.2		85.0	69.0%	
22	Rashidpur	UGS	561.5	3,887.2	396.4	70.6%	3,140.0
		MGS	2,185.1		1,767.1	80.9%	
		LGS	1,140.7		970.5	85.1%	
23	Chattak	Sand 1 and 2	272.9	677.2	191.0	70.0%	474.0
		Sand 3 and 4	201.4		141.0	70.0%	
		Sand 5 and 6	168.6		118.0	70.0%	
		Sand 7 and 8	34.3		24.0	70.0%	
24	Beani Bazar	Upper	172.8	224.5	105.4	61.0%	136.6
		Lower	51.7		31.2	60.4%	
SGFL		8,832.00	8,832.00	7,033.00		7,033.00	
25	Bangura	A	24.7	730.2	19.4	78.3%	621.4
		B	18.3		14.8	80.7%	
		C	24.9		19.1	76.7%	
		D	655.0		562.0	85.8%	
		E	7.20		6.1	84.7%	
Tullow (IOC)		730.20	730.20	621.40		621.40	
26	Katubdia	1 Gas Sand	65.0	65.0	45.5	70.0%	45.5
Total		40,092.20	40,092.20	29,926.50		29,926.50	

Table of Contents

Gas Report	Page No.
Summary	1
summary of Reserve and Production	2
Production comparison between August 2023 & September 2023	3
Production per well & production, reserve ratio	4
Monthly Production by Fields & Wells up to September 2023	5-12
Monthly Condensate Production by Fields up to September 2023	13-14
Monthly Water Production by Fields from September 2023	15-16
Conditions of Field and Well up to September 2023	17-21
Chart	
Well-wise Production of All fields in 2022-23	22
Reserve, Production and Remaining Reserve as of September 2023	23
Daily Average Gas Production from January 2017 to September 2023	24
Field wise Daily Average Production as of September 2023	25
Well wise Daily Average Production-BGFCL as of September 2023	26
Well wise Daily Average Production-BAPEX and SGFL, September 2023	27
Well wise Daily Average Production-IOC and JVA, September 2023	28
Field wise Avg Gas Production between August 2023 & September 2023	29
Daily Average Production by Operator, September 2023	30
Operator wise daily Avg Production between August 2023 & September 2023	31
Daily Average Production – National vs IOC’s, September 2023	32
Daily Avg Gas Production- National vs IOC’s between August 2023 & September 2023	33
Daily Average Production IOC’s and JVA, September 2023	34
Monthly Condensate Production, September 2023	35
Coal Report	
Summary	36-37
Barapukuria Coal Mine-MPM and P Contract (BCMCL)	38
Barapukuria Coal Mine Day wise Data Graph for September 2023	39

Summary of Reserve, Production & Import As of September 2023

Gas Initially Place (Proven + Probable)	40,092.19 Bcf	40.09 Tcf
Recoverable (Proven + Probable)	29,926.50 Bcf	29.93 Tcf
Gas Production in September 2023	63.38 Bcf	0.06 Tcf
Cumulative Gas Production as of September 2023	20,548.43 Bcf	20.55 Tcf
Remaining Reserve	9,378.07 Bcf	9.38 Tcf

NOTE: Reserve figure based on "Updated Report on Bangladesh Gas Reserve Estimation 2010", prepared by Gustavson Associates LLC, USA

Total LNG Import in September 2023	22.71 Bcf	0.02 Tcf
Total LNG Import in this FY	69.77 Bcf	0.07 Tcf
Cumulative LNG Import from August 2018	1,048.61 Bcf	1.05 Tcf

Summary of Reserve and Production

(As of Sep 2023)



Gas Bcf

Sl No.	Field	2P GIIP	2P Reserve	Gas Prod. In Sep'23	Cum. Gas Production	Remaining Reserve	Cum. Condensate Production
1	Begumganj	47.0	33.0	0.25	13.5	19.5	4
2	Shahbazpur	415.0	261.0	2.22	151.3	109.7	18
3	Semutang	654.0	318.0	0.03	14.4	303.6	5
4	Fenchuganj	483.0	329.0	0.37	174.3	154.7	122
5	Salda Nadi	393.0	275.0	0.10	98.1	176.9	60
6	Srikail*	230.0	161.0	0.92	142.4	18.6	346
7	Sundalpur *	62.2	50.2	0.23	24.9	25.3	1
8	Rupganj	48.0	33.6	0.00	0.7	32.9	1
Bapex		2,332.2	1,460.8	4.11	619.6	841.2	556
9	Meghna	122.0	101.0	0.10	80.8	20.2	132
10	Narshingdi	405.0	345.0	0.77	245.5	99.5	484
11	Kamta	72.0	50.0	0.00	21.1	28.9	4
12	Habiganj	3,981.0	2,787.0	3.69	2,720.0	67.0	150
13	Bakhrabad	1,825.0	1,387.0	0.96	874.9	512.1	1,086
14	Titas	9,039.0	7,582.0	11.51	5,360.8	2,221.2	5,796
BGFCL		15,444.0	12,252.0	17.02	9,303.0	2,949.0	7,652
15	Sangu	976.0	771.0	0.00	489.5	281.5	37
Santos/Cairn		976.0	771.0	0.00	489.5	281.5	37
16	Bibiyana**	8,383.0	5,755.4	32.48	5,697.7	57.7	32,383
17	Moulavi Bazar**	494.0	428.0	0.49	349.2	78.8	121
18	Jalalabad**	2,716.0	1,429.3	5.18	1,612.0	0.0	11,722
Chevron		11,593.0	7,612.7	38.15	7,658.9	-46.2	44,227
19	Feni	185.0	130.0	0.00	63.0	67.0	110
Niko		185.0	130.0	0.00	63.0	67.0	110
20	Kailas Tila	3,463.0	2,880.0	0.77	798.5	2,081.5	8,517
21	Sylhet	580.0	408.0	0.16	222.4	185.6	847
22	Rashidpur	3,887.0	3,134.0	1.39	706.7	2,427.3	846
23	Chattak	677.0	474.0	0.00	25.8	448.2	4
24	Beani Bazar	225.0	137.0	0.46	110.9	26.1	1,808
SGFL		8,832.0	7,033.0	2.78	1,864.3	5,168.7	12,023
25	Bangura	730.0	621.0	1.31	550.1	70.9	1,427
Tullow		730.0	621.0	1.31	550.1	70.9	1,427
26	Kutubdia	65.0	46.0	0.00	0.0	46.0	0
Total		40,092.2	29,926.5	63.38	20,548.4	9,378.1	66,031

* Preliminary reserve estimated by BAPEX

** 2P reserve estimation by Petrobangla

Production comparison between Aug'23 & Sep'23



Sl No.	Field	Gas Prod. (MMcf) in Aug'23	Daily Avg. (MMcfd) in Aug'23	Gas Prod. (MMcf) in Sep'23	Daily Avg. (MMcfd) in Sep'23
1	Begumganj	252	8	246	8
2	Shahbazpur	2495	80	2220	74
3	Semutang	26	1	28	1
4	Fenchuganj	367	12	367	12
5	Salda Nadi	103	3	101	3
6	Srikail	981	32	920	31
7	Sundalpur	242	8	234	8
8	Rupganj	0	0	0	0
Bapex		4468	144	4115	137
9	Meghna	102	3	95	3
10	Narshingdi	795	26	766	26
11	Kamta	0	0	0	0
12	Habiganj	3924	127	3693	123
13	Bakhrabad	991	32	957	32
14	Titas	12095	390	11509	384
BGFCL		17907	578	17020	567
15	Sangu	0	0	0	0
Santos/Cairn		0	0	0	0
16	Bibiyana	33965	1096	32479	1083
17	Moulavi Bazar	525	17	492	16
18	Jalalabad	5409	174	5184	173
Chevron		39898	1287	38154	1272
19	Feni	0	0	0	0
Niko		0	0	0	0
20	Kailas Tila	788	25	765	26
21	Sylhet	162	5	164	5
22	Rashidpur	1433	46	1388	46
23	Chattak	0	0	0	0
24	Beani Bazar	490	16	462	15
SGFL		2873	93	2779	93
25	Bangura	1375	44	1309	44
Tullow		1375	44	1309	44
26	Kutubdia	0	0	0	0
Total		66521	2146	63378	2113

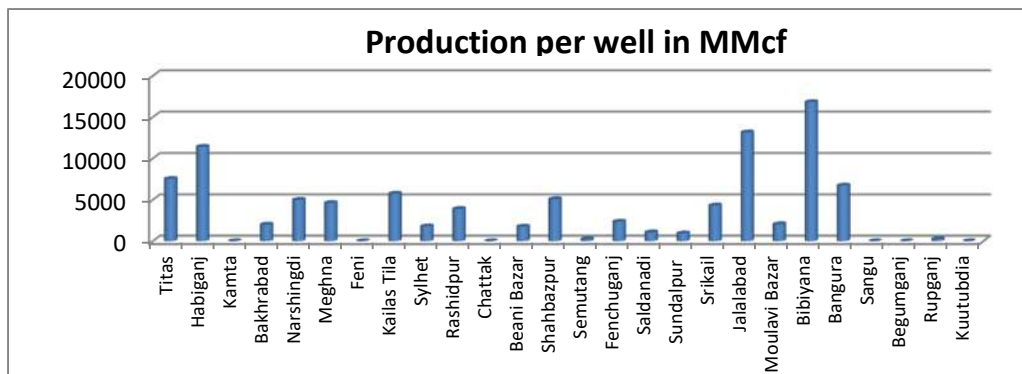
Production per well & production reserve ratio



HYDROCARBON UNIT

Energy & Mineral Resources Division

	No of production well	Total 2p- Recoverable	2022-23 production	production per well mmcf	production reserve ratio
Titas	26	7582	143.51	5519.62	0.019
Habiganj	8	2787	57.2	7150.00	0.021
Kamta	0	50	0	0.00	0.000
Bakhrabad	7	1387	12.63	1804.29	0.009
Narshingdi	2	345	9.9	4950.00	0.029
Meghna	1	101	2.63	2630.00	0.026
Feni	0	130	0	0.00	0.000
Kailas Tila	4	2880	11.31	2827.50	0.004
Sylhet	1	408	2.23	2230.00	0.005
Rashidpur	5	3134	16.12	3224.00	0.005
Chattak	0	474	0	0.00	0.000
Beani Bazar	1	137	2.7	2700.00	0.020
Shahbazpur	4	261	22.81	5702.50	0.087
Semutang	2	318	0.28	140.00	0.001
Fenchuganj	2	329	5.09	2545.00	0.015
Saldanadi	2	275	1.13	565.00	0.004
Sundalpur	1	50.2	2.78	2780.00	0.055
Srikail	3	161	14.78	4926.67	0.092
Jalalabad	7	1429.3	68.77	9824.29	0.048
Moulavi Bazar	4	428	5.09	1272.50	0.012
Bibiyana	26	5755.4	439.28	16895.38	0.076
Bangura	5	621	20.69	4138.00	0.033
Sangu	0	771	0	0.00	0.000
Begumganj	1	33	3.07	0.00	0.093
Rupganj	0	33.6	0	0.00	0.000
Kuutubdia	0	46	0	0.00	0.000
Total	112	29926.5	842	7517.86	0.028



Monthly Production by Field and Well upto September 2023



HYDROCARBON UNIT

Energy & Mineral Resources Division

Figures in mmscf

Well	Jan	Feb	Mar	Apr	May	Jun	Jul	Aug	Sep	Oct	Nov	Dec	Total	Cumulative	2022	2021	2020
Field : Bakharabad																	
BKB-1	430	385	427	412	420	406	418	418	402				3,718	162,246	4,909	4,265	4,892
BKB-2	0	0	0	0	0	0	0	0	0				0	87,012	0	0	63
BKB-3	134	122	134	127	131	127	134	131	126				1,167	169,066	1,658	1,774	1,864
BKB-4	0	0	0	0	0	0	0	0	0				0	55,872	0	0	0
BKB-5	165	145	163	159	156	154	161	159	154				1,417	66,814	1,683	1,443	1,703
BKB-6	0	0	0	0	0	0	0	0	0				0	50,069	0	0	0
BKB-7	0	0	0	0	0	0	0	0	0				0	107,750	0	0	0
BKB-8	163	146	157	143	136	129	132	132	126				1,265	138,455	2,576	2,818	2,969
BKB-9	128	109	109	117	129	119	117	108	106				1,042	29,926	1,351	1,655	2,171
BKB-10	52	45	49	47	48	45	45	44	42				418	7,683	673	811	1,015
Field Total:	1,072	953	1,039	1,007	1,021	981	1008	991	957	0	0	0	9,028	874,892	12,850	12,767	14,678
Daily Avg.(mmscfd)	35	34	34	34	33	33	33	32	32	0	0	0	33		35	35	40
Field : Bangura																	
Bangura-1	271	237	255	228	245	246	243	243	232				2,200	106,167	3,183	3,752	3,640
Bangura-2	312	273	296	187	300	294	300	300	286				2,548	99,804	3,671	4,395	4,340
Bangura-3	426	373	407	391	370	366	365	358	337				3,392	121,145	4,885	4,988	4,958
Bangura-6	205	179	196	138	221	123	129	129	124				1,444	22,371	2,349	2,413	3,700
Bangura-5	331	289	314	322	349	353	350	345	330				2,983	200,579	3,243	11,513	15,921
Field Total:	1,545	1,351	1,467	1,266	1,486	1,382	1387	1,375	1,309	0	0	0	12,567	550,067	17,331	27,062	32,559
Daily Avg.(mmscfd)	50	48	47	42	48	46	45	44	44	0	0	0	46		47	74	89
Field : Beani Bazar																	
BB-1	240	218	242	233	239	234	237	287	277				2,207	37,885	198	0	0
BB-2	206	185	205	199	205	200	204	203	184				1,790	73,015	2,605	2,809	2,940
Field Total:	446	403	446	432	444	433	441	490	462	0	0	0	3,997	110,900	2,802	2,809	2,940
Daily Avg.(mmscfd)	14	14	14	14	14	14	14	16	15	0	0	0	15		8	8	8
Field : Bibiyana																	
BY-1	1,282	1,158	1,276	1037	1,191	1,109	1173	1,197	1,131				10,554	473,216	17,288	21,751	26,283
BY-2	927	832	918	836	872	826	845	867	811				7,735	331,264	8,971	9,922	12,748
BY-3	1,080	972	1,075	858	1,037	979	1058	1,053	1,015				9,127	294,354	14,527	16,543	14,326
BY-4	1,153	1,074	1,183	989	1,153	1,090	1166	1,165	1,121				10,093	270,469	14,165	18,221	22,661
BY-5	685	617	679	579	660	589	614	611	567				5,600	208,021	9,080	9,764	5,441
BY-6	861	669	774	728	837	821	845	912	869				7,315	273,329	13,107	14,852	7,419
BY-7	1,100	1,005	1,118	895	1,091	1,000	1085	1,097	1,039				9,428	335,021	14,668	17,887	21,873
BY-8	1,619	1,448	1,593	1436	1,564	1,432	1528	1,547	1,467				13,634	203,619	17,706	19,722	9,776
BY-9	1,408	1,267	1,407	1238	1,374	1,280	1318	1,380	1,313				11,985	186,868	18,148	19,492	7,462
BY-10	1,225	1,100	1,222	1115	1,186	1,100	1112	1,185	1,128				10,373	420,168	16,290	18,834	16,678
BY-11	1,451	1,308	1,455	1296	1,424	1,329	1371	1,429	1,376				12,441	202,531	19,303	22,649	19,194

Monthly Production by Field and Well upto September 2023



HYDROCARBON UNIT
Energy & Mineral Resources Division

Figures in mmscf

Well	Jan	Feb	Mar	Apr	May	Jun	Jul	Aug	Sep	Oct	Nov	Dec	Total	Cumulative	2022	2021	2020		
BY-12	1,348	1,213	1,339	1182	1,295	1,207	1239	1,307	1,241				11,371	213,545	17,485	19,912	17,675		
BY-13	2,403	2,181	2,403	2189	2,327	2,101	2213	2,269	2,204				20,289	173,542	24,524	23,092	21,893		
BY-14	1,350	1,217	1,353	1063	1,306	1,152	1216	1,214	1,148				11,018	148,844	17,387	11,632	9,202		
BY-15	804	717	782	726	794	744	824	823	781				6,996	170,079	9,144	14,666	20,428		
BY-16	1,892	1,708	1,892	1676	1,858	1,736	1809	1,896	1,808				16,274	142,893	20,624	22,128	12,548		
BY-17	963	865	957	884	920	835	906	928	876				8,134	146,597	12,196	12,683	17,109		
BY-18	1,363	1,227	1,363	1127	1,327	1,232	1316	1,344	1,279				11,578	225,920	18,222	22,024	26,284		
BY-19	1,517	1,352	1,487	1360	1,393	1,218	1263	1,256	1,186				12,032	134,337	18,680	20,455	23,886		
BY-20	1,138	993	1,064	988	1,018	917	896	899	845				8,757	121,602	11,274	19,054	21,972		
BY-21	2,171	1,997	2,171	1987	2,098	1,891	1902	2,042	2,002				18,261	128,560	24,533	21,327	20,638		
BY-22	962	869	964	862	942	862	944	1,055	1,000				8,461	180,501	12,780	15,195	16,774		
BY-23	1,384	1,272	1,418	1317	1,388	1,316	1399	1,449	1,377				12,319	150,096	17,633	20,712	22,066		
BY-24	861	773	864	799	828	736	773	804	763				7,200	103,305	10,802	6,566	10,304		
BY-25	2,165	1,965	2,145	1978	2,083	1,877	1971	2,024	1,968				18,176	218,975	26,295	19,902	22,625		
BY-26	2,374	2,105	2,356	2190	2,262	2,033	2174	2,212	2,162				19,869	240,001	25,544	22,847	26,748		
Field Total:	35488	31904	35257	31336	34227	31410	32958	33965	32479	0	0	0	299,022	5,697,657	430,374	461,830	454,012		
Daily Avg.(mmscfd)	1145	1,139	1137	1045	1104	1047	1063	1,096	1,083	0	0	0	1,095		1,179	1,265	1,240		
Field :	Chattak																		
Ch-1	Production Suspended													25,834					
Field Total:	0			0			0			0			0			25,834			
Daily Avg.(mmscfd)	0			0			0			0			0			0			
Field :	Fenchuganj																		
Fenchuganj-2														0					
Fenchuganj-3	165	123	127	140	146	125	131	95	109				1,161	98,683	2,431	1,029	1,547		
Fenchuganj-4	236	212	236	222	238	230	251	272	258				2,155	37,413	3,191	2,486	3		
Field Total:	401	335	362	363	384	355	382	367	367	0	0	0	3,316	174,265	5,622	3,515	1,550		
Daily Avg.(mmscfd)	13	12	12	12	12	12	12	12	12	0	0	0	12		15	10	4		
Field :	Feni																		
Feni-1	Production Suspended								0	0	0	34,214							
Feni-2	Production Suspended								0	0	0	6,119							
Feni-3	Production Suspended								0	0	0	2,176							
Feni-4	Production Suspended								0	0	14,386								
Feni-5	Production Suspended								0	0	6,127								
Field Total:														63,023					
Daily Avg.(mmscfd)																			

Monthly Production by Field and Well upto September 2023



HYDROCARBON UNIT
Energy & Mineral Resources Division

Figures in mmscf

Well	Jan	Feb	Mar	Apr	May	Jun	Jul	Aug	Sep	Oct	Nov	Dec	Total	Cumulative	2022	2021	2020
Field : Habiganj																	
Hbj-1	0	0	0	0	0	0	0	0					0	287,251	92	1,276	3,651
Hbj-2	0	0	0	0	0	0	0	0					0	275,704	0	0	0
Hbj-3	621	561	621	578	590	570	587	588	570				5,285	420,244	8,119	8,784	9,952
Hbj-4	621	561	621	578	590	570	587	588	570				5,285	414,702	8,119	8,784	9,952
Hbj-5	653	589	652	631	653	630	576	418	335				5,137	336,862	8,073	8,381	8,620
Hbj-6	405	365	404	391	405	391	335	286	239				3,220	186,709	5,165	5,461	5,305
Hbj-7	1,208	1,092	1,209	1170	1207	1,169	1210	1,208	1,170				10,644	320,053	14,215	14,133	13,671
Hbj-8	0	0	0	0	0	0	0	0	0				0	11,023	0	0	0
Hbj-9	0	0	0	0	0	0	0	0	0				0	52,652	0	0	0
Hbj-10	619	559	619	599	618	587	589	588	570				5,347	294,775	7,250	8,660	9,961
Hbj-11	278	251	278	269	277	257	248	248	240				2,346	119,988	3,430	4,890	6,094
Field Total:	4,404	3,978	4,404	4,215	4,341	4,175	4132	3,924	3,693	0	0	0	37,265	2,719,962	54,462	60,368	67,206
Daily Avg.(mmscfd)	142	142	142	141	140	139	133	127	123	0	0	0	137		149	165	184
Field : Jalalabad																	
JB-1	776	704	748	682	756	763	744	775	739				6,686	288,771	9,072	8,050	9,224
JB-2	985	895	953	861	965	975	964	989	941				8,528	333,846	11,539	10,135	11,644
JB-3	1,297	1,177	1,266	1137	1,271	1,275	1240	1,294	1,233				11,191	412,066	15,205	13,420	15,132
JB-4	1	1	1	1	0	1	0	0	0				6	303,147	4,006	7,176	7,355
JB-6	1,332	1,211	1,298	1118	1,289	1,141	1242	1,302	1,262				11,194	130,914	15,513	13,697	14,814
JB-7	0	0	0	0	0	0	0	0	0				0	43,512	1	6	2,718
JB-8	1,052	957	1,026	893	1,024	966	993	1,049	1,009				8,970	99,781	12,218	10,735	11,643
Field Total:	5,443	4,947	5,292	4,691	5,304	5,121	5183	5,409	5,184	0	0	0	46,574	1,612,037	67,554	63,219	72,531
Daily Avg.(mmscfd)	176	177	171	156	171	171	167	174	173	0	0	0	171		185	173	198
Field : Kailas Tila																	
KTL-1	0	0	0	0	0	0	0	0	0				0	205,181	0	0	0
KTL-2	0	0	0	0	0	0	0	0	0				0	192,972	0	1,368	6,291
KTL-3	0	0	0	0	0	0	0	0	0				0	140,672	0	0	269
KTL-4	126	108	99	82	69	40	4	0	0				530	104,670	1,507	1,761	2,139
KTL-5	0	0	0	0	0	0	0	0	0				0	17,923	0	0	0
KTL-6	755	680	763	734	763	741	761	753	732				6,683	134,074	9,051	8,960	9,249
KTL-7	111	74	77	63	48	43	40	35	33				524	2,975	1,635	0	0

Monthly Production by Field and Well upto September 2023



HYDROCARBON UNIT
Energy & Mineral Resources Division

Figures in mmscf

Well	Jan	Feb	Mar	Apr	May	Jun	Jul	Aug	Sep	Oct	Nov	Dec	Total	Cumulative	2022	2021	2020
Field Total:	993	862	939	880	880	824	805	788	765	0	0	0	7,737	798,467	12,193	12,089	17,949
Daily Avg.(mmscfd)	32	31	30	29	28	27	26	25	26	0	0	0	28		33	33	49
Field : Kamta																	
Kamta-1	Production Suspended													21,139			
Field Total:	0													21,139			
Daily Avg.(mmscfd)																	
Field : Meghna																	
M-1	96	93	101	97	102	102	105	102	95				893	80,764	1,893	2,602	2,945
Field Total:	96	93	101	97	102	102	105	102	95	0	0	0	893	80,764	1,893	2,602	2,945
Daily Avg.(mmscfd)	3	3	3	3	3	3	3	3	3	0	0	0	3		5	7	8
Field : Moulavi Bazar																	
MV Bazar-2	46	40	86	97	109	79	102	114	106				781	58,004	833	330	1,217
MV Bazar-3	185	156	274	326	397	289	340	384	366				2,716	172,444	3,327	2,460	3,848
MV Bazar-4	30	31	22	9	15	54	19	16	12				208	60,516	228	624	266
MV Bazar-5	0	0	0	0	0	0	0	0	0					66			
MV Bazar-6	234	207	118	7	8	37	0	11	7				628	22,208	1,616	1,053	529
MV Bazar-7							12						12	5,659	0	0	0
MV Bazar-9													0	30,337	0	0	0
Field Total:	495	433	500	440	529	459	473	525	492	0	0	0	4,345	349,234	6,005	4,466	5,859
Daily Avg.(mmscfd)	16	15	16	15	17	15	15	17	16	0	0	0	16		16	12	16
Field : Narshingdi																	
N-1	485	442	488	436	487	466	483	490	474				4,250	172,109	5,828	5,812	5,960
N-2	317	285	312	282	316	301	306	305	292				2,717	73,399	3,917	4,001	3,661
Field Total:	802	726	800	718	803	767	790	795	766	0	0	0	6,967	245,507	9,746	9,814	9,621
Daily Avg.(mmscfd)	26	26	26	24	26	26	25	26	26	0	0	0	26		27	27	26
Field : Rashidpur																	
RP-1	565	510	564	544	564	548	566	569	550				4,980	197,970	6,619	6,557	6,447
RP-2	0	0	0	0	0	0	0	0	0				0	82,474	0	0	0
RP-3	217	196	217	210	217	210	217	217	210				1,911	144,452	2,555	2,444	2,891
RP-4	239	215	238	229	238	244	255	268	261				2,188	141,056	2,765	2,668	2,655

Monthly Production by Field and Well upto September 2023



HYDROCARBON UNIT
Energy & Mineral Resources Division

Figures in mmscf

Well	Jan	Feb	Mar	Apr	May	Jun	Jul	Aug	Sep	Oct	Nov	Dec	Total	Cumulative	2022	2021	2020	
RP-5	0	0	0	0	0	0	0	0	0				0	25,647	0	0	0	
RP-6	0	0	0	0	0	0	0	0	0				0	9,983	0	0	0	
RP-7	145	146	163	158	163	170	179	193	188				1,504	72,565	1,688	1,634	1,628	
RP-8	186	168	186	180	186	180	186	186	180				1,638	32,551	2,339	2,798	3,228	
Field Total:	1,353	1,235	1,368	1,321	1,368	1,352	1,403	1,433	1,388	0	0	0	12,221	706,698	15,965	16,099	16,849	
Daily Avg.(mmscfd)	44	44	44	44	44	45	45	46	46	0	0	0	45		44	44	46	
Field : Salda Nadi																		
Salda-1													0	36,904	0	0	0	
Salda-2	87	74	84	78	81	77	77	71	65				695	29,913	724	0	0	
Salda-3	57	45	23	22	27	21	24	28	32				279	30,830	563	886	1,712	
Salda-4	11	7	4	4	5	3	4	4	4				46	495	75	136	92	
Field Total:	155	126	111	104	113	102	105	103	101	0	0	0	1,020	98,142	1,361	1,022	1,804	
Daily Avg.(mmscfd)	5	5	4	3	4	3	3	3	3	0	0	0	4		4	3	5	
Field : Sangu																		
Sangu-1	0	0	0	0	0	0	0	0	0	0	0	0	0	116,191	0	0	0	
Sangu-3z	0	0	0	0	0	0	0	0	0	0	0	0	0	131,796	0	0	0	
Sangu-4	0	0	0	0	0	0	0	0	0	0	0	0		87,280				
Sangu-5	0	0	0	0	0	0	0	0	0	0	0	0		61,674				
Sangu-7	0	0	0	0	0	0	0	0	0	0	0	0		18,202				
Sangu-8	0	0	0	0	0	0	0	0	0	0	0	0		37,619				
Sangu-9	0	0	0	0	0	0	0	0	0	0	0	0	0	30,638	0	0	0	
Sangu-10	Production Suspended							0	0	0	0	0	0					
Sangu-11	0	0	0	0	0	0		0	0	0	0	0	0	6,067	0	0	0	
Field Total:	0	0	0	0	0	0	0	0	0	0	0	0	0	489,467	0	0	0	
Daily Avg.(mmscfd)	0	0	0	0	0	0	0	0	0	0	0	0	0		0	0	0	
Field : Semutang																		
Semutang-5													0	12,311	0	3	104	
Semutang-6	20	19	22	21	23	24	20	26	28				203	2,075	261	290	204	
Field Total:	20	19	22	21	23	24	20	26	28	0	0	0	203	14,386	261	293	308	
Daily Avg.(mmscfd)	1	1	1	1	1	1	1	1	1	0	0	0	1		1	1	1	

Monthly Production by Field and Well upto September 2023



HYDROCARBON UNIT
Energy & Mineral Resources Division

Figures in mmscf

Well	Jan	Feb	Mar	Apr	May	Jun	Jul	Aug	Sep	Oct	Nov	Dec	Total	Cumulative	2022	2021	2020
Field : Shahbazpur																	
Shahbazpur-1	182	63	76	0	0	223	0	0					544	23,211	134	48	254
Shahbazpur-2	545	402	214	0	0	46	553	537	478				2,775	38,220	6,906	6,132	5,129
Shahbazpur-3	442	380	508	607	435	502	478	495	473				4,320	43,798	6,663	7,520	6,301
Shahbazpur-4	674	546	644	687	549	549	763	778	719				5,909	40,417	7,381	5,987	2,374
East 1	532	500	236	0	411	466	619	685	549				3,998	5,646	1,648	0	0
Field Total:	2,375	1,891	1,677	1,294	1,395	1,786	2,413	2,495	2,220	0	0	0	17,546	151,292	21,083	19,686	14,058
Daily Avg.(mmscfd)	77	68	54	43	45	60	78	80	74	0	0	0	64		58	54	38
Field Srikail																	
Srikail-2	276	248	246	221	239	212	210	219	202				2,074	56,062	3,326	2,981	4,450
Srikail-3	190	152	106	76	95	60	79	88	66				912	47,237	2,266	1,880	3,360
Srikail-4	614	560	496	441	517	506	502	503	490				4,629	33,072	7,102	7,309	2,561
East 1	194	171	187	175	186	178	179	171	161				1,604	6,042	2,584	1,854	
Field Total:	1,274	1,131	1,036	913	1,038	955	971	981	920	0	0	0	9,219	142,413	15,279	14,024	10,371
Daily Avg.(mmscfd)	41	40	33	30	33	32	31	32	31	0	0	0	34		42	33	28
Field : Sundalpur																	
Sundalpur -1													0	9,809	0	0	0
Sundalpur -2	238	223	250	246	250	237	245	242	234				2,167	15,129	2,813	2,752	2,649
Field Total:	238	223	250	246	250	237	245	242	234	0	0	0	2,167	24,938	2,813	2,752	2,649
Daily Avg.(mmscfd)	8	8	8	8	8	8	8	8	8	0	0	0	8		8	8	7
Field : Sylhet																	
Sylhet-3	Production Suspended													89,032			
Sylhet-6	Production Suspended													91,748			
Sylhet-7	22	20	22	20	18	17	17	17	17				171	31,425	307	1,207	1,377
Surma-1	26	16	16	15	16	15	16	16	15				151	7,182	503	0	0
Sylhet-9	120	114	128	120	135	140	137	129	132				1,156	3,055	1,381	518	
Field Total:	168	150	165	155	169	172	170	162	164	0	0	0	1,477	222,442	2,192	1,207	1,377
Daily Avg.(mmscfd)	5	5	5	5	5	6	5	5	5	0	0	0	5		6	3	4
Field : Titas																	
Titas-1	511	456	494	442	510	488	496	499	477				4,372	468,152	5,838	6,039	5,626
Titas-2	718	637	685	584	701	672	689	698	651				6,035	479,421	8,452	9,335	9,217

Monthly Production by Field and Well upto September 2023



HYDROCARBON UNIT
Energy & Mineral Resources Division

Figures in mmscf

Well	Jan	Feb	Mar	Apr	May	Jun	Jul	Aug	Sep	Oct	Nov	Dec	Total	Cumulative	2022	2021	2020
Titas-3	0	0	0	0	0	0	0	0	0				0	314,888	0	0	0
Titas-4	780	714	786	684	800	764	776	793	759				6,856	416,349	9,122	9,551	9,356
Titas-5	817	740	822	698	817	771	781	799	769				7,014	476,171	9,770	9,889	9,526
Titas-6	817	760	808	635	782	780	809	831	800				7,021	408,997	10,079	9,754	9,401
Titas-7	711	650	714	593	701	689	697	685	652				6,092	375,825	8,312	4,528	1,784
Titas-8	565	522	588	489	563	539	553	576	558				4,953	301,773	6,649	6,569	5,115
Titas-9	521	459	500	418	516	494	526	519	500				4,453	305,697	6,380	6,404	5,770
Titas-10	652	573	638	528	638	618	625	636	629				5,536	235,312	7,998	7,512	7,397
Titas-11	702	634	696	664	678	646	655	685	654				6,016	287,272	8,511	7,571	9,440
Titas-12	462	413	458	441	461	453	454	449	432				4,023	125,021	5,192	4,363	5,428
Titas-13	0	0	0	0	0	0	0	0	0				0	194,541	0	0	0
Titas-14	0	0	0	0	0	0	0	0	0				0	163,216	0	2,195	4,966
Titas-15	265	213	159	121	113	23	51	56	27				1,029	155,674	2,653	3,194	4,306
Titas-16	585	546	605	498	580	556	561	582	532				5,045	178,391	6,781	6,637	6,373
Titas-17	380	335	326	299	310	271	339	347	308				2,915	62,182	4,551	4,450	4,969
Titas-18	465	406	393	369	393	327	364	373	354				3,444	63,048	5,227	5,093	5,166
Titas-19	527	505	550	447	499	502	502	514	482				4,529	53,801	5,690	5,187	4,754
Titas-20	306	261	258	276	289	295	293	273	266				2,518	36,406	3,622	4,031	3,817
Titas-21	279	281	251	255	274	267	264	272	262				2,405	23,960	3,375	3,020	2,892
Titas-22	0	0	0	0	0	0	0	0	0				0	30,349	0	362	2,436
Titas-27	487	423	427	399	436	397	396	430	425				3,822	54,916	6,002	5,418	5,233
Titas-23	543	506	581	557	571	530	540	531	510				4,870	37,476	5,880	6,314	5,328
Titas-24	0	0	0	0	0	176	257	260	247				941	10,422	462	0	1,238
Titas-25	478	423	482	483	454	416	432	445	411				4,026	39,416	5,889	5,439	5,424
Titas-26	789	716	791	756	788	784	819	840	801				7,085	62,083	8,956	9,188	8,961
Field Total:	12,362	11,173	12,013	10,636	11,875	11,459	11881	12,095	11,509	0	0	0	105,002	5,360,759	145,392	142,044	143,923
Daily Avg.(mmscfd)	399	399	388	355	383	382	383	390	384	0	0	0	385		398	389	393
Field :	Begumganj																
Begumganj-3	252	227	251	242	255	242	250	252	246				2,217	13,471	2,976	2,719	1,940
Field Total:	252	227	251	242	255	242	250	252	246	0	0	0	2,217	13,471	2,976	2,719	1,940
Daily Avg.(mmscfd)	8	8	8	8	8	8	8	8	8	0	0	0	8		8	7	5
Field :	Rupganj																
Rupganj-1	0	0	0	0	0	0	0	0	0	0	0	0	0	679	0	0	0

Monthly Production by Field and Well upto September 2023



HYDROCARBON UNIT

Energy & Mineral Resources Division

Figures in mmscf

Well	Jan	Feb	Mar	Apr	May	Jun	Jul	Aug	Sep	Oct	Nov	Dec	Total	Cumulative	2022	2021	2020
Field Total:	0	0	0	0	0	0	0	0	0	0	0	0	0	679	0	0	0
Daily Avg.(mmscfd)	0	0	0	0	0	0	0	0	0	0	0	0	0		0	0	0
Grand Total (in Bcf)	69.38	62.16	67.50	60.38	66.01	62.34	65.12	66.52	63.38	0.00	0.00	0.00	582.8	20,548.43	828.2	858.5	875.1
Daily Avg.(mmscfd)	2,238	2,220	2,177	2,013	2,129	2,078	2,101	2,146	2,113	0	0	0	2,135		2,269	2,352	2,391

Monthly Condensate Production by Fields upto September 2023



Field Name	Jan	Feb	Mar	Apr	May	Jun	Jul	Aug	Sep	Oct	Nov	Dec	Total	Cumulative	2022	2021	
														000' bbl			
Bakhrabad	1,372	1,110	1,311	1,176	1,181	1,177	1,173	1,171	1,119				10,790	1,086	14,234	14,882	
Daily Avg.	44	40	42	39	38	39	38	38	37	0	0	0	40		39	41	
Bangura	4,830	4,270	4,519	3,693	4,241	4,493	4,073	3,998	3,745				37,862	1,427	49,145	75,148	
Daily Avg.	156	153	146	123	137	150	131	129	125	0	0	0	139		135	206	
Beani Bazar	7,447	6,602	7,068	6,727	6,874	6,526	6,662	7,413	6,911				62,230	1,808	40,093	41,982	
Daily Avg.	240	236	228	224	222	218	215	27	230	0	0	0	228		110	115	
Bibiyana	202,652	172,809	196,670	166,711	192,336	178,219	179,052	190,136	179,670				1,658,255	32,383	1,647,046	2,048,709	
Daily Avg.	6,537	6,172	6,344	5,557	6,204	5,941	5,776	6,133	5,989	0	0	0	6,074		4,512	5,613	
Chattak	0	0	0	0	0	0	0	0	0	0	0	0	0	4	0	0	
Daily Avg.	0	0	0	0	0	0	0	0	0	0	0	0	0		0	0	
Fenchuganj	168	120	165	111	110	96	124	140	137				1,171	122	2,396	2,460	
Daily Avg.	5	4	5	4	4	3	4	5	5	0	0	0	4		7	7	
Feni	0	0	0	0	0	0	0	0	0	0	0	0	0	110	0	0	
Daily Avg.	0	0	0	0	0	0	0	0	0	0	0	0	0		0	0	
Habiganj	250	175	177	178	207	192	212	178	137				1,706	150	2,705	3,416	
Daily Avg.	8	6	6	6	7	6	7	6	5	0	0	0	6		7	9	
Jalalabad	26,767	23,093	24,081	21,751	25,507	24,233	24,606	26,140	25,845				222,023	11,722	329,117	346,435	
Daily Avg.	863	825	777	725	823	808	794	843	862	0	0	0	813		902	949	
Kailas Tila	12,473	10,800	11,780	11,366	11,217	10,769	10,306	9,917	9,882				98,510	8,517	149,408	126,611	
Daily Avg.	402	386	380	379	362	359	332	320	329	0	0	0	361		409	347	
Kamta	Production Suspended									0	0			4			
Daily Avg.	0									0	0		0		0	0	0
Meghna	181	152	176	188	204	165	164	194	176				1,600	132	3,491	5,456	
Daily Avg.	6	5	6	6	7	6	5	6	6	0	0	0	6		10	15	
Moulavi Bazar	44	36	40	39	52	44	44	52	49				399	121	995	847	
Daily Avg.	1	1	1	1	2	1	1	2	2	0	0	0	1		3	2	
Narshingdi	1,151	1,037	1,013	944	1,002	953	988	994	945				9,027	484	14,905	14,370	

Monthly Condensate Production by Fields upto September 2023



Field Name	Jan	Feb	Mar	Apr	May	Jun	Jul	Aug	Sep	Oct	Nov	Dec	Total	Cumulative	2022	2021
														000' bbl		
Daily Avg.	37	37	33	31	32	32	32	32	32	0	0	0	33		41	39
Rashidpur	1,202	1,119	1,228	1,155	1,198	1,189	1,228	1,253	1,209				10,781	846	14,105	14,274
Daily Avg.	39	40	40	39	39	40	40	40	40	0	0	0	39		39	39
Saldanadi	70	56	54	56	53	56	55	57	52				509	60	585	118
Daily Avg.	2	2	2	2	2	2	2	2	2	0	0	0	2		2	0
Sangu	0	0	0	0	0	0	0	0	0	0	0	0	0	37	0	0
Daily Avg.	0	0	0	0	0	0	0	0	0	0	0	0	0		0	0
Semutang	0	0	0	0	0	0	0	0	0	0	0	0	0	5	0	0
Daily Avg.	0	0	0	0	0	0	0	0	0	0	0	0	0		0	0
Shahbazpur	255	239	236	165	150	194	269	301	273				2,082	18	2,640	2,655
Daily Avg.	8	9	8	6	5	6	9	10	9	0	0	0	8		7	7
Srikail	5,592	4,372	4,247	3,442	4,259	3,819	3,876	4,014	3,724				37,345	346	63,152	61,474
Daily Avg.	180	156	137	115	137	127	125	129	124	0	0	0	137		173	168
Sundalpur	10	10	11	11	11	10	11	11	14				99	1	152	121
Daily Avg.	0	0	0	0	0	0	0	0	0	0	0	0	0		0	0
Sylhet	1,159	1,027	1,089	983	843	1,040	959	805	1,051				8,956	847	13,919	10,261
Daily Avg.	37	37	35	33	27	35	31	26	35	0	0	0	33		38	28
Titas	9,744	8,313	8,719	8,562	10,005	10,471	10,704	11,012	10,504				88,034	5,796	115,793	108,670
Daily Avg.	314	297	281	285	323	349	345	355	350	0	0	0	322		317	298
Begumganj	68	64	68	62	84	72	74	101	95				688	4	814	831
Daily Avg.	2	2	0	0	0	2	2	3	0	0	0	0	3		2	2
Rupganj	0	0	0	0	0	0	0	0	0	0	0	0	0	1	0	0
Daily Avg.	0	0	0	0	0	0	0	0	0	0	0	0	0		0	0
Total (000'bbl)	275	235	263	227	260	244	245	258	246	0	0	0	2,252	66,031	2,465	2,879
Daily Avg. (000'bbl)	8.9	8.4	8.5	7.6	8.4	8	7.9	8.3	8.2	0.0	0	0	8		6.8	7.9

Note: Historical condensate figure of Sangu available from 2006. Sylhet available from August 1964

Monthly Water Production by Fields in September 2023



HYDROCARBON UNIT
Energy & Mineral Resources Division

Field Name	Jan	Feb	Mar	Apr	May	Jun	Jul	Aug	Sep	Oct	Nov	Dec	Total	2022	2,021
Bakhrabad	7,168	6,695	7,869	7,948	8,318	8,571	9,323	9,623	9,499				75,014	41,667	23,532
Daily Avg.	231	239	254	265	268	286	301	310	317	0	0	0	275	114	64
Bangura	3,188	2,788	3,038	2,614	3,078	3,077	2,909	2,942	2,858				26,492	228,414	247,538
Daily Avg.	103	100	98	87	99	103	94	95	95	0	0	0	97	626	678
Beani Bazar	21,352	19,232	21,227	20,897	21,576	21,238	21,925	21,992	20,263				189,702	227,536	202,439
Daily Avg.	689	687	685	697	696	708	707	709	675	0	0	0	695	623	555
Bibiya	23,666	22,304	24,852	23,096	24,722	22,725	30,664	30,601	28,949				231,579	300,138	211,873
Daily Avg.	763	797	802	770	797	758	989	987	965	0	0	0	848	822	580
Chattak	0	0	0	0	0	0	0	0	0	0	0	0			
Daily Avg.	0	0	0	0	0	0	0	0	0	0	0	0	0	0	0
Fenchuganj	3,870	2,886	3,335	3,681	4,106	3,481	3,600	3,328	3,674				31,961	40,238	22,412
Daily Avg.	125	103	108	123	132	116	116	107	122	0	0	0	117	110	61
Feni	0	0	0	0	0	0	0	0	0	0	0	0	0	0	0
Daily Avg.	0	0	0	0	0	0	0	0	0	0	0	0	0	0	0
Habiganj	7,098	6,371	7,133	7,133	8,745	8,897	9,490	10,985	11,819				77,671	76,382	40,135
Daily Avg.	229	228	230	238	282	297	306	354	394	0	0	0	285	209	110
Jalalabad	1,371	1,904	2,097	1,842	1,172	2,029	2,065	2,162	1,338				15,980	46,828	63,469
Daily Avg.	44	68	68	61	38	68	67	70	45	0	0	0	59	128	174
Kailas Tila	34,680	36,989	44,571	43,895	48,493	54,487	48,483	21,750	23,145				356,493	166,147	145,547
Daily Avg.	1,119	1,321	1,438	1,463	1,564	1,816	1,564	702	772	0	0	0	1,306	455	399
Kamta	0	0	0	0	0	0	0	0	0	0	0	0			
Daily Avg.	0	0	0	0	0	0	0	0	0	0	0	0	0	0	0
Meghna	8,272	7,704	8,550	8,439	8,835	8,819	9,071	8,947	8,925				77,562	85,545	22,459
Daily Avg.	267	275	276	281	285	294	293	289	298	0	0	0	284	234	62
Moulavi Baz	274	214	242	237	274	240	225	253	249				2,209	3,396	2,559
Daily Avg.	9	8	8	8	9	8	7	8	8	0	0	0	8	9	7
Narshingdi	906	822	897	812	901	869	894	895	856				7,852	11,738	10,185
Daily Avg.	29	29	29	27	29	29	29	29	29	0	0	0	29	32	28
Rashidpur	21,024	19,881	22,380	21,654	22,379	21,851	22,805	23,114	22,477				197,565	236,678	237,280
Daily Avg.	678	710	722	722	722	728	736	746	749	0	0	0	724	648	650
Saldanadi	139	106	114	99	111	104	97	99	87				956	1,564	1,169
Daily Avg.	4	4	4	3	4	3	3	3	3	0	0	0	4	4	3

Monthly Water Production by Fields in September 2023



HYDROCARBON UNIT

Energy & Mineral Resources Division

Field Name	Jan	Feb	Mar	Apr	May	Jun	Jul	Aug	Sep	Oct	Nov	Dec	Total	2022	2,021
Sangu	0	0	0	0	0	0	0	0	0	0	0	0	0	0	0
Daily Avg	0	0	0	0	0	0	0	0	0	0	0	0	0	0	0
Semutang	3,813	3,516	3,973	3,923	4,456	5,142	4,605	5,526	6,385				41,339	35,265	1,175
Daily Avg	123	126	128	131	144	171	149	178	213	0	0	0	151	97	3
Shahbazpur	2,903	2,331	2,072	1,595	1,729	2,201	2,962	3,093	2,754				21,640	27,855	24,246
Daily Avg.	94	83	67	53	56	73	96	100	92	0	0	0	79	76	66
Srikail	1,959	1,703	1,631	1,357	1,574	1,396	1,434	1,540	1,459				14,053	19,797	15,601
Daily Avg.	63	61	53	45	51	47	46	50	49	0	0	0	51	54	43
Sundalpur	41	40	44	45	45	43	45	43	93				439	541	481
Daily Avg.	1	1	1	2	1	1	1	1	3	0	0	0	2	1	1
Sylhet	16,383	14,808	16,402	15,834	16,215	15,721	16,260	16,304	15,783				143,710	176,282	139,166
Daily Avg.	528	529	529	528	523	524	525	526	526	0	0	0	526	483	381
Titas	19,903	17,281	16,226	13,881	15,251	12,283	13,715	14,344	12,340				135,224	210,230	213,927
Daily Avg.	642	617	523	463	492	409	442	463	411	0	0	0	495	576	586
Begumganj	86	76	87	74	70	77	79	78	80				707	1,024	962
Daily Avg.	3	3	3	2	2	3	3	3	3	0	0	0	3	3	3
Rupganj	0	0	0	0	0	0	0	0	0	0	0	0	0	0	0
Daily Avg.	0	0	0	0	0	0	0	0	0	0	0	0	0	0	0
Total (000'b	178,096	167,651	186,740	179,056	192,051	193,251	200,651	177,619	173,034	0	0	0	1,648,149	1,937,265	1,626,156
Daily Avg. (000'bbl)	5,745	5,988	6,024	5,969	6,195	6,442	6,473	5,730	5,768	0	0	0	6,037	5,308	4,455

Conditions of Field and Well upto September 2023



Well	company	well type	Discovery	production start	Drilled depth (ft)	Pressure	Pressure type	Completion Zone
Field : Bakharabad								
BKB-1	BGFCL	Vertical	1969	June, 1969	9309		FWHP	J
BKB-2	BGFCL	Directional	1969	October, 1981	7496	248-274	FWHP	G
BKB-3	BGFCL	Directional	1969	April, 1982	9339	356-412	FWHP	G
BKB-4	BGFCL	Directional	1969	June, 1982	9430			D
BKB-5	BGFCL	Directional	1969	Sept, 1982	9675	1555-1646	FWHP	B
BKB-6	BGFCL	Directional	1969	March, 1989	8785			J
BKB-7	BGFCL	Directional	1969	July, 1989	8605		FWHP	J
BKB-8	BGFCL	Directional	1969	Sept, 1989	8840	490-523	FWHP	J
BKB-9	BGFCL	Vertical	1969	August, 2013	8318	1005-1097	FWHP	G
BKB-10	BGFCL	Directional	1969	June, 2016	9291	1010-1102	FWHP	K
Field : Bangura								
Bangura-1	Tullow		2004			887-940	FWHP	D
Bangura-2	Tullow		2004			587-685	FWHP	D/E
Bangura-3	Tullow		2004			719-789	FWHP	D
Bangura-6	Tullow		2004			708-780	FWHP	D
Bangura-5	Tullow		2004			579-621	FWHP	D
Field : Beani Bazar								
BB-1	SGFL		1981	July, 1999	13480	580-620	SIWHP	Upper
BB-2	SGFL		1981	July, 1999	12048	3210-3220	FWHP	Upper
Field : Bibiyana								
BY-1	Chevron		1998			1547-2007	FWHP	BB60, BB66
BY-2	Chevron		1998			1313-1390	FWHP	BB60, BH20A, BH20E
BY-3	Chevron		1998			1363-1403	FWHP	BB70
BY-4	Chevron		1998			1330-1390	FWHP	BH10
BY-5	Chevron		1998			1254-1299	FWHP	BH20A, BH20B, BH20C, BH20D
BY-6	Chevron		1998			1250-1486	FWHP	BB70
BY-7	Chevron		1998			1454-1566	FWHP	BH10
BY-8	Chevron		1998			1270-1297	FWHP	BH20A, BH20B
BY-9	Chevron		1998			1243-1273	FWHP	BH10
BY-10	Chevron		1998			1465-1533	FWHP	BB60
BY-11	Chevron		1998			1260-1284	FWHP	BH20A, BH20B
BY-12	Chevron		1998			1259-1332	FWHP	BB70
BY-13	Chevron		1998			1300-1356	FWHP	BH20A, BH20B
BY-14	Chevron		1998			1342-1632	FWHP	BH20A, BH20B
BY-15	Chevron		1998			2189-2240	FWHP	BB60
BY-16	Chevron		1998			1381-1644	FWHP	BH10, BH20D

Conditions of Field and Well upto September 2023



Well	company	well type	Discovery	production start	Drilled depth (ft)	Pressure	Pressure type	Completion Zone
BY-17	<i>Chevron</i>		<i>1998</i>			<i>2104-2229</i>	<i>FWHP</i>	<i>BB60</i>
BY-18	<i>Chevron</i>		<i>1998</i>			<i>1904-2218</i>	<i>FWHP</i>	<i>BB60</i>
BY-19	<i>Chevron</i>		<i>1998</i>			<i>1354-1477</i>	<i>FWHP</i>	<i>BH10, BH20A</i>
BY-20	<i>Chevron</i>		<i>1998</i>			<i>1248-1262</i>	<i>FWHP</i>	<i>BH20D, BH20A, BH10</i>
BY-21	<i>Chevron</i>		<i>1998</i>			<i>1333-1348</i>	<i>FWHP</i>	<i>BH20A, BH20B, BH10</i>
BY-22	<i>Chevron</i>		<i>1998</i>			<i>1552-1586</i>	<i>FWHP</i>	<i>BB60</i>
BY-23	<i>Chevron</i>		<i>1998</i>			<i>1739-2021</i>	<i>FWHP</i>	<i>BH10, BH20A, BH20B, BH20C</i>
BY-24	<i>Chevron</i>		<i>1998</i>			<i>1337-2091</i>	<i>FWHP</i>	<i>BB60</i>
BY-25	<i>Chevron</i>		<i>1998</i>			<i>1728-1857</i>	<i>FWHP</i>	<i>BB60, BB66</i>
BY-26	<i>Chevron</i>		<i>1998</i>			<i>1877-2094</i>	<i>FWHP</i>	<i>BB60, BB64</i>
Field : Chattak								
Ch-1	SGFL		1959					
Field : Fenchuganj								
Fenchuganj-2	<i>BAPEX</i>		<i>1988</i>	<i>May, 2004</i>				
Fenchuganj-3	<i>BAPEX</i>		<i>1988</i>	<i>February, 2005</i>		<i>2004-2010</i>		<i>upper</i>
Fenchuganj-4	<i>BAPEX</i>		<i>1988</i>			<i>2037-2065</i>		
Field : Feni								
Feni-1	<i>BAPEX</i>		<i>1981</i>					
Feni-2	<i>BAPEX</i>		<i>1981</i>					
Feni-3	<i>BAPEX</i>		<i>1981</i>					
Feni-4	<i>BAPEX</i>		<i>1981</i>					
Feni-5	<i>BAPEX</i>		<i>1981</i>					
Field : Habiganj								
Hbj-1	<i>BGFCL</i>	<i>Vertical</i>	<i>1963</i>	<i>Feb,1969</i>	<i>11500</i>		<i>FWHP</i>	<i>upper</i>
Hbj-2	<i>BGFCL</i>	<i>Vertical</i>	<i>1963</i>	<i>Feb,1969</i>	<i>5100</i>		<i>FWHP</i>	<i>upper</i>
Hbj-3	<i>BGFCL</i>	<i>Vertical</i>	<i>1963</i>	<i>July,1985</i>	<i>5282</i>	<i>1478-1486</i>	<i>FWHP</i>	<i>upper</i>
Hbj-4	<i>BGFCL</i>	<i>Vertical</i>	<i>1963</i>	<i>May,1985</i>	<i>5249</i>	<i>1460-1467</i>	<i>FWHP</i>	<i>upper</i>
Hbj-5	<i>BGFCL</i>	<i>Directional</i>	<i>1963</i>	<i>Feb,1992</i>	<i>11552</i>	<i>1440-1446</i>	<i>FWHP</i>	<i>upper</i>
Hbj-6	<i>BGFCL</i>	<i>Vertical</i>	<i>1963</i>	<i>Feb,1992</i>	<i>5515</i>	<i>1375-1379</i>	<i>FWHP</i>	<i>upper</i>
Hbj-7	<i>BGFCL</i>	<i>Vertical</i>	<i>1963</i>	<i>April,2000</i>	<i>10236</i>	<i>1331-1139</i>	<i>FWHP</i>	<i>upper</i>
Hbj-8	<i>BGFCL</i>	<i>Vertical</i>	<i>1963</i>	<i>May, 2000</i>	<i>5280</i>			<i>upper</i>
Hbj-9	<i>BGFCL</i>	<i>Vertical</i>	<i>1963</i>	<i>July,1998</i>	<i>5249</i>			<i>upper</i>
Hbj-10	<i>BGFCL</i>	<i>Vertical</i>	<i>1963</i>	<i>Apr, 2000</i>	<i>5133</i>	<i>1322-1331</i>	<i>FWHP</i>	<i>upper</i>
Hbj-11	<i>BGFCL</i>	<i>Vertical</i>	<i>1963</i>	<i>February,2008</i>	<i>10499</i>	<i>1417-1423</i>	<i>FWHP</i>	<i>upper</i>
Field : Jalalabad								
JB-1	<i>Chevron</i>		<i>1989</i>			<i>1333-1436</i>	<i>FWHP</i>	<i>BB60, BB50</i>
JB-2	<i>Chevron</i>		<i>1989</i>			<i>1279-1294</i>	<i>FWHP</i>	<i>BB50, BB60</i>

Conditions of Field and Well upto September 2023



Well	company	well type	Discovery	production start	Drilled depth (ft)	Pressure	Pressure type	Completion Zone
JB-3	<i>Chevron</i>		<i>1989</i>			<i>1332-1375</i>	<i>FWHP</i>	<i>BB50, BB60</i>
JB-4	<i>Chevron</i>		<i>1989</i>			<i>1365-1425</i>	<i>FWHP</i>	<i>BB60</i>
JB-6	<i>Chevron</i>		<i>1989</i>			<i>1354-1362</i>	<i>FWHP</i>	<i>BB60, BB50</i>
JB-7	<i>Chevron</i>		<i>1989</i>			<i>1666-1679</i>	<i>FWHP</i>	<i>BB20</i>
JB-8	<i>Chevron</i>		<i>1989</i>			<i>1362-1370</i>	<i>FWHP</i>	<i>BB50, BB60</i>
Field : Kailas Tila								
KTL-1	<i>SGFL</i>		<i>1962</i>	<i>June, 1983</i>	<i>12417</i>	<i>0</i>	<i>SIWHP</i>	
KTL-2	<i>SGFL</i>		<i>1962</i>	<i>Feb, 1995</i>		<i>2225-2230</i>	<i>FWHP</i>	
KTL-3	<i>SGFL</i>		<i>1962</i>	<i>March, 1995</i>		<i>2470-2495</i>	<i>FWHP</i>	
KTL-4	<i>SGFL</i>		<i>1962</i>	<i>March, 1997</i>		<i>2360-2410</i>	<i>FWHP</i>	
KTL-5	<i>SGFL</i>		<i>1962</i>	<i>Sep, 2006</i>		<i>0</i>	<i>SIWHP</i>	
KTL-6	<i>SGFL</i>		<i>1962</i>	<i>Aug, 2007</i>		<i>2490-2495</i>	<i>FWHP</i>	
KTL-7	<i>SGFL</i>		<i>1962</i>			<i>0</i>	<i>SIWHP</i>	
Field : Kamta								
Kamta-1	<i>BGFCL</i>	<i>Vertical</i>	<i>1981</i>	<i>july,1982</i>	<i>11857</i>			<i>N/A</i>
Field : Meghna								
M-1	<i>BGFCL</i>	<i>Vertical</i>	<i>2004</i>	<i>july,1990</i>	<i>10069</i>	<i>1400-1450</i>	<i>FWHP</i>	<i>A,E,F & G</i>
Field : Moulavi Bazar								
MV Bazar-2	<i>Chevron</i>		<i>1997</i>			<i>800-820</i>	<i>FWHP</i>	<i>BB70</i>
MV Bazar-3	<i>Chevron</i>		<i>1997</i>			<i>800-820</i>	<i>FWHP</i>	<i>BB70</i>
MV Bazar-4	<i>Chevron</i>		<i>1997</i>			<i>946-952</i>	<i>FWHP</i>	<i>BB20</i>
MV Bazar-5	<i>Chevron</i>		<i>1997</i>			<i>0</i>	<i>SIWHP</i>	<i>BB60</i>
MV Bazar-6	<i>Chevron</i>		<i>1997</i>			<i>822-890</i>	<i>FWHP</i>	<i>BB20</i>
MV Bazar-7	<i>Chevron</i>		<i>1997</i>			<i>844-901</i>	<i>FWHP/SIWHP</i>	<i>BB20</i>
MV Bazar-9	<i>Chevron</i>		<i>1997</i>			<i>0</i>	<i>SIWHP</i>	<i>BB46, BB48, BB60</i>
Field : Narshingdi								
N-1	<i>BGFCL</i>	<i>vertical</i>	<i>1990</i>	<i>october,1990</i>	<i>11320</i>	<i>1143-1197</i>	<i>FWHP</i>	<i>BL</i>
N-2	<i>BGFCL</i>	<i>vertical</i>	<i>1990</i>	<i>february,2007</i>	<i>10778</i>	<i>1015-1097</i>	<i>FWHP</i>	<i>BL</i>
Field : Rashidpur								
RP-1	<i>SGFL</i>		<i>1960</i>			<i>1290-1291</i>	<i>FWHP</i>	<i>Upper</i>
RP-2	<i>SGFL</i>		<i>1960</i>			<i>73</i>	<i>SIWHP</i>	<i>Lower</i>
RP-3	<i>SGFL</i>		<i>1960</i>			<i>1548-1568</i>	<i>FWHP</i>	<i>Lower</i>
RP-4	<i>SGFL</i>		<i>1960</i>			<i>1450-1655</i>	<i>FWHP</i>	<i>Lower</i>
RP-5	<i>SGFL</i>		<i>1960</i>			<i>2291</i>	<i>SIWHP</i>	<i>Lower</i>
RP-6	<i>SGFL</i>		<i>1960</i>			<i>870</i>	<i>SIWHP</i>	<i>A</i>
RP-7	<i>SGFL</i>		<i>1960</i>			<i>1308-1338</i>	<i>FWHP</i>	<i>Lower</i>
RP-8	<i>SGFL</i>		<i>1960</i>			<i>1600-1625</i>	<i>FWHP</i>	<i>Upper</i>

Conditions of Field and Well upto September 2023



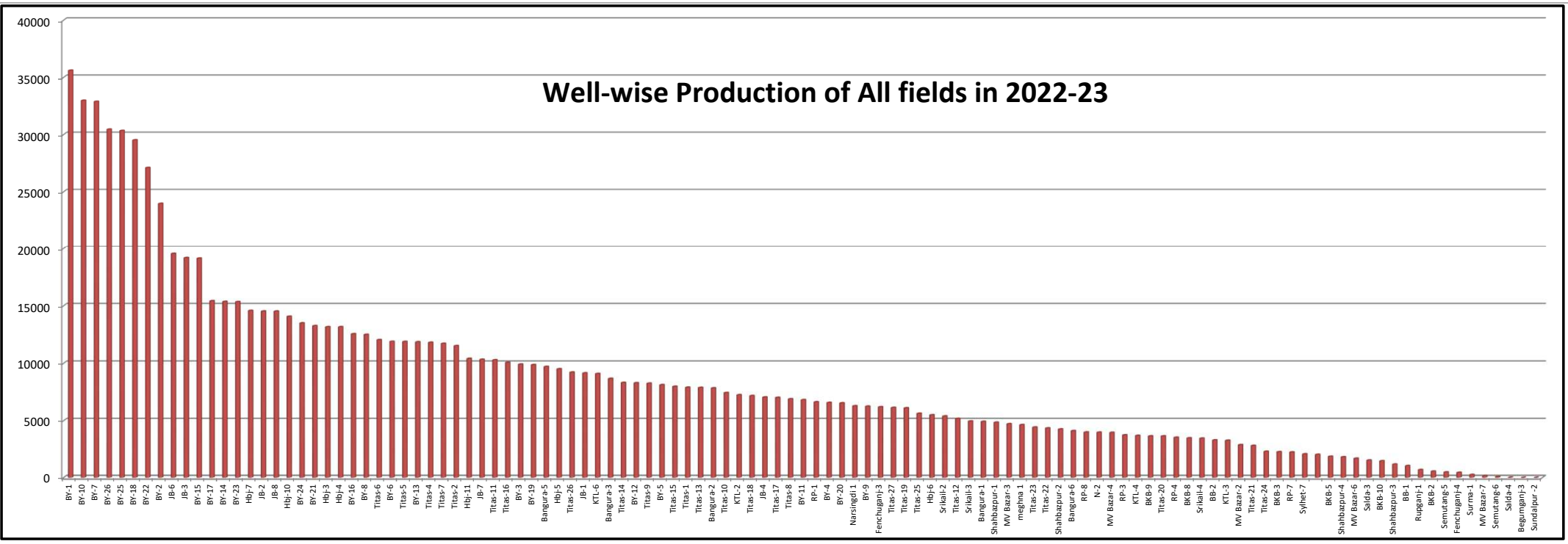
Well	company	well type	Discovery	production start	Drilled depth (ft)	Pressure	Pressure type	Completion Zone
Field : Salda Nadi								
Salda-1	BAPEX		1995					
Salda-2	BAPEX		1995					
Salda-3	BAPEX	Directional	1995	February, 2012		639-640, 698-700		Upper/Lower
Salda-4	BAPEX		1995					
Field : Sangu								
Sangu-1	BGFCL		1996					
Sangu-3z	BGFCL		1996					
Sangu-4	BGFCL		1996					
Sangu-5	BGFCL		1996					
Sangu-7	BGFCL		1996					
Sangu-8	BGFCL		1996					
Sangu-9	BGFCL		1996					
Sangu-10	BGFCL		1996					
Sangu-11	BGFCL		1996					
Field : Semutang								
Semutang-5	BAPEX		1967			280-508		Lower Zone
Semutang-6	BAPEX		1967			750-1302		
Field : Shahbazpur								
Shahbazpur-1	BAPEX		1995	May, 2009		2310-3543		Lower Zone
Shahbazpur-2	BAPEX		1995			3541-4133		Lower Zone
Shahbazpur-3	BAPEX		1995			4300		Upper Zone
Shahbazpur-4	BAPEX		1995			4250		Upper Zone
Field : Srikail								
Srikail-2	BAPEX		2012			990-1016		Upper & Lower D
Srikail-3	BAPEX		2012			981-1043		Upper & Lower D
Srikail-4	BAPEX		2012			1018-1068		Upper & Lower D
Field : Sundalpur								
Sundalpur -1	BAPEX		2011					
Sundalpur -2	BAPEX		2011					
Field : Sylhet								
Sylhet-3	SGFL		1955	Aug, 1958				
Sylhet-6	SGFL		1955	Aug, 1964		800-850	SIWHP	
Sylhet-7	SGFL		1955	Apr, 2005		1750-1820	FWHP	Lower Bokabil
Surma-1	SGFL		1955	June, 2010		230	SIWHP	C & D
Field : Titas								

Conditions of Field and Well upto September 2023

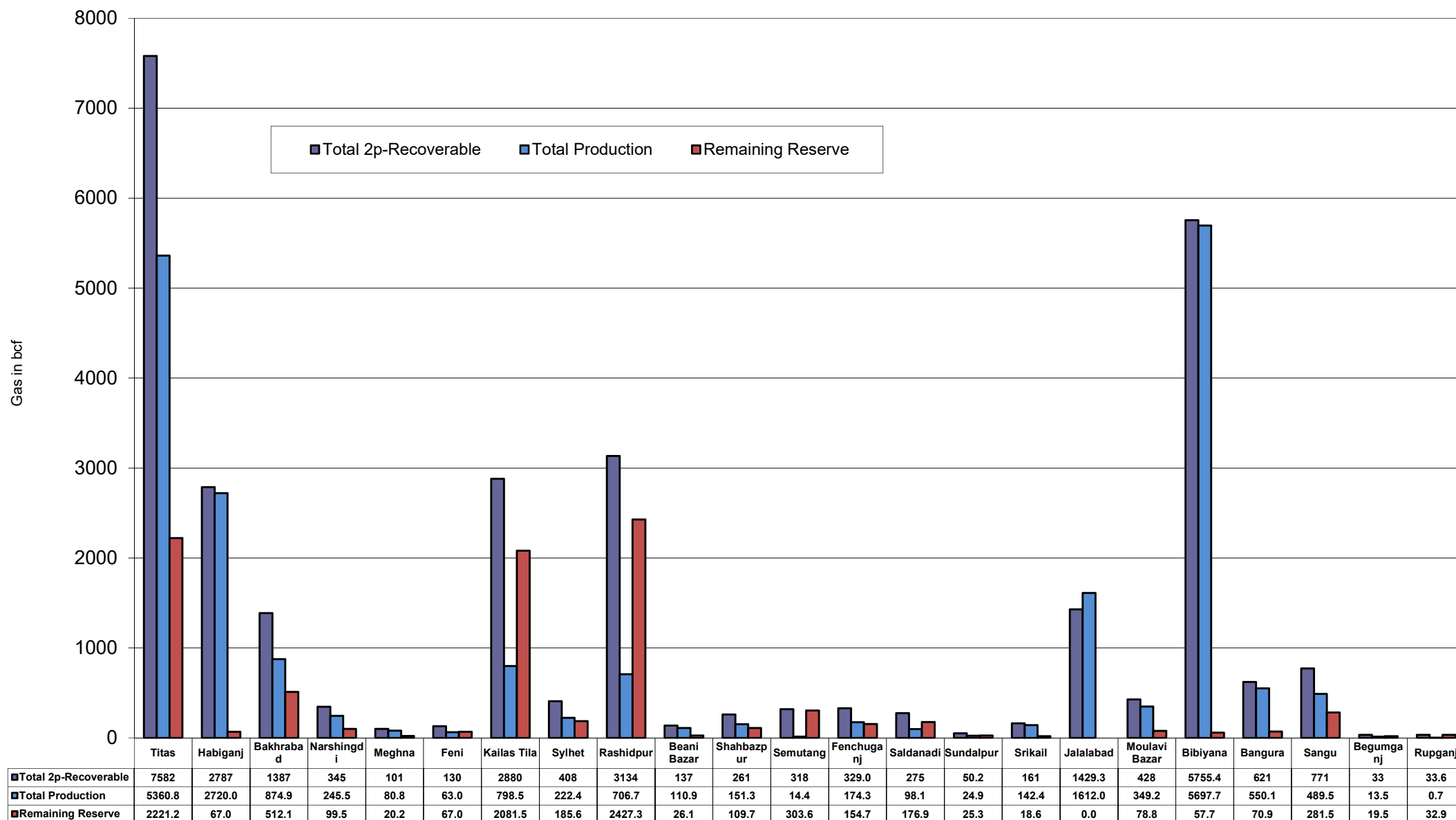


Well	company	well type	Discovery	production start	Drilled depth (ft)	Pressure	Pressure type	Completion Zone
Titas-1	BGFCL	vertical	1962	Mar,1969	12325	900-925	FWHP	A
Titas-2	BGFCL	vertical	1962	Fen,1969	10574	960-1020	FWHP	A
Titas-3	BGFCL	vertical	1962	sept,1969	9315	0	FWHP	A
Titas-4	BGFCL	vertical	1962	oct,1969	9350	1020-1070	FWHP	A
Titas-5	BGFCL	Directional	1962	jan,1981	10805	990-1035	FWHP	A
Titas-6	BGFCL	vertical	1962	Feb,1984	10072	1195-1225	FWHP	A
Titas-7	BGFCL	Directional	1962	July,1985	11006	1090-1160	FWHP	A
Titas-8	BGFCL	Directional	1962	sept,1985	11760	1000-1030	FWHP	B & C
Titas-9	BGFCL	Directional	1962	jan,1988	11893	1040-1085	FWHP	B & C
Titas-10	BGFCL	Directional	1962	may,1988	12139	1140-1180	FWHP	A
Titas-11	BGFCL	vertical	1962	Jun,1991	10462	1275-1310	FWHP	A
Titas-12	BGFCL	Directional	1962	July,2002	9873	1465-1500	FWHP	A
Titas-13	BGFCL	Directional	1962	June,2000	11487	1085-1115	FWHP	A
Titas-14	BGFCL	Directional	1962	June,2000	11004	1200-1250	FWHP	A
Titas-15	BGFCL	vertical	1962	may,2006	10446	0	FWHP	A
Titas-16	BGFCL	Directional	1962	dec,2005	11673	1205-1225	FWHP	A
Titas-17	BGFCL	vertical	1962	feb,2013	9424	1145-1175	FWHP	A
Titas-18	BGFCL	Directional	1962	august,2013	10932	1165-1190	FWHP	A
Titas-19	BGFCL	Directional	1962	may,2014	12730	1365-1415	FWHP	A
Titas-20	BGFCL	Directional	1962	oct,2013	11585	1370-1440	FWHP	A
Titas-21	BGFCL	Directional	1962	dec,2013	11631	1260-1285	FWHP	A
Titas-22	BGFCL	Directional	1962	march,2014	11926	990-1025	FWHP	A
Titas-27	BGFCL	Directional	1962	april,2014	10292	1245-1265	FWHP	A
Titas-23	BGFCL	Directional	1962	feb,2017	11988	2265-2340	FWHP	C
Titas-24	BGFCL	Directional	1962	oct,2016	12686	1120-1245	FWHP	C
Titas-25	BGFCL	vertical	1962	march,2016	11680	1300-1340	FWHP	A
Titas-26	BGFCL	Directional	1962	july,2016	12618	1840-1875	FWHP	C
Field :	Begumganj							
Begumganj-3	BAPEX		1977					
Field :	Rupganj							
Rupganj-1	BAPEX		2014			38-88		

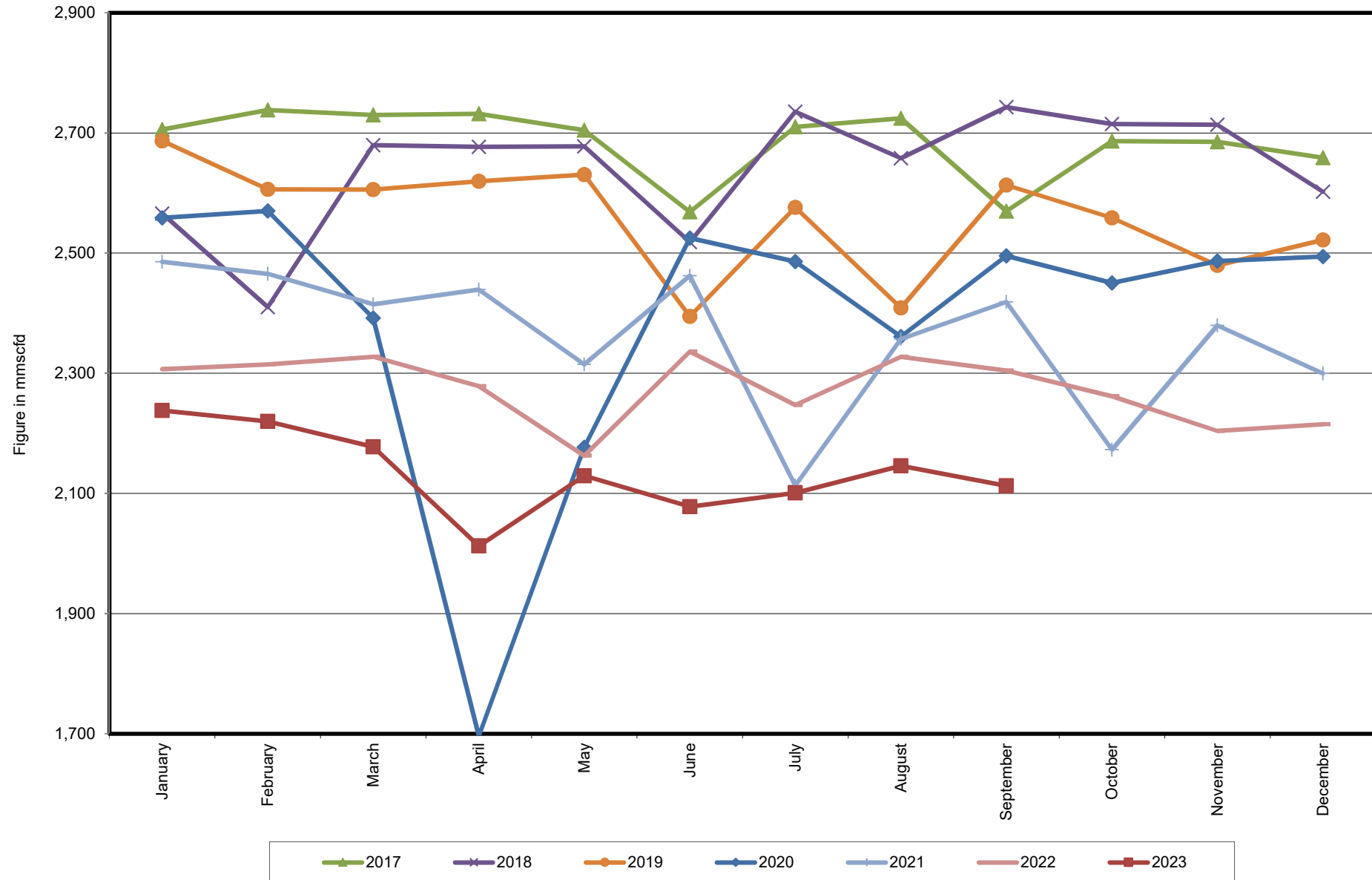
Well-wise Production of All fields in 2022-23



Reserve, Production and Remaining Reserve as of September 2023



Daily Avg. Production From January 2017 to September 2023



Field Wise Daily Avg. Production September 2023

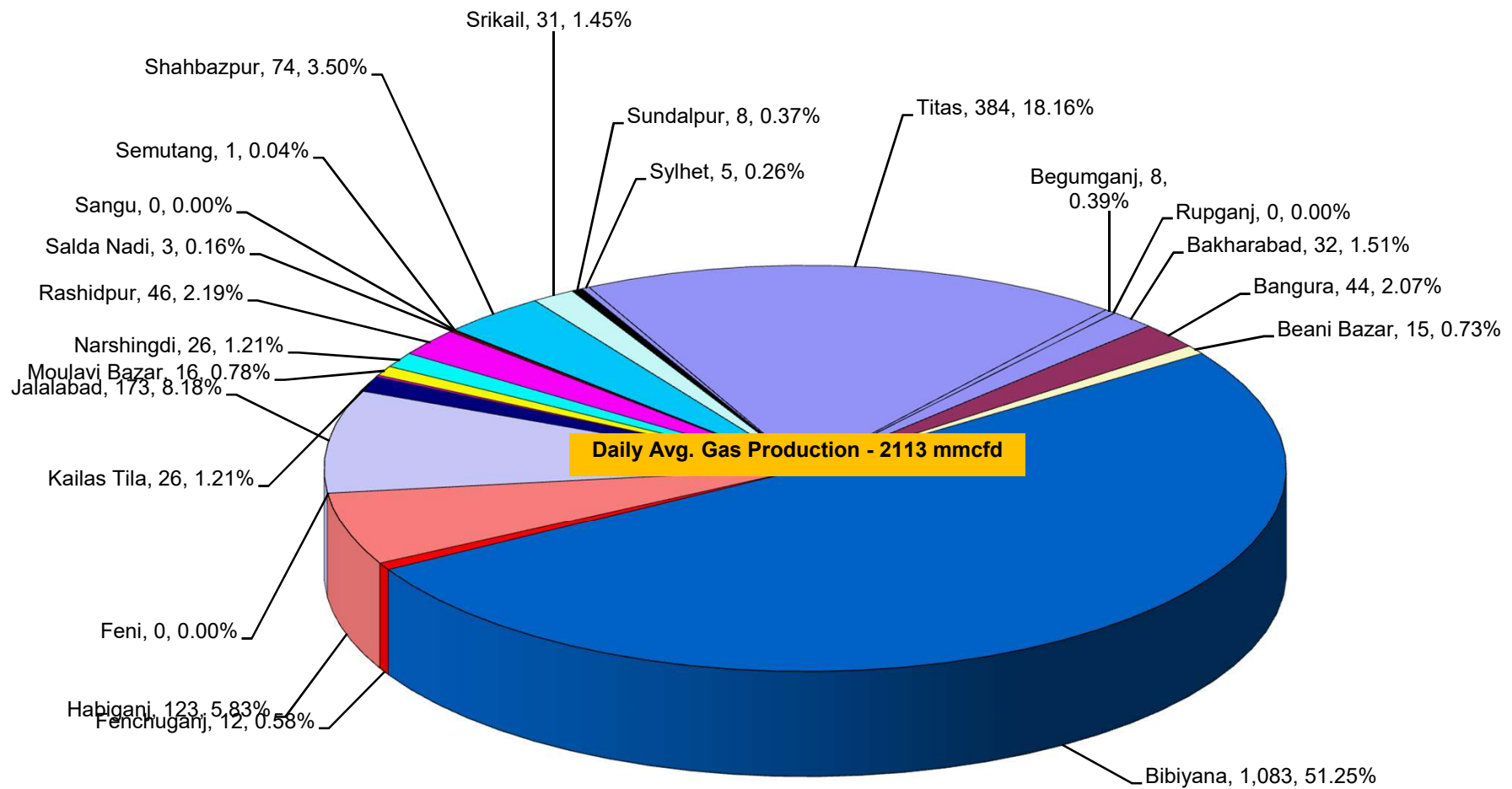
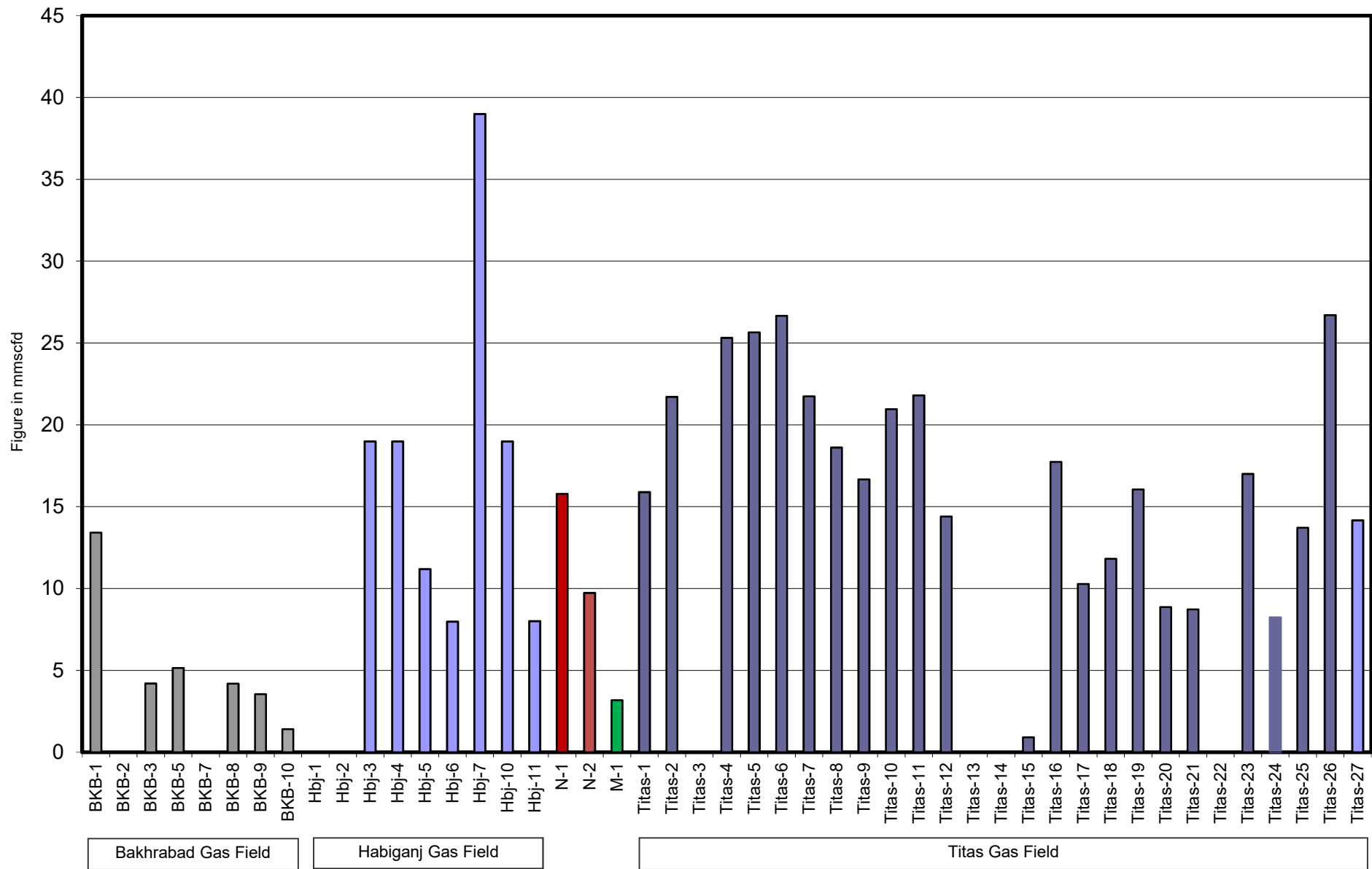
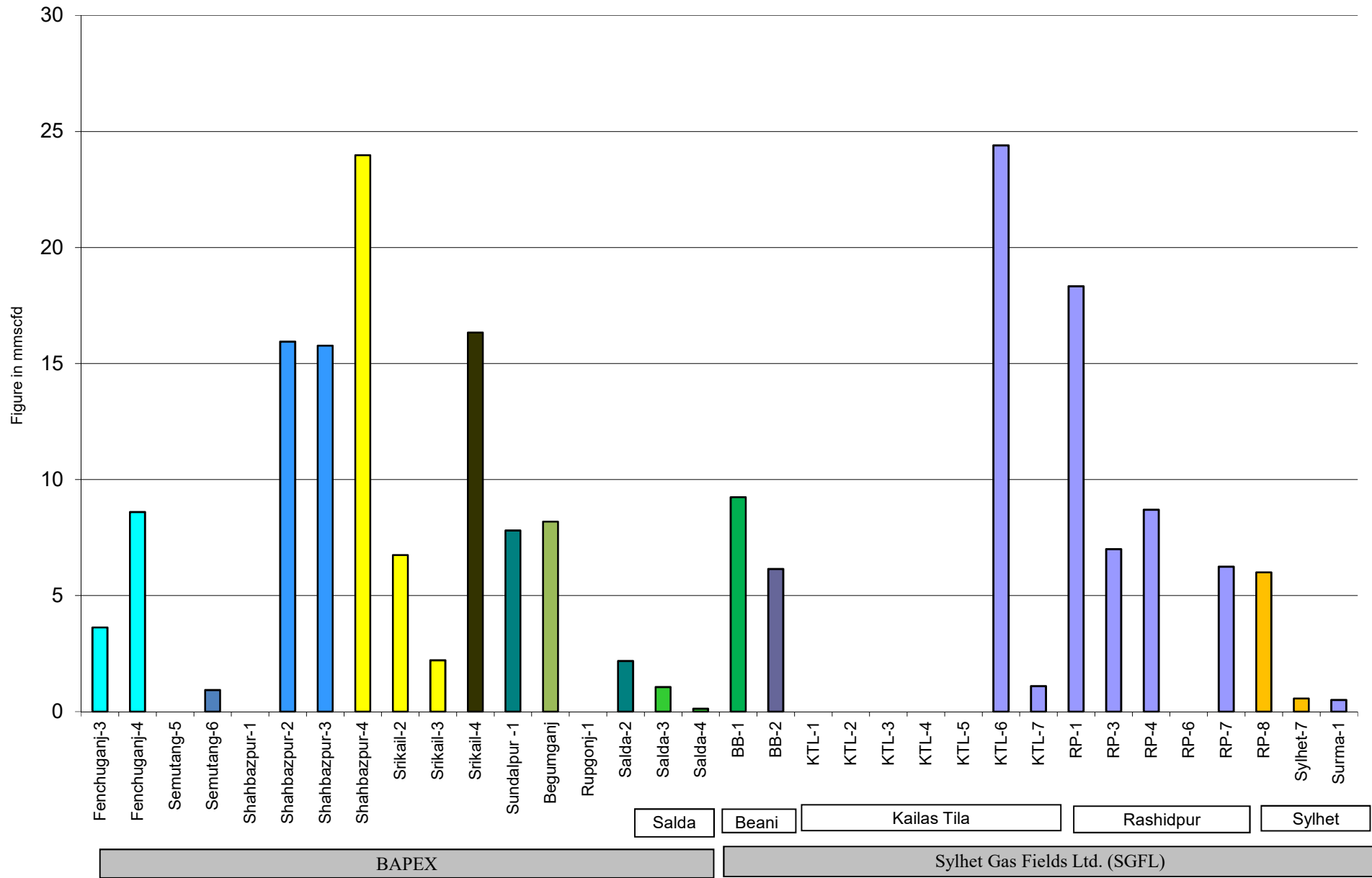


Figure in mmcf and % of total production

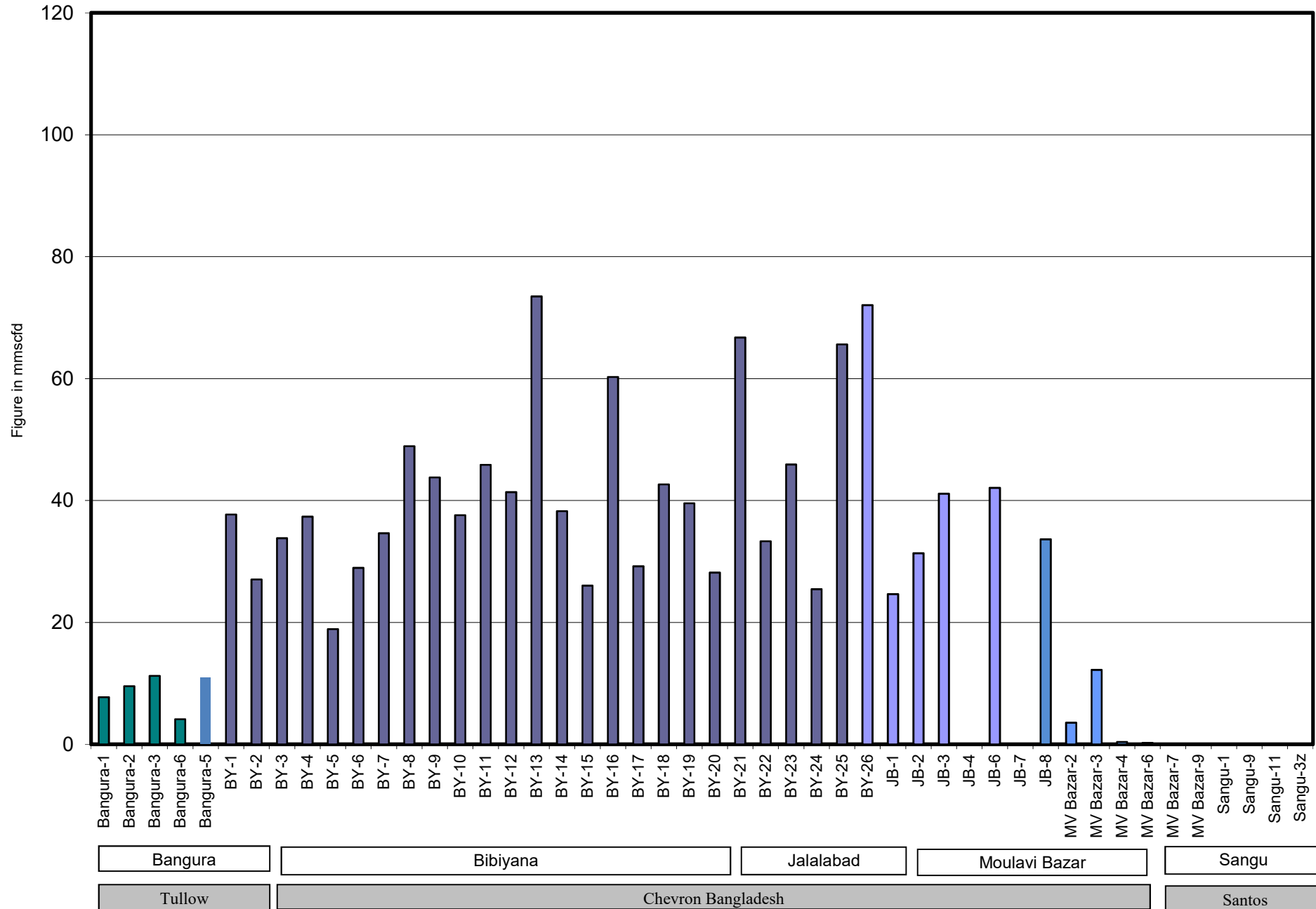
Wellwise Daily Avg. Production- BGFCL September 2023



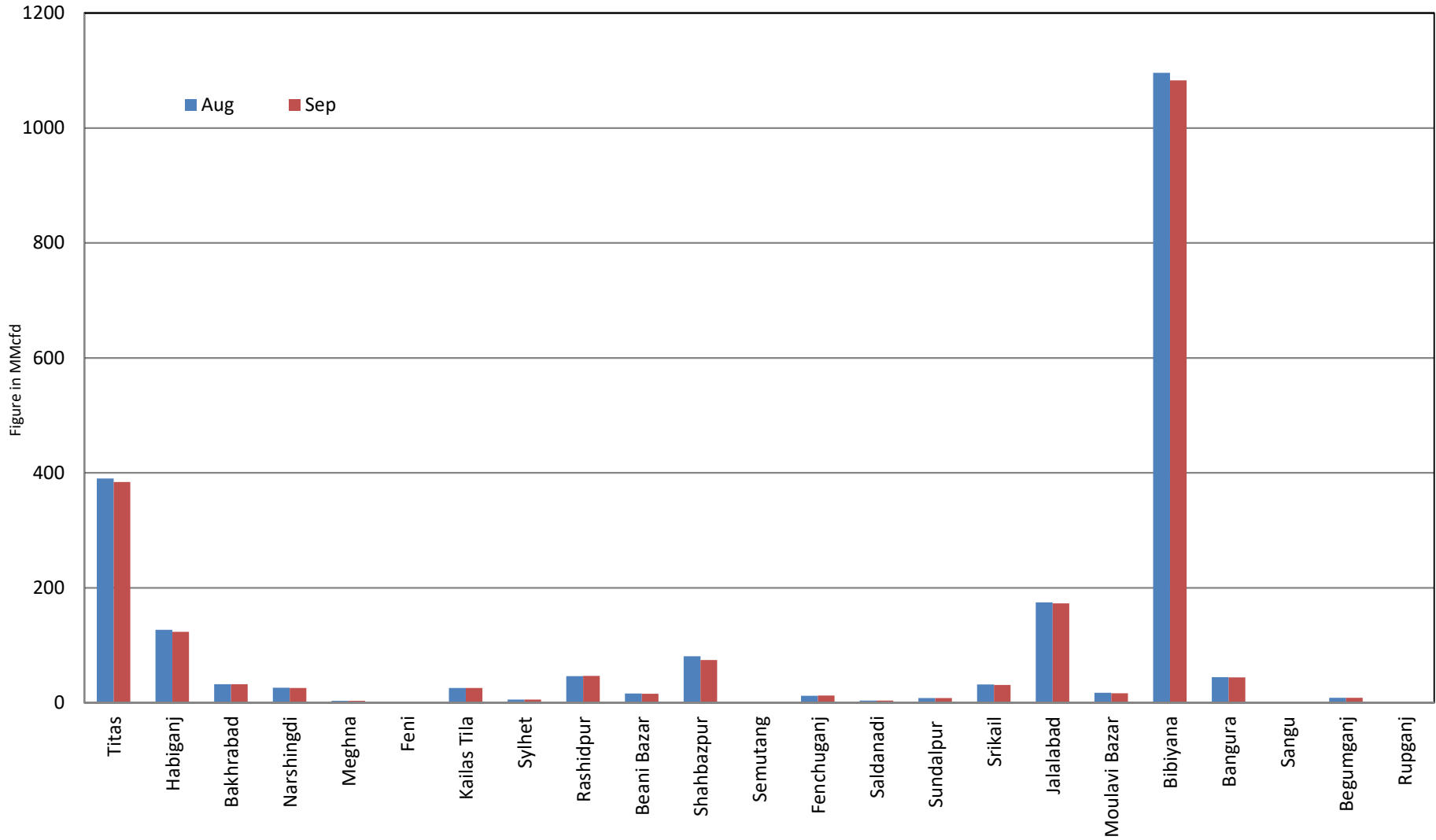
Wellwise Daily Avg. Production- Bapex and SGFL September 2023



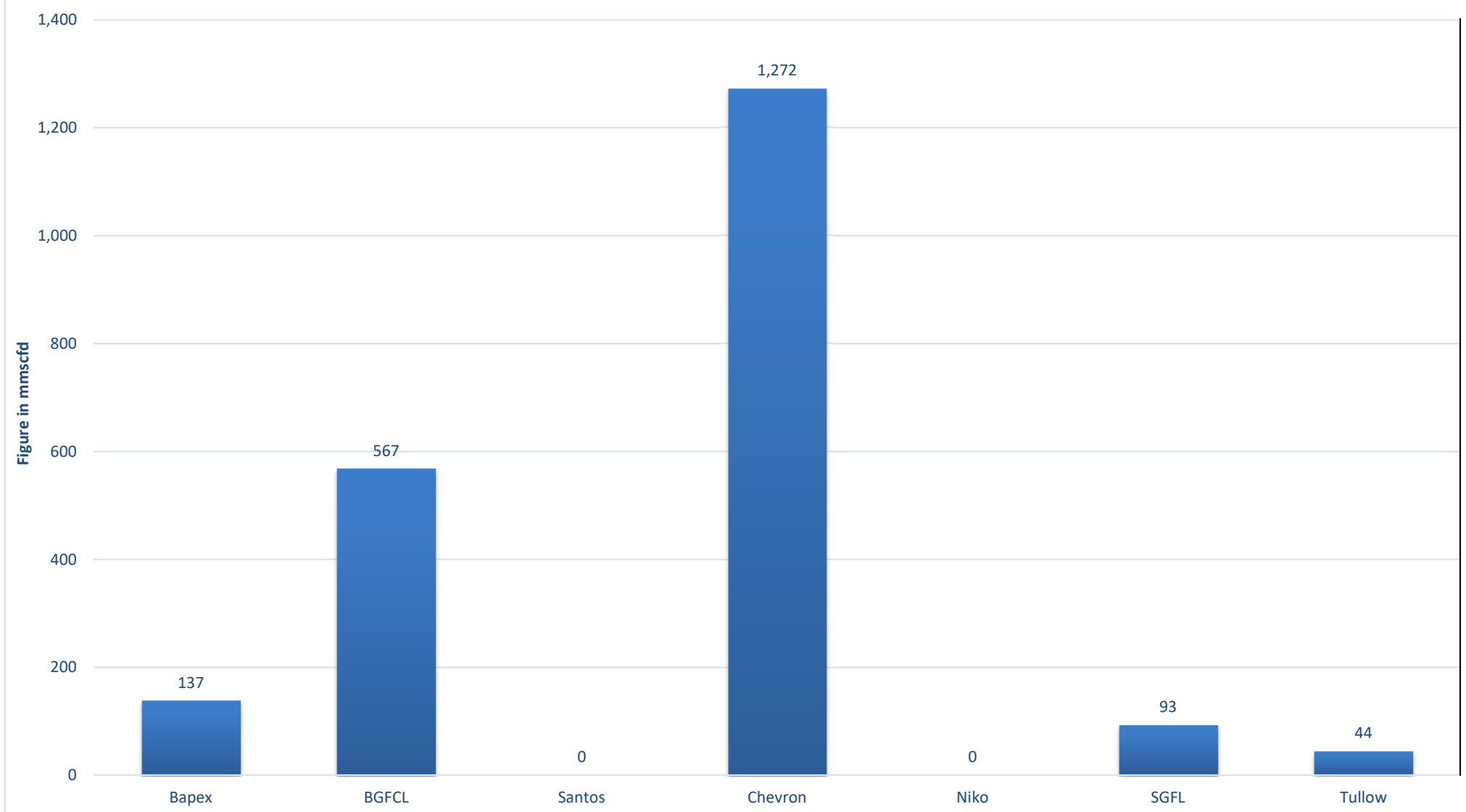
Wellwise Daily Avg. Production- IOC and JVA September 2023



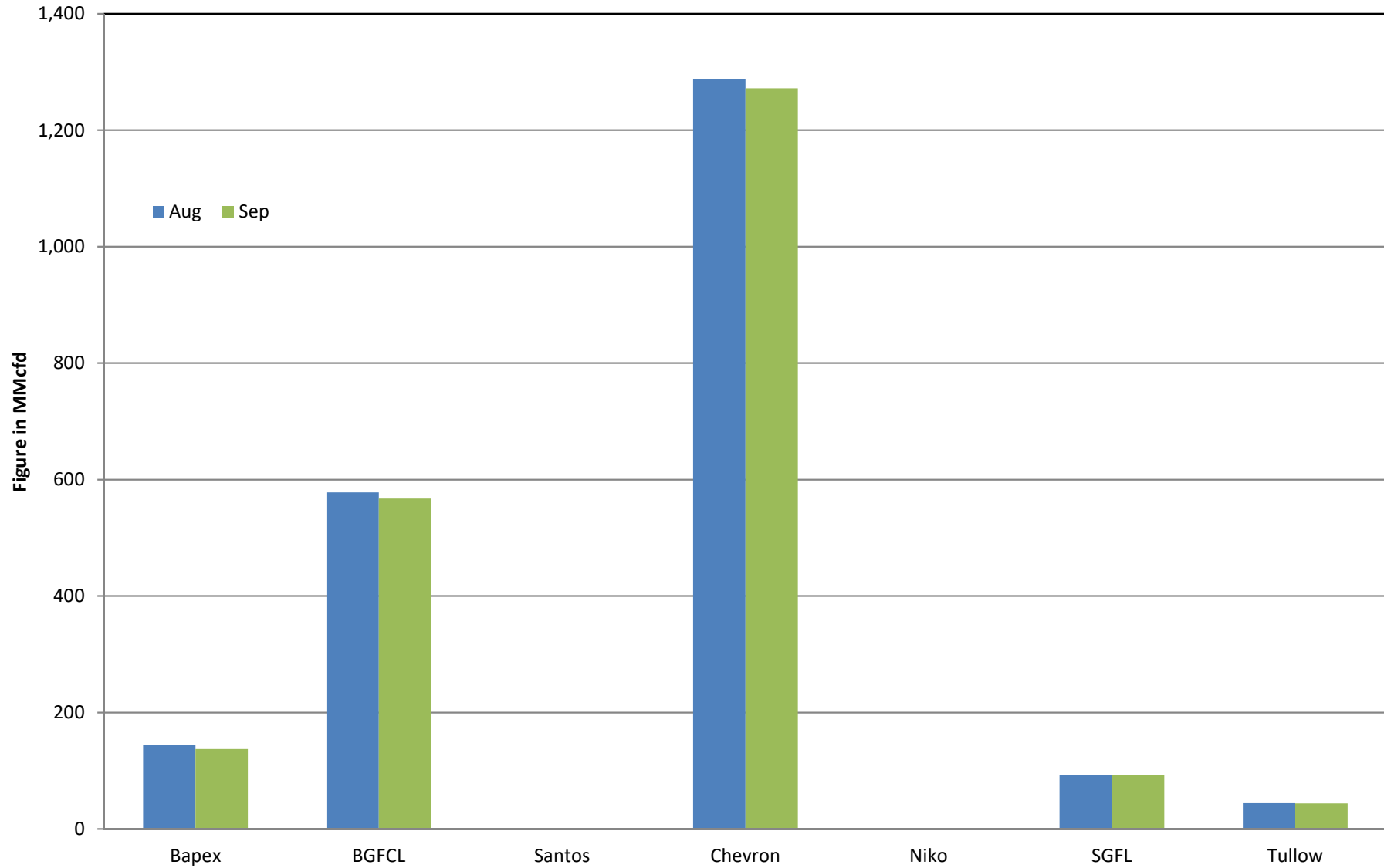
Comparison of fieldwise daily avg. Gas production between August 2023 & September 2023



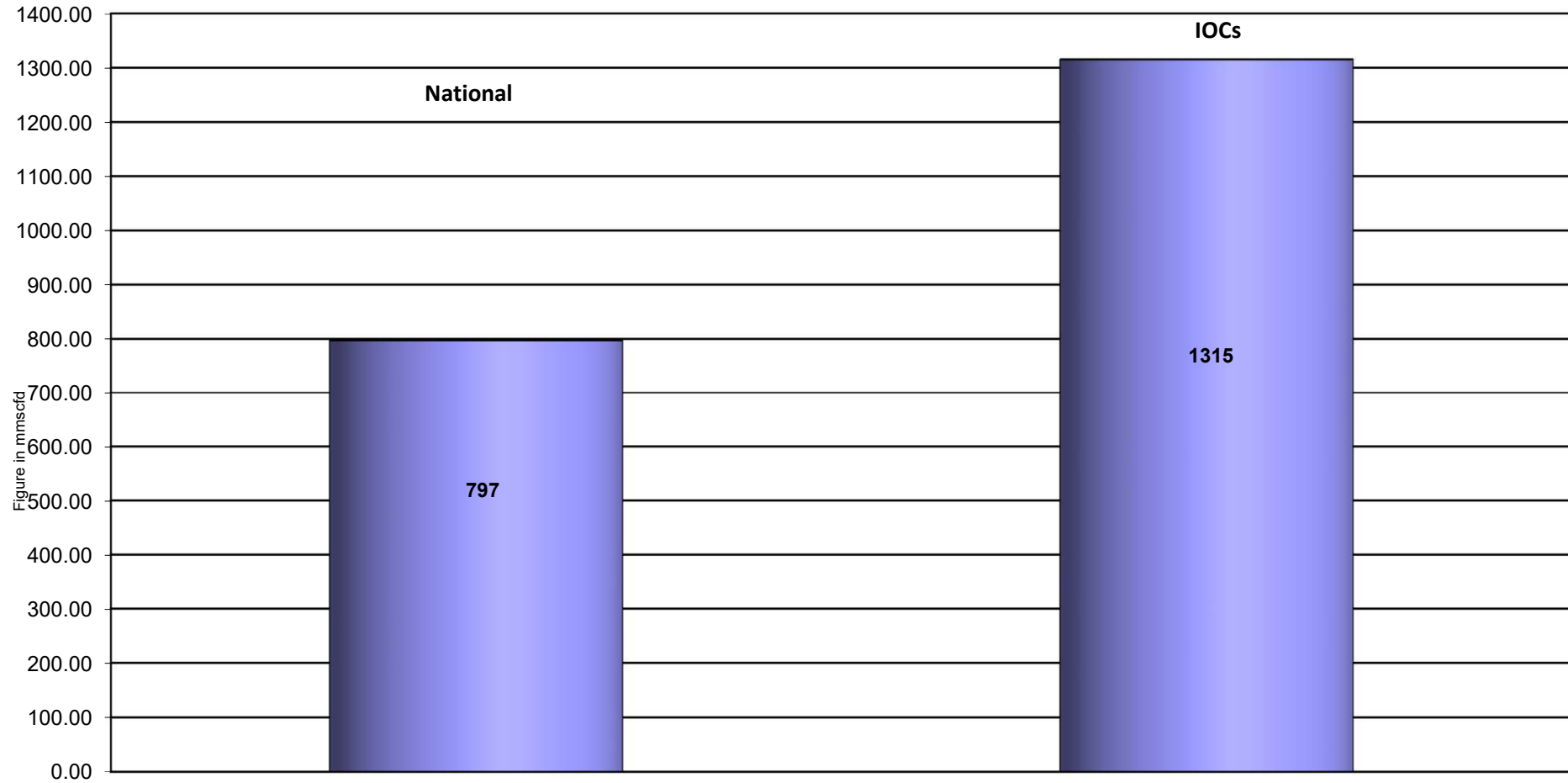
Daily Avg. Production by Operators September 2023



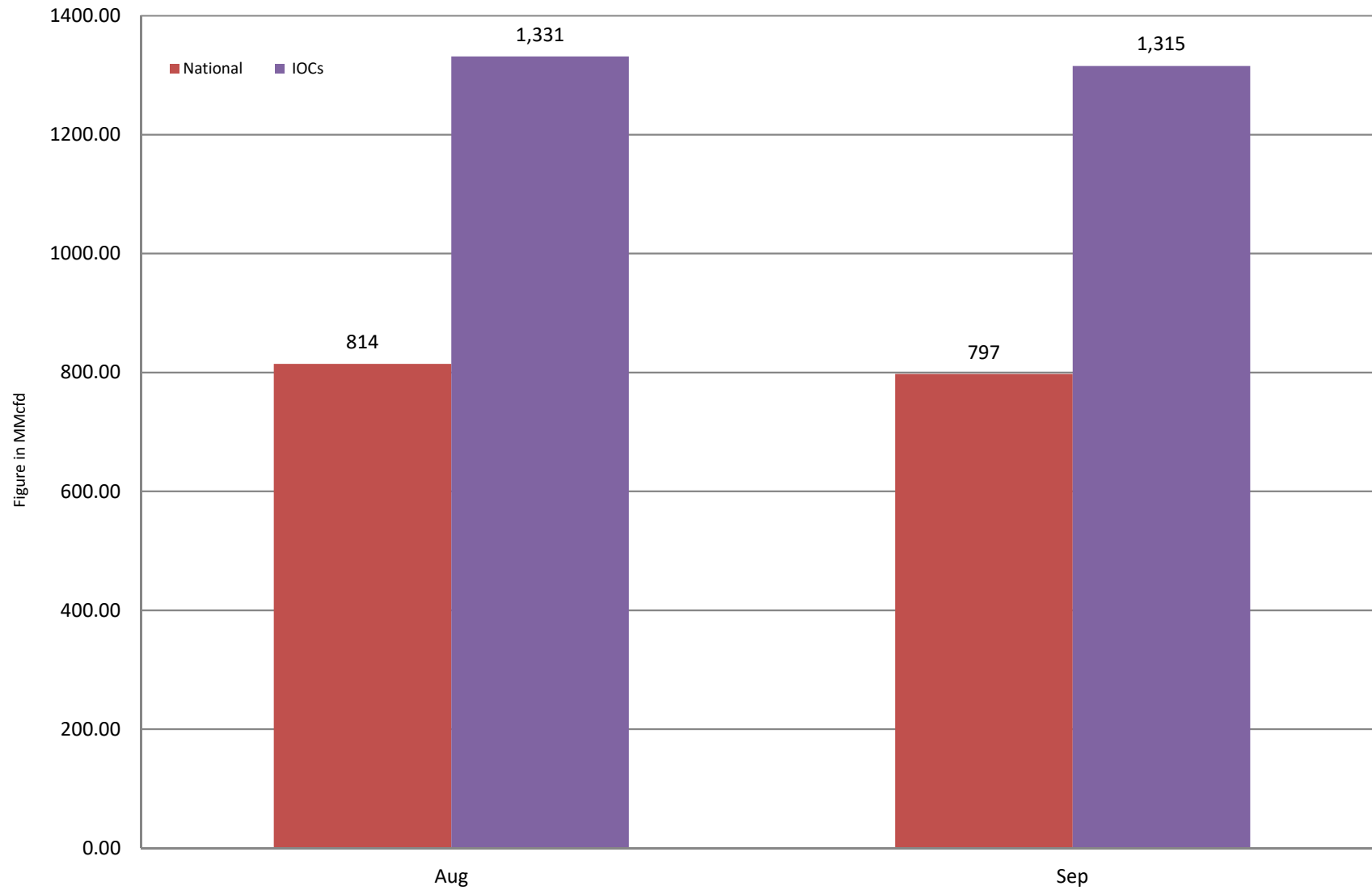
Comparison of operatorwise daily avg. Gas production between August 2023 & September 2023



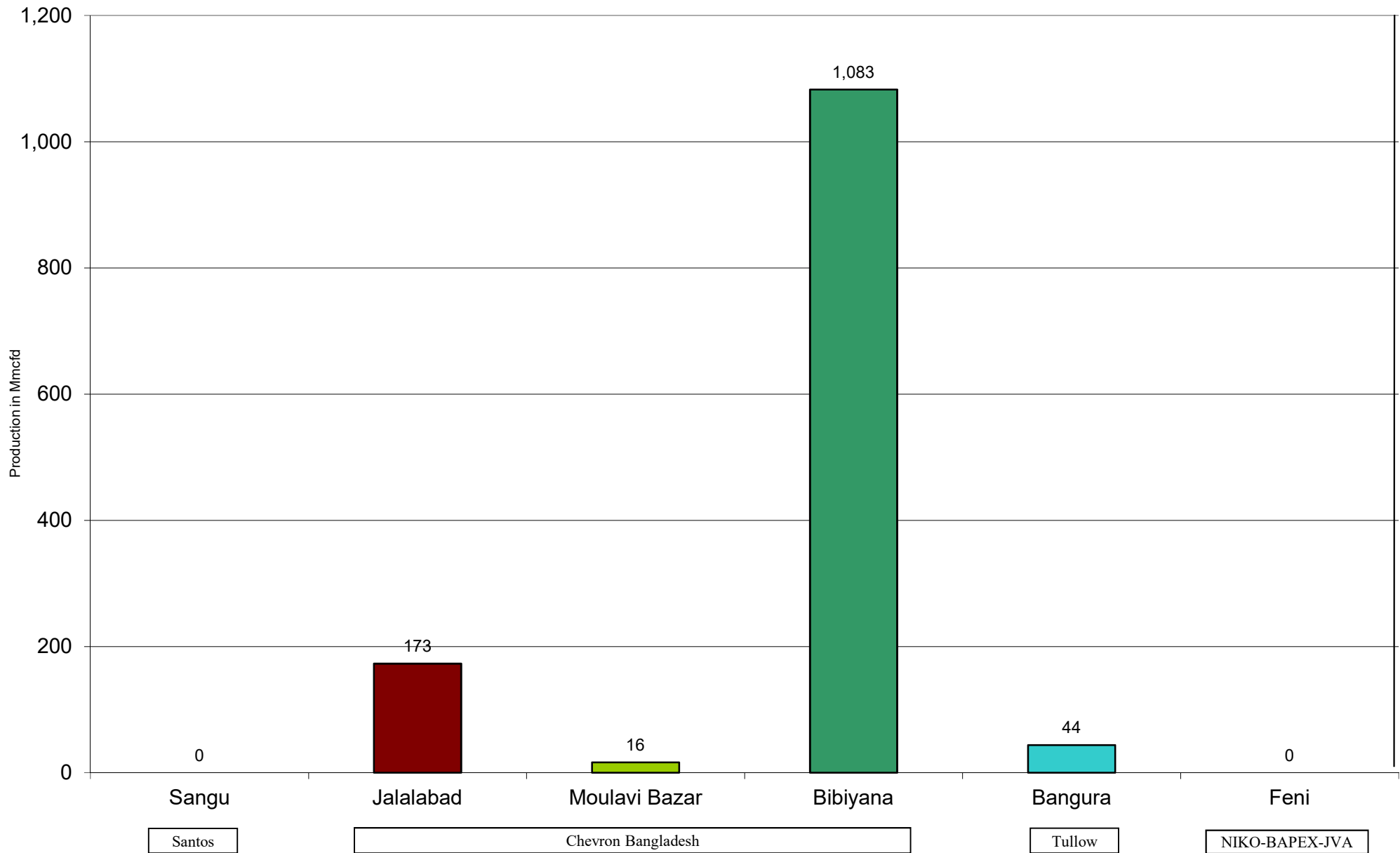
Daily Avg. Production - National Vs. IOCs September 2023



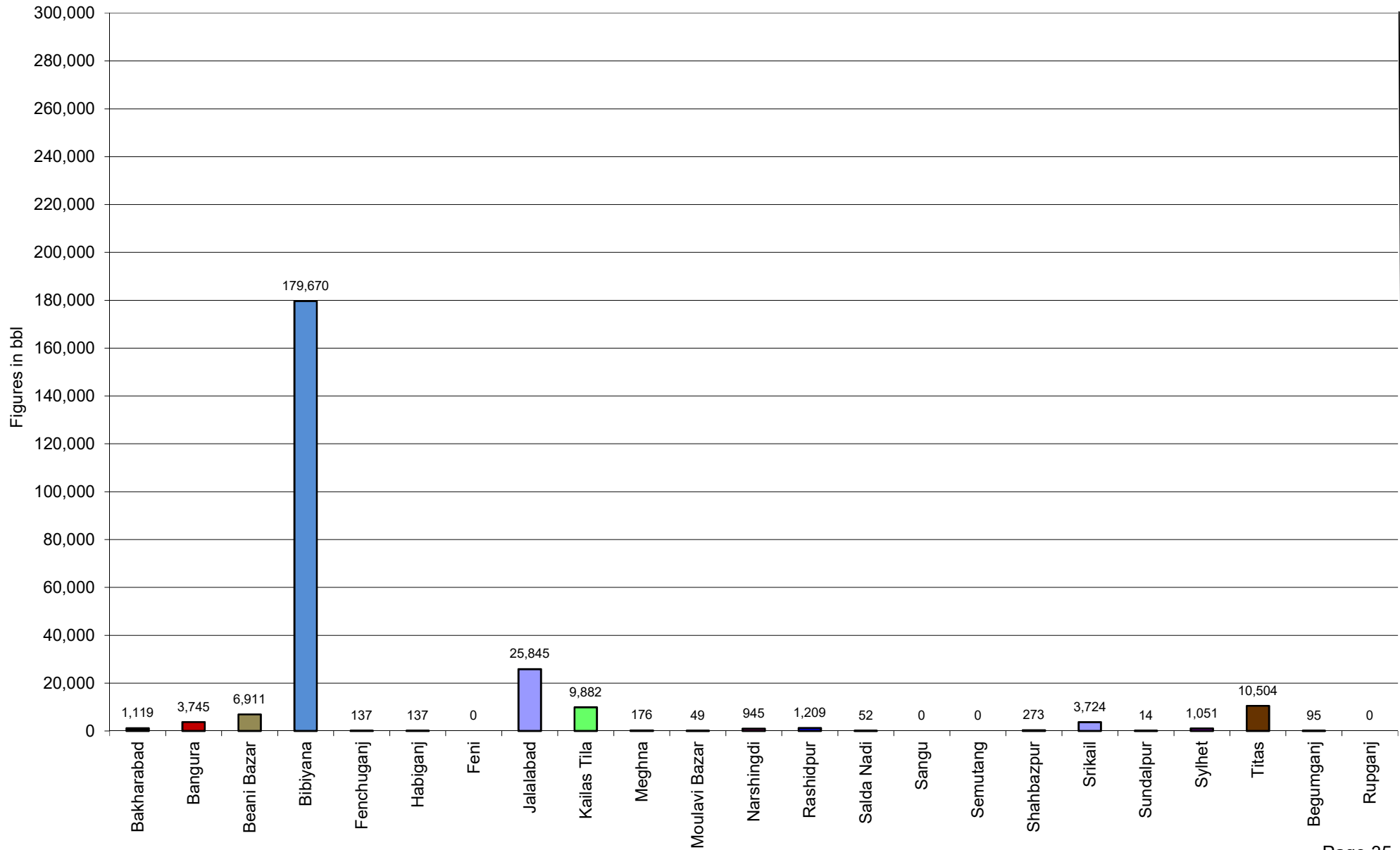
Comparison of daily avg. Gas production - National vs IOC's between August 2023 & September 2023



Daily Avg. Production - IOC and JVA September 2023



Monthly Condensate Production September 2023



Field wise Coal Reserve in Bangladesh

SI No.	Coal Basins	Proved (Mt)	Indicated (Mt)	Inferred (Mt)	Total (Mt)
1	Barapukuria	114.32	211.33	21.06+(43-64)*	346.71+(43-64)*
2	Phulbari	288	226	58	572
3	Khalashpir	-	297.57	225.92	523.49
4	Jamalganj	-	-	1053.9	1053.9
5	Dighipara	-	105	495	600
	Total	402.32	839.9	1896.88-1917.88	3139.10-3160.10

**Resources of VI Seam in second syncline areatowards SW of main basin,after Wardell Armstrong*

NOTE: Reserve Figure based on Coal Sector Development Strategy (Final), HCU,PwC

Summary of Reserve and Production of Barapukuria Coal Mine As of September 2023

Coal Initially Place (Proven + Probable)	346,710 kT	346.71 MT
Total Reserve of Seam VI	285,410 kT	285.41 MT
Recoverable from Seam VI Central part(Proven + Probable)	16,540 kT*	16.54 MT
Coal Production in September 2023	5.00 kT	0.01 MT
Cumulative Production as of September 2023	13,721 kT	13.72 MT
Remaining Reserve	2,819 kT	2.82 MT

NOTE: Reserve figure based on Mines and Minerals Development Report ,HCU PwC

*Figure from BCMCL, M/S Wardell Armstrong. According to Mines and Minerals Development Report ,HCU, PwC this figure is 64.8 Mt

Barapukuria Coal Mine-MPM and P Contract (BCMCL)
Measurement Record: Surface Belt Weigher
Measurement Period: September 2023

Day wise data	Consortium Daily Output (ton)	Consortium Cumulative Total	BCMCL Daily Output	BCMCL Cumulative Total	Remarks
1-Sep-2023	561.32	561.32	561.32	561.32	
2-Sep-2023	4.95	566.27	4.95	566.27	
3-Sep-2023	645.51	1,211.78	645.51	1,211.78	
4-Sep-2023	11.30	1,223.08	11.30	1,223.08	
5-Sep-2023	477.17	1,700.25	477.17	1,700.25	
6-Sep-2023	26.89	1,727.14	26.89	1,727.14	
7-Sep-2023	210.40	1,937.53	210.40	1,937.53	
8-Sep-2023	13.61	1,951.14	13.61	1,951.14	
9-Sep-2023	0.00	1,951.14	0.00	1,951.14	
10-Sep-2023	22.69	1,973.83	22.69	1,973.83	
11-Sep-2023	231.39	2,205.22	231.39	2,205.22	
12-Sep-2023	105.18	2,310.40	105.18	2,310.40	
13-Sep-2023	28.83	2,339.23	28.83	2,339.23	
14-Sep-2023	54.29	2,393.52	54.29	2,393.52	
15-Sep-2023	97.40	2,490.92	97.40	2,490.92	
16-Sep-2023	60.65	2,551.57	60.65	2,551.57	
17-Sep-2023	139.47	2,691.04	139.47	2,691.04	
18-Sep-2023	72.35	2,763.39	72.35	2,763.39	
19-Sep-2023	92.98	2,856.37	92.98	2,856.37	
20-Sep-2023	48.51	2,904.89	48.51	2,904.89	
21-Sep-2023	74.75	2,979.64	74.75	2,979.64	
22-Sep-2023	43.16	3,022.80	43.16	3,022.80	
23-Sep-2023	678.75	3,701.55	678.75	3,701.55	
24-Sep-2023	56.61	3,758.16	56.61	3,758.16	
25-Sep-2023	18.38	3,776.54	18.38	3,776.54	
26-Sep-2023	104.00	3,880.54	104.00	3,880.54	
27-Sep-2023	580.33	4,460.87	580.33	4,460.87	
28-Sep-2023	118.61	4,579.48	118.61	4,579.48	
29-Sep-2023	117.31	4,696.80	117.31	4,696.80	
30-Sep-2023	681.09	5,377.88	681.09	5,377.88	

Adjustable coal for scale calibration	0.00
Total Output	5,377.88
Deduction for scrap	0
Less Difference in water content	375.931
Less out of seam Dilution	0.00
Net Output	5,001.95

Barapukuria Coal Mine Daywise Data Graph for September 2023

